



Around Radlett

SPRING 2014

102

The Newsletter of Aldenham Parish Council • www.aldenham-pc.gov.uk



'Bluebells at Berrygrove Woods' by Joan Scivyer



Councillor
Neil Payne

Chairman's Message

Firstly, on behalf of all the residents of the Parish, I would like to congratulate John Apthorp, OBE on the award of the CBE in the New Year's Honours for charitable services, particularly in Hertfordshire. This award was greatly deserved. Many groups and organisations in the Parish have benefitted from his kind and generous philanthropy.

In September 2013, the Parish Council submitted to Herts BC an application for the designation of a neighbourhood area for the purposes of preparing a Neighbourhood Plan. In November the Borough Council formally published the Parish Council's submission and sought representations during a six week period which ended on 6 January 2014. The Borough

Council will then consider any representations and, hopefully, will approve the designated area for the proposed Neighbourhood Plan.

The Christmas Lights in Radlett were switched on by Kye Sones, X-Factor finalist, during the course of the village's Winter Fair on 1 December. The event, comprising a funfair, ice-skating, Santa's grotto and a festive market, was well attended by residents. It was organised by Cllr Estelle Samuelson and Officer Lucy Jackman, and my thanks go to them both for their hard work. As a result of positive feedback, the event now appears to be a permanent event of the Council's calendar.

The Parish Council has been giving careful consideration to the future of the Pavilion building in the Phillimore Recreation Ground. It is planned that a presentation will be made at the Annual Parish Meeting on 10 March, so that parishioners are informed of the

Council's thinking and have the opportunity to raise any comments.

A further Shopkeepers' Forum took place in November, and a useful discussion took place on a number of subjects. It would be good to see more shopkeepers at the next meeting.

The uncertainty surrounding the Strategic Rail Freight Depot continues, as the County Council has agreed to await the outcome of the planning decision by the Secretary of State, before deciding whether to sell the land concerned to the prospective developers, Helioslough. In the meantime, an alternative proposal has been mooted for the area concerned, in terms of building a football stadium for St Albans FC and 6,000 homes.

Councillor Neil Payne
Chairman
Aldenham Parish Council



What's On Locally

Remember to check the Aldenham Parish Council website for all up to date events and meetings www.aldenham-pc.gov.uk

Monday 10 March 2014 at 7.30pm

The **Annual Parish Meeting** at the Radlett Centre. Your opportunity to find out and raise questions about what your Council does for you. There will be a special presentation about the Pavilion project (please see page 9).

Haydn – Symphony No. 88;
Beethoven – Mass in C.
With the Amadeus Orchestra
Musical Director: Alex Flood

Thursday 10 April at 8pm

Radlett Music Club presents Lucy Hall (*soprano*) and Gavin Roberts (*piano*) at Karl König Hall, Delrow Community, Summerhouse Lane, Patchetts Green, Aldenham, WD25 8DL

Tickets for non-members for this concert are only available at the Karl König Hall door, with no advance-booking facility. Non-member admission charge: £8

Thursday 20 March at 8pm

CCJ Council of Christians & Jews: Radlett & District.
Radlett & Bushey Reform Synagogue Choir Event – with Choirs from Radlett & Bushey Reform Synagogue and St Martin's Church, Shenley.

Radlett Choral Society Saturday 5 April at 7.30pm

Radlett Choral Society Spring Concert at St Saviour's Church, Sandpit Lane, St Albans, Herts AL1 4DF
Programme:
Mozart – Regina Coeli K.108;

Thursday 1 May at 8pm

CCJ At Christ Church Vision Hall, **Radlett: Council of Christians & Jews: Radlett & District Branch AGM** - Guest speaker Barry Hyman, President of Radlett & Bushey Reform Synagogue. Subject - Ethics in Business and Religion.



May Day bank holiday, Monday 5 May 2014 – 10am

Radlett Rotary Club Fun Run 2014 at

Tabard Rugby Ground. Contact Simon Pyzer on 01923 854978, simon.pyzer@btinternet.com



Tuesday 13 – Saturday 17 May at 2.30pm and 7.30pm.

Radlett Light Opera Society will be bringing vividly to life Lionel Barts musical production of **'Oliver'** at the Radlett Centre.

This Dickens classic is filled with timeless characters, and its ever popular story of the boy who asked for more.

(Box Office: 01923 859291 www.radlettcentre.co.uk)



Sunday 8 June – 12 noon to 4.30pm – see page 6.



Radlett Winter Fair 2013

Over 500 residents attended the Radlett Winter Fair on Sunday 1st December.

All ages were able to get in the festive spirit by having a wild ride on the Rodeo Reindeer, or glide gracefully across the ice rink under a flurry of snow. There was a traditional merry go round and bouncy castle to keep the children entertained. Santa's grotto saw children queuing throughout the afternoon to be greeted by Santa, who sang songs and told them jokes before the children received a gift from his little elf helpers.

Aldenham Avenue was filled with a festive market and foods stalls, and inside the Radlett Centre were craft stalls and Georgie's Café selling mince pies and mulled wine.

The arrival of Kye Sones sent excitement through the Fair, he happily walked round, signed autographs and posed for pictures before turning on the Christmas Lights. The whole afternoon was rounded off by the fabulous singing group Fortitude, whose festive songs throughout the afternoon gave the day such a Christmassy feeling.

Aldenham Parish Council would like to thank everyone that came along and took part in such a wonderful day.



Wall Hall Estate open for visitors

At an event on Friday 13 December local volunteers, councillors and local interest groups joined the Countryside Management Service (CMS) to celebrate the launch of the new leaflet and interpretation boards for the Wall Hall Estate in Aldenham.

The leaflet provides a guide to and map for three circular routes within the estate which have been the subject of an improvement project. The CMS volunteers installed interpretation boards along the routes to provide information and draw attention to points of interest along the way.



The estate is part of Herfordshire County Council's Rural Estate. They have dedicated an additional 1.5 miles of new paths, and upgraded a further 1.5 miles from footpaths to bridleways, making them accessible on bicycle and horseback as well as on foot. Many of these paths have been resurfaced, making them suitable in all weathers. The funding has come through the Section 106 obligation related to the building of new housing on previously developed land at Wall Hall.

The project is a partnership between Herfordshire County Council and

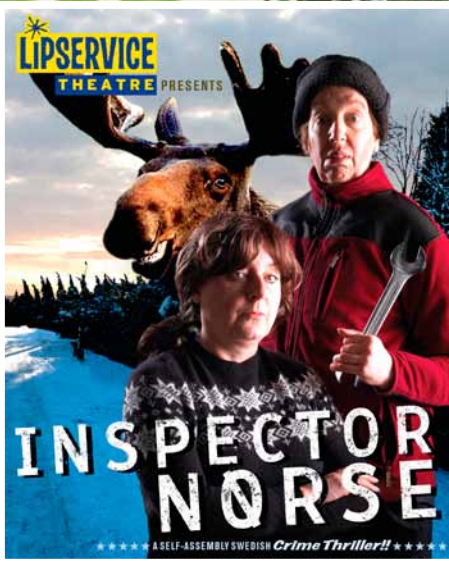
Hertsmere Borough Council. It has involved local interest groups such as the Open Spaces Society, the local conservation and footpath societies, bridleways trusts and cycling groups.

You can explore the outdoors on foot, bicycle or horseback using the three waymarked routes of 2km, 6.8km or 10.3km.

Join the CMS on a guided walk around the Estate on Saturday 26 April 2014 at 10.30 am. Meet at the Aldenham Village Green for a 5km (3mile) walk, taking in the beautiful Berrygrove Woods (pictured on the front cover – painted by Joan Scivyer) which should be carpeted in bluebells at this time of year.

For more information visit: <http://hertsdirect.org/walksandmore>

To download the Wall Hall Estate leaflet go to: <http://www.hertslink.org/cms/getactive/placestovisit/wallhallaldenham/>



Inspector Norse - 30 May at 8pm

MARCH

Art Exhibition

Ground Floor Gallery – Bricket Wood Art Club

Apthorp Gallery – David Gerrard

- Sat 1** What the Ladybird Heard 10.30am & 1.30pm
- Sun 2** The Glenn Miller Orchestra 7.30pm
- Thu 6** The World's Worst Serial Killers 8pm
- Sat 8** Think Floyd 7.30pm
- Sun 9** Ruby Wax 7.30pm
- Mon 10** APC Annual Parish Meeting 8pm
- Thu 13** Art Society Lecture 8pm
- Fri 14** Emily – the Making of a Militant Suffragette 8pm
- Wed 19** Chamber Philharmonic Orchestra 8pm
- Thu 20** Ruthie Henshall 8pm
- Fri 21** Flash 8pm
- Sat 22** Bananas in Pyjamas 1pm & 3.30pm
- Sun 23** Bananas in Pyjamas 11am



the radlett centre

BOX OFFICE: 01923 859291
www.radlettcentre.co.uk

- Wed 26** Colin Fry 8pm
- Fri 28** Shappi Khorsandi 8pm
- Sat 29** The Kast Off Kinks 7.30pm
- Sun 30** The Rat Pack Vegas Spectacular Show 7.30pm

APRIL

Art Exhibition

Ground Floor Gallery – Greco Publications

Apthorp Gallery – Raina Goran

- Sun 6** The Jewish Legacy 4pm & 7.30pm
- Mon 7-Fri 11** Musical Theatre Workshop
- Sat 12** Jacqui Dankworth 7.30pm
- Wed 16** **Jungle Book 11am & 2pm**
- Wed 16** Andy Kirkpatrick: Inappropriate Climbing 8pm
- Thu 17** Art Society Lecture 8pm
- Wed 23** Omid Djallili 8pm
- Fri 25** **Blake 8pm**
- Sat 26** Buddy Holly and the Cricketers 7.30pm
- Wed 30-Sat 3 May** Neighbourhood Watch 8pm



Blake - 25 April at 8pm

MAY

Art Exhibition

Ground Floor Gallery – Art Expo

Apthorp Gallery – Art Expo

- Sun 4** Motor City Memories 7.30pm
- Tue 6** Omid Djallili 8pm (extra date)
- Sun 18** The Carpenter's Story 7.30pm
- Wed 21** Swinging on a Star – The Bing Crosby Years 8pm
- Thur 29** Art Society Lecture 8pm
- Fri 30** **Inspector Norse 8pm**
- Sat 31** We Say Yeah – Cliff Through the Years 7.30pm



Jungle Book - 16 April at 11am and 2pm

www.radlettcentre.co.uk www.radlettcentre.co.uk www.radlettcentre.co.uk



Five day holiday in the Cotswolds:

Sunday 18 May to Thursday 22 May –

The itinerary will include visits to the lovely villages of Broadway and Stow-in-the-Wold, to the National Trust properties and gardens of Snowhill Manor, Hanbury Hall and Chedworth Roman Villa and the gardens of Painswick, Sudeley Castle, Stanway House and Mill Dean plus a visit to the famous Slimbridge Wetland Centre.

Those interested please contact: Peggy

Sjoberg on 01923 854337 or esjoberg@zen.co.uk.

DAY TRIPS:

Thursday 1 May – Abbey House and Garden Malmesbury, Wiltshire.

This spectacular garden will have a special atmosphere this year with new plantings of 24,000 tulips. Home of the Naked Gardeners you can visit in the nude if you wish! With a walkabout in the historic market town.

Thursday 3 July – Borde Hill Garden and Elizabethan Mansion, Haywards Heath, Sussex.

Bookings commence Sunday 25 May. Described as one of the country's truly great gardens, Borde Hill has a 200 acre park with woodlands and 17 acre formal

garden planted in linked distinctive 'rooms'. With spectacular views across the Sussex Weald.

Thursday 14 August – The Wimpole Estate Arrington, Cambridgeshire.

This unique National Trust working estate is centred on a beautiful Georgian hall surrounded by formal gardens and a spectacular park. There is an 18th century walled garden and traditional working farmyard with rare breeds of poultry, sheep, goats, cattle, shire horses, and dozens of delightful squealing piglets. With explanatory talk by the manager.

Further details available from Gesine Latimer on 01923 856970.



A Spad VII at London Colney Airfield in 1917. (courtesy of Sqn Ldr Alan Curtis via Richard Riding)

London Colney Aerodrome

The photograph on the front cover of the previous Around Radlett reminded me of a long-forgotten nearby airfield about which you may be interested to hear.

When World War 1 started, flying was still something of a novelty, but the advantages of both rapid transport and aerial photography were quickly appreciated by the Military chiefs.

Initially, the Royal Flying Corps, as the RAF was then known, was an arm of the Army, supporting artillery operations with both prior reconnaissance and subsequent observation of the effectiveness, or otherwise, of an artillery attack. This new form of military equipment required new premises, particularly large, flat pieces of ground, preferably grassed, with ready access to a road system, and dozens of such sites were identified up and down the country.

One such site was a field near Shenleybury, between Shenley and London Colney, off Harper Lane. Whilst closer to Shenley, it was named London Colney to prevent any confusion with the already established airfield at Kenley near Caterham in Surrey.

At first it was used primarily as an emergency night landing ground. Then, in June 1916, it became fully operational when a new squadron, No. 56, was posted there. The area was quickly equipped with sheds, hangars, workshops and personnel huts. The purpose was revolutionary. Equipped with the latest SE5 fighter aircraft, the high proportion of experienced pilots were moulded into a dedicated team,

with efficiency and accuracy being the watch-word. Gunnery was practised at nearby Aldenham Reservoir, flying techniques explored and the rudiments of combat tactics taught by Flight Commanders.

No. 56 was the first full squadron to use the aerodrome and it set the standard for Squadrons that followed. The Germans were highly wary of Squadrons trained at London Colney, and with good reason. The roll-call of famous fighters who passed through London Colney is a list of the legendary figures of World War One.

Squadron 56 remained at London Colney until April 1917, when it left for active service in France. One of its pilots, Captain Albert Ball, was already a legend within the Flying Corps, with over thirty victories to his name. He joined the Corps at the age of 18 and by April 1917 had been awarded the Military Cross and the Distinguished Service Order and Two Bars.

One month after leaving London Colney for duty in France, he was killed in action. He was posthumously awarded the Victoria Cross, the citation indicating that he had always displayed most exceptional courage, determination and skill, with 43 enemy aircraft destroyed.

London Colney continued to serve as a 'finishing school' for experienced pilots. New Squadrons would be posted to London Colney where they trained together, obtaining a higher degree of efficiency, before being deployed for active service in France.

Other legendary officers who passed through London Colney were Capt.

J.T.B. McCudden, who survived the War, being awarded the VC, DSO and Bar, MC and Bar, Military Medal and the French Croix de Guerre, and Major Edward 'Mick' Mannock, VC, DSO and two Bars, MC and Bar. He was awarded the Victoria Cross posthumously, was the highest scoring 'Ace' of all time and is regarded as one of the greatest fighter pilots of the war.

The land was part of the Porter's estate and had been requisitioned by the War Department. It was returned after the war to the owner of Porter's, Cecil Raphael, a partner in an old, well-respected London Merchant bank.

After the War the sheds and hangars were dismantled and the field reverted to agricultural use – today growing oilseed rape – before being returned to Mr Raphael. The huts forming the Officers' Quarters were removed to St Anne's Road in London Colney for use as private dwellings and are still there, numbered 20 to 28. The only other remaining reminders were some 'green painted huts' on the edge of a copse.

Mr Raphael sold the site, together with much of the remaining land, to the Middlesex County Council for the provision of mental hospitals, which resulted in both Harperbury Hospital and Shenley Hospital being established. The green huts – originally used for visiting American airmen - were used by Harperbury Hospital for Art and Therapy for hospital patients, being known to patients and staff as "The Hangars".

Now, nothing remains of the London Colney airfield save the slightly undulating field.

© Philip Eastburn
philip.eastburn@mail.com





Janet Kilsby

Porters Park Golf Club – a welcome opportunity



Much has changed since Porters Park Golf Club (PPGC) first opened its doors in the late nineteenth century. While preserving its traditional heritage, the club has evolved over the years. PPGC is committed to being a high quality, friendly and welcoming golf club, based on equality of use for all. In recent years the club has established and affirmed this commitment, one that is perhaps best illustrated by the election in December of Janet Kilsby; its first lady Club Captain. While proud to be a members' club, there is always a warm welcome for visitors, societies and guests.

Porters Park offers many facilities in addition to a first class golf course. These include golf coaching and teaching provided by the club professional (David Gleeson 01923 854366) and the teaching professional

(Matt Masters 07876 598041). Lessons can be arranged for all standards of golfer from raw beginners to scratch golfers, men and ladies, young and not-so-young, boys and girls. You do not have to be a member to sign up. There is an active social programme throughout the year supported by members and their guests ranging from bridge to balls, concerts to cabaret, dinners to dances. Non-golfers are welcome to enjoy these events by joining PPGC as social members. Apart from services and locker rooms for golfers, the clubhouse offers a restaurant, bars and lounges together with conference and meeting facilities.

The course is host to a number of prestigious open amateur golf events – including the King George V Coronation Cup for men and the Centenary Cup for ladies – as well as being a regional qualifying course for the Open Championship. It has recently been lengthened (now over 6500 yards, par 70), with continuous course improvements reviewed and introduced under the watchful eye of former Ryder Cup player Neil Coles. An attractive and undulating parkland course with challenges abounding for those aspiring to low scores. One significant feature

is a brook that meanders through the course affecting play on ten of the holes. Other features include a range of fine mature trees supplemented by a regular tree planting programme and an icehouse used to store ice for the kitchens of the 'big house' in the 1800s.

The course has a well-deserved reputation for being one of the best in Hertfordshire and has received many complimentary comments from visitors. During the winter months, the course is open more often than many of the neighbouring clubs and the greens and tees continue to be used throughout the year.

The Club welcomes interest from potential new members both playing or social. Further information can be found on the PPGC website (www.portersparkgolfclub.co.uk) or by contacting Peter Marshall (Managing Secretary) on 01923 854127 or email enquiries@porterspark.com or writing to Porters Park Golf Club, Shenley Hill, Radlett WD7 7AZ.



The Festival this year will be held between 12noon and 4.30pm, on Sunday 8 June at Phillimore Recreation Ground.

This year we have several cycling events, with a group booked for the arena with trials bikes, and stunt jumping, and also an opportunity for you to come and "have a go" on a trials bike.

The Guides are also running a cycling challenge course, so all you bike riders out there put this in your diaries now!

We are planning a larger Food Court area than previously. A new addition this year will be a special area for little ones with entertainment, changing and feeding facilities.

There will also be all the old favourites: fun fair, dog show, stalls, music and dancing.

Viv Charrett

Councillor funding disability tennis

People with a wide range of disabilities have been able to take part in an eight-week tennis coaching course thanks to a grant from Aldenham West Borough Councillor, Caroline Clapper, who donated £250 to the Radlett Lawn Tennis and Squash Club from her Ward Improvement Initiative Scheme fund (WIIS).

Tennis Coach, Jordan Miles, who leads the disability tennis at the club, said "This course was a great success, we had sessions for people who are visually impaired, people with learning disabilities, and open sessions for people with any type of disability. There was a great atmosphere and everyone

enjoyed taking part. We are grateful that Cllr Clapper enabled us to hold the course as we are proud of our efforts to make the club truly accessible".

Cllr Clapper said "I'm so glad to have been able to help such a good cause, and very pleased that the course was a success. It's unusual for a tennis club to work so hard at becoming accessible and I applaud their efforts".

If you would like to have a scheme considered for WIIS funding, contact your local councillor. You can find out who your local councillor is by going to www.hertsmer.gov.uk or calling 020 8207 7558.

News from the HMS Aldenham Society



The major event for December was the Memorial Service to remember the 126 officers and crew who lost their lives when HMS Aldenham was sunk by an enemy mine on 14 December 1944.

Each year this service is attended by survivors, family, friends and the Association, whose role it is to organise the Order of Service and invite groups from outside the village, such as the Standard Bearers. This year the Sea Cadets from St Albans attended. Survivors, who attended the service were Ben Yates who laid a wreath, George Tullett and Alfie Stoddard.

This year was extra special. It marked the re-dedication of a new White Ensign, to replace the original Ensign that was retrieved from the sunken HMS Aldenham and donated to St John the Baptist Church, Aldenham by a

survivor. This year also saw the re-siting of the HMS Aldenham memorabilia to a position below the stained glass window depicting the ship. The act in itself was only achieved by the hard work of Church Warden, Christopher Treeves-Brown. In meetings over many months with the diocese hierarchy he obtained the permission that was needed every step of the way. The final word of approval came from the Archdeacon of St Albans, The Venerable Jonathan Smith, who after visiting the church, was impressed enough to offer to be present at the service and give the blessing.

I must also mention Trevor Oakes, who gave a tremendous sermon that incorporated the signs of the time in this country when HMS Aldenham was built in 1941, commissioned in 1942

and ended her short fighting life on that tragic day in 1944.

One survivor I must mention is 101 year old Tommy Leonard, who is in a retirement home in Halifax. Twenty years or so ago, Tommy attended a service, and looking through the Book of Remembrance he turned to a page naming those who had died of their wounds and found his own name there – a 'typical navy cock up'. A few months ago, Tommy was awarded the Arctic Medal by Senior Naval Officer, N E England accompanied by the Lord Lieutenant for Yorkshire.

After every service, we all retire to Aldenham Social Club for a tot of rum, and tales of 'derring do' and 'swinging the lamp' takes place. For further information of the HMS Aldenham Association please see our web site at www.HMSAldenham.com.

Bob Leader
Chairman

South Herts Beagles and Beagle Close

The editorial team of Around Radlett would like to make a correction to the article on page 6 of edition 101. The last paragraph stated that J Pierpont Morgan, former founder of J P Morgan Bank and one time resident Wall Hall Mansion, owned the South Herts Beagles. This is not correct and we apologise for our error.

The South Herts Beagles were kept and housed at the corner of Watford Road and New Road, opposite where Fair Field School stands today. The bus stop near the kennels was known as 'The Kennels'.

The pack of Beagles, some 40 dogs at a time, were looked after by Charles 'Bob' Young, who lived at Beagles Cottage in Loom Lane. He was huntsman and kennel master to the pack from the late 1920's to 1941. The beagle puppies were



kept at Beagle Cottage, much to the enjoyment of Bob's eight children. The photograph (*below left*) shows Bob with his three year old son Roy, together with a litter of puppies, beyond is the rear of the houses in Rendlesham Avenue.

The huntsmen and beagles hunted on foot for hares. Meets were held on a monthly basis, the highlight being on Boxing Day. The Meets would begin at Battlers Green House, as the photograph (*above right*) shows. A stirrup cup tippie started off the proceedings together with a drink of water for the beagles. The hunts then led off either across land then owned by the Campbell family i.e. along Common Lane, and across the fields to the Watford by-pass (the A41 as it is known today) or across Lovitts Farm on the fields opposite



New Road towards Munden. The eldest of the Young family, Daphne, Patrick and Enid would often run with the hounds.

It is probable that the hounds were owned by Richard 'Dick' Shepherd, who lived in Aldenham Avenue, with membership to the South Herts Beagles being open to all on a subscription basis.

Beagle Cottage occupied a large area of land and the Young family experienced several offers from HCC and developers to purchase it for housing. In the late 1960's the property was sold to HCC and Beagles Close was developed.

Jan Adams
(with information from
Roy and Diana Young)



ALDENHAM PARISH COUNCIL

www.aldenham-pc.gov.uk

To contact a Parish Councillor go to councillors@aldenham-pc.gov.uk

ALDENHAM EAST



Councillor Gill Balen
Chairman of the Around Radlett Working Party
Member of the Planning Committee
Member of the Parks and Open Spaces Committee
Member of the Finance and General Purposes Committee
*Trustee of the Gravel Allotments Trust
*Representative on Platt Subsidiary Foundation



Councillor Viv Charrett
Chairman of the Planning Committee
Member of the Community Development Committee
Member of the Around Radlett Working party
*Representative on Aldenham Alms Houses



Councillor Caroline Clapper
County Councillor of Herts County Council
Borough Councillor of Hertsmere Borough Council



Councillor Saleem Khawaja



Councillor Neil Payne
Chairman of the Council
Chairman of the Strategic Planning Committee
Member of the Planning Committee
Member of the Finance and General Purposes Committee
*Representative on the Radlett Centre Trust



Councillor Ron Worthy
Vice Chairman of the Parks and Open Spaces Committee
Member of the Planning Committee
Member of the Community Development Committee
Member of the Strategic Planning Committee
Member of the Around Radlett Working party
*Representative on Platt Subsidiary Foundation

ALDENHAM WEST



Councillor Tony Butwick
Chairman of the Parks and Open Spaces Committee
Member of the Community Development Committee
Member of the Around Radlett Working Party
Member of the Finance and General Purposes Committee
*Representative on the Radlett Village Institute Management Committee



Councillor John Howley
Chairman of the Finance and General Purposes Committee
Member of the Strategic Planning Committee
Member of the Parks and Open Spaces Committee
Member of the Community Development Committee
*Representative on Radlett Village Institute Management Committee
*Representative on the Radlett Centre Trust



Councillor David Lambert
Chairman of the Gravel Allotments Trust
Member of the Parks and Open Spaces Committee
Member of the Planning Committee
*Representative on Association to Contain Elstree Aerodrome
*Representative on Aldenham War Memorial Hall Trust



Councillor Estelle Samuelson
Chairman of the Community Development Committee
Vice Chairman of the Planning Committee
Member of the Finance and General Purposes Committee
Member of the Around Radlett Working Party
*Member of the Aldenham and Bushey Community Safety Partnership



Councillor Garry Walton
Member of the Parks and Open Spaces Committee
Representative on the Aldenham Country Park Committee



Councillor Chris Wilkins
Vice Chairman of the Parish Council
Vice Chairman of the Finance and General Purposes Committee
Member of the Parks and Open Spaces Committee
Member of the Community Development Committee
Member of the Strategic Planning Committee
Member of the Around Radlett Working party
*Representative on RAIFA (Radlett and Aldenham International Friendship Association)

*Members of outside organisation

Parish Council Offices

Aldenham Parish Council, 1st Floor, The Radlett Centre
Tel: 01923 856433/858399, Fax: 01923 852214
Email: clerk@aldenham-pc.gov.uk

Office Opening Hours: 10am - 4pm Mon to Fri,
Parish Manager: Peter Evans
Email: peter.evans@aldenham-pc.gov.uk

All parish councillors can be contacted
at the council office.

Hertsmere Borough Council

Aldenham East Councillor John Graham cllr.john.graham@hertsmere.gov.uk	Aldenham West Councillor Danny Griffin cllr.dan.griffin@hertsmere.gov.uk
Councillor Charles Goldstein cllr.goldstein@hertsmere.gov.uk	Councillor Caroline Clapper carolineclapper@hertsc.gov.uk

Hertfordshire County Council

Caroline Clapper
carolineclapper@hertsc.gov.uk

MP for Hertsmere

James Clappison
Email: anna.pandoulas@parliament.uk
Tel: 020 7219 4152

Forthcoming Committee Meetings March – May 2014

Contact the Parish Council office for times of meetings.

March

Mon 3	Planning
Fri 7	Strategic Planning
Mon 10	Annual Parish Meeting
Tues 11	Finance and General Purposes
Wed 12	Parks and Open Spaces
Mon 17	Planning
Tues 25	Full Council

April

Thur 3	Community Development
Mon 7	Planning
Thur 24	All Faiths
Mon 28	Planning
Tues 29	Council

May

Mon 12	Planning
Wed 14	Parks and Open Spaces
Mon 19	Planning
Tues 27	Full Council & Annual Meeting.

The Annual Parish Meeting, at The Radlett Centre, will be taking place on Monday 10 March 2014 at 8pm. Please keep this date free in your diary as it is your opportunity to raise questions, and find out what your Council does for you.

Minutes from the Committee meetings are uploaded to the website once they have been approved and signed by the Chairman at the following committee.
Please see all dates, agendas and minutes for Council meetings on www.aldenham-pc.gov.uk



ANNUAL PARISH MEETING

You are invited to the Annual Parish Meeting held at 7.30pm on Monday 10th March in the auditorium of the Radlett Centre.

We are looking forward to hearing your views on the Pavilion Project and any other topics about the area you live in.

All residents of Aldenhams Parish Council are welcome. Refreshments are available after the meeting.

If you would like to know any more about this meeting please contact Lucy Jackman on 01923 856 433 or email community@aldenham-pc.gov.uk

Update on tree planting in the Parish

As part of effective management of the green spaces around the parish, this Council is committed to tree replanting (subject to finance). The Council planted a tree nursery in 2011, with the help of the community, and it is envisaged that the saplings in this nursery will soon be ready to plant out. The nursery will be an ongoing project and the grounds maintenance team regularly review our green spaces to see where trees from the nursery can be used to enhance areas, fill in gaps or create copses. In its approach to tree management, the Council's guiding principle is that, wherever possible and finances allow, trees that die, or become diseased

and have to be felled, will be replaced somewhere in the parish.

Recently some Himalayan Birch trees have been planted in front of the depot building in Phillimore Recreation Ground, and these trees should look very attractive when established. Added to this, there are plans to plant six whitebeam alongside the footpath in the Rec early in 2014, which will enhance the greenery of the Rec as a whole. Longer term the Council plans to plant a few trees from the nursery in the corner of The Rose Field, along the boundary with Tykeswater, to help screen the railway.

Claire Fletcher

The Pavilion Project

For some time now the future of the Pavilion at the Phillimore Recreation Ground has been discussed at Full Council.

In order to meet modern requirements for the Ground Staff, and to replace the condemned storage units for the Council's extensive range of equipment, the new depot was constructed some three years ago. As a result, the Pavilion which has become unfit for purpose, is now only used by football teams for changing and showering. Even this facility is in a state of dilapidation. The size, shape and condition of the building is such that it is now no longer attractive to other potential users.

With all these factors in mind, APC has a vision to refurbish the existing building so that it can become a multi-functional community building. Residents have been invited to give their views about the Pavilion on many occasions over the past few years and, as a result, very many different suggestions have been put forward for consideration.

APC would now like to consult with residents in a more formal way so that a final decision can be made as to how to move forward with this vision. One

thing is certain; the building, as it is now, cannot remain. If the Council have the backing of the local community to go ahead with this project, planning permission would need to be sought and funding put aside so that a new community building can become a reality.

Now is your chance to come along, listen to the proposals for the possible refurbishment of the Pavilion, ask any questions and view some possible schemes. We want this to be a local project that everyone can be a part of from the beginning to the end.

However, if APC find that a new community building at the Phillimore Recreation Ground is not wanted, there may be no other alternative but to demolish the existing Pavilion.

APC look forward to seeing as many people as possible at the Annual Parish Meeting on Monday 10th March 2014 at 7.30pm at The Radlett Centre. The presentation regarding the refurbishment of the Pavilion will take place at this time.

Estelle Samuelson



Radlett Youth Council are currently looking into the possibilities of a bus to run from Radlett to an underground station.

They are inviting residents of Radlett to take part in a survey which can be found on the APC website www.aldenham-pc.gov.uk or by filling out a survey in the Council offices.

To find out more about this or to join the Youth Council please contact Lucy Jackman on 01923 856433 or email community@aldenham-pc.gov.uk





Neighbourhood Plan

A formal request has been submitted to Hertsmere Borough Council, which shows the area that is to be covered by the Neighbourhood Plan. This will focus on Radlett, as an outline plan has already been agreed for the rural part of the Parish.

The consultation period for the plan has finished with no major objections received. The process now is that the whole matter has to be considered by Hertsmere Borough Council Executive Committee. Final recommendations will be made by HBC's Full Council at the next meeting at the end of March.

A working party will be formed to set out recommendations for the future of Radlett. If there are any residents who believe that they have any specific expertise in this area (town planning, legal etc) and might like to join and help shape Radlett's future, please contact Peter Evans – Parish Council Manager at manager@aldenham-pc.gov.uk

Viv Charrett

CALLING ALL ARTISTS

A front cover painting for the next edition of 'Around Radlett' is required to enhance the forthcoming Radlett Festival on Sunday 8 June 2014.

To inspire you, Viv Charrett, Chairman of the Radlett Festival, will be pleased to send you photo's of past Festival's. Contact viv@charrett.com.

Paintings are required by 8 April 2014 and can be delivered to Aldenham Parish Council, 1st floor, The Radlett Centre, 1 Aldenham Avenue, Radlett WD7 8DP. Enquires to Lucy Jackman email: community@aldenham-pc.gov.uk or telephone 01923 856433

Interested in where new homes will go?

Draft plans which set out what development takes place in the borough, and where, have been agreed by the Hertsmere Borough Council's Executive Committee and will be out for consultation soon. If you are interested in issues such as where and how new homes could be built, what your local high street looks like and the boundary of green belt land then this is your chance to get involved.

All local authorities must have a local plan in place which sets out how and where their area could be developed, and with what. The council's plan – which will guide development in the area until 2027 – is made up of a series of documents, including an overarching Core Strategy (approved in January 2013) and our Site Allocations and Development Management Policies, which are due out for consultation for six weeks from the beginning of February.

The Site Allocations and Development Management Policies identify development sites for a range of land uses and also includes detailed planning policies to guide decisions on individual planning applications.

Borough Cllr Harvey Cohen, portfolio holder for planning and localism, said: "These are critical plans which we want people to give us their views on as they will have an impact on people and the communities they live in.

"We have responsibilities to provide adequate land for development, whether that is for retail or for new homes, but we also want to ensure our high streets are supported, that our communities are safe and pleasant places in which to live and work, that areas are protected and that all the needs of our diverse communities are met. The Government also introduced a National Planning Policy Framework in 2012 which

includes a requirement for councils to have a clear presumption in favour of sustainable development in their plans.

"Sometimes that does mean that we have to make difficult local decisions and so we are inviting residents to get involved in the consultation so we can continue to make well-informed judgements about the area and its future."

How can you be involved?

The draft plan has just been approved by the Executive for it to go out for public consultation. The period of consultation will be six weeks and is expected to start at the beginning of February. As part of the consultation, letters will be sent to residents who will be directly affected by certain significant proposals as well as all key agencies and service providers such as Hertfordshire County Council, town and parish councils and community organisations.

As soon as the consultation starts, we will publish details on our website and through our social media channels @HertsmereBC on Twitter and on www.facebook.com/hertsmere. In the meantime, for more information, visit www.hertsmere.gov.uk/siteallocations.

If you would like to be added to our mailing list to ensure that you are consulted directly on the proposals please email local.plan@hertsmere.gov.uk or call 020 8207 7527.

Large & small

Gem'll fix it

Just phone Gem on
01727 872136
Mobile: 07877 926130

Carpentry a speciality
Electrics • Decorating • Plumbing
Flat Packs • Plastering • Tiling
Replacement Windows & Doors
Bathrooms & Kitchens • Flooring
- and outside work

Full Home Maintenance
Park Street based
Free estimates given
References available

Virtually all jobs

January 2014 – The Radlett Centre Board Trustees Vacancy (Voluntary)



the radlett centre

The Opportunity

The Radlett Centre is a vibrant theatre which offers opportunities to both professional shows and local amateur dramatic societies. There are also meeting rooms on the first floor which are various sizes, allowing flexibility in terms of capacity and fee income.

The Centre shows local artists work and is regularly used by music clubs and community groups. It also houses the local council offices, as well as surgeries for the police, citizens advice bureau and blood donors.

Skills and Qualification

A good team player. Management and especially marketing skills. Willingness to participate in debates on issues, and forward thinking.

The Organisation

The Radlett Centre Board has eight members which administer the charity. The main board meets four times a year to discuss policy and review the budgets etc. There are also two sub-committees for 'Risk' & 'Business Planning'. The board have also appointed a General Manager with delegated authority for operational matters, including bookings, finance and employment.

For help with completing this application or for further information contact The Company Secretary Peter Evans on 01923 856433 or email co.secretary@radlettcentre.com.

The Radlett Centre Trust endorses equal opportunities in all aspects of recruitment and working practices. We

are particularly looking for individuals with experience and skills in the following areas:

- marketing
- a good understanding of social networking.

You should be aware that this is the first stage of your application process. If accepted by the Nominations Committee, you will be recommended as a nominated candidate to the members.

A shortlist will be published prior to the AGM and the members will elect the Board of Trustees at the Radlett Centre Trust AGM. It is anticipated that this will take place in or around the end of April 2014.

Greg Dexter



The Three Horse Shoes, Letchmore Heath

In the Spring of 2013 Aldenham Parish Council requested that Hertsmere Borough Council include The Three Horse Shoes, Letchmore Heath as an Asset of Community Value. This they did on 20 May 2013 and subsequently the owners of The Three Horse Shoes indicated that they intended to dispose

of the asset, thus leading to a six-month moratorium during which a community interest group may come forward to make an offer for the asset.

An Industrial & Provident Society, effectively a co-operative, has been formed by villagers of Letchmore Heath to purchase the pub, however neither the pub's owner, nor their agent, have been prepared to enter discussions

regarding the sale.

The moratorium on the sale expired on 9 December 2013; prior to that date a formal offer was made to the owner of The Three Horse Shoes by the Co-operative to which a reply has not yet been received. The offer is open-ended so remains in force, unless withdrawn by the Co-operative.

David Lambert

Bespoke Framing Service



Leading Art

105 Victoria Street
St. Albans AL1 3TJ

Call Jean Dennis

Tel: 01727 834 391

SERVICED OFFICES AVAILABLE IN
RADLETT VILLAGE



We provide:

- Fully serviced self contained office suites both short and long term licences.
- Consulting room available half or full day basis.
- Onsite parking and visitor parking.
- Close to Radlett station.

t: 0845 872 4949 e: info@thecornworks.co.uk

Call in and see us at:

The Corn Works, Station Road,
Radlett, Hertfordshire, WD7 8JY

www.thecornworks.co.uk

RADLETT LAWN TENNIS AND SQUASH CLUB 

425 Watling Street, Radlett, Herts, WD7 7JG

WELCOMES PLAYERS
ALL AGES AND ABILITIES

Membership Enquiries

admin@rltsc.co.uk
01923 854523
www.rltsc.com

4 Glass Back Squash Courts
11 Tennis Courts (6 Floodlit)

Club, District and County Leagues
Social Tennis & Squash
Coaching for all Abilities

Friendly Bar
Social Functions
Club Tournaments

The Radlett Lawn Tennis and Squash Club, Registered Charity No. 1117605

Donald Evans (1926 - 2013)

Donald Evans was employed as Parish Clerk by Aldenham Parish Council for eleven years from October 1980 until his retirement in 1991. His time at Aldenham Parish Council was spent at the 'old' building at 1 Aldenham Avenue that had a single storey library attached to it.

Life at the Parish Council offices was very different in those days. The building was on three floors and was looked after by resident caretakers, Mr and Mrs Roland Munt, who occupied the top floor and one room and the kitchen on the ground floor. It has been said that Mrs Munt 'ruled the roost', she insisted that shoes were wiped so as not to spoil her polished floors and all evening Parish Council meetings were finished by 9.30pm. Stories of that time were occasionally relayed by Donald and always accompanied by an amused smile. Also resident, was Moggie, a stray black cat, who lived in the garden shed, following the Munt's retirement Donald ensured she was fed seven days a week.

Donald lived with his wife Doris in Elstree. He recalled that he had thoroughly enjoyed his time with Aldenham Parish Council and was regarded by all who knew him as a courteous, kind and considerate person, always helpful to the staff, councillors and the community alike – a real gentleman. He was instrumental and proud of the improvements to



Phillimore Recreation Ground and often took his three grandsons to play in the park.

Following time spent in the army, Donald spent nearly thirty years with the Metropolitan Police reaching the rank of Chief Superintendent. From 1975 to 1978 he commanded the Police Cadet School at Hendon.

His big passion was rugby. Following his retirement he dedicated a lot of his time to produce a book on the history of Metropolitan Police Rugby. The book was published in 1998. Donald continued to watch rugby and sometimes attended matches at Tabard RFC.

*Jan Adams
(with advice from Geoff Evans)*

PUBLIC MEETING OF THE RED HOUSE GROUP

On THURSDAY 13 MARCH 2014

**AT THE VISION HALL,
WATLING St, RADLETT**

AT 7.45pm

A REVIEW OF NHS SERVICES IN RADLETT AND WEST HERTS

Speakers:

**Samantha Jones, Chief Executive
Officer, West Herts Hospital Trust**

**Dr. Mike Van Der Watt, Medical
Director, West Herts Hospital Trust**

**Dr. Nicolas Small, Chair, Herts
Valley Clinical Commissioning Group**

**A Senior representative from the
Red House Practice**

Doors open and coffee 7.30pm

ALL WELCOME



NEW YEAR'S HONOURS AWARD

John Apthorp, previously honoured with an OBE, has now been appointed a CBE, *Commander of the Order of the British Empire*, in Queen's New Year's Honour List. The Award was given in recognition of various grants given to local charities through the John Apthorp Charity and the Milly Apthorp Charitable Trust. John was given the Freedom of the Borough of Barnet in 2008. He is a generous supporter to many local societies and organisations. John was educated at Aldenham School and was a pupil of Paull's House from 1949 to 1953. The family began their business with the food chain BEJAM's, the name derived from member's Christian names, the 'J' standing for John. This was later sold and became Iceland. He was founder and chairman of Majestic Wines for some twenty years.

Our congratulations to John Apthorp CBE on this very well deserved Award.

Platt Subsidiary Foundation: Platt Awards 2014

**Are you under 25? Living
in Radlett, Aldenham,
Shenley, Letchmore Heath
or Roundbush?**

**Are you planning an
expedition or project?**

Apply for a Platt Award!

You must show sufficient drive and initiative to be planning an expedition or project away from home where you will face a variety of physical and intellectual challenges.

These challenges could be provided by the Scout Association, your School, University or gap year schemes arranged by charities or specialist organisations.

Awards, from £200 to £800 are granted to an individual rather than as a contribution to general funds. You must raise a percentage of the necessary funds.

Interviews take place in April and Governors' decisions announced by the

middle of May 2014.

Application forms can be obtained from the Secretary and should be returned by 31 March 2014 to:

**Alan Taylor
The Secretary
The Platt Subsidiary Foundation
57A Loom Lane
Radlett, Herts, WD78NX**

DISCLAIMER

The words written in the articles contained in this edition are the authors own. No responsibility can be accepted for errors or omissions. All copy correct at the time of going to press. Edited and Produced by Aldenham Parish Council, The Radlett Centre, Aldenham Avenue, Radlett, WD7 8HL www.aldenham-pc.gov.uk



Christ Church's 150th Anniversary Celebrations

PROGRAMME OF EVENTS



Christ Church

27 April	Rev'd Maureen Taylor	1 June	Rev'd Canon David Ridgeway
4 May	Rev'd Canon Grant Fellowes	8 June	Rev'd Canon Gordon Manley
11 May	Rev'd Stella Halmshaw	15 June	The Ven Malcolm Lesiter
18 May	The Ven Jonathan Smith	"	Rev'd Julia Boothby
25 May	Rev'd Canon Mike Carter	22 June	Rev'd Jim Smith

Wed 2 July
Rev'd Canon Christopher Newton

Sun 26 October
Rev'ds William and Annie Hogg

Saturday 28 June

Vision Hall Display of photos and memorabilia since 1864 (until 6 July).

Christ Church Field Classic Car Show including BBMF flypast, 4 String Ukele Band, charity stalls etc.

Christ Church Celebrity switch-on of exterior floodlighting.

Christ Church Radlett Choral Society's 60th Anniversary Concert including choir from the French twin-town of Louveciennes.

Sunday 29 June

Christ Church Young person's special presentation to celebrate the Anniversary.

Monday 30 June

Christ Church Evening concert featuring local junior school choirs.

Wednesday 2 July

Christ Church Variety concert including the award winning Amersham A Cappella Choir, Radlett Light Opera, Phoenix Concert Band, Roy Willox and friends jazz ensemble, organ solo by former resident Giles Turner, Nigel Rogers and other local artistes.

Friday 4 July

Christ Church Flower Festival interpreting the theme "Let's celebrate!" (until 6 July).

Saturday 5 July

Vision Hall Celebration Dinner under the direction of TV Master Chef finalist Amanda Burningham (nee Barrett) – with surprises!

Sunday 6 July

Christ Church Thanksgiving Service led by the Bishop of St. Albans. Parishoners' presentation to Christ Church.

Christ Church Field Lunchtime and afternoon picnic with entertainment from the Borehamwood Brass Band.

Timings, ticket availability/prices (where applicable) and further details will be published on notice boards and separate flyers, as required, nearer the time. Refreshments will be offered at most events.

Further information available from the organising committee including Brian Davis, Adrian Morrish and Margaret Price (contact: bwd.astra@ukgateway.net)

Registered Charity No. 1132088

January, 2014

Aldenham and Bushey Community Safety Partnership (CSP)



Chris Adamou has joined the Radlett Safer Neighbourhood Team as a Police Community Support Officer (PCSO) to support the PCs who cover the area.

Chris said "I have been out and about meeting residents and finding out what is affecting their quality of life. You can speak to me about any issues from anti-social behaviour to speeding to neighbourhood disputes. I want to help and will do my best to solve an issue with police officer colleagues and partner agencies, including Hertsmere

Borough Council."

Chris works with the familiar neighbourhood team of Phil Tuck, Iain Wise, Pete Glover, Gerard Handscombe and new officer Sophie Stalley, who all cover Radlett and Bushey. They are supported by intervention officers who respond to 999 calls as well as many other specialist departments across the Force.

Bushey & Radlett Neighbourhood Sergeant Noel Buckley said "Officers continue to be a visible presence supported by PCSO Chris Adamou.

"The team spends the majority of their

time out and about on patrol dealing with crime and neighbourhood issues. You can contact the team via the non-emergency number, 101 or speak to them when they are out and about or on their Airwave radio (when they are on duty) on 01707 354192."

To support the work of the local officers the Hertsmere Community Safety Partnership (CSP) holds meetings with residents, businesses and interested parties to discuss and raise local issues. Partners including Parish and Borough Council and Councillors, the police and fire service and housing associations give updates on current issues.

The next meeting will be held on Monday 24 March 2014 at 7pm (venue to be confirmed). For more information please contact partnership.support@hertsmere.gov.uk or call 020 8207 7801 or visit www.hertsmere.gov.uk/csp



County Commissioner Julie Richards congratulates Guide Charlotte Day on obtaining her awards.



Radlett District Girlguiding celebrate a successful year

Radlett District Girlguides had a lot to celebrate at their annual Carols Round the Campfire event held at the Guide Hut, Woodland Lodge in Scrubbits Park Road, Radlett on Tuesday 17th December. Special guests included Central Division Commissioner Myra Austen and Hertfordshire County Commissioner Julie Richards. Around 80 Rainbows, Brownies, Guides and Rangers all joined together to sing Christmas Carols in front of a roaring log fire.

Part of the event was dedicated to celebrating the achievements of girls and leaders in the Radlett District. Julie Richards was on hand to present an array of awards and qualifications together with Radlett District Commissioner, Catherine Bilsborough.

Baden Powell Adventures, the highest Guiding award for 12-14 year olds, were awarded to Laura Holden and Elisheba Andersen from 2nd Radlett

Guides. Leadership Qualifications were presented to Lisa Illingworth-Law of 3rd Radlett Brownies; Jessica Breakwell of 3rd Radlett Rainbows and Chloe Queenan from 2nd Radlett Brownies. An Overnight Licence was presented to Emma Hetherington of 1st Radlett Rangers.

A special presentation was made to fourteen year old Charlotte Day who was celebrating completing all 41 Guiding Special Interest Badges as well as her Baden Powell Adventure Award and a Camp Permit. Charlotte was also a member of a small group of girls who braved the elements on Friday 6 December as part of the Annual St Albans Abbey Sleep Out in aid of a selection of Hertfordshire charities for the homeless. Also taking part were Rangers, Jade Scott, Annabel Jennings, Claire Bilsborough and Guide, Sarah Glover together with District Leader Nicola Day. They all completed the

challenge and are now busy collecting their sponsorship pledges.

Beryl Cushion, a local guide leader for many years, and more recently a Leadership Mentor and Trefoil Guild member was presented with a gift to thank her for many years of service within the District. Serving refreshments and selling gifts were 1st Radlett Rangers including Annabel Jennings who has recently been selected as one of two girls from Hertfordshire to attend the World Scout Jamboree in Japan in 2015. Other Rangers were raising money for a Ranger visit to the Girlguiding Chalet in Switzerland in 2015.

Radlett currently has 8 units catering from Rainbows through to Rangers and providing adventures and activities for over 150 local girls between the ages of 5 and 18 years of age. For further information on getting involved visit: www.girlguiding.org.uk



1st Radlett Scout Leaders celebrate long service awards



Leaders from 1st Radlett Scout Group (all in front row) were presented with their long service at an Elstree Scout District awards evening. (Picture courtesy of the Borehamwood & Elstree Times)

Leaders Fiona Turner, Sue Rolfe and Sarah Jacobs from 1st Radlett Scout Group (all in front row) were presented with their long service at an Elstree Scout District awards evening. Cub Leader Fiona received an award for 15 years service and Beaver Leaders Sue and Sarah received awards for 10 years and 5 years respectively. Sue also received her Wood Badge which is awarded for completing all the training modules. All the awards were presented by County Commissioner Rikki Harrington, assisted by acting District Commissioner Dave Pullen. Hertsmer MP James Clappison and the Deputy Mayor of Hertsmer were also present.

Group Scout Leader Jackie Glover said "These Awards show what a great team of leaders we have in the 1st Radlett Group". 1st Radlett now have two Beaver colonies and would like to open a second Cub Pack to enable all the younger members to continue with their Scouting when they reach 8 years old. If you think you could help please contact Jackie Glover at gsl.1stradlett@googlemail.com. Full training will be given.

Brownies start Centenary Year with a sleepover in local church

2014 is the centenary of Brownies and packs have been challenged to hold sleepovers in different places throughout the year. Jointly the three Radlett Brownie Packs took up the challenge.

On Thursday night 2 January, 24 Brownies slept in Christ Church, Watling Street. Before settling down



24 Radlett Brownies enjoyed cake and activities before a sleep-over.

to sleep, the girls ate birthday cake, played Victorian parlour games and learnt campfire songs. They also heard about the homeless, as the Brownies were being sponsored to raise money for two local homeless charities, Open Door in St Albans and the Watford New Hope Trust.

Team Rector and Vicar of Radlett,

Rev'd Javaid Iqbal said "Christ Church was delighted to host the Brownies particularly as the church also supports the two homeless charities".

Over £200 was raised. Many other activities will be planned to celebrate the centenary. Further information can be obtained from Karen Clout on 01923 854403

Fundraising for the Philippines

Melissa Tustain together with two other local mums, Elizabeth Ibia and Deborah Cohen, were inspired to raise money after seeing the devastation caused by Typhoon Haiyan to the people of the Philippines. Elizabeth was born in The Philippines so the cause was close to her heart and we worked closely with her Filipino church, The Christ Vineyard Praise Ministry.

We decided to host a fund raising party for local mothers with babies, and also organised a raffle. We approached local businesses and were delighted by the response we received, with donations from Capelli Hair Salon, Vila Flora, M & C Interiors Ltd, and Cafe in the Orchard amongst many others. We had 18 prizes donated locally. We sold tickets at the Radlett Christmas Fair and at local toddler groups and held a Christmas party for babies. A ball pit from Extreme Soft Play was donated together with professional face-painting and cupcakes from Denise Scott.

We raised £534 in total. We were overwhelmed by the kindness shown by Radlett businesses and local families – thank you everyone.

Melissa Tustain

An update from Harperbury Free School

We have been extremely frustrated by the length of time negotiations have been going on to secure the Harperbury Hospital site we want for our school. This is an issue of considerable concern to parents and the school. This process is a matter between two Government departments, so it's out of our direct control. We have recently taken actions, including complaining to the Free Schools Minister, Lord Nash, and asking our two local MPs, Anne Main

and James Clappison, to help speed up the processes needed to do the deal. We are confident that these actions will produce a positive result very soon. We are absolutely committed to being able to confirm where your children will be going to school in September when we send you an offer letter in March and we will let everyone know as soon as we can.

Martin Blain
Headteacher

Radlett Flower Club

The Radlett Flower Club Meets on the third Tuesday of the month (except in August and December) at 2pm at St Johns Hall, Gills Hill Lane, Radlett.

Our monthly meeting includes flower arranging by a NAFAS demonstrator, with an interval for a cup of tea and a chat. Social events are held through the year, which include an outing, Members afternoons, Garden Party and Christmas Lunch. There is an annual subscription but visitors are very welcome to come.

Further information please contact Mrs Sylvia Bullwinkle (President) on 01923 856963



**Radlett
Baby Bank**

Are you looking for a babysitter?

And would like the reassurance of an experienced local parent to look after your children. Then **The Radlett Baby Bank** could be for you.

The original group was set up 20+ years ago and is a successful, tried and tested system whereby parents earn points by babysitting for each other and then spend them by going out. No cost is involved.

The current group is looking to pass on the concept and its experience to new members now most of our children are older.

To find out more, please contact
Jayne: srcarr@virginmedia.com
Telephone 01923 855200

STUART THORNE

Bespoke Hand Tailored Suits
of the Highest Quality



Ladies and Gents Alterations by Expert Tailors
22-24 Aldenham Road, Radlett,
Hertfordshire WD7 8AX
01923 857502

Safe and happy at Tomten Kennels, Cattery and Grooming Salon



Take the worry out of holiday arrangements by ensuring
that your pets are in safe, professional hands.
15 London Road, Shenley
www.tomten.co.uk Tel. 01923 856264



The Oakridge Practice Footcare Clinic

HPC registered Podiatrist / Chiropodist
01923 839 796
www.oakridgepractice.com
244, Radlett Road, Colney Street,
St Albans, AL2 2EN

NETHERCOTT

INDEPENDENT FAMILY FUNERAL
DIRECTORS & MONUMENTAL MASONS
OF DISTINCTION SINCE 1911

20 ALDENHAM ROAD,
RADLETT WD7 8AX
TEL: 01923 852899
98 SHENLEY ROAD,
BOREHAMWOOD WD6
TEL: 020 8953 9555



AROMA

Taste The Difference

Contemporary Indian Takeaway

Free Home Delivery on orders over £12.00
Tel: 01923 855355

Winner British Curry Award 'Chef of the Year'

Opening Hours: 5.00pm - 11.00pm -
Open 7 Days a week

6 Battlers Green Drive,
Radlett, Herts WD78NF

www.aromatakeaway.com

TJA

Independent Financial Advisers

44 Watling Street, Radlett,
Herts WD7 7NN
www.tjal.co.uk

Tremellen Jeffrey Allan Limited (TJA) is an
independent firm of financial advisers, established
in the 1930's and based in Radlett.

The services TJA provide:

- Retirement Planning
- Investments
- Equity Release
- Mortgages

For a free initial consultation, without obligation
please contact us.

Tel: 01923 333199 Email: info@tjal.co.uk

JB TV SERVICES

EST 1960

REPAIRER OF
LCD/PLASMA/TV/VIDEO/AUDIO/DVD



SONY
JVC
Panasonic

- REPAIRS TO ALL MAKES & MODELS
- AUTHORISED REPAIRERS OF
SONY, JVC, PANASONIC

TV/VIDEO/DIGITAL/TUNING/FREEVIEW
INSTALLATION & SET UP
TEL: 07961 420 535

OVER 40 YEARS IN RADLETT

• DOMESTIC • COMMERCIAL

WRENS ELECTRICAL LTD



COMPLETE REWIRES & ALL
ASPECTS OF ELECTRICAL
WORK UNDERTAKEN

- Lighting • Heating • Distribution Boards • Sockets • Inspection •
Fault Finding • Electrical reports • LED • Fuse Boxes • PA testing •
Part P regs • Oven repairs • T.V. • Immersion Heaters •
3-phase Installations • Cat 5/6 cabling • NICEIC test and inspect

RADLETT 01923 854907
email: martin.wren@sky.com

1 Aldenham Road Radlett WD7 8AU

Why live with pain?

Treatments available include:

Sports injuries, Nerve/Sciatica Problems, Neck & Shoulder Pain,
Tennis Elbow, Frozen Shoulder, Hip & Groin Pain, Back Pain,
Arthritic Pains & Rheumatism, Wiplash & Cranial Osteopathy,
Pregnancy Aches & Pains.

Radlett
Osteopathic Clinic

Maria Matthews
New Road, Radlett WD7 8LX
tel: 01923 852259
web: www.radlettosteopathy.co.uk



Ken Hodson

Local Computer Hardware & Software Repairs
Upgrades and Advice for Home and Business

Ken Hodson Computer Services Ltd.
115 Tassell Hall, Redbourn, Herts. AL3 7JE
T: 01582 794723 M: 07974 156743
Email: enquires@kenhodsoncomputerservices.co.uk
www.kenhodsoncomputerservices.co.uk

- No fix, no fee for all repairs - you have nothing to lose.
- Low hourly rate.
- Most repairs carried out in your home, if not the computer will be picked up and delivered back to you.
- Upgrades of hardware and software.
- Friendly training and instruction available in plain English.
- Problems with Windows / Applications / Games / Internet / networks fixed.
- Advice given on upgrades - many older computers can be upgraded at a fraction of the cost of a new machine.



INDEPENDENT, BESPOKE VETERINARY CARE

Halian
Veterinary Centre

Ample Parking, Friendly Staff, Dog and Cat Waiting Rooms
Free New Kitten/Puppy Checks, Dental Checks and Weight Clinics

Modern Facilities in
a Traditional Setting

@ The Red Cow, 107 Radlett Road, Frogmore,
Herts AL2 2LA www.halianvet.co.uk 01727 874700



CARPENTRY
KITCHENS & BATHROOMS
FITTED WARDROBES
CUSTOM MADE CABINETS
DOORS SUPPLIED & FITTED

FOR DECORATING
INTERIOR & EXTERIOR
SPECIALIST PAINT EFFECTS
WALLPAPER HANGING

WORKING IN RADLETT FOR
OVER 15 YEARS

EXPERIENCED TRADESMAN
REFERENCES AVAILABLE on REQUEST
FOR A FREE QUOTATION & DESIGN ADVICE

CALL DAN on
07808 401678 or 01727 825691
Email: dacmaintenance@btinternet.com



Please recycle responsibly

Paper used is from
well-managed/sustainably
managed forests



Designed and Printed by Caprin Printers

Unit 2, Park Industrial Estate, Frogmore, St. Albans, Herts, AL2 2DR.
T: 01727 872 021 W: www.caprin.co.uk