



# Around Radlett

SUMMER 2014

# 103

The Newsletter of Aldenham Parish Council • [www.aldenham-pc.gov.uk](http://www.aldenham-pc.gov.uk)



'Summer Fête' by Maggie Baker





Councillor  
Neil Payne

## Chairman's Message

I must first welcome Mrs Jacqueline Lefton as a new Parish Councillor with effect from 27 May 2014. She was selected at the Parish Council meeting on 29 April to fill the vacancy arising following the resignation of Caroline Clapper as a Parish Councillor in early March 2014. We thank Caroline for her past service on the Parish Council, where she has been able to contribute widely in view of her roles on both the Borough and County Councils – she continues in both such roles.

I am delighted to report that the Neighbourhood Plan Area was formally

approved by Hertsmeire Borough Council in early April. The Parish Council has now started work in earnest to undertake the necessary consultation and research in order to formulate a Neighbourhood Plan.

At the Annual Parish Meeting on 10 March, a detailed presentation on the proposed Pavilion project was made by Sean Stanley, the architect retained by the Parish Council, and myself. Overall, there has been positive feedback from residents, with the underlying message that *"the existing building should be put to better use."*

In the Phillimore Recreation Ground, there have been a number of developments. The six whitebeam trees planted along the footpath are

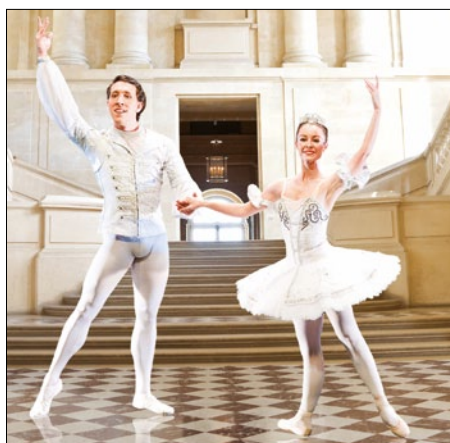
a welcome addition to the planting that took place earlier in the year alongside the Depot perimeter. In addition, the Council is most pleased to see the new catering unit (in the children's play area) which officially opened on 5 April.

I have just returned from a marvellous morning at the Rotary Fun Run at Tabard Rugby Club on Bank Holiday Monday. This is an event enjoyed by hundreds of residents, old and young alike, and was today blessed by sunny weather. May I offer a big thank you to Rotary for organising the event, the proceeds of which go to charity.

Councillor Neil Payne  
Chairman  
Aldenham Parish Council



[www.radlettcentre.co.uk](http://www.radlettcentre.co.uk) [www.radlettcentre.co.uk](http://www.radlettcentre.co.uk) [www.radlettcentre.co.uk](http://www.radlettcentre.co.uk)



VFB Cinderella – Sunday 1 June at 2pm & 5pm

### JUNE

#### Art Exhibition

**Ground Floor Gallery** – Bonnie Friend  
**Apthorp Gallery** – Sharòn Cohen

**Sun 1 VFB Cinderella 2pm & 5pm**

**Thur 5 100 Years of Jazz 8pm**

**Sat 7 Do You Hear the People Sing?**  
2pm & 7pm

**Wed 18 The Trials of Oscar Wilde 8pm**

**Thur 19 Art Society Lecture 8pm**

**Fri 20 Jethro 7.30pm**

**Sat 21 Jukebox & Bobbysox**  
7.30pm

**Sat 28 Call Me Merman 2.30pm**



the radlett centre

BOX OFFICE: 01923 859291

[www.radlettcentre.co.uk](http://www.radlettcentre.co.uk)

### JULY

#### Art Exhibition

**Ground Floor Gallery** – Radlett Art Society

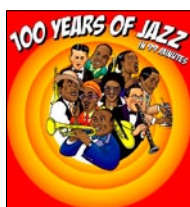
**Apthorp Gallery** – Angela Rose

**Sat 5 – 12 Radlett Art Society Annual Exhibition**

**Thur 17 – Les Misérables School Edition 7.30pm (2.30pm on Saturday 19)**

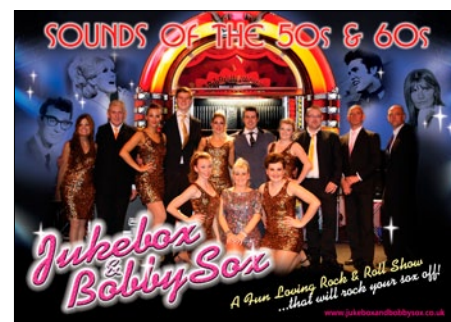
**Thur 24 Captain Calamity's Mega Party 11am, 1.30pm & 4pm**

**Mon 28 – Fri 1 Aug Musical Theatre Workshop**



**Mon 28 – Mon 11 Aug**  
Exhibition of WW1 memorabilia in the Ground Floor Gallery

100 Years of Jazz - Thursday 5 June



Jukebox & Bobbysox – Saturday 21 June at 7.30pm

### AUGUST

#### Art Exhibition

**Ground Floor Gallery** – New Image Photography

**Apthorp Gallery** – Green Our Herts

**Tue 5 Tiny Mites at the Seaside**  
11am & 2.30pm

**Thur 14 – Hugless Douglas**  
11.30am & 1.30pm



**Mon 18 – Fri 22 Musical Theatre Workshop**

**Tue 26 The Gruffalo at 1.30pm & 4.30pm**

**Wed 27 The Gruffalo at 10.30am & 1.30pm**





## Forth-Coming events

### Sunday 8 June – PLANT SALE

Visit our booth at the Radlett Festival in the Phillimore Recreation Ground and find a bargain or two for your garden or patio.

### Wednesday 25 June at 8pm – MINI FLOWER SHOW at Vision Hall, Christ Church

This is a fun event to get your horticultural year started with 13 interesting and varied classes. You can also test yourself by filling in your own judging sheet and see if you agree with our appointed 'pro' judge. The best amateur judge gets a bottle of wine. You can ask the judge questions too and tell him you disagree!

For more information please call Show Secretary Peter Breward on 01923 854564.

### Thursday 3 July – DAY TRIP

Day trip to Borde Hill Garden and Elizabethan manison, Haywards Heath, Sussex. With spectacular views across the Sussex Weald, and described as one of the country's truly great gardens. Further details from Gesine Latimer on 01923 856970.

### Sunday 13 July – GARDEN WALKABOUT

We have five very different gardens for your enjoyment between 2-5pm. The minimal charge will be £3.00 The gardens are as follows:

- 18 Homefield Road

- 2 Letchmore Road
- 45 Aldenham Avenue
- Linden House, 12 The Avenue (refreshments available)
- The Field House, 33 Loom Lane.

Members Only.

### Thursday 14 August – DAY TRIP

Day trip to The Wimpole Estate in Cambridgeshire. Within an hour's drive from Radlett, this is a National Trust working estate. Further details from Gesine Latimer on 01923 856970.

## Radlett Art Society

Radlett Art Society will be holding the 48th Annual Art Exhibition at the Radlett Centre on July 5th – 12th this year. Admission is free.

There will be over 300 paintings and 3d works, original cards, all for sale by our own artist members and many art books at greatly reduced prices.

### The John Aphorpe Award

On Saturday 5 July prizes will be awarded by an independent judge for the best, most promising paintings. Each year they will be hung in the Radlett Centre Gallery. We are most grateful to John Aphorpe CBE, our Patron, for his support of our society, promoting artistic

inspiration and encouraging member artists.

To join please contact: Membership secretary, Mytha Sayers on 020 89537030 or by email Myrna.sayers@icloud.com

Subscriptions: £24 pa  
Students under 25: £5 pa



### Welcoming new members

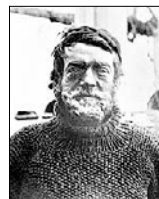
Aldenham WI welcomes new members and those just wanting to visit. Ladies are invited to make new friends, attend county events, campaign for local issues and take part in a wide variety of activities which are discussed at the meetings

WI meetings are held on the 2nd Tuesday of each month from 7.30pm – 10pm at the Aldenham Memorial Hall in Letchmore Heath.

Every month there is a talk. Past speakers have given talks on 'Helps for Heroes' and 'Reporting the news from various locations'.

### 10th June

the speaker will be talking about **Ernest Shackleton, Explorer and Hero.**



**8th July** there will be a **Mock Trial** organised by Pam Sanderson, a former Clerk to the Court at the Old Bailey.

For further information please contact Diana Mitchelmore on 01923 251436

## Stuart Nagler JP, DL receives Hertsmere's 40th Anniversary Award

Many congratulations to Stuart Nagler who received Hertsmere's 40th Anniversary Community Award for outstanding performance, dedication and voluntarily giving up his time over a forty year period, to improve the lives and circumstances of the residents of the Borough. The Mayor of Hertsmere, Councillor Paul Morris, made the presentation at the Council's Annual Civic Dinner held to commemorate 40 years of Hertsmere Borough Council.

Stuart and his wife Ros, were Mayor and Mayoress of Hertsmere in 2002/2003. Sue Pearlman, Chairman of Community Action Hertsmere paid tribute to Stuart and in particular asked it to be put on record what an excellent Mayor he had been.

The Lord Lieutenant of Hertfordshire, The

Countess of Verulam said that Stuart was a very impressive man and that the Award was completely deserved. Stuart is a Deputy Lieutenant for Hertfordshire.

Councillor Morris Bright, Leader of the Council said that the work carried out by Stuart across the Borough had made it a happier, safer, cleaner and greener place to live.

Stuart's involvement with organisations is endless – former Peace Hospice Care Chairman for seven years, magistrate for twenty seven years, Borough Councillor, involvement with CAB, Samaritans, Cub Scouts and School Governor, Domestic Violence Forum, Rotary and Community Action Hertsmere. Current activities include a Trustee of the Radlett Centre and volunteer with the Princes trust and the Police Cadets.

Stuart, who has lived in Radlett for many years, is a keen runner and has participated in numerous events, including the London Marathon raising in total over £120,000 for charities such as Cancer Research, Macmillan and Crime Stoppers.

Stuart said when he received the award 'It genuinely brought a tear to my eye, being recognised by your peers is the highest honour you can have'. He added an ode, that he has always tried to live up to, by John Wesley: *'Do all the good you can, By all the means you can, In all the ways you can, In all the places you can, At all the times you can, To all the people you can, As long as ever you can'*



Jan Adams





## St Johns School, Radlett

This year St Johns Infant and Nursery School celebrates its 50th birthday!

As part of the celebrations we are hoping to create a display of the school's history. We are appealing to anyone who may have photographs, memorabilia or special memories of the school to get in touch. Please contact Jessica Breakwell on 07766551680 or email [Jessica.breakwell@btinternet.com](mailto:Jessica.breakwell@btinternet.com).



## Radlett and District U3A

The Radlett and District U3A, formed in 2012, now has over 600 members from Radlett and the surrounding areas. It also has more than fifty Interest Groups and a host of outings, theatre visits and holiday trips planned for 2014 and beyond.

If you are over 55 years, retired or semi retired and would



THE UNIVERSITY OF THE THIRD AGE

like to know more about the R & D U3A come and visit us at our Tombola Stall at the Radlett Fayre on Sunday 8 June from 12 noon until 4.30 pm.

*Jan Adams*



## Council for Christians and Jews Concert

An exhilarating and uplifting concert was given at Radlett & Bushey Reform Synagogue (RBRS) in the evening of March 20 2014, at the invitation of the Radlett and District branch of the Council of Christians and Jews (CCJ).

Singers from St Martin's church,

Shenley, were led by Paul Findlay, and from RBRS by Alan Byers, and the RBRS "Fretz" group of guitars with singing led by Rabbi Paul Freedman.

Music harmony has to be a great way to encourage local communities to meet each other, and sing each others' music.

A wide variety of music from Christian and Jewish sources was performed to a high standard, to great enthusiasm from our 50 strong audience, who were encouraged to join in from time to time. Two items were original compositions by Alan Byers. The joint total of our singers was 22, including the three guitarists who played together. Two of our singers are also fine accompanists: Helen Shabetai and Andrew Blankfield. The Christian choir were very quick to pick up the Hebrew in some of the songs!

The prolonged interval at the concert reinforced the idea of this concert as an excellent social occasion. This is our 9th local CCJ concert since 1990. A CD was made of this event, and is available for a small charge by emailing [alanbyers00@hotmail.com](mailto:alanbyers00@hotmail.com).



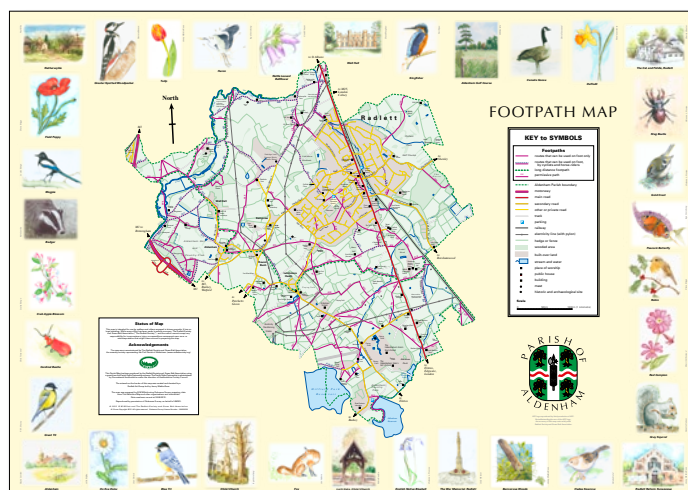
## THE RADLETT SOCIETY AND GREEN BELT ASSOCIATION

RSGBA had produced a footpath map as a display board, this is situated on Watling Street alongside Barclays Bank. The map was prepared by Bill Willett with art work around the borders by members of a Radlett Art Group led by Jenny Watkin-Rees.

There has been a lot of interest from Radlett residents. The map, with additional art work, has got descriptions of the paintings and the artists' names.

The full colour poster will be available as a poster of A2 size and will be priced at £10.00 each. They will be on sale at the Radlett Festival on the RSGBA stand.

*(Further copies can be obtained from the Aldenham Parish Council office at the Radlett Center).*





# Radlett Festival 2014

The Radlett Festival is on Sunday 8 June at Phillimore Recreation Ground from 12 noon to 4.30pm. This year is special as it is the tenth anniversary of the Festival in its current form.

Our compère this year is our own Jilly Johnson, together with special guest Paul Young. They will be running the activities on the stage and making sure everything runs smoothly.

We have a brilliant bike stunt team display from Savage Skills, who as well as giving exciting demonstrations,

The 'Savage Skills' bike team will be providing exciting demonstrations, some audience participation and cycling challenges.



will allow audience participation on the bikes and some instruction on techniques. The Guides also have a cycling challenge course, so if you or your families are keen cyclists, this is the year for you!

We have a greater focus on food this year, with stalls ranging from fish and chips, whole lamb roast and burgers, the Cheeky Indian (Indian street food) as well as crepes, a bar, ice cream, the Shaketastic bus and the tea and cakes tent. Not to mention the ever popular Hare Krishna vegetarian food.

On the entertainment front we have the St Albans City Band, the Watford Majorettes, the Singing Circle, Radlett Light Operatic Society, the Scout's climbing wall, Miss Natalie's Zumba, by popular demand the Dog Show, and the Fun Fair. A new innovation this year is the special area for toddlers and babies on "the old tennis court" (the raised area of grass by the entrance from Aldenham Avenue) where we have activities for our little ones and their Mums and Dads.



## Radlett's Town Twinning Organisation set to fold?



Radlett and Aldenham's Town Twinning organisation RAIFA may close down because it is failing to attract any new members as interest in Twinning wanes.

RAIFA was founded in 1978 to facilitate exchanges of local individuals and groups with their counterparts in their twin towns in Germany and France. Formal links between The Parish of Aldenham and Lautertal, Germany were signed in 1980 and with Louveciennes,

France in 1983.

Despite the problems there are two exchanges taking place this year. In June the Choeur de Louveciennes will be singing at the 150th anniversary celebrations at Christ Church in Radlett and in September a teenager from Radlett will represent the town at the annual Festival of Flowers in Louveciennes as a 'Maid of Honour' to the Festival Queen.

If anyone would like to find out more

about RAIFA you can visit our website at [www.raifa.org.uk](http://www.raifa.org.uk) If you would like to get involved with Town Twinning you can contact RAIFA at [info@raifa.org.uk](mailto:info@raifa.org.uk) or call Clive Glover on 01923 853483.

Clive Glover

## The Thursday Lunch Club

As many of you will know the Rendezvous Lunch Club closed its doors in April after more than 30 years providing companionship and lunch to the lonely and elderly of Radlett.

Thanks must go to Sally Hockaday, Julie Sutherland and all the others who have made the club such a great success over the years.

We are pleased to announce that the Thursday Lunch Club will open its doors on 11 September. Anne Newton will be running the Club and Judith Breward will be assisting her. Finding an alternative venue, however, has proved

difficult and we are grateful that the United Free Church has agreed to allow its facilities to continue to be used.

About half the cooks and most of the drivers and washers-up will be continuing to volunteer their services, but more help is needed. We need about 10 more cooks; no one is called upon more than every 5 weeks. Extra drivers and washers-up would also be welcome.

We really need your help and if you can, or would like to know more please contact Anne (857230) or Judith (854564)

Large & small

## Gem'll fix it

Just phone Gem on  
01727 872136  
Mobile: 07877 926130

Carpentry a speciality  
Electrics • Decorating • Plumbing  
Flat Packs • Plastering • Tiling  
Replacement Windows & Doors  
Bathrooms & Kitchens • Flooring  
- and outside work  
Full Home Maintenance  
Park Street based  
Free estimates given  
References available

Virtually all jobs





## The Visually Impaired Club



I was invited to attend the Visually Impaired Club's first birthday celebrations and AGM on Friday 23 April 2014.

This Club is primarily, but not exclusively, for blind and partially sighted people of Radlett, Elstree, Borehamwood and Shenley. The Club is run weekly on Friday afternoons, 1.30pm to 4.00pm at the Maxwell Community Centre, Maxwell Road, Borehamwood.

This being my first visit to the Club, I was extremely impressed with the wonderful programme of activities that were on offer. These included, cards, scrabble, dominoes, cake decorating, stick ball, table tennis, skittles and indoor bowls.

As well as these activities, discussions, book readings and musical activities take place.

Equally impressive was the dedication and expertise shown by the volunteers who run the weekly sessions.

This is a marvellous way for people with visual impairment to get out and make new friends in a safe and warm environment.

If you live in the Parish of Aldenham and would like to attend the Club on Friday afternoons or know of anyone who would benefit by coming along to a session, then please contact the Club's Founder, David Clout or Assistant, Sasha Capocci. They would be happy to hear from you and give you more

information about the Club should you require it. They are always looking for more volunteers especially those who can drive and would be willing to transport members to the weekly sessions.

They can be contacted in the following ways:

David Clout: 01923 854403 or email david.clout@btinternet.com

Sasha Capocci: 07771 862820 or email sashacapocci@hotmail.com

Or visit the website [www.visuallyimpairedclub.co.uk](http://www.visuallyimpairedclub.co.uk)

I should like to thank the Visually Impaired Club for giving me the opportunity to see what wonderful work they are doing in the community and I wish them lots of success for the future.

*Councillor Estelle Samuelson*



## Free Aortic Aneurysm Screening for Men

An abdominal aortic aneurysm (AAA) is a dilation (ballooning) of part of the aorta within the abdomen and usually has no symptoms unless it ruptures (bursts), when it is often fatal. An operation to repair the aneurysm may be advised if it is larger than 55mm, as above this size the risk of rupture increases significantly.

If you are a man aged over 65 years you are eligible to have a free aortic

aneurysm screen test carried out at St Albans City Hospital.

Appointments can be made up to four weeks in advance.

To make an appointment contact St Albans City Hospital on 01727 866122 and ask for the Aortic Aneurysm Screening Department. They will ask for your NHS number so have it available before you make your call.

*Councillor Gill Balen*

## For those with little or no vision – NEWS THAT TALKS



There is a local talking newspaper.

If you have a relative, friend or neighbour with limited or no sight, tell them about our FREE weekly recording.

The RADLETT, ELSTREE, BOREHAMWOOD and SHENLEY Talking Newspaper

- 30 Minutes of news from the Borehamwood Times and Watford Observer
- 30 Minutes of magazine items.

To find out about this easy to use service please contact:

David Clout 01923 854403 or Don Scott 01923 856935

## Harperbury Free School

If you wish you know more about Harperbury Free School then visit our stalls at following locations:

The Radlett Festival on Sunday 8 June and the Shenley Carnival on Sunday 22 June. We also hope to have stalls at some primary school fairs as last year.

So, do look out for us then!







# Limitless

## The Radlett Youth & Family Festival



**Saturday 2 August 12 noon –  
Phillimore Recreation Ground**

Following on from last year, Aldenham Parish Council and Affinity Sutton will be hosting Limitless Take 2.

The day will offer the community many exciting fun activities such as bungee, trampoline and go-karts, and will all be free. On the day there will also be a host of organisations offering free advice such a healthy living and career choices.



like to be one of the Sponsors of the day please contact Lucy Jackman on 01923 856 433 or [community@aldenham-pc.gov.uk](mailto:community@aldenham-pc.gov.uk).

For more information closer to the day please keep checking the website [www.aldenham-pc.gov.uk](http://www.aldenham-pc.gov.uk)



New to this year, we are pleased to announce that the Radlett Youth Council will be hosting an open air Cinema event!! So throughout the day family friendly films will be shown, and in the evening something aimed at the teenagers and older generation. So bring along a picnic and a blanket and have a fun day out in your community.

If you are interested in helping on the day in a volunteer capacity or would

## Aldenham Parish Council 'Easter Fun day'

On Saturday 5 April Phillimore Recreation Ground held the APC Easter Fun Day. The event was in aid of welcoming The Traditional Sandwich Company to the children's play area.

Children were treated to lots of free fun activities such a face painting, bouncy castles, football shoot outs and circus skills.

All ages were then entertained by a fantastic Punch and Judy show that had the audience in fits of laughter.

Aldenham Parish Council would like to thank everyone that came along and enjoyed the day.



## Radlett Rotary Fun Run

Monday 5 May marked another glorious, warm Spring day which attracted over 280 runners for the 1.5 km and 5 km, Five Fields Fun Run, held at Tabard RC and Radlett CC Sports Grounds on Bank Holiday Monday, in aid of Crohn's and Colitis UK.

A total of £2000 was raised for these two Charities together with other Rotary supported Charities.

The President of Radlett Rotary Club, Alan Bickle gave a vote of thanks to Tabard and the Cricket Club for allowing the race to be held in their



grounds, to the organisation of the event by Simon Pyzer, to the sponsorship of Nagler Simmons and to all the

event marshals. The Winner's Medal presentation ceremony was performed by Councillor Carey Keats, Deputy Mayor of Hertsmere and Councillor Neil Payne, Chairman of Aldenham Parish Council. This was followed by a BBQ, refreshments and a well earned rest!







# ALDENHAM PARISH COUNCIL

[www.aldenham-pc.gov.uk](http://www.aldenham-pc.gov.uk)

To contact a Parish Councillor go to [councillors@aldenham-pc.gov.uk](mailto:councillors@aldenham-pc.gov.uk)

## ALDENHAM EAST



### Councillor Gill Balen

Chairman of the Around Radlett Working Party  
Member of the Planning Committee  
Member of the Parks and Open Spaces Committee  
Member of the Finance and General Purposes Committee  
\*Trustee of the Gravel Allotments Trust  
\*Representative on Platt Subsidiary Foundation



### Councillor Viv Charrett

Chairman of the Planning Committee  
Member of the Community Development Committee  
Member of the Around Radlett Working party  
\*Representative on Aldenham Alms Houses



### Councillor Saleem Khawaja



### Councillor Neil Payne

Chairman of the Council  
Chairman of the Strategic Planning Committee  
Member of the Planning Committee  
Member of the Finance and General Purposes Committee  
\*Representative on the Radlett Centre Trust



### Councillor Ron Worthy

Vice Chairman of the Parks and Open Spaces Committee  
Member of the Planning Committee  
Member of the Community Development Committee  
Member of the Strategic Planning Committee  
Member of the Around Radlett Working party  
\*Representative on Platt Subsidiary Foundation

## ALDENHAM WEST



### Councillor Tony Butwick

Chairman of the Parks and Open Spaces Committee  
Member of the Community Development Committee  
Member of the Around Radlett Working Party  
Member of the Finance and General Purposes Committee  
\*Representative on the Radlett Village Institute Management Committee



### Councillor John Howley

Chairman of the Finance and General Purposes Committee  
Member of the Strategic Planning Committee  
Member of the Parks and Open Spaces Committee  
Member of the Community Development Committee  
\*Representative on Radlett Village Institute Management Committee  
\*Representative on the Radlett Centre Trust



### Councillor David Lambert

Chairman of the Gravel Allotments Trust  
Member of the Parks and Open Spaces Committee  
Member of the Planning Committee  
\*Representative on Association to Contain Elstree Aerodrome  
\*Representative on Aldenham War Memorial Hall Trust



### Councillor Estelle Samuelson

Chairman of the Community Development Committee  
Vice Chairman of the Planning Committee  
Member of the Finance and General Purposes Committee  
Member of the Around Radlett Working Party  
\*Member of the Aldenham and Bushey Community Safety Partnership



### Councillor Garry Walton

Member of the Parks and Open Spaces Committee  
Representative on the Aldenham Country Park Committee



### Councillor Chris Wilkins

Vice Chairman of the Parish Council  
Vice Chairman of the Finance and General Purposes Committee  
Member of the Parks and Open Spaces Committee  
Member of the Community Development Committee  
Member of the Strategic Planning Committee  
Member of the Around Radlett Working party  
\*Representative on RAIFA (Radlett and Aldenham International Friendship Association)

\*Members of outside organisation

## Parish Council Offices

Aldenham Parish Council, 1st Floor, The Radlett Centre  
Tel: 01923 856433/858399, Fax: 01923 852214  
Email: [manager@aldenham-pc.gov.uk](mailto:manager@aldenham-pc.gov.uk)

Office Opening Hours: 10am - 4pm Mon to Fri,  
Parish Manager: Peter Evans  
Email: [manager@aldenham-pc.gov.uk](mailto:manager@aldenham-pc.gov.uk)

All parish councillors can be contacted  
at the council office.

## Hertsmere Borough Council

Aldenham East  
Councillor John Graham  
[cllr.john.graham@hertsmere.gov.uk](mailto:cllr.john.graham@hertsmere.gov.uk)

Councillor Charles Goldstein  
[cllr.goldstein@hertsmere.gov.uk](mailto:cllr.goldstein@hertsmere.gov.uk)

Aldenham West  
Councillor Danny Griffin  
[cllr.dan.griffin@hertsmere.gov.uk](mailto:cllr.dan.griffin@hertsmere.gov.uk)

Councillor Caroline Clapper  
[carolineclapper@hertsc.gov.uk](mailto:carolineclapper@hertsc.gov.uk)

## Hertfordshire County Council

Caroline Clapper  
[carolineclapper@hertsc.gov.uk](mailto:carolineclapper@hertsc.gov.uk)

## MP for Hertsmere

James Clappison  
Email: [anna.pandoulas@parliament.uk](mailto:anna.pandoulas@parliament.uk)  
Tel: 020 7219 4152

## Forthcoming Committee Meetings June – August 2014

### June

Mon 2	Planning
Wed 4	Community development
Thur 5	Strategic Planning
Tues 10	Finance and General Purposes
Mon 16	Planning
Tues 24	Full Council
Wed 25	Parks and Open Spaces

### July

Mon 7	Planning
Mon 21	Planning
Tues 22	Full Council

### August

Mon 4	Planning
Mon 18	Planning

Minutes from the Committee meetings are uploaded to the website once they have been approved and signed by the Chairman at the following committee.

Please see all dates, agendas and minutes for Council meetings on [www.aldenham-pc.gov.uk](http://www.aldenham-pc.gov.uk)

Contact the Parish Council office for times of meetings.

### DISCLAIMER

The words written in the articles contained in this edition are the authors own. No responsibility can be accepted for errors or omissions.

All copy correct at the time of going to press. Edited and Produced by Aldenham Parish Council, The Radlett Centre, Aldenham Avenue, Radlett, WD7 8HL

[www.aldenham-pc.gov.uk](http://www.aldenham-pc.gov.uk)





# ALDENHAM PARISH COUNCIL

[www.aldenham-pc.gov.uk](http://www.aldenham-pc.gov.uk)

## Improvements in Phillimore Recreation Ground

In keeping with its commitment to tree replanting (subject to finance) this Council has recently planted fourteen new trees in Phillimore Recreation Ground. Last December, seven trees were planted in front of the depot. These are all Himalayan birch trees – a beautiful tree admired for its eye-catching, almost white, bark. This March, a *prunus sargentii* (a small tree otherwise known as the North Japanese hill cherry) was planted in the far corner of the children's play area. Also this March, six white beam (an attractive and hardy, native tree) were planted alongside the footpath which runs between the children's play area and the playing field. To further enhance this area of the Rec, three new seats have been installed adjacent to the footpath, including one funded by Hertsmere Borough Council through its

Ward Improvement Initiative Scheme.

There are wider plans to upgrade the seating throughout the Rec, which is currently a mixture of styles, with some seats nearing the end of their life. As and when seats need replacing, the Council will install one consistent style of seat – an elegant seat in dark green. Some of the money to achieve this has been generously donated from the Radlett Festival Committee, who are providing two replacement seats for the play area. Elsewhere in the Rec, a new seat is being provided for the playing field donated by a parishioner in memory of her husband, a long term resident of Radlett.

The Council currently has no formal scheme for the donation of memorial seats. However, if any parishioner is interested in donating a seat, please



contact the Parks and Open Spaces Officer on 01923 856433 for further details.

*Claire Fletcher*

## Dog walkers are they a problem or an opportunity?

Recently there has been much publicity about the problems that are perceived to be caused by dog walkers in the community. These range from the obvious problem of dog fouling to the aggression that causes anxiety in some innocent bystanders and their right to peaceful use of the community facilities. We have noticed a growing problem in Phillimore Recreation Ground where regularly groups of dogs and their walkers are allowed to roam free in the park scaring some children and even some adults in the nearby playground.

Let me be clear I have every sympathy with dog walkers who are sensible and responsible members of the community but their reputation is spoilt by a few uncaring and anti-social walkers who do not take care of their dogs properly. Dog fouling is not only unpleasant it can be dangerous as it can lead to Toxocariasis infection which can last for 6 to 24 months in the ground and is particularly dangerous to under 5's. It is an offence not to clean up after your dog and you can be issued with a fixed penalty or even a court fine.

However there are 7 million dogs in the UK and these are cared for and cherished by many devoted owners who accept their responsibilities. I would like to suggest a solution to deal with the maverick owners at grass root levels. There are groups countrywide that have found a solution which helps both the dog walker and the community. They have formed "Green Dog Walker" groups who identify themselves with green bands on their arms and a green dog collar on their dogs to promote certain very sensible and effective measures:

1. To clean up after their dog
2. Wear GDW (Green Dog Walkers) armbands and GDW dog collars on their dogs
3. Carry extra dog waste bags and be happy to give these to other dog walkers
4. To be in control of their dogs at all times
5. To remind other dog walkers of their responsibilities if necessary and encourage them to join the GDW group.

This could become a local Green Project and I would like to know if there are any likeminded Dog walkers who would like to help and join in a scheme for Aldenham which could solve so many of the problems which have recently surfaced and also encourage people to accept their responsibilities and make sure they are not classed with those who do not care for the pets properly.

*Councillor Tony Butwick*

### Aldenham Parish Council would like to congratulate Hazel Ward on winning the Volunteer of the Year award 2014.



The award was presented to Hazel at the Annual Parish Meeting. Hazel has spent much of her life looking after the elderly and being a friend to all that needed her. Hazel is very active in Battlers Green and looks after the best interest of all 'her ladies' doing their shopping for them or getting them their prescriptions. Hazel is a true inspiration.





# ALDENHAM PARISH COUNCIL

[www.aldenham-pc.gov.uk](http://www.aldenham-pc.gov.uk)

## Refreshment Kiosk (Phillimore Recreation Ground)

Aldenhams Parish Council is delighted to inform you that 'The Traditional Sandwich Company' is now open for business at Phillimore Recreation Ground (off Gills Hill) in Radlett.

After many requests from the local community to have somewhere in the Rec. to purchase food and drink, we are now pleased to be able to offer this facility. The refreshment kiosk is situated at the top end of the children's play area near to the car park. This is a family run business serving freshly made sandwiches, soups, cakes, biscuits, ice lollies, hot and cold drinks as well as many other items on the menu. Children are also well catered for. Colourful chairs and tables will be dotted in front of the kiosk for patrons to sit to eat their food



and drink while enjoying the sunshine!

The refreshment kiosk will be open, weather permitting, every Friday,

Saturday and Sunday during the summer and on some additional days during the week and school holidays. To find out about opening times, please check on the Radlett Village Facebook page or will be displayed on the refreshment kiosk itself..

We very much hope that visitors to the Phillimore Recreation Ground will take advantage of this service and spread the word about the refreshment kiosk to their family and friends.

Please be aware that there are ladies, gents and disabled toilet facilities in the old Pavilion that can be accessed to the rear of the building. These will be open throughout the summer months.

*Councillor Estelle Samuelson*



**Radlett Youth Council are currently looking into the possibilities of a bus to run from Radlett to an underground station.**

**They are inviting residents of Radlett to take part in a survey which can be found on the APC website [www.aldenham-pc.gov.uk](http://www.aldenham-pc.gov.uk) or by filling out a survey in the Council offices.**

**To find out more about this or to join the Youth Council please contact Lucy Jackman on 01923 856433 or email [community@aldenham-pc.gov.uk](mailto:community@aldenham-pc.gov.uk)**

## The Café in the Park (Watling Street)

The Café in the Park, which is currently being built on the site of the old toilet block next to Barclays Bank in Radlett, is nearing completion. It is an initiative of Hertmere Borough Council and will operate on land owned largely by the Borough Council. HBC views the project as one which will replace what

has become an eyesore and which will provide a valuable addition to Radlett's facilities and a useful return on the capital invested; such return will contribute towards the funds HBC needs to finance the services it provides for its residents.

*Councillor Chris Wilkins*

## Aldenhams Parish and World War One

A group of local historians and Parish Councillors is planning to produce a special supplement for the Autumn edition of Around Radlett. The supplement will contain photographs and articles covering life in the parish at that time and some of the contributions of local residents. In addition an exhibition of local WW1 photographs will be displayed in the foyer of the Radlett Centre from the 28th July to the 8th August. Photographs and memorabilia will also be displayed at the Harpenden Building Society branch in Radlett. We would welcome contributions from local residents. If you have anything



to offer, please contact Lucy Jackman on 01923856433 or [community@aldenham-pc.gov.uk](mailto:community@aldenham-pc.gov.uk)

*Councillor Chris Wilkins*





The Three Compasses Pub in Aldenham became The Black Swan in the film '633 Squadron'



MGMs 1959 production of 'Village of the Damned' took over virtually all of Letchmore Heath.



## Elstree Studios celebrates 100 Years of Film Making

**This year commemorates Elstree Studios' 100 years of making countless films and television shows.**

Elstree Studios together with their

neighbours Metro Goldwyn Meyer (MGM) and Associated Television (ATV) are at the heart of film and TV making in Hertfordshire. Film crews wishing to film near their studios have plenty of sites to

## The Parish of Aldenham – a popular location for film-making and television production

In 1914 a couple of film pioneers set out on the 'Bedpan' railway line (as the Bedford to St Pancras line was known locally) to look for a site for a silent film studio free of the London smog and with a variety of filming locations nearby. Had they stayed on the train for just one more stop from London then Radlett might have become "the Hollywood of England".

Instead, they got off at Elstree and Borehamwood, like Aldenham and Radlett a very rural community 100 years ago. In those days land could be purchased in Borehamwood for under £100 an acre! It is amazing to think that when Tesco purchased part of the Elstree Studio site 75 years later it paid £1.5 million an acre.

Those early film pioneers set up Neptune Studios, the first 'dark stage' in Europe, on the site which the BBC Elstree Centre now occupies. Until then, basic film studios such as the one at Bushey were built with glass roofs for filming in natural light; rather than rely on the whims of nature, Neptune introduced its own electricity supply.

Just over 10 years later, more filmmakers purchased 40 acres of land on the other side of Shenley Road and created what eventually became Elstree Studios. In subsequent years another four studios sprang up in the parish of Elstree, including the massive 115 acre MGM British Studios just off Elstree Way.

It was natural for film companies to want to shoot on locations as close as possible to the studios, and Aldenham Parish soon became a prime target.

From the 1950s into the 1970s many productions used the varied locations available just a few miles from the studios of Borehamwood.

The railway station at Radlett was taken over for a scene in the Dirk Bogarde wartime escape thriller called 'The Password Is Courage'. This required the production unit to 'dress' the station as if it was part of Occupied Europe, complete with German troops and Nazi flags. The Production Manager recalled filming was interrupted when an elderly Lady from Radlett entered the station, oblivious to the wartime scene, and insisted on buying her ticket to London!

The station has since appeared in a number of productions including an episode of the 1968 TV series 'Journey To The Unknown' starring Stephanie Powers and one of the 'Confessions Of...' films starring Robin Askwith.

The Three Compasses pub near Letchmore Heath featured in exterior shots for the classic 1960s war film '633

choose from in Radlett and surrounding areas.

Here we look at past locations used with contributions from 'A Popular Film Location' by Elstree Screen Heritage, 'A Clockwork Orange' (partly filmed in Radlett) and the life of Ronald Neame, a camera man and director who lived in Radlett.

'Squadron' starring Oscar winner Cliff Robertson, while the Haberdashers' Aske's Schools have appeared in several productions including the 1950s movie 'It's Great To Be Young' starring John Mills.

Bhaktivedanta Manor appeared in 1960s and 1970s TV series like 'Randall And Hopkirk (Deceased)' and 'Dept S', with Peter Wyngarde.

Letchmore Heath has often proved popular with motion picture companies and thankfully has remained virtually unchanged over the years. In 1959 MGM virtually took over the village for location shots in what is now a classic science fiction thriller film, 'Village of the Damned' starring George Sanders and Barbara Shelley. In those days a feature film could be made for under £100,000 yet still be good entertainment.

Watch the film today and you will easily recognise the village green, the Three Horseshoes pub and other locations including the interior of the village hall, used for the inquest scenes. In the late 1970s I recall visiting the same hall for a scene being shot for the film 'The Shillingbury Blowers' about a brass band starring Trevor Howard.

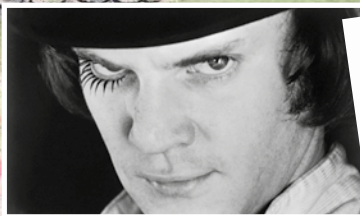
Letchmore Heath also featured in episodes of 'The Avengers', (cont. over)







The Avengers' John Steed and Emma Peel cross the bridge at Tykes Water in the episode 'The Hour That Never Was'.



'The Saint', 'The Champions' and other classic TV series of the 1960s. Much more recently David Mitchell and Robert Webb shared TV screens with Letchmore Heath in an episode of 'Peep Show'. Not far away in Aldenham is Tykes Water and the bridge there has been a popular film location since the 1950s.

This scene is from 'Randall and Hopkirk (Deceased)' but TV fans probably remember the bridge best from the opening credits of the cult TV series 'The Avengers' with Linda Thorson opposite urbane bowler-hatted Patrick MacNee.

On occasions the stars themselves chose to reside in Radlett, including famous Ealing comedy actor Cecil Parker and more recently 'EastEnders' star Pam St Clement.

The area of Parish of Aldenham was clearly destined to be a favourite location for film productions from the nearby studios of Elstree and Borehamwood.

If you have recollections of movie or TV-making in the area we would love to hear from you at our website at [www.ElstreeScreenHeritage.org](http://www.ElstreeScreenHeritage.org) or our Facebook page.

**Paul Welsh MBE MA**  
Chair, Elstree Screen Heritage

For further details please contact Elstree Screen Heritage care of [bob.redman@btinternet.com](mailto:bob.redman@btinternet.com) or simply leave us a 'phone message at 020 8953 2903.

Why not visit the Elstree Studios 'Celebrating 100 Years' at their stall at the Radlett Festival on Sunday 8 June 2014, 12 noon to 4.30pm.



'A Clockwork Orange', Stanley Kubrick's futuristic and controversial film was filmed partly in Radlett.

There are two interesting sides to this story, firstly, the location and secondly, the two architects who designed the house have gone on to design iconic buildings all over the world.

In the mid 70's, a couple who at the time lived in Elstree, Tony and Shirley Jaffe, bought a plot of land in Radlett and asked an architect friend to design a house for them. However, that friend had other commitments but recommended they approach two young architects who had recently graduated, Norman Foster and Richard Rogers. At the time they worked under the company name of Team 4, the name being applicable as both their wives were part of the company.

Such was the architectural phenomenon of the Foster and Roger design that it was featured in several architectural magazines. The house was brought to the attention of film director and producer Stanley Kubrick. At the time he had written the screenplay (adapted from Anthony Burgess's 1962 novel) for his film A Clockwork Orange and was looking for a house that was as futuristic as the film itself. He approached the Jaffe's, made an appointment to view



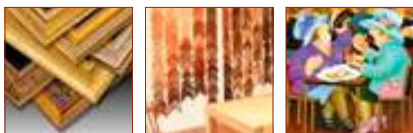
A room in the Jaffe's house (above), designed by Sir Norman Foster and Lord Richard Rogers in a scene from the film 'A Clockwork Orange' (top).

the house and within a short space of time filming began. The part of the film made at the Jaffe's house took just over two months but overall A Clockwork Orange is said to have been 'the quickest film shoot of Kubrick's career'.

Shirley Jaffe recalls moving the family out of their home in Radlett to Sopwell House Hotel, St Albans while the film crew, hairdressers, makeup artists, mobile food vans and all the paraphernalia associated with film making moved in. They took over the garden and the house. All that remained was the family's pet Labrador called Amos, who was considered too old for hotel life. Shirley who is an actress herself, had a part in the film as Nurse Hypo, was under no illusion as to what to expect when a film crew took over her home. However, the family thoroughly enjoyed their time at Sopwell and were wine and dined in style, before an evening meal, a toast would be made "to Stanley Kubrick long may he film"!

**Jan Adams (with advice from Tony and Shirley Jaffe)**

## Bespoke Framing Service



### Leading Art

105 Victoria Street  
St. Albans AL1 3TJ

Call Jean Dennis

**Tel: 01727 834 391**

### SERVICED OFFICES AVAILABLE IN RADLETT VILLAGE



#### We provide:

- Fully serviced self contained office suites both short and long term licences.
- Consulting room available half or full day basis.
- Onsite parking and visitor parking.
- Close to Radlett station.

**t: 0845 872 4949 e: [info@thecornworks.co.uk](mailto:info@thecornworks.co.uk)**

Call in and see us at:

The Corn Works, Station Road,  
Radlett, Hertfordshire, WD7 8JY

[www.thecornworks.co.uk](http://www.thecornworks.co.uk)

### RADLETT LAWN TENNIS AND SQUASH CLUB



425 Watling Street, Radlett, Herts, WD7 7JG

**WELCOMES PLAYERS  
ALL AGES AND ABILITIES**

#### Membership Enquiries

[admin@rltsc.co.uk](mailto:admin@rltsc.co.uk)  
01923 854523  
[www.rltsc.com](http://www.rltsc.com)

**4 Glass Back Squash Courts  
11 Tennis Courts (6 Floodlit)**

Club, District and County Leagues  
Social Tennis & Squash  
Coaching for all Abilities

Friendly Bar  
Social Functions  
Club Tournaments

The Radlett Lawn Tennis and Squash Club, Registered Charity No. 1117605



## Ronnie Neame (1911-2010)

One of our longest lived members of the film industry started his working life at Elstree Film Studios, his name was Ronald Neame – Ronnie to all that knew him. He lived with his wife Beryl, in The Rose Walk, Radlett from 1936 to 1942.

Ronnie's father, Elwin Neame, was a portrait photographer and his mother was the actress Ivy Close, Miss World 1908.

The first film Ronnie worked on as an assistant camera man was *'Blackmail'*, the first British talkie that was directed by a very young Alfred Hitchcock.

He also worked on many films with Claude Friese Green where he improved his camera techniques and introduced many of the camera working practices that are still in use today.

Whilst at Elstree Ronnie worked on many films with overseas locations.

During 1934 Claude Friese Green collapsed whilst making *'Drake of England'* and Ronnie had to take on the added responsibilities of lighting camera man and finishing the shooting

of the film.

In February 1936 the studios caught fire and Ronnie managed to capture the fire and fire service response on film. This footage is in the Elstree Archives.

Ronnie left Elstree and went to work for the British offshoot of 20th Century Fox (Fox British). He worked on *'quota quickies'* which were as a result of an Act of Parliament which made it mandatory that 20% of all films shown in England had to be made by British Companies using British talent.

By now Ronnie had married Beryl Heanly but they delayed their honeymoon for a few years and eventually this took place in 1938 where they took a motoring holiday to the South of France and were able to cover the cost by winning at the tables in Monte Carlo and, of course, the honeymoon trip was captured on black and white cine film.

Ronnie now went to work at Pinewood where he made numerous films as Director of Photography working with people such as Michael Balcon, Gabriel Pascal and others.

When war broke out Ronnie was asked to make War Propaganda films, arguably the most famous being *'In Which We Serve'* where he worked in the company of David Lean, Anthony Havelock Allen and Noel Coward. These four formed a Production Company called 'Cineguild' at the end of the war which made *'Blithe Spirit'*, *'Oliver Twist'*, *'Great Expectations'*, *'David Copperfield'*, *'This Happy Breed'* and *'Brief Encounter'*.

Also at this time Ronnie was instrumental in getting the British company 'Newall' to make cameras as good as the state of the art American ones. He had been sent to the USA by J. Arthur Rank to establish the current American filming techniques.

In 1946 Ronnie became a founding member of the British Film Academy which eventually became BAFTA and was its Chairman in 1948.

For the 1951 Festival of Britain Ronnie produced *'The Magic Box'* about the life of the movie camera inventor William Friese Green (father of Claude above).



His directorial debut was made under the 'Cineguild' banner with *'Take My Life'* which was released through J. Arthur Rank's General Film Distributors.

He realised that directing films was his forte and for the next thirty-five years he directed.

He worked with Alec Guinness (whom he had worked with on *'Great Expectations'* and *'Oliver Twist'*), this time as director, in three films: *'The Card'*, *'The Horse's Mouth'* and *'Tunes of Glory'*. He described the latter as "the film I am proudest of" and received two BAFTA Award nominations. In 1970 they worked together again in *'Scrooge'*, a musical, (1970) with Guinness playing the ghost of Jacob Marley to Albert Finney's Ebenezer Scrooge.

Ronnie also directed *'I Could Go On Singing'* – Judy Garland's last film, co-starring Dirk Bogarde; and *'The Prime of Miss Jean Brodie'* which won Maggie Smith her first Oscar.

In 1972 he was recruited to direct *'The Poseidon Adventure'*. He later characterised this film as his favourite because it earned him enough to retire comfortably.

He enjoyed a long friendship with Walter Matthau, who he directed in two later films, *'Hopscotch'* and *'First Monday in October'*.

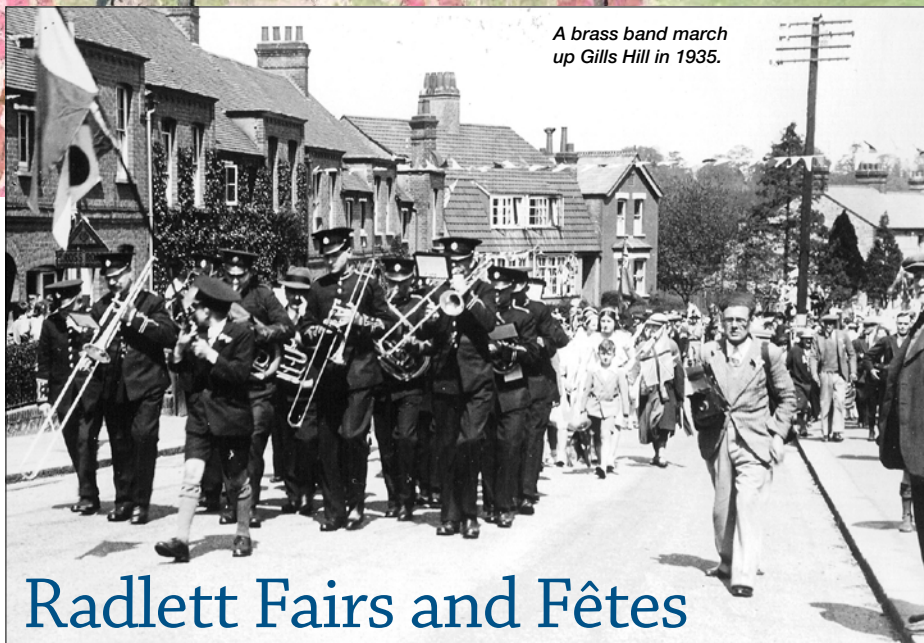
His final feature-length film, *'Foreign Body'*, a comedy starring Victor Banerjee, was filmed in England and released in 1986 (working on this film also were his son Christopher and his grandson Gareth).

Personal life: Ronnie was appointed a Commander of the Order of the British Empire (CBE) and awarded a BAFTA Fellowship for his contributions to the film industry. He had homes in Beverly Hills and Santa Barbara, California. In 2003, his autobiography *'Straight from the Horse's Mouth'* was published.

Martin Jeans







A brass band march  
up Gills Hill in 1935.



This tradition continued over the years with special events being held for specific purposes. In 1927 a huge fair was held in the grounds of Newberries Mansion to raise funds for the proposed Village Institute. It was rumoured that 10,000 people attended.

In 1937 Miles Brunton bought land in Cobden Hill from Lucy Phillimore which became the home of the Radlett Cricket Club. The History of the Club states that there was a fair in 1938 which paid for the pavilion, but they give no detail of where it was held or what it was like.

The Whit Monday fairs were a regular feature, as were fairs on Jubilee days and at the time of the Coronation. It seems that Radlett would put on a fair at the drop of an excuse.

Bringing us up to date, in recent history the responsibility for the annual Summer Fair was in the hands of the Radlett Round Table who for many years presented a well attended and popular event on the Phillimore Recreation Ground. At one time an important part of the day was the procession of decorated floats from Newberries Car park to the Rec via Watling Street and Gills Hill. In it's hey day, both sides of Watling Street were lined by hundreds of people waving and cheering for the ingenuity and enterprise of the scores of entrants.

Gills Hill, too, would be thronged with people watching the procession. A prize was awarded for the best decorated float which was usually won by one of the young people's organisations – cubs, girl guides, Sunday School etc., – and quite rightly. Although the processions have gone – people today unfortunately no longer have the time or the money to prepare them – the tradition of the Summer Fair at The Rec continues, thanks to the efforts of the Festival Committee, now providing entertainment each year to as many as 5,000 people of a (hopefully) sunny day in June.

[philip.eastburn@mail.com](mailto:philip.eastburn@mail.com)

Fun, Fêtes, Fairs and Festivals have been a feature of Radlett life for a very long time. The earliest recorded event was a Horticultural Society Flower Show on August Bank Holiday Monday in 1901 at Aldenham Cottage, Letchmore Heath (now the Grocery Institute headquarters) where the Watford Town Band played for the enjoyment of the competitors and visitors.

Over the next few years other attractions were added. In 1904 the Northampton Military Band played during the afternoon and performed a concert in the evening, the event being held in the field behind the old Parish Hall - now The Grove. In 1906 at Newberries sports were added, with races for children, the Fire Brigade engaged in competitions and drills, there was a Tug-of-War and an evening concert by a brass band, and in 1912 the organisers introduced a parade of Cart Horses, decorated by local businesses.

The 1913 Show, held again in the grounds of Newberries Mansion, saw the introduction of roundabouts and

swings as well as the customary music from the Northampton Military Band, together with Boy Pipers from the Royal Caledonian Asylum (later the Royal Caledonian School, now the Purcell School).

All these events were arranged by the Radlett, Aldenham and Letchmore Heath Horticultural Society, an enterprising and energetic group. Mr Miller, owner of Newberries, was an accommodating local benefactor. As well as hosting the Horticultural Society Flower Show on August Bank Holiday Monday in 1906 he also opened his grounds for a fair the previous month at which the St Albans Silver Band played. Games and sports were enjoyed and a light supper was served at 7.15 followed by dancing until 10.45.

On Whit Monday in 1910 there was a Fête on Mr Smith's field (now The Ridgeway/Homefield Road) with a whole host of activities for everybody including (separate) races for veterans, elderly ladies and young men, Maypole Dancing, a baby show, Morris Dancing and a dog show. Special attention was paid to a Decorated Bicycle Competition for the youngsters and a Horse and Cart competition in which the beauty and care of grooming of the animals was paramount. The newly formed (in 1908) Radlett Band played for the pleasure of those attending.



The Radlett Players in 1984.



# Christ Church's 150th Anniversary Celebrations

## PROGRAMME OF EVENTS



### Christ Church

<b>1 June</b>	Rev'd Canon David Ridgeway	<b>22 June</b>	Rev'd Jim Smith
<b>8 June</b>	Rev'd Canon Gordon Manley	<b>Wed 2 July</b>	Rev'd Canon Christopher Newton
<b>15 June</b>	The Ven Malcolm Lesiter		
"	Rev'd Julia Boothby		

**Sun 26 October**  
Rev'ds William and Annie Hogg

### Saturday 28 June

**Vision Hall** Display of photos and memorabilia since 1864 (until 6 July).

**Christ Church Field** Classic Car Show including BBMF flypast, 4 String Ukele Band, charity stalls etc.

**Christ Church** Celebrity switch-on of exterior floodlighting.

**Christ Church** Radlett Choral Society's 60th Anniversary Concert including choir from the French twin-town of Louveciennes.



### Sunday 29 June

**Christ Church** Young person's special presentation to celebrate the Anniversary.

### Monday 30 June

**Christ Church** Evening concert featuring local junior school choirs.

### Wednesday 2 July

**Christ Church** Variety concert including the award winning Amersham A Cappella Choir, Radlett Light Opera, Phoenix Concert Band, Roy Willox and friends jazz ensemble, organ solo by former resident Giles Turner, Nigel Rogers and other local artistes.

### Friday 4 July

**Christ Church** Flower Festival interpreting the theme "Let's celebrate!" (until 6 July).

### Saturday 5 July

**Vision Hall** Celebration Dinner under the direction of TV Master Chef finalist Amanda Burningham (nee Barrett) – with surprises!

### Sunday 6 July

**Christ Church** Thanksgiving Service led by the Bishop of St. Albans. Parishoners' presentation to Christ Church.

**Christ Church Field** Lunchtime and afternoon picnic with entertainment from the Borehamwood Brass Band.

Timings, ticket availability/prices (where applicable) and further details will be published on notice boards and separate flyers, as required, nearer the time. Refreshments will be offered at most events.

Further information available from the organising committee including Brian Davis, Adrian Morrish and Margaret Price (contact: bwd.astra@ukgateway.net)

Registered Charity No. 1132088

## Aldenham and Bushey Community Safety Partnership (CSP)



HERTSMERE COMMUNITY  
SAFETY PARTNERSHIP

The next meeting of the Community Safety Partnership which covers the areas of Radlett, Aldenham, Letchmore Heath, Roundbush, Bushey and Bushey Heath will take place at Queens School, Aldenham Road, Bushey WD23 2TY on Monday 30 June 2014 at 7.00pm

This is an opportunity for residents to come along and talk to the local Hertfordshire Police Constabulary, Fire and Rescue Services, Hertsmere Crime Prevention Officers and Councillor's about any problems that they are facing with regard to crime and safety in the area that they live in.

The meeting that took place at

Newberries School in Radlett on Monday 24 March 2014 was very well attended and it was particularly good to see so many Radlett residents there. Some of the issues that were discussed were crime statistics, operation scorpion, theft from cars, vehicle obstruction, policing private roads and safer parking initiatives around schools.

It was agreed that the meeting venues would alternate between Radlett and Bushey.

Please try and make an effort to attend these worthwhile Community Safety Partnership meetings. It is your chance to listen to the reports, take part in the



discussions and help continue to make the Parish of Aldenham a safe place to live.

*Councillor Estelle Samuelson*

### The next meetings are :

- Monday 30 June 2014 at 7pm at Queens School, Aldenham Road, Bushey, WD23 2TY.
- Monday 29 September at 7pm at Newberries School, Newberries Avenue, WD7 7EL



## STUART THORNE

Bespoke Hand Tailored Suits  
of the Highest Quality



Ladies and Gents Alterations by Expert Tailors

22-24 Aldenham Road, Radlett,  
Hertfordshire WD7 8AX

**01923 857502**

## Safe and happy at Tomten Kennels, Cattery and Grooming Salon



Take the worry out of holiday arrangements by ensuring  
that your pets are in safe, professional hands.

15 London Road, Shenley  
www.tomten.co.uk Tel. 01923 856264

## The Oakridge Practice Footcare Clinic

HPC registered Podiatrist / Chiropodist  
01923 839 796

www.oakridgepractice.com

244, Radlett Road, Colney Street,  
St Albans, AL2 2EN

## NETHERCOTT

INDEPENDENT FAMILY FUNERAL  
DIRECTORS & MONUMENTAL MASONS  
OF DISTINCTION SINCE 1911

20 ALDENHAM ROAD,  
RADLETT WD7 8AX  
TEL: 01923 852899

98 SHENLEY ROAD,  
BOREHAMWOOD WD6  
TEL: 020 8953 9555



*Taste The Difference*

Contemporary Indian Takeaway

Free Home Delivery on orders over £12.00  
Tel: 01923 855355

Winner British Curry Award 'Chef of the Year'

Opening Hours: 5.00pm - 11.00pm -  
Open 7 Days a week

6 Battlers Green Drive,  
Radlett, Herts WD78NF

www.aromatakeaway.com



Independent Financial Advisers

44 Watling Street, Radlett,  
Herts WD7 7NN  
www.tjal.co.uk

Tremellen Jeffrey Allan Limited (TJA) is an  
independent firm of financial advisers, established  
in the 1930's and based in Radlett.

The services TJA provide:

- Retirement Planning
- Investments
- Equity Release
- Mortgages

For a free initial consultation, without obligation  
please contact us.

Tel: 01923 333199 Email: info@tjal.co.uk

## JB TV SERVICES

EST 1960

REPAIRER OF  
LCD/PLASMA/TV/VIDEO/AUDIO/DVD



SONY  
JVC  
Panasonic

- REPAIRS TO ALL MAKES & MODELS
- AUTHORISED REPAIRERS OF  
SONY, JVC, PANASONIC

TV/VIDEO/DIGITAL/TUNING/FREEVIEW  
INSTALLATION & SET UP  
TEL: 07961 420 535

## OVER 40 YEARS IN RADLETT

• DOMESTIC • COMMERCIAL

## WRENS ELECTRICAL LTD



COMPLETE REWIRES & ALL  
ASPECTS OF ELECTRICAL  
WORK UNDERTAKEN

- Lighting • Heating • Distribution Boards • Sockets • Inspection •
- Fault Finding • Electrical reports • LED • Fuse Boxes • PA testing •
- Part P regs • Oven repairs • T.V. • Immersion Heaters •
- 3-phase Installations • Cat 5/6 cabling • NICEIC test and inspect

**RADLETT 01923 854907**

email: martin.wren@sky.com

1 Aldenham Road Radlett WD7 8AU

## Why live with pain?

Treatments available include:

Sports injuries, Nerve/Sciatica Problems, Neck & Shoulder Pain,  
Tennis Elbow, Frozen Shoulder, Hip & Groin Pain, Back Pain,  
Arthritic Pains & Rheumatism, Wiplash & Cranial Osteopathy,  
Pregnancy Aches & Pains.

**Radlett**  
Osteopathic Clinic

Maria Matthews

New Road, Radlett WD7 8LX  
tel: 01923 852259  
web: www.radlettosteopathy.co.uk



## Ken Hodson

Local Computer Hardware & Software Repairs  
Upgrades and Advice for Home and Business

Ken Hodson Computer Services Ltd.

115 Tassell Hall, Redbourn, Herts. AL3 7JE

T: 01582 794723 M: 07974 156743

Email: enquires@kenhodsoncomputerservices.co.uk

www.kenhodsoncomputerservices.co.uk

- No fix, no fee for all repairs - you have nothing to lose.
- Low hourly rate.
- Most repairs carried out in your home, if not the computer will be picked up and delivered back to you.
- Upgrades of hardware and software.
- Friendly training and instruction available in plain English.
- Problems with Windows / Applications / Games / Internet / networks fixed.
- Advice given on upgrades - many older computers can be upgraded at a fraction of the cost of a new machine.



## INDEPENDENT, BESPOKE VETERINARY CARE



Ample Parking, Friendly Staff, Dog and Cat Waiting Rooms  
Free New Kitten/Puppy Checks, Dental Checks and Weight Clinics

Modern Facilities in  
a Traditional Setting

@ The Red Cow, 107 Radlett Road, Frogmore,  
Herts AL2 2LA www.halianvet.co.uk 01727 874700



### CARPENTRY

KITCHENS & BATHROOMS  
FITTED WARDROBES  
CUSTOM MADE CABINETS  
DOORS SUPPLIED & FITTED

### FOR DECORATING

INTERIOR & EXTERIOR  
SPECIALIST PAINT EFFECTS  
WALLPAPER HANGING

WORKING IN RADLETT FOR  
OVER 15 YEARS

EXPERIENCED TRADESMAN  
REFERENCES AVAILABLE ON REQUEST  
FOR A FREE QUOTATION & DESIGN ADVICE

CALL DAN on

**07808 401678 or 01727 825691**

Email: dacmaintenance@btinternet.com



Please recycle  
responsibly

Paper used is from  
well-managed/sustainably  
managed forests



Designed and Printed by Caprin Printers

Unit 2, Park Industrial Estate, Frogmore, St. Albans, Herts, AL2 2DR.

T: 01727 872 021 W: www.caprin.co.uk