



Around Radlett

SUMMER 2017

114

The Newsletter of Aldenham Parish Council • www.aldenham-pc.gov.uk



'Aldenham' by Gayna Lawson

'Aldenham' by Gayna Lawton

The Around Radlett team would like to thank local artist Gayna Lawton for allowing it to use her painting of 'Aldenham' on the front cover of this edition. In the background of the painting is the Grade 1 listed St John the Baptist Church, Aldenham, which celebrates its 750th year anniversary during the weekend of 23, 24 and 25 June 2017.



Around Radlett would be very grateful to receive any paintings or photographs of local scenes.

Please contact
community@aldenham-pc.gov.uk.



Councillor
Neil Payne

Chairman's Message

Spring has seen an abundance of daffodils in bloom. Particularly welcome are those in Aldenham Green, Letchmore Heath and the Phillimore Recreation Ground ('the Rec') due to the kind efforts of volunteers on **Mitzvah Days** over the last three years. The last few weeks have seen the arrival of the colourful hanging baskets in the high street. Our thanks go to the Council's groundstaff for their work in putting on such a wonderful display.

The **Annual Parish Meeting** on 13 March was dominated by those who wanted to express objections to the development in Newberries car park proposed by Hertsmere Borough Council (HBC). Unfortunately, the large number of people who wanted to comment on the proposal, compounded by the bad behaviour of a minority of those present, meant that it was not possible to satisfy the desire of some residents to ask questions about the activities of Aldenham Parish Council (APC). It was also a shame that the presentation on "*Planning for Growth*" by Christine Lyons and Mark Silverman from HBC was not given the quiet reception that common courtesy requires, particularly as APC believes that the issue to be of importance to residents in view of its potential impact on the Parish.

APC welcomes the announcement by HBC in March that the latter needed to put the proposed plans for Newberries Car Park on hold. This will allow the focus to move away from opposition to a particular

scheme and help HBC to come together with the residents to work out what sort of project might be acceptable to all concerned. With this in mind, HBC is forming a Newberries Car Park Development Group, comprising Borough Councillors and senior officers, with representatives from Radlett and other interested parties. APC looks forward to being actively involved in the process.

The **Neighbourhood Plan Steering Group**, assisted by its consultant, approved in April a draft of the Plan, which has been submitted to HBC for formal comments. Please see the insert for further information.

Earlier in the year, the **new toilets in the Rec** were subjected to vandalism resulting in extensive internal damage, putting the toilets out of order for many weeks. The necessary repairs and enhancements have been carried out, and the toilets are open again.

Work on the Allotments, including the car park, was carried out at the start of the year. However, unfortunately, HBC has raised concerns regarding the change of material used for the access road and car park, as well as the excess soil that has been built up around some of the tree trunks in Fir Spring Wood. Discussions are taking place with HBC in order to resolve the problems.

The possible development of the open area of **Scrubbitts Wood** for an affordable housing scheme of 8 flats met with local opposition. As a result of the efforts of some of the opponents of the scheme, a copy of an Indenture between the APC and Phillimore Estate, which had gifted the area to APC in 1909, was identified. The existence of the Indenture was not known to APC,

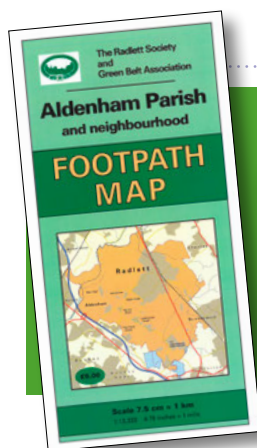
as the original deeds were destroyed (possibly in a fire) many years previously. The document has ramifications for the existing buildings in the wood, namely the Scout Hut, Guide Hut and Radlett Horticultural Society shed, which are currently being clarified with the Phillimore Estate.

Both APC and HBC have given permission for a **telecommunications mast** to be installed in the corner of Radlett Gardens, next to Tykeswater and the railway. This should help to improve mobile phone reception in the village, which has been poor for some time for certain users. Installation should commence in July. APC has identified Radlett Gardens to be retained as a "*green lung of the village*". However, it is felt that the Gardens need a makeover, and residents will be consulted on how best this might be achieved (see page 12).

HBC has commenced the process of formal consultation, as part of its review of the **Controlled Parking Zones** in Radlett. APC has raised concerns with HBC regarding the extent of the initial or "*soft*" consultation carried out in relation to some of the zones.

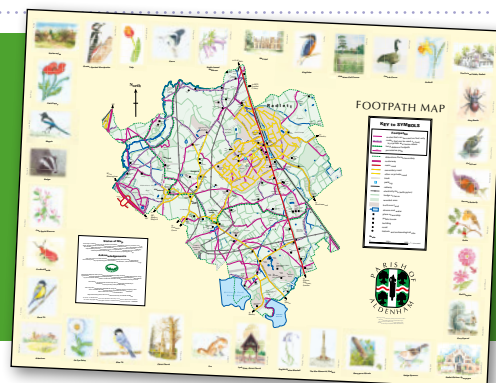
I was pleased to attend the **Rotary Fun Run**, which took place on 1 May, around the Radlett Cricket Club ground and the King George V playing fields. A large turnout, ranging from young to old, enjoyed the event. Fortunately, the rain held off until the last few competitors were finishing the course! My congratulations to Rotary for organising this enjoyable event.

Councillor Neil Payne
Chairman
Aldenham Parish Council



Corrections to 'It's Spring Time', Around Radlett #113

On page 13, '*It's Spring Time*', the wording and the maps featured did not 'match up'. There are two maps available from the Parish Council offices – **Aldenham Parish and Neighbourhood Footpath Map** (left) priced at £6, and a 80cm x 60cm **Footpath poster** (right) priced at £10.



Addendum to 'Letchmore Heath', Around Radlett #113

Several readers pointed out that our article on Letchmore Heath, page 12, was incorrect by saying that the **Bricklayers Arms Public House** was "situated on the corner of Common Lane and Elstree Road". We have looked into this and found that at the time (1941) these were the correct names of the roads. Today, following a reconfiguration of the roads, they are now **The Green** to the right and **Common Lane** to the left. The photo (right) shows the location of the 'The Brick' as it was locally known.

The third public house in Letchmore Heath was not called the **Tavenors** as we suggested, and although the present property is, the pub was known as **The Jolly Gardeners**. In 1903, the landlords were John and Annie Southey.



Major Sir Jocelyn Lucas (front left), Master of the Aldenham Harriers, out cubbing in Letchmore Heath during World War II, 5th October 1940. On the left is the wreckage of the Bricklayers Arms pub, which was bombed a few days earlier.

Photo by George W. Hales - Hulton Archive/Getty Images.

What's On...

Remember to check the Aldenham Parish Council website for all up to date events and meetings
www.aldenham-pc.gov.uk



Friday 23 to Sunday 25 June



St. John the Baptist Church, Aldenham 750th anniversary weekend. Please see page 5 for further details.

Saturday 1 July to Saturday 8 July

Radlett Art Society's 51st Annual Exhibition at the Radlett Centre.

Tuesday 11 July 7.30pm to 10pm



Women's Institute. There will be a talk entitled "Waste not want not" at Aldenham Prep School, Aldenham Road, Elstree, WD6 3AJ.

Thursday 13 July

Radlett Horticultural Society. Day trip to Barnsdale Gardens, Oakham, Rutland. Gardens familiar through the late Geoff Hamilton and Gardeners' World comprises 38 gardens within eight acres. Members only. Please see page 14 for information on how to join.

Tuesday 18 July at 2pm



Radlett Flower Club. There will be a demonstration entitled 'Summer Sizzlers' by Doug Howard at St John's Church, Gills Hill Lane. Visitors welcome £6.

Wednesday 2 August 8pm



Radlett Horticultural Society. Talk entitled "Say it with Poison" by Russell Bowes at The Vision Hall, Christ Church, Radlett. Members only. Please see page 14 on information on how to join.

Tuesday 8 August 7.30pm to 10pm



Women's Institute. There will be a talk entitled "A Walk Down Watling Street" at Aldenham Prep School, Aldenham Road, Elstree, WD6 3AJ.

Thursday 10 August 7.30pm for 8pm

Radlett Art Society lecture – *Pieter Bruegel* at the Radlett Centre.

Thursday 17 August



Radlett Horticultural Society. Day trip to Merriments Garden, East Sussex, a stunning house and

garden with deep curved borders with beautiful colour, texture and scent and two large ponds. The house was built by Edwin Lutyens. Members only. Please see page 14 on information on how to join.

Sunday 20 August

Radlett Art Society visit to Clarence House, London. Further details on www.radlett-art-society.co.uk

Thursday 7 September 7.30pm for 8pm



Radlett Art Society lecture – *Toulouse-Lautrec and the Music Hall of Paris* at the Radlett Centre.

Sunday 10 September

Radlett Art Society 3 day trip to Cardiff. Further details on www.radlett-art-society.co.uk

Tuesday 12 September 7.30pm to 10pm



Women's Institute. There will be a talk entitled "Blood Runners" at Aldenham Prep School, Aldenham Road, Elstree, WD6 3AJ.

Friday 15 to Sunday 17 September

St. John the Baptist Church, Aldenham. Art Exhibition. Further details from Richard Wheeler at rggw@waitrose.com.

Tuesday 19 September at 2pm



Radlett Flower Club. There will be a demonstration entitled 'Hollywood meets Bollywood' by Annette Parshotam at St John's Church, Gills Hill Lane. Visitors welcome £6.

Sunday 24 September

Radlett Art Society visit to Snowhills Manor and Garden. Further details at www.radlett-art-society.co.uk

St. John the Baptist Church, Aldenham. Harvest Lunch

Tuesday 3 October 12pm for 1pm

Radlett Art Society lecture – *Ellen Terry and the Aesthetes* at the Radlett Centre.

Wednesday 4 October



Radlett Music Club. The Ensemble Mirage Quintet concert at the Radlett Centre. Tickets £15 from the Centre Box Office. Further details www.radlett-music-club.co.uk

Tuesday 10 October 7.30pm to 10pm

Women's Institute. There will be a talk on a topic to be confirmed at Aldenham Prep School, Aldenham Road, Elstree, WD6 3AJ.

Tuesday 17 October at 2pm

Radlett Flower Club. A demonstration entitled 'Autumn Passion' by Margot Cooper at St John's Church, Gills Hill Lane. Visitors welcome £6.

Sunday 22 October

Radlett Art Society visit to Osterley House. Further details at www.radlett-art-society.co.uk



Starring Milkshake! favourites Bob the Builder, Little Princess, Noddy, Fireman Sam, Shimmer & Shine, Pip from Pip Ahoy!, Winnie and Wilbur, Wissper, Milkshake's very own Milkshake! Monkey and two Milkshake! presenters. This all singing, all dancing, musical masterpiece will take audiences on a journey through the world's favourite fairy tales, set amongst Milkshake's magical bookcase, and is sure to amaze and delight audience members, young and old.

* The Milkshake Live show will feature two Milkshake! Presenters – Jen, Derek, Kemi, Amy, Olivia, Curtis and Sita may only appear at certain venues.

JULY

- Sat 1 –** Radlett Art Society Annual Exhibition
Sat 8
Wed 12 Opera Cocktail 7.30pm
Thur 20 – Hairspray 7.30pm
Sat 22 (& 2.30pm Saturday)
Sun 23 Celebrating Hoagy 7.30pm
Mon 31 – Musical Theatre
Fri 4 Workshop

AUGUST

- Tues 8** High School Rocks! 11am & 3pm
Thur 10 **Milkshake! Live** 11am & 2pm
Thur 10 Art Society Lecture 8pm



Tues 15 The Gruffalo 1.30pm & 4.30pm

Wed 16 – The Gruffalo
Thur 17 10.30am & 1.30pm

Mon 21 – Musical Theatre
Fri 25 Workshop

SEPTEMBER

- Fri 1** Coldplace 7.30pm
Sat 2 Spectacular Science Show 3pm
Sun 3 Jazz of Dudley Moore 7.30pm
Wed 6 A Night of Dirty Dancing 7.30pm
Thur 7 Art Society Lecture 8pm
Fri 8 Showstopper! 7.30pm
Sat 9 Don't Dribble On The Dragon 2pm
Sat 9 **Alex Mendham & His Orchestra** 7.30pm
Sun 10 Frankie's Guys 7.30pm
Thur 14 Islands in the Stream 7.30pm
Fri 15 Paul Chowdhry 7.30pm
Sat 16 The Dressing Room 7.30pm
Mon 18 Children's Panto Auditions



Formed under the youthful direction of Alex Mendham, this 14-piece Orchestra, with the stunning vocals of the Dunlop Sisters, authentically performs hot jazz and sweet dance band music from the 'Art Deco' era but with a modern energy and passion. Taking you on an exciting and glamorous journey back to Hollywood's golden age of the 1920s/30s, with the hits of Gershwin, Cole Porter, Duke Ellington and Jerome Kern and others providing an unforgettable evening of music.

Sat 23 The Sooty Show 11am & 2.30pm

Sun 24 The Magnificent Music Hall 2.30pm

OCTOBER

- Thur 5** Forbidden Nights 7.30pm
Sat 7 Abba Forever 7.30pm
Sun 15 Ronnie Scott's Soho Songbook 7.30pm
Wed 18 Paul Zerdin 7.30pm
Thur 19 – The Tiger Who Came to Tea 1.30pm & 4.30pm
Fri 20
Sat 21 Beyond the Barricade 7.30pm
Tues 24 The Little Mix Experience 6pm
Wed 25 The Red Room 7.30pm
Thur 26 & Fri 27 Lost & Found 11.30am & 2.30pm
Fri 27 Kathy Lette 7.30pm
Sat 28 The Nutcracker 2.30pm

www.radlettcentre.co.uk www.radlettcentre.co.uk www.radlettcentre.co.uk

Radlett Archive Group

The aims and objectives of RAG are to have initially a permanent exhibition of the archives of the Parish of Aldenham and to ultimately have a museum. A room on the first floor of the Radlett Library has been secured from 1 June 2017. The collection will be housed there as from that date and the summer months will be spent sorting and cataloguing.

It is hoped to have a grand opening

in September when visitors will be able to come and view the exhibits.

To register your interest in joining RAG please contact **Pete Turner** on **01923 856958** or email **turnerradlett@aol.com**

To donate to RAG please contact **Roger Housechild** on **01923 856956** or email **rogerhousechild@hotmail.com**

Jan Adams

CITIZEN'S ADVICE BUREAU

Sessions are held every Tuesday from 10am to 1pm on First Floor, The Radlett Centre.

Sessions operate on a 'drop-in' basis. For telephone advice please phone our Hertfordshire Adviceline on **03444 111 444**.

citizens advice



Flower Festival at St John the Baptist Church in 2000.

The Grade 1, St John the Baptist Church in Aldenham will be celebrating the wonderful and historic occasion of its 750th Anniversary over the weekend of the 23, 24 and 25 June.

A beautiful themed Flower Festival will be spread throughout the Church and will feature twenty-two flower displays depicting 'Aldenham Through The Ages'.

To give you an idea of the floral exhibits featured, one is titled 'St John the Baptist' and will be displayed in and around the font. Another exhibit is titled 'King Offa's Charter 785AD' and tells the story of Offa who granted the land at Aldenham to the Abbot of Westminster and another exhibit is titled 'Roger, (first) Vicar of Aldenham in 1267'. Each of the twenty-two arrangements is accompanied by an explanation of the history associated with each display and its connection to the Church and the Parish of Aldenham.

The anniversary is a three day event starting on Friday 23 June, 2pm to 5pm, Saturday 24, 10am to 4.30pm and Sunday 25, 2pm to 4pm. Tea and cake will be served during these times.

St John The Baptist Church, Aldenham

750th Anniversary Celebrations

23, 24 and 25 June 2017

On the Saturday evening a Pageant will start at 6.30pm. Everybody is welcome and historical costumes will be provided for the audience to dress up.

A Patronal Service will be held on Sunday 25 June at 10.30am where the guest preacher will be the Revd. Vernon White, who is Canon Theologian at Westminster Cathedral.

For further information, please contact **Julia Beynon** on **01923 857017** or email julia.beynon@ntlworld.com

THE READING AGENCY AND LIBRARIES PRESENT

ANIMAL AGENTS

SUMMER READING CHALLENGE 2017

This summer, go wild for a marvellous mystery at your library!



THE READING AGENCY

Hertfordshire Libraries and The Reading Agency are delighted to announce that Animal Agents, Summer Reading Challenge 2017 will launch on Saturday 15 July.

We're challenging children of all ages to read six library books over the summer holidays and return to the library to tell us about them. They can read anything they choose, including story books, fact books, talking books, and even e-books (available to download for free from our e-library).

As children report back on what they've read, they'll be rewarded with limited edition *Animal Agents* smelly stickers

to help them sniff out the truth behind the mystery and catch the culprit. Every child who finishes their six books will be awarded a medal and a certificate. Children who finish by Saturday 9 September will also have the chance to win a ticket to an exclusive author event.

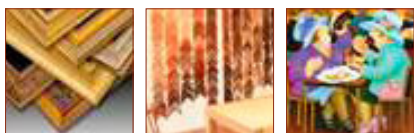
It is free to take part; all children need to do is visit their local library from 15 July to collect a starter pack, while stocks last. The Summer Reading Challenge ends on 9 September.

Children can also download the *Animal Agents* app and visit www.animal-agents.org.uk for more fun and games.

For more information visit www.hertfordshire.gov.uk/libraries, telephone **0300 123 4049**, or drop into your local library. Follow us on www.facebook.com/hertslibraries and on Twitter [@HertsLibraries](https://twitter.com/HertsLibraries) to receive all the latest updates about activities near you.



Bespoke Framing Service



Gallery 105

105 Victoria Street
St. Albans AL1 3TJ

Call Jean Dennis

Tel: 01727 833557

www.gallery105.co.uk

SERVICED OFFICES AVAILABLE IN
RADLETT VILLAGE



We provide:

- **Fully serviced self contained office suites** both short and long term licences.
- **Consulting room** available half or full day basis.
- **Onsite parking** and visitor parking.
- **Close to Radlett station.**

t: 0845 872 4949 e: info@thecornworks.co.uk

Call in and see us at:

The Corn Works, Station Road,
Radlett, Hertfordshire, WD7 8JY

www.thecornworks.co.uk



Do you qualify for transport to your NHS appointment?

Patients normally make their own way to NHS appointments. Transport may be available to you depending on:

- Your medical condition
- Your mobility
- Your support needs.

To find out if you qualify call

0300 303 2101

Please have your NHS number to hand when you call.

You can find this on your appointment letters.

Aldenham Park Run

Parkrun is the name given to a collection of 5km running events that take place every Saturday morning in 14 countries across five continents. All the Parkrun events are run by volunteers and participation is free of charge. Each runner must register online in advance for a unique athlete number and to print their own identification barcode for use when taking part. The runners' results in each event are processed and uploaded online after the run by volunteers. It was founded in 2004 at Bushy Parkrun and since then the Park Run Empire has grown to over 2,000,000 people worldwide.

I first attended the Aldenham Park Run in October 2016 and immediately I was hooked by the generosity of spirit that is found at these events. There are volunteers that help direct runners around the course and each Park Run has a Race Director that manages the event and celebrates new runners to Park Run. There are over 400 Park runs across the UK and I would highly

recommend that you join one of these great events.

I am a Housemaster at McGill's House at Aldenham School and each week I take the boarders who have slept over on the Friday night to the run and I have set up The McGill's Tartlet's running club! I have encouraged staff, parents and students from across the school to become involved and on 25th March over 90 runners from the Aldenham School Community ran raising over £2,500 for the Teenage Cancer Trust charity.

I have set a target of reaching 50 Park Runs by the end of 2017. So far I have managed 26 runs but have unfortunately picked up an ankle injury. Though I cannot run, I still attend as a volunteer



and marshal at one of the corners cheering everybody on. It is great to see people enjoying the run and also getting fitter and being part of a wider community event. I would urge all of you out there to come and get involved as it's great fun!

Last week Aldenham celebrated its 100th Park Run and it celebrates its two year Anniversary in June. I look forward to seeing many of you at Aldenham Country Park in the coming months it is a truly uplifting and excellent experience – do come and join us!

Michael Yeabsley

ParksHerts

With over a hundred flagship parks in the county, there is so much more to see in Hertfordshire.

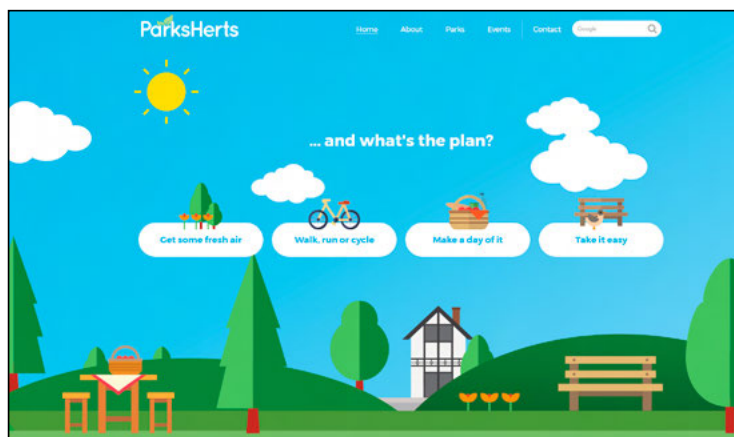
To help you make the most of our parks and open spaces, Hertsmere Borough Council has teamed up with nine local authorities to bring you *ParksHerts* which will officially launch during *Love Parks Week* (14 to 23 July).

ParksHerts is a web application used through your web browser that contains information on Hertfordshire's parks and open spaces to encourage you to explore our valuable local spaces and to help

you make outdoor exercise a part of your everyday life.

ParksHerts users will be able to find their perfect park by selecting filters based on who's going, what activities they want and the facilities offered. So, whether it's to let the kids run about, walk the dog, relax in nature or to get fit – *ParksHerts* will help you get out in Hertfordshire.

Look out for the *ParksHerts* website – www.parksherts.co.uk – coming soon!



The future of the footpath around Aldenham Reservoir

We have some good news for you regarding our efforts to get the path round Aldenham Reservoir designated formally and legally as a public right of way. You will recall that back in 2013, with the help of evidence provided by park users, we applied to Hertfordshire County Council for the path to be made a right of way. After a long delay the County Council rejected our application in October 2016, citing a number of complex legal arguments. At the end of last year we submitted an appeal to the Secretary of State for the Environment via the Planning Inspectorate to have this rejection

overturned; at the same time additional evidence on the use of the path going back to 1936 was submitted.

The Inspector has just ruled in our favour ie. to accept the case for the path to be designated a public right of way. This may not be the end of the story. There may still be objections in the process of executing the decision and the possibility of the case returning to the Secretary of State. For the moment however we should be pleased with this positive decision from the Inspector.

Besides the efforts of the Trustees we are



particularly indebted to the support we have received from the Ramblers in preparing our appeal.

*Simon Ray, Chairman,
Aldenham Country Park Trust Ltd*



Chantry Cottage

Chantry Cottage, in Cobden Hill, is the last building on the left hand side of Watling Street, Radlett looking towards Elstree.

The original Chantry Cottage or Chapel, as it was then known, was erected in 1510 by Sir Humphrey Coningsby, who lived at Penne's Place (north of Butterfly Lane). He was a Justice of the King's Bench in the reign of King Henry VIII.

The Chantry, which was dedicated to St Mary the Virgin and St George the Martyr, was founded 'for the consolation of Christ's faithful and especially for the infirm, and for men and women broken with age' and women who have infants, who dwell far from the parish Church of St John the Baptist at Aldenham. In 1513, Sir Coningsby was granted a licence for the Chantry for the celebration of Baptisms and the holy Eucharist.

The use of this 'outpost' of worship was made justifiable by the many robberies and break-ins that took place while the congregation were away at worship in Aldenham. The robbers allegedly came from 'a suspect place called Busshey Heth'.

Although the Chantry survived the religious reforms of Henry VIII, it was dissolved in 1552, along with other relics of Catholicism, on the orders of Edward VI. The land on which Sir Coningsby had built the Chantry, was in 1552, given to a Thomas Strete, a Groom in the Privy Chamber. It seems that Thomas rebuilt the Chantry and called it a Chapel House; it may have been a conversion of the original chapel and was still standing in 1704.

The present Chantry Cottage was built at the beginning of the nineteenth century on the same site; although never a chapel itself it was obviously designed to reflect its predecessors.

Jan Adams

Many thanks to John Southey and Don Wratten authors of *The Book of Radlett and Aldenham* for the historical information contained in this article



Mitzvah Day

Over the last seven years the various faith groups in Radlett* and the surrounding area have joined forces every November to take part in Mitzvah Day/Community Action Day.

Instead of just complaining about the state of our environment, we have tried to make our part of it a little better by working with Radlett Horticultural Society on various local projects with the encouragement of Aldenham Parish Council

- 2010** Rose Field – *clearance of seriously overgrown waste land.*
- 2011** Rose Field – *planting of trees in tree nursery for use in Radlett.*
- 2012** Scrubbits Park – *clearance of overgrown bushes and waste clearance.*
- 2013** Tidy streets of litter – *clearance of St Johns' churchyard.*
- 2014** Bulb planting in Aldenham
- 2015** Bulb planting in Letchmore Heath
- 2016** Bulb planting in Phillimore Recreation Ground
- 2017** Watch this space!!

* = Christchurch CoE, St Johns CoE, Bhaktivedanta Manor, Radlett United Synagogue, Radlett Reform Synagogue

Lewis Osbourne

New bench on Theobald Street

A new bench has been installed by the bus stop on Theobald Street with funds from the Radlett Festival Committee. Many people from the Newberries Estate wait here for the buses to St. Albans and Watford and it is hoped that this will give them the opportunity to rest their legs while they wait for the bus, or in case it is delayed.

The Festival Committee has been providing benches around Radlett since 2007 with funds raised from the popular community event, especially considering the number of hills in Radlett, where the chance of a sit down and rest is often most welcome.

If anyone wishes to purchase such a bench in memory of a loved one, the Parish Council would be delighted to arrange this on their behalf.

Viv Charrett





ALDENHAM PARISH COUNCIL

www.aldenham-pc.gov.uk

Each Aldenhams Parish Councillor now has their own email address as follows:

ALDENHAM EAST



Councillor Gill Balen – cllr.gill.balen@aldenham-pc.gov.uk.

Chairman of the Around Radlett Working Party
Member of the Planning Committee
Member of the Community Development and Engagement Committee
Member of the Radlett Archive Group

*Trustee of the Gravel Allotments Trust
*Trustee of Platt Subsidiary Foundation
*Radlett Village Institute



Councillor Viv Charrett – cllr.viv.charrett@aldenham-pc.gov.uk.

Chairman of the Planning Committee
Vice Chairman of the Council
Member of the Parks and Open Spaces Committee
Member of the Finance and General Purposes Committee
Neighbourhood Plan Steering Group
Member of the Around Radlett Working Party
Member of the Strategic Planning Committee



Councillor Saleem Khawaja – cllr.saleem.khawaja@aldenham-pc.gov.uk.
Member of the Planning Committee



Councillor Jackie Lefton – cllr.jackie.lefton@aldenham-pc.gov.uk.

Chairman of Finance and General Purposes Committee
Member of the Planning Committee
Member of the Community Development and Engagement Committee
Member of Finance and General Purposes Committee

*Trustee of the Radlett Centre Trust



Councillor Neil Payne – cllr.neil.payne@aldenham-pc.gov.uk.

Chairman of the Council
Chairman of the Strategic Planning Committee
Neighbourhood Plan Steering Group
Member of the Planning Committee
Member of the Finance and General Purposes Committee

*Trustee of the Radlett Centre Trust



Councillor Lee Wood – cllr.lee.wood@aldenham-pc.gov.uk.

Member of the Planning Committee
Member of the Parks and Open Spaces Committee

*Members of outside organisation

ALDENHAM WEST



Councillor Tony Butwick – cllr.tony.butwick@aldenham-pc.gov.uk.

Member of the Parks and Open Spaces Committee
Member of the Community Development and Engagement Committee
Member of the Strategic Planning Committee



Councillor Ben Evans – cllr.ben.evans@aldenham-pc.gov.uk.

Member of the Community Development and Engagement Committee
Member of the Parks and Open Spaces Committee

*Aldenhams
Alms Houses



Councillor David Lambert – cllr.david.lambert@aldenham-pc.gov.uk.

Member of the Strategic Planning Committee

*Elstree Airport Consultative Committee
*Aldenhams Country Park
*Aldenhams Memorial Hall
*Trustee of the Gravel Allotments Trust



Councillor Estelle Samuelson –

cllr.estelle.samuelson@aldenham-pc.gov.uk.

Chairman of the Community Development and Engagement Committee
Member of the Planning Committee
Member of the Strategic Planning Committee
Member of the Finance and General Purposes Committee
Member of the Around Radlett Working Party
Neighbourhood Plan Steering Group

*Vice Chairman of the Radlett, Aldenhams and Bushey Community Safety Partnership



Councillor Garry Walton – cllr.garry.walton@aldenham-pc.gov.uk.

Chairman of the Parks and Open Spaces Committee
Member of Finance & General Purposes Committee

*Radlett Village Institute



Councillor Chris Wilkins – cllr.chris.wilkins@aldenham-pc.gov.uk.

Vice Chairman of the Finance and General Purposes Committee
Member of the Community Development and Engagement Committee
Member of the Parks and Open Spaces Committee
Member of the Strategic Planning Committee
Member of the Around Radlett Working Party

*Radlett Village Institute

Parish Council Offices

Aldenhams Parish Council, 1st Floor, The Radlett Centre, Radlett.
Tel: 01923 856433

All parish councillors can be contacted through the council office.

Office Opening Hours: **Monday to Friday 10am-2.30pm**
Parish Council Manager: **Peter Evans**
Email: manager@aldenham-pc.gov.uk

Outside these hours, in case of emergency please contact
07833 251 115.

Email addresses for the office are:

For **Peter Evans**, Parish Council Manager –
manager@aldenham-pc.gov.uk

For **Monika Duong**, Accounts Officer –
accounts@aldenham-pc.gov.uk

For **Paula Paley**, Planning Officer – planning@aldenham-pc.gov.uk

For **Manisha Kotecha**, Parks and Open Spaces Officer – parks@aldenham-pc.gov.uk

For **Claire Larkin**, Community Development and Engagement Officer (also events/social media/website and anything relating to 'Around Radlett') – community@aldenham-pc.gov.uk



Oliver Dowden, MP for Hertsmere

Your local MP Oliver Dowden holds regular surgeries around the constituency. If you would like to arrange an appointment then please call
020 7219 6239 or
email: oliver@oliverdowden.com

Forthcoming Committee Meetings July – October 2017

Contact the Parish Council office for times of meetings.

July

Mon 3 Planning
Wed 5 Parks and Open Spaces
Thurs 6 Community Development & Engagement
Mon 17 Planning
Tue 18 Full Council
Fri 21 Strategic Planning

August

Mon 7 Planning
Mon 21 Planning

September

Mon 4 Planning
Tue 5 Finance and General Purpose
Wed 6 Parks and Open Spaces
Tue 12 Full Council

Mon 18 Planning

October

Mon 2 Planning
Thurs 5 Community Engagement and Development
Fri 6 Strategic Planning
Tue 10 Full Council
Mon 16 Planning

Hertsme Borough Council

Aldenhams East

Councillor John Graham
cllr.john.graham@hertsme.gov.uk

Councillor Charles Goldstein
cllr.goldstein@hertsme.gov.uk

Aldenhams West

Councillor David Lambert
cllr.david.lambert@hertsme.gov.uk

Minutes from the Committee meetings are uploaded to the website once they have been approved and signed by the Chairman of the relevant committee. Please see all dates, agendas and minutes for Council meetings on www.aldenham-pc.gov.uk

Councillor Caroline Clapper
carolineclapper@hertscc.gov.uk

Hertfordshire County Council

Caroline Clapper – carolineclapper@hertscc.gov.uk

DISCLAIMER

The words written in the articles contained in this edition are the authors own. No responsibility can be accepted for errors or omissions.

All copy correct at the time of going to press. Edited and Produced by Aldenhams Parish Council, The Radlett Centre, Aldenhams Avenue, Radlett, WD7 8HL



ALDENHAM PARISH COUNCIL

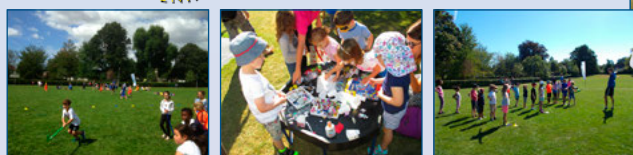
www.aldenham-pc.gov.uk

FREE Children's Summertime Activities for 0-12 year olds in Radlett



Every Tuesday morning
from 10am-12.30pm
throughout August at
Phillimore Recreation
Ground.

Activities include:
Messy Play, Multi-sports,
Wildplay & Bushcraft,
face painting, bouncy castle
and much more!



For more information please contact Claire at Aldenhams Parish Council
on 01923 856433 or email: community@aldenham-pc.gov.uk



Aldenhams Parish Council hands over a cheque to Small Acts of Kindness

SMALL
ACTS OF
KINDNESS
— WATFORD —

At the end of February, the Chairman of Aldenhams Parish Council, Cllr. Neil Payne and Cllr. Estelle Samuelson visited *Small Acts of Kindness* in Watford to hand over a cheque for a grant of £500 which will go towards the sourcing and distribution of 'Keep Warm Packs' which are distributed to the older, often more lonely and isolated people in the Parish of Aldenhams. If you know of anyone who would benefit from a pack or for further information about *Small Acts of Kindness* please contact Lynne on 01923 372717.

Community Room at the Radlett Centre

Aldenhams Parish Council is sponsoring a room in the Radlett Centre every Tuesday afternoon for use by community groups and charities. This room is free to use and is available from 1.30pm until 4.30pm. Community Hertsmeres will be using this room every first and third Tuesday of the month as its Radlett hub and will be

promoting its volunteering services and organised day trips amongst other things. Everyone is welcome, so just turn up if you would like to find out more. If you are interested in booking the Community Room please contact Claire on 01923 856433 or email community@aldenham-pc.gov.uk.

RADLETT YOUTH COUNCIL



Radlett's Youth Council organised a 'Question Time' event with Oliver Dowden MP and a panel of guests which included



Cllr. Caroline Clapper, Professor Barnett (Chairman of West Herts Hospital Trust – NHS) and Stuart Nagler (Assistant Police and Crime Commissioner for Herts). The event was hosted at Edge Grove School in Aldenhams and was chaired by the Headmaster Ben Evans.

A range of questions had been submitted in advance by the 11-18 year olds who were in attendance and these included a vast range of topics including national issues such as Brexit and the NHS and local issues such as cycling lanes in



Radlett and the building of new homes on our green spaces. It was a very entertaining event which provided lively debate and gave the students a great opportunity to interact and engage with local decision-makers. For more information about the Radlett Youth Council please contact Claire at Aldenhams Parish Council on community@aldenham-pc.gov.uk.

Lawrence Lee, Chairman of Radlett Youth Council



ALDENHAM PARISH COUNCIL

www.aldenham-pc.gov.uk

Section 106 and Community Infrastructure Levy explained

Section 106 (S106) Agreements are legal agreements between Local Authorities (in our case Hertsmere Borough Council) and developers; these are linked to planning permissions and can also be known as planning obligations.

Section 106 agreements are drafted when it is considered that a development will have significant impacts on the local area.

The S106 will vary depending on the nature of the development and based on the needs of the District. The developer will pay the money to the Borough Council but a proportion of it can be used by the local Parish Council to contribute to local area improvements which are of benefit to the local community, but it must be spent on certain categories of work, and within certain timescales, or the money must be repaid to the developer.

Hertsmere's spending categories fall into the following groups:

- Open Space and recreation including allotments
- Trees
- Community Safety
- Employment

- Affordable Housing

Also there will be funds towards

- Education (Schools & Colleges)
- Heath Facilities
- Transport

During 2016/17 Aldenhams Parish Council has used these Section 106 monies to fund the following areas of work:

- Improvement works to the allotments adjacent to Phillimore Rec including access road, car park provision and secure fencing.
- Improvements to the Radlett Bowls Club including the pathway surrounding the bowling green and exterior fencing.
- Installing new drainage pipes to the main field on Phillimore Recreation Ground.
- Replacement fencing at Letchmore Heath Children's Play Area.

Recent Government legislation has changed these rules, and Section 106 agreements will be phased out and the new charge on developers is called CIL (Community Infrastructure Levy).

CIL is a charge, introduced by the Planning Act 2008 as a tool for local authorities in England and

Wales to help deliver infrastructure to support the development of their area. It came into force on 6 April 2010 through the Community Infrastructure Levy Regulations 2010. New developments that create net additional floor space of 100m² or more, or create a new dwelling, are potentially liable for the levy.

Hertsmere Borough Council adopted CIL on 17 September 2014, with CIL coming into effect from 1 December 2014. All planning applications determined on or after 1 December 2014 may be liable to pay CIL. In Radlett the charge is £180/m². However, there is an exclusion to this, that if the developer can prove that he/she will be living in the house for their own use for a certain period, then CIL does not have to be paid.

In principle, the local Parish Council should receive 15% of these funds for local purposes (although the Borough Council can also spend their own money on local projects to the benefit of residents) but, if a Neighbourhood Plan is approved and comes into force for the Parish Council area, then this proportion increases to 25%. One benefit of the change to CIL is that the choice of how and where to spend it, is not so prescriptive, and Parish Councils have more flexibility on the projects to choose for its use.

Viv Charrett

Statement by the Parish Council on Newberries Car Park

The Annual Parish Meeting, which was held on 13 March, was dominated by questions from the audience relating to the proposed development by Hertsmere Borough Council (HBC) of Newberries Car Park (NCP). This was regrettable for several reasons:

- the agenda and reports from the Chairman of the Parish Council (APC) and from the Chairmen of the various sub-committees had been delivered to all households in the parish ahead of the meeting;
- despite very many of the attendees having been under the false assumption that it was a 'Newberries Car Park' meeting, the matter was not specifically on the agenda, although the audience was invited to ask questions on relevant matters of interest to residents at the end of the meeting;
- Christine Lyons, Head of Planning and Economic Development at HBC presented 'Planning for Growth in Hertsmere' project (HBC's new Local Plan) and invited comments from residents. As Head of Planning, she had quite specifically not been involved with the NCP project as she would ultimately be required to review any planning application. Nearly all the questions from the audience, however, related to the NCP proposal and not the Local Plan. Not

surprisingly, therefore, Christine was genuinely unable to answer such questions. This was a lost opportunity for residents to understand and question the local plan consultation exercise, as it will impact our village significantly for the next 20 years;

- Newberries Car Park is owned by HBC, not APC, and the proposal for development had been put forward by HBC;
- APC had never approved the proposal and had repeatedly notified HBC of its reservations, by raising a number of specific and targeted questions;
- many of the questions and views from the floor about the NCP project were heated and, in some cases, rude and discourteous; and
- as a result of the dominance of the audience participation on the NCP project, the opportunity for questions on other matters was lost.

Subsequent to the Meeting, HBC announced the formation of a Newberries Car Park Development Group "to comprise councillors and senior Hertsmere officers, together with Radlett representatives and other local interested parties. The group will comprise around 10 members who over the next 12 months will be charged with bringing together ideas for NCP which can be

examined, scrutinised, expanded and developed for the best ideas to be put before residents for their views and choices".

In addition, at the end of March, APC sent a further letter to HBC asking for answers to its previous two letters and requesting a meeting with the appropriate HBC councillors and officers to get answers to some very detailed questions. These questions reflect issues and concerns raised by local residents.

Unfortunately, currently the officers and councillors at HBC are in a period of purdah, until after the County Council and General Elections on 4 May and 8 June, during which they are not permitted to make any public statements on the project. Consequently, the project is currently on hold but it is hoped that progress can resume rapidly after the period of purdah.

There is undoubtedly strong opposition to the original proposal and many unanswered questions and concerns. The formation of the NCP Development Group and the proposed subsequent consultation process should assist the preparation of a proposal which will be more acceptable to all concerned. It is regrettable, however, that some of the methods adopted to arrive at this position were quite so unpleasant and aggressive.

*On behalf of
Aldenhams Parish Council*



Works at Phillimore Recreation Grounds and allotments

Residents of Radlett and users of the recreation ground will have noticed that works are being carried out to the allotments and boundary between the allotments and the recreation ground. Over the past month, I have been asked by many people about these works, so I wanted to take this opportunity to explain what has been done, why it was done, how it was funded and the remaining works that still need to be carried out.

The works consisted of two separate projects.

The first regards the first allotment plot. This is used by Parish Council staff to grow the flowers that each summer brighten up our community in the hanging baskets and other floral displays. These were grown in a green house and a polytunnel. Both of these structures had reached the end of their life and could not be economically repaired. The Parish Council decided to replace these two structures with a single polytunnel that covers, roughly, the same area as the two older structures. At the same time the surface of the allotment plots were to be improved along with fencing and vehicle access. These works are now complete, except for planting of trees and hedges around the perimeter that will further screen the new polytunnel from the recreation ground and neighbouring properties. This project was wholly funded through the Parish Council's reserves.

The second project aimed to improve the allotment access road, surface the car park, replace the unsightly gates and replace the boundary between the allotments and the recreation ground. The boundary fence badly needed replacing. The whole length had disintegrated over the years. The fencing along Fir Spring wood was erected as a temporary measure many years ago, with building site panels. These were in danger of falling down, especially as the embankment had eroded to be very steep. It was also decided to replace the hedge. While

being very old and green, the hedge contained many holes, one long section having been replaced by old pieces of wood that looked unsightly. About half of the length of the hedge was infested with Ivy that had strangled the hedging and deprived it of light. These hedge plants had died away. The "green" was only provided by the Ivy. It was only a matter of time before the hedge rotted back and collapsed.

New hedges will be planted towards the end of the summer. This is the best time to plant. The type of hedging to be used is still to be decided.

These works were to be funded, through what is known as, a 'section 106' grant. This is money collected from property developers, by Hertsmere Council, to fund community infrastructure. The money is subjected to a dictated formula that splits it into different categories. One of these categories is allotments. If the money is not spent by a certain time, it is returned to the developer.

The Parish Council's original intent was to have the roadway and car park laid with a surface that permitted grass to grow through it. However, once quotations were received for this, it was clear that the cost far exceeded the funds available. It was then, reluctantly, decided to use tarmac as this was the only option that could be afforded through the available grant. These works commenced in early January to enable the allotments to be fully opened by the spring when activity is at its height.

Unfortunately there are a few issues with the work that must be rectified:

1. The surface of the road is too high. The road will be dug up and re-laid at the correct height. Negotiations are in progress with the contractor to carry out this remedial work. Also a different surface will be used in order to comply with Planning requirements and to make it more visually in keeping with the rural setting. Once the road is restored

to its correct height the access gate from the road to the recreation ground will be reinstated.

2. Too much soil was placed in Fir Spring Wood. It was intended to lessen the slope on the embankment by using soil removed from the car park area. However, too much soil was placed there. This has to be removed. Again negotiations are ongoing with the contractor.
3. The black tarmac surface of the car park has drawn comment from residents that it is out of keeping with this location. This material was used because it is porous, it will fade over time and will be mostly out of sight once the new hedge is established. However, the Parish Council are listening to residents' concerns and are now investigating, economic, options to obtain a more rural appearance.

Hertsmere Planning Officers are involved with these remedial works, and full permission and agreement has to be obtained prior to the works commencing. This means an unavoidable delay.

I thank residents for their patience while these works are carried out. Should any residents have questions or suggestions regarding these works, please contact the Parish Council offices.

Councillor Garry Walton, Chairman of Parks and Open Spaces Committee

Winter Lights

Radlett residents will have noticed that the Winter lights along Newberries Parade were kept on until the end of March this year as a trial to brighten up the village during the grey winter afternoons and evenings. Thanks to LED lighting the cost of doing this was minimal and the overwhelming majority of people welcomed this with their positive feedback. Aldenhams Parish Council is hoping to repeat this again this Winter. We would like to hear whether you agree with this and if so, how long you would like the lights to be kept on for in 2017/18.



ALDENHAM PARISH COUNCIL

www.aldenham-pc.gov.uk

Radlett Gardens' update

If you are not familiar with the Radlett Gardens, this area is situated on Watling Street in-between the Esso Petrol Garage and Daisy's in the Park.

The land is owned by Aldenhams Parish Council (APC), purchased from Charles Part in the early 20th Century.

In 1935, the land frontage was subject to a CPO (Compulsory Purchase Order) from the Dept. of Transport, in order to widen Watling Street although only part of that scheme went through.

The site is a sunken area which is bordered on one side by the railway line and on the other side by Watling Street.

In 1999 APC carried out extensive

works that created a garden in the area. Two large beds were created, along with a water feature, and a pagoda was placed in the middle.

There are many trees on the site which mitigate the effects of the railway and the petrol station. Around the whole site there is a block paving pathway, and on the Watling Street side there is a low wall that depicts the previous twin towns with Radlett.



EE Telecommunications

APC is aware that since the removal of the telecommunication mast on top of the former Fire Station on Watling Street, phone signals on some networks have been poor. So, when EE approached APC and stated that they wished to place a phone mast on Watling Street just outside 'Daisy in the Park', Aldenhams Parish Council was supportive of the concept but felt that a location further away from the highway would help the aesthetics of such a structure.

APC suggested a site in the corner of Radlett Gardens behind where there

is currently a raised bed. EE were supportive of this suggestion and have agreed, as part of the construction works, to remove both raised beds as they have become unmanageable and the subject of some vandalism over the years.

Planning Permission for the phone mast has now been granted by Hertsmere Borough Council, so subject to the paperwork, work should commence in July.

During these works, access to Radlett Gardens will be very restricted but hopefully not for too long.



APC needs your input

With the raised beds removed, most of the refurbishment ideas from 1999 will have been removed or will be approaching the end of their useful life.

In its emerging 'Open Spaces Strategy' APC refers to this area as 'An area of peace and contemplation'. It wishes to keep this as a green area on busy Watling Street and would like to use this opportunity to redesign Radlett Gardens, so that it reflects the concept of peace and contemplation. It also needs to provide an area that is easy to maintain.

APC is looking for sketch designs or ideas as to how this area could look in 2018 and beyond.

We have many creative residents in the village, so hopefully we can tap into your creativity to produce something unique and lovely for the benefit of all. These ideas will be considered by the Parks & Open Spaces Committee at its meeting on 6th September 2017.

War Memorial

An idea that APC has received from residents in the past is to consider whether to relocate the War Memorial from its current position at the bottom of Shenley Hill (opposite Nat West Bank) into Radlett Gardens.

The reasons being:

- it will fit with the concept of 'An area of peace and contemplation'
- reduce exposure of the surface of the Memorial to pollutants from vehicles
- provide a safer area for those

attending the annual Remembrance Day Service which has seen increasing numbers in recent years

- it could be a feature of the gardens and enhance Watling Street

This has not been discussed by APC and no formal decision has been made. It is purely an idea that has been mooted before and is outlined here to stimulate and generate engagement from our community.

Please email or post any ideas or sketches to APC at the addresses below, or if you wish to discuss this further, please contact:

Peter Evans,
Parish Council Manager,
on manager@aldenham-pc.gov.uk,
or tel: **01923 856433**.

Or call in person to:

Aldenhams Parish Council
First Floor
The Radlett Centre
1 Aldenhams Avenue
RADLETT
WD7 8HL



Radlett War Memorial by Judy Weisser

Jarrow March – 5-31 October 1936

The Jarrow March, also known as the Jarrow Crusade, was an organised protest against unemployment, deprivation and poverty suffered not only in Jarrow, Co. Durham, but also across the north of England, Scotland and Wales in the years between the First and Second World Wars. The Marches, or Crusades, of the unemployed from the north of England to London were termed as 'Hunger Marches'. At that time, without any means of benefit available, unless you were employed your family would certainly go hungry, sometimes become homeless and a dismal life is all you could expect. Cholera was rife and mortality rates were high. These men-only marches, from high unemployment areas, travelled hundreds of miles on foot to petition the National Government in Whitehall and highlight their desperate plight.

On 30 October 1936, the March, which was kept to a tight schedule, held its penultimate leg from St Albans to Edgware, travelling along Watling Street before its final journey to Marble Arch. As with other towns and villages along the route Radlett played a part in its journey. Local people, churches, political organisations and shopkeepers provided lunch to all the Marchers at the Recreation Ground, now known as Radlett Gardens, (between Barclays Bank and the petrol station). The support of the plight of the unemployed from the north of England had touched the hearts of those who lived in the south.

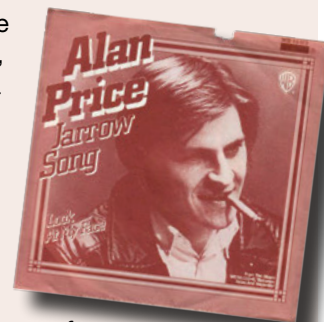


The Jarrow Crusaders filing past Marble Arch in London on the last leg of their march, 31st October 1936

On the final day, from Edgware to Marble Arch, large crowds watched as the column of Marchers proceeded to Marble Arch accompanied by their own mouth-organ band. On Sunday 1 November 1936 the Marchers proceeded to Hyde Park for a hastily organised public meeting; one reporter estimated that some 50,000 people attended.

In 1974, the rock singer, Alan Price, a Co. Durham man himself, released the 'Jarrow Song', which helped to

raise awareness of the events of 1936 to a new generation of young people. Alan Price played this song in concert at the Radlett Hall, now the United Synagogue, in the late 1980s. Alan's Stage and Artistic Director, Ian Leake, known locally as Streakie, who was a Park Road resident, organised the event. He decorated all the walls of the hall with Christmas trees and thousands of fairy lights. It looked amazing.



Jan Adams

Men in Sheds

Over 50+ years?

About to retire, semi-retired or retired?

MEN IN SHEDS

provides a friendly and supportive environment for men to learn new hobbies, share their skills and socialise with like-minded individuals. Some of the ideas include making models, painting, woodworking workshop and gardening – you can also bring your own skills and requests to the group.



The group meet twice a week on Mondays and Thursdays from 10am to 12 noon at the Clitheroe Health and Wellbeing Centre, Clitheroe Gardens, South Oxhey, Watford, Herts WD19 6RP.

Please call **01923 256360** or email **clitheroe@ageukherts.org.uk** for details.

The Red House Patients Group

The Red House Patient Participation Group (PPG) held its first AGM on April 26th.

After a short introduction by the Chairman, Stuart Nagler, the business part of the evening took place. It was put to the audience that the members of the Committee were prepared to stand for the forthcoming year, and thereafter there would be an election for members annually. This was agreed by those present.

Katie Fisher, CEO of West Herts Hospital Trust, gave a

presentation of the current standing of the Trust and its improvement since the last CQC visit. She was very open about the fact that much is still to be done, and answered questions frankly. She was optimistic that with a stable executive and non-executive Board things would continue to improve. The audience of about 60 people were very appreciative of her attitude.

Anyone who wishes to find out more about the PPG should look on the Red House website **www.theredhousegroup.com**, or contact the surgery for information.



Stuart Nagler,
Chairman



Bags of Help



Did you ever wonder what happens to the 5 pence that you now have to pay for a bag in the supermarket? If it's in Tesco, the money goes to projects that benefit local communities through Tesco's *Bags of Help* Scheme, administered by Groundwork.

It is a simple scheme for making grants to thousands of projects nationwide and is open to community groups and organisations (not individuals). The proposals, once evaluated as viable by Groundwork, are voted on by Tesco customers in their local stores and three winners are awarded £4,000, £2,000 or £1,000 every two months.

Applicants must be fully constituted organisations such as voluntary groups, schools, social housing providers, health bodies and parish councils (Aldenhams Parish Council has already benefited). The projects could range, for example, from buying sports kit, improving an existing building, or developing an outdoor space, to supporting events such as fun runs or seasonal activities. There is no need for match funding but each project has to be clearly self-contained.



If a group is interested, the first step should be to contact Groundwork Hertfordshire by telephone at **01707 260129** or **www.groundwork.org.uk/east** to find out whether an idea is eligible to apply and how to go about it.

John Howley

At the time of writing, Aldenhams Parish Council has been shortlisted by Groundworks for the '*Bags of Help*' scheme for funds which will contribute towards a '*Wildplay*' programme for 4 to 8 year olds at Phillimore Recreation Ground in August.

Radlett Horticultural Society



Don't forget the Radlett Horticultural Society store in Scrubbits Park Road is open every Sunday from 10am to 12pm from the beginning of February to the end of November.

You will find an array of essential items to help your plants grow, and tools to help control unwanted bugs and weeds. A special discount of 10%, available on the first Sunday of each month, is offered on purchases exceeding £10.00.

Membership

If you are interested in joining the Radlett Horticultural Society simply visit the store in Scrubbits Park Road on a Sunday morning between 10am and 12pm or contact the Membership Secretary, **Rachel Pearce** on **01923 854 984**.

Peter Hordern

"Yabba Dabba Doo!" – A fine example of a great new 'Flint Stone' development

Aldenhams Parish Council was delighted to see the finished new homes on the site of the old Radlett Youth and Community building at 2 Loom Lane, Radlett.



The original buildings on the site were erected in 1878 as a school for the village girls. The main hall building of the school has been sympathetically re-developed into a residential home by the developer JWC. They have also taken into account the original knapped 'flint stone' external walls of the school building and incorporated this feature into the new houses they have built that are facing Watling Street. The previous ultimate owners of the site, the Diocese of Westminster, were adamant that the new designs should be 'in keeping' with their surroundings and Hertsmere planners ensured that the view of the church was retained when entering the village from the south.

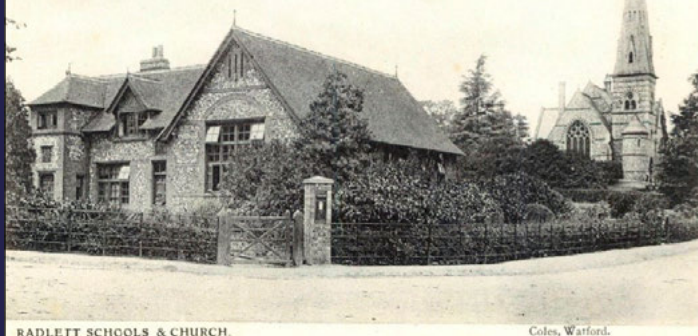
and tried hard to make the new houses fit into the character of the area properly. This being a conservation area and next to a Grade II listed church, it is important that serious thought was given to enhance the character of the original school building. The development conserves the structure and ensures the future survival and use of the historic building using design and materials that are appropriate.

So often this is not the case and so it is good to be able to give praise to the developer JWC when it is justifiably deserved.

We welcome more new builds of this nature and would encourage developers to work with the local community and Council more often. This will ensure that the Parish of Aldenhams remains the lovely place that brings people to live in this neighbourhood.

The Radlett Neighbourhood Plan will seek to make sure that any new development fits in with its surroundings. It can point to these particular new homes as a very good example of how to do it.

Councillor Estelle Samuelson



RADLETT SCHOOLS & CHURCH.

Coles, Watford.

It really is good to find a developer who has taken the street scene into consideration



The news of fly tipping on our country roads, farms and private property seems to be hitting the headlines more and more. We are constantly reminded of the huge cost to local authorities (and ultimately the Tax Payer) who are responsible for clearing it up.

Disposing of large unwanted items can be complicated and costly.

However, help is at hand and a **FREE COLLECTION SERVICE** is available for good quality unwanted furniture and electrical items.

TV'S, FRIDGE/FREEZERS, SOFA'S/ CHAIRS, BEDROOM FURNITURE

Please contact:

FURNITURE & ELECTRICAL CHARITY STORE

Unit 4, Queens Road, Watford WD17 2QN

Tel. 01923 804241

Email: watford@debra.org.uk.

Web: www.debra.org.uk.



Our local PCSO

Hello Residents,

With the approach of the summer evenings and the possible increase of garden use, be aware that houses, vehicles and sheds can become crime targets – by taking a little time you can help prevent yourself becoming the victim of a crime.

Premises: Secure any ladders and consider fitting security lights. If you are out of your home don't leave any ground floor windows open at the rear of the property.

Vehicles: Make sure your vehicle windows are fully closed, ensure the vehicle is fully locked and alarmed if possible.

Always be aware of doorstep callers and phone and internet scams.

We run neighbourhood surgeries in Radlett Library and mobile 'beat surgeries' every month to discuss crime-related concerns with residents – please come along.

We send details of events to Neighbourhood Watch members via the OWL messaging system, which we also use to send emails to residents about local crimes and relevant crime prevention advice.



Please visit **www.owl.co.uk** to sign up to this free service.

If you have any local policing issues you would like to discuss, please contact the Safer Neighbourhood Team by email at **sntbusheyandradlett@herts.pnn.police.uk** or via the police non-emergency number **101**.

If you see a crime in progress call **999** immediately.

PCSO Tim Conway 6263



MAKING A DIFFERENCE TOGETHER

We need your help to make Radlett a safe, happy and vibrant place in which to live and work.

**THURSDAY 2nd NOVEMBER
THE RADLETT CENTRE
7.00pm**

**Hertsmere Community
Safety Partnership**

together with

Aldenhams Parish Council

Invite you to join your local service providers, councillors and fellow residents, to come together to explore ways in which we can improve our community.

At the event there will be a short theatre performance followed by an opportunity to put forward your views, discuss ideas and ask any questions.

Together we plan to discover what is great about our community, as well as what is holding it back from being the best it can be.

Light Snacks and refreshments will be provided. This FREE event is open to people who live, work and study in Radlett.

More detailed information will follow shortly but as places will be limited we ask you to register your interest at **partnership.support@hertsmere.gov.uk**

We look forward to seeing you soon.

If you have any local policing issues you would like to discuss, please contact the **Safer Neighbourhood Team** at the contact details below.

DC 1921 Ailsa Turnbull

Large & small

Gem'll fix it

Just phone Gem on
01727 872136
Mobile: 07877 926130

Carpentry a speciality

Electrics • Decorating • Plumbing
Flat Packs • Plastering • Tiling
Replacement Windows & Doors
Bathrooms & Kitchens • Flooring
- and outside work

Full Home Maintenance
Park Street based
Free estimates given
References available

Virtually all jobs



Website Address: www.herts.police.uk

Neighbourhood

Police Team:..... 01707 354192

Non Urgent Calls:101

Urgent Emergency Calls:999

Email:

SNTBusheyandRadlett@herts.pnn.police.uk

Follow on: twitter.com/RadlettPolice



**Radlett Neighbourhood
Watch Co-Ordinator
Angela Thomson
email: at@thomsons.co.uk**



**Community Safety
Partnership
(Aldenhams and
Bushey)**

Zoe-Louise Keyte

Hertsmere CSP

**Civic Offices, Elstree Way,
Borehamwood, Herts, WD6 1WA**

email:

partnership.support@hertsmere.gov.uk

Phone: 020 8207 7801

NETHERCOTT

INDEPENDENT FAMILY FUNERAL
DIRECTORS & MONUMENTAL MASONS
OF DISTINCTION SINCE 1911

20 ALDENHAM ROAD,
RADLETT WD7 8AX
TEL: 01923 852899

98 SHENLEY ROAD,
BOREHAMWOOD WD6
TEL: 020 8953 9555



Safe and happy at Tomten Kennels, Cattery and Grooming Salon



Take the worry out of holiday arrangements by ensuring
that your pets are in safe, professional hands.

15 London Road, Shenley
www.tomten.co.uk Tel. 01923 856264



The Oakridge Practice Footcare Clinic

HPC registered Podiatrist / Chiropodist
01923 839 796

www.oakridgepractice.com

244, Radlett Road, Colney Street,
St Albans, AL2 2EN

Why live with pain?

Treatments available include:

Sports injuries, Nerve/Sciatica Problems, Neck & Shoulder Pain,
Tennis Elbow, Frozen Shoulder, Hip & Groin Pain, Back Pain,
Arthritic Pains & Rheumatism, Wiplash & Cranial Osteopathy,
Pregnancy Aches & Pains.

Radlett
Osteopathic Clinic

Maria Matthews
New Road, Radlett WD7 8LX
tel: 01923 852259
web: www.radlettosteopathy.co.uk



96 Watling Street, Radlett, Hertfordshire WD7 7AB

Tel: 01923 857338 Fax: 01923 857778

Website: www.radlettphysiotherapy.co.uk

Email: info@radlettphysiotherapy.co.uk

In pain? Don't be.

Come and see our specialist physiotherapists who can
get you back to an active, pain free life.

Physiotherapy treatment for:

- Neck and back pain
- Muscle and joint pain
- Sports injuries
- Whiplash
- Headaches
- Arthritis and chronic conditions
- Work-related injuries

Additional Services:

- Pilates classes
- Over 60's fitness class
- Post op rehab
- Metafit classes
- Sports massage

Ken Hodson

Local Computer Hardware & Software Repairs
Upgrades and Advice for Home and Business

Ken Hodson Computer Services Ltd.

115 Tassell Hall, Redbourn, Herts. AL3 7JE

T: 01582 794723 M: 07974 156743

Email: enquires@kenhodsoncomputerservices.co.uk

www.kenhodsoncomputerservices.co.uk

- No fix, no fee for all repairs - you have nothing to lose.
- Low hourly rate.
- Most repairs carried out in your home, if not the computer will be picked up and delivered back to you.
- Upgrades of hardware and software.
- Friendly training and instruction available in plain English.
- Problems with Windows / Applications / Games / Internet / networks fixed.
- Advice given on upgrades - many older computers can be upgraded at a fraction of the cost of a new machine.

INDEPENDENT, BESPOKE VETERINARY CARE



Ample Parking, Friendly Staff, Dog and Cat Waiting Rooms
Free New Kitten/Puppy Checks, Dental Checks and Weight Clinics

Modern Facilities in
a Traditional Setting

@ The Red Cow, 107 Radlett Road, Frogmore,
Herts AL2 2LA www.halianvet.co.uk 01727 874700

WRENS ELECTRICAL

DOMESTIC AND COMMERCIAL
ELECTRICAL CONTRACTORS

Lighting Heating Sockets • Distribution Boards Inspection
Fault Finding Electrical Reports • L.E.D.'s T.V. Fuse Boxes
Part P Regs Immersion heaters • 3-phase Installations
Oven repairs • Cat 5/6 cabling NICEIC test and inspect



RADLETT 01923 854907
HARPENDEN 01582 762435
www.wrenselectrical.co.uk
email: martin.wren@sky.com

COMPLETE
REWIRES
& ALL ASPECTS
OF ELECTRICAL
WORK
UNDERTAKEN



CALL US FIRST FOR BEST PRICES

FULLY TRAINED LOCAL LOCKSMITHS
(WE ARE NOT A CALL CENTRE)
• Lock Outs • OAP Discounts • Boarding Up •
• Security • Consultants • Police Vetted •
Fast Response Times -
Usually within Half An Hour
24 Hours 7 Days A Week No Call Out Charge

St Albans Harpenden Radlett Redbourn
01727 400 012 01582 206 399 01923 375 234 01582 206 008

PHILLIMORE COURT COMMUNITY HALL AVAILABLE FOR HIRE

- Parties
- Classes
- Receptions
- Fully Equipped Kitchen
- Meetings
- Disabled Facilities
- Parking

Phillimore Place, RADLETT
Herts WD7 8NN

Enquiries: Tel. 07776 162261

TJA

Independent Financial Advisers

Tremellen Jeffrey Allan Limited (TJA) is an independent firm
of financial advisers, based in Radlett since 1999.

Whether you are looking to conduct a full review of your finances,
or are interested in a specific area of financial planning, our advisers
will help you make decisions that are right for you.

The services TJA provide:

- Retirement Planning
- Business Financial Planning
- Life Financial Planning
- Investments
- Life Assurance
- Taxation

For a free initial consultation, without obligation please contact us at:

Tremellen Jeffrey Allan Limited
137 Watling Street, Radlett, Herts WD7 7NQ

Tel: 01923 333199

Email: info@tjal.co.uk Website: www.tjal.co.uk

Authorised and regulated by the Financial Conduct Authority

The Friends of Care Homes

In Concert with Families, Friends and Carers
Supporting Families and All Who Care for Those with Alzheimer's and Dementia,
including all residents in Care Homes, Assisted Living Accommodation, our
Seniors, the Lonely and the Isolated, Everyone Welcome - We are here for YOU!

At Phillimore Court Community Hall
Phillimore Place, Radlett, Herts WD7 8NN

Only £5

We Offer **Live Entertainment Every Sunday**,
Games, Sing-alongs, Tea/Coffee, Cakes & Sweets.

Plus a Complimentary Sherry on Arrival.

Finishing With Our Ever Popular **Raffle. 3 to 4.45pm**

Can't Get To Us On A Sunday?
Ask About Our Bus Service

Why Not Join Us?
You Know You
Want To!!

The Friends Producing WEEKLY FUN EVENTS
Inside and outside of care homes

Call Us on 01923 289890 or email: info@friendsofcarehomes.com
or visit our website www.friendsofcarehomes.com



Please recycle
responsibly

Paper used is from
well-managed/sustainably
managed forests



Designed and Printed by Caprin Printers

Unit 2, Park Industrial Estate, Frogmore, St. Albans, Herts, AL2 2DR.

T: 01727 872 021 W: www.caprin.co.uk

For all your print needs - give us a call!