



ALDENHAM PARISH COUNCIL

NEWSLETTER JUNE 2020

Dear All

This newsletter is to bring you up to date with what has been happening in the Parish over the last month.

The Annual Meeting of Aldenhams Parish Council was held via zoom on Monday 26 May. This is the meeting where we choose the Chair of the Council and the Chairs of our subcommittees.

We were sorry to learn that due to his work commitments for the NHS our Chair, Councillor Garry Walton, decided to stand down from the Council after many years. We thank Garry for everything he has done for Radlett, particularly in relation to our open spaces and sports facilities.

Councillor Estelle Samuelson and I were elected as joint Chairs of the Council and we hope that we will serve you well over the next twelve months. Both of us have lived in Radlett for many years and have a keen interest in preserving and enhancing our local area. Many of you will already know Estelle as, amongst other things, she has been Chair of the Community Development Committee and it is this committee we must thank for the Summertime Activities for children and the Winter Fair, both popular activities in the Parish calendar.

Thanks must go to the outgoing Chair of APC's Planning Committee, Councillor Saleem Khawaja, for his hard work and commitment over this past year. Going forward, Councillor Mark Cherry will take over this role and with his experience in planning matters this should be helpful when considering applications.

Councillor Dermot Wickham will Chair the Open Spaces committee and no doubt we can expect to see our Parish owned land continuing to look well-kept and maintained in the coming months.

We wish them both luck in their new positions of responsibility.

Lockdown restrictions are now being cautiously eased. We know that concern has been expressed about the closing of parts of the slip road for social distancing at Newberries Parade. We want to assure you that our Borough and County Councillors are liaising with the County traffic team to endeavour to put in place a scheme that balances residents safety with parking for those wishing to shop locally and support our retailers.

We hope that, with many residents now discovering the more picturesque parts of Radlett on your daily walks, you will join us in thanking the Parish Council staff, in particular the Open Spaces team, for maintaining our community-owned land so well.

By the time you read this Newsletter, some of the children will have returned to school, and we do hope that the remaining summer term goes well for them.

No doubt the summer holidays will be more restrictive this year but nevertheless, we wish you all good health during this time.



Councillor
Estelle Samuelson
*Joint Chair of the
Council*



Councillor
Jackie Lefton
*Joint Chair of the
Council*



Aldenhams Parish Council Newsletter



Community Development Committee Update

I want to take this opportunity to up-date you on matters that the Community Development Committee (CD) members have been discussing at this time.

First, I would like to thank Councillor Ben Evans, who has stood down as Vice-Chair of this Committee, for all his support to me and hard work and dedication over the past years. I am delighted that Councillor Alison Robinson has agreed to take over this position of responsibility going forward.

As you can imagine, many of the regular events that the CD Officer would be working on have had to either be put on hold or cancelled completely due to Coronavirus.

Unfortunately, it looks likely that the Summertime Activities, that usually take place in August during the school holidays, will not be able to happen this year. As social distancing is still in place and only very few year groups have returned to school, it would be difficult to arrange this in a safe way at the moment.

As far as the annual Winter Fair is concerned, members have decided that for the time being, this event should be put on hold and revisited at our next CD meeting in September. If there is any chance of holding some kind of an event, then APC will endeavour to do this. In particular, we hope there might be the switching-on of the Festive Lights and the Christmas tree at The Radlett Centre.

2021 will mark 100 years since the Phillimore Recreation Ground was presented to Aldenhams Parish Council in memory of Robert (Bobby) Phillimore by his wife Lucy (Lion) Phillimore. The gift was conditional on the open space being made into a 'children's playing ground and a place where older people could sit down in comfort'. Hence a

covenant was imposed on the land. APC are setting up a working party to consider ways of marking this occasion with a celebration next summer. If you would like to know more about this and want to get involved, then please contact CD Officer, Manisha Kotecha, on community@aldenhams-pc.gov.uk who will be pleased to hear from you.

At times like this, it is important that the Parish Council communicates with its residents and businesses as much as possible. Therefore, you will find information on APC's website (www.aldenhams-pc.gov.uk) which we hope you will find useful during this unprecedented time for all. In the meantime, we will continue to produce a Newsletter that will be uploaded onto the website and sent out by email to as many individuals, societies and organisations as possible. The Around Radlett magazine will be published in a hard copy at a later date when members are able to meet up to produce and edit it.

The CD members remain committed to bringing the community together for exciting and interesting events as soon as the Government allows us to do so.

Meanwhile, I would like to take this opportunity of thanking everyone for looking out for each other these past months and for observing the social distancing rules so conscientiously in order to keep the Parish of Aldenhams as safe as possible.



Councillor Estelle Samuelson
Chair of Community Development Committee



Aldenham Parish Council Newsletter



Planning Update

Following the Annual Meeting of the Parish Council on the 26 May 2020, I have been elected Chair of the Planning Committee. I have sat on the committee for the last year and have a good understanding of the planning process, gained during a career in the property industry.

It is worth highlighting that Aldenham Parish Council is not the decision making authority on planning applications within the Parish: this function is undertaken by Hertsmere Borough Council. The Parish Council is a statutory consultee on planning applications affecting the Parish, and the Planning Committee gives all applications requiring comment, detailed consideration. Over the next year the committee will continue its work of reviewing and commenting on applications, with due consideration to planning policy and the comments and objections made by local residents.

Much of the planning policy is contained in the Hertsmere Borough Council planning policy documents. However, the Radlett Neighbourhood Plan is an important emerging policy document and if passed at a referendum due before 6 May 2021, will become adopted policy.

Meetings are now held remotely and you are welcome to attend. Those that wish to speak on particular planning applications will be given 3 minutes to do so. If you wish to join a meeting, please get in touch with the Parish Council Manager at manager@aldenham-pc.gov.uk for joining instructions.



Councillor Mark Cherry
Chair of Planning Committee

Open Spaces Update

At the recent Annual Meeting of the Parish Council, I was elected Chairman of the Open Spaces Committee, which also comprises fellow councillors Saleem Khawaja, Helen Jones, Przemek De Skuba and Alison Robinson.



First, I would like to congratulate Open Spaces Team member Gary Hall on completing 40 years of service. An article about Gary will be in the next newsletter.

Tasks recently completed by the team include planting for summer baskets, planting whips at Fir Spring Wood, painting bollards at the Radlett Centre and rotavating vacant allotment plots.

We are lucky to have so much common recreational land in our parish, which understandably has been seeing much greater use during the lock-down and the recent beautiful weather. While most people seem to treat our open spaces respectfully, unfortunately a small minority have been leaving their litter behind. This creates extra work for our staff. May I ask you all please to take away your litter.

Please continue to respect the taping off of the outdoor exercise equipment at Phillimore Recreation Ground; this is not to be used, for the safety of you and others. The children's play area is also still out of bounds.

Please can all dog walkers keep their dogs on leads, to help maintain social distancing.

If you have any comments or questions regarding our open spaces, please contact our Open Spaces Officer, Wendy McLean at openspaces@aldenham-pc.gov.uk.



Councillor Dermot Wickham
Chair of Open Spaces Committee



Let's Get Silly with this summer's Silly Squad!

Fear not, although libraries across Hertfordshire may still be closed, children can still take part in the Summer Reading Challenge this year!

We are encouraging children to join the Silly Squad, an adventurous team of animals, and celebrate books that make us happy and laugh, featuring bespoke artwork from award-winning children's author and illustrator Laura Ellen Anderson.

Due to the Coronavirus, The Reading Agency has redesigned this year's Summer Reading Challenge into a virtual one. Now it is more important than ever to keep children reading over the summer months, and this year's Challenge aims to support parents and carers to do this.

The Summer Reading Challenge started earlier this year, on Friday 5 June.

The launch kicked off with a 'Let's Get Silly' virtual event on the Summer Reading Challenge's Facebook page for the all the family to enjoy. You can still watch the short videos featuring a host of silly readings and family themed activities by celebrities and best-selling authors led by Jacqueline Wilson, Cressida Cowell, Philip Ardagh, CBBC's Sam and Mark to name a few.

The digital challenge platform is now up and running and is FREE for children and their families to join and use, providing a safe and secure sign-up process. This is a great opportunity to develop skills and enjoy reading as a family. To take part this year, log on to the www.sillysquad.org.uk.

Children will be able to set up their own personal reading goals. We are encouraging them to read six books, although this year there is no minimum (or maximum!) number to be read. Also for this year, children may read anything! It can be in

digital or print format from ebooks and e-audio books or books that are already at home. Don't forget we have lots of ebooks and e-audio in our online BorrowBox library (<https://www.hertfordshire.gov.uk/services/libraries-and-archives/books-and-reading/ebooks-and-audiobooks/ebooks-and-audiobooks.aspx>)

Instead of coming into the library to collect stickers, children will be able to record their progress through the Challenge online and unlock virtual rewards as they go. You can also print a certificate at the end. The Silly Squad website will include games, quizzes and downloadable activities to keep everyone entertained at home as well as a book sorter which offers reading suggestions.

Whilst all the staff and volunteers in libraries will obviously miss hearing children talk about their books this year, we are looking forward to reading their reviews on the Silly Squad website www.sillysquad.org.uk



All are welcome to attend our religious services which are being streamed to our website (<https://www.radlettreform.org.uk/>) and our Facebook page (<https://www.facebook.com/RadlettReform>) .

In addition, we have a couple of events that may be of interest to residents.

Monday 29 June 7.30pm via zoom - "Bletchley Park, the Jewish Connection" - a talk by Bletchley Park guide Michael Kushner on this fascinating story. During WWII, the British Secret Service employed over 200 Jewish personnel at Bletchley, many becoming brilliant codebreakers. Cost: £10 from <https://www.radlettreform.org.uk/box-office>

Sunday 5 July 8pm via zoom - QUIZ - a fun intergenerational quiz, £3 per person. Tickets from <https://www.radlettreform.org.uk/box-office>

For more info - please contact the synagogue on office@radlettreform.org.uk



Aldenham Parish Council Newsletter



GirlGuiding Radlett District



Covid19 can't stop Girlguiding Radlett District from "Keeping on Guiding". During the lockdown, Radlett Guiding has continued to offer activities to the Rainbows, Brownies and Guides. Most leaders in the District are still engaging their girls in Girlguiding activities by hosting weekly virtual meetings where the girls are able to engage with each other and enjoy games, crafts and learn essential skills for life, as well as think about their community and keep their promises.

Many of the girls have used the time they have to complete badges relating to first aid, storytelling, science investigation, dancing, nature, aviation, baking, fixing things, mixology, cyber security and painting and lots of other activities.

More than 100 Rainbows, Brownies, Guides and their Leaders joined the world record attempt on 30 April 2020 for the biggest Virtual Camp ever. Members of the Scout and Guide movement around the world took part in #CampAtHome where they had to build a den and sleep in it overnight. The girls had great fun planning their camp outs, making edible campfires (using sweet or savoury treats in the shape of campfires) beforehand to get them in the mood for camping and then packing their bags and designing and building their own unique dens.

Many Brownies cheered up their neighbours by delivering flowers, writing jokes on the pavement and holding toy sales in their garden to raise money for charity. We placed poppies around the war memorial and Woodland Lodge for VE day as well as decorating homes and driveways.

Some members took part in the 2.6 challenge over the weekend of the cancelled London Marathon by doing activities relating to the number 2.6. This earned sponsorship for a variety of charities which would otherwise have lost a vital part of their fundraising.

The members of Radlett Guiding have joined children from around the country drawing rainbows for their windows or on their driveways as well as providing them for a display outside Woodland Lodge in Scrubbits Park Rd.

Girlguiding Radlett District welcomes new members and volunteers. Please contact us if you are interested in learning more. Please contact us via the Girlguiding website or contact me at nicola1.day@hotmail.co.uk



1st Radlett Scout Group in lockdown

1st Radlett Scout Group has continued to offer Scouting to its members during the lockdown. On Thursday 23 April members joined in with a fundraising event called Hike to the Moon, where everyone was encouraged to walk a mile, and add this to the national total to see if Scouts could walk to the moon. This was in aid of the Big Night In with money going to Children in Need and Comic Relief. This date was also St George's Day which is an important day for Scouts as the date they reaffirm their promise every year and many members did this.

The Cub Scouts were not able to attend their planned camp, so did a Camp at Home. This involved them either pitching a tent or building a den if they did not have one, either in their garden or in the house if the garden was not suitable. They then had to pack a bag, take part in a Scouty activity of their choice, help cook and enjoy a camp fire, real or virtual. They found this great fun and shared photos within the group of their ingenious dens.

Then on the 30 April Beavers and Scouts also joined some of the Cubs to Camp at Home as part of an initiative by Northumberland Scouts to get a world record of the most people from around the world camping on the same night. In total 95,000 camped from 68 countries.

The older members are having online meetings every week, but the younger Beaver Scouts have been learning cooking for their Cooks badge and have now all been given seeds and soil to plant and care for to earn their Gardeners badge. All ages are also working towards personal badges.

This shows that despite face to face meetings not being possible during lockdown Scouting can continue thanks to the work of all our leaders, parents and members.

If you would like to get in touch, please email info@1stradlettscouts.org.uk.

Jackie Glover



The Summer Hamper Scheme- Churches Together

The Summer Hamper Scheme, which is now in its fifth year, is currently trying to support local families who are struggling through these difficult times. We have been helping around 20 local families whose children attend St John's and Fair Field Schools. Since circumstances have changed recently, the number of families with children requiring help has risen to 40.

We are supplying families with a weekly hamper containing a mix of non-perishable food and fresh food. Since we can no longer buy in bulk from supermarkets, we have been using local suppliers to help us with the fresh food. We rely on donations from members of our community.

If you would like to make a financial donation:

Account name: Churches Together at Barclays.

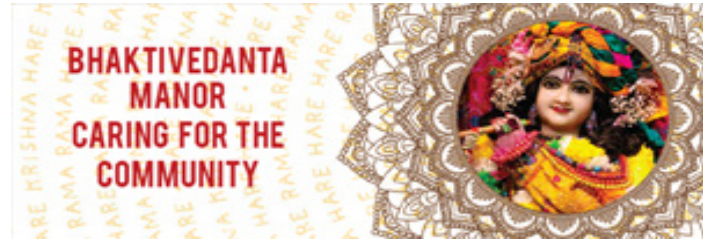
Account Number: 00816213

Sort code: 207409

If you would like to donate non-perishable food items - tins, cereals, biscuits, pasta etc since the churches are closed, please leave at Cath Parkinson's Pearwood Watford Rd, Radlett WD7 8JZ texting to say you have left items by the door on 07766 750453.

Cath Parkinson

We hope to bring you news of what other faith communities are doing to help their members very soon.



As the lockdown wears on I have diverse feelings. I deeply share the grief of those who have lost loved ones, and the anguish of those who are financially and emotionally distressed. I'm also extremely thankful to the many selfless people who continue to help others in their time of need.

At the same time, I relish how bicycles and pedestrians have replaced formerly frenetic traffic. And I'm thinking about how, just as spring roots burrow deep into the earth, sacred texts keep us ever-freshly grounded in reality. By making this reality present in our lives through sadhana – daily devotional activities – we'll feel our spirits uplifted even in such bizarre circumstances as a long, countrywide lockdown.

Even now, cloistered in our various homes, every single act we do for the pleasure of the Supreme Lord Sri Krishna helps us move closer to Him. And every single act will gradually evoke our love for others, for nature, and for our self too – all grounded by firm and deep scriptural roots.

At Bhaktivedanta Manor our interest is in your material and spiritual wellbeing. Please know that we are here to serve you. We are beginning to look at getting the temple operations up and running for the next phase following the Coronavirus lockdown with the long term outlook of opening the temple to the community and the public.

Kindly connect with us to find out more. We'd love to hear from you!

Please take good care and stay safe.

Visakha Dasi

President, Bhaktivedanta Manor



Aldenham Parish Council Newsletter



At Communities 1st, we are committed to improving the quality of people's lives and our vision is 'to work towards

building inclusive, empowering and vibrant local communities'. COVID-19 has changed the way we work considerably and since March, we've gone from providing around 25 projects and services, to focusing on responding to coronavirus. The response to the coronavirus outbreak from people in the area has been nothing short of amazing.

We've been inundated with volunteer requests since March. We're now working across Welwyn, Hatfield, Broxbourne and East Herts with Welwyn/Hatfield CVS and Broxbourne & East Herts Volunteer Centre in addition to our home in St Albans and Hertsmere. We now have around 4,000 people who are registered with us, 1,300 volunteers who have been vetted and over 850 are actively involved with us. Others have been introduced to local community groups that have requested support from us.

Requests are coming in daily from members of the community who require support and so we have a pool of volunteers ready to be allocated when required. To put this all into perspective, in a two-

week period at the end of March, we received as many requests to volunteer as we would usually get in an entire year. Our role has been and will continue to be to co-ordinate this huge voluntary effort by engaging with our community and directing help where it's needed most.

The help our volunteers provide includes providing shopping for vulnerable people, collecting prescriptions or even just calling them for a regular chat. What we're seeing most of all though, is that it doesn't matter too much the exact way that help is given. The most important thing is that we get the same outcome: the person in isolation doesn't feel so alone any longer - and they have that vital reassurance that they are being looked after by someone.

If you'd like to register as a volunteer, please click

<https://www.communities1st.org.uk/COVID-19-community-signup>

Or call Communities 1st on 020 3940 4865 between 1pm and 3pm, Monday to Friday.

If you need support, please fill in our form <https://www.communities1st.org.uk/COVID19support>

or call Communities 1st on 020 8207 5115.



RADLETT BOWLS CLUB

Radlett Bowls Club is compiling a list of people who are interested in learning about the game of Lawn Bowls ready for when the current distancing situation is resolved.

If you are interested, please send your name and email address to radlett.secretary@gmail.com.

Your email will be acknowledged with information about the Club, and we will contact you again when we can reopen to new members.



Aldenham Parish Council Newsletter



Get involved in local community project – Hugs by Post!

Hertfordshire Independent Living Service (HILS) is a local charitable social enterprise, providing caring services to help people stay happy, healthy, and independent at home for as long as possible.

During the lockdown, we were delivering hot lunches to almost two thousand older and vulnerable people every day. Older people have been one of the hardest hit groups. With many living alone and being part of a clinically vulnerable group, they have been left feeling disconnected, isolated, and anxious during this time.

As lockdown begins to ease, many of us will start to see our family members and friends outside again. Unfortunately, many of HILS' clients are still vulnerable, and therefore still have to stay at home.

To help combat the effects of social isolation, HILS has launched the 'Hugs by Post' campaign and are inviting children to draw and send in pictures.

If you would like to get involved, send a colourful drawing with an uplifting message to the address below. HILS will distribute to our clients so that they know people are thinking about them and that they're not alone. Please include your name, age and where you are from.

You can send your creation by post to:

Hugs by Post, Unit 16 Green Lane One,
Blackhorse Road, Letchworth,
Hertfordshire, SG6 1HB

You can also take it to a number of drop-off points in Hertfordshire. To find a nearby drop-off point, and for more information and colouring in resources, go to HILS' website:

<https://hertsindependentliving.org/news-media/providing-comfort-to-isolated-older-and-vulnerable-people-with-a-hug-by-post/>

Scrubs during Lockdown

During lockdown, it became apparent that some of us would have a bit more time on our hands.

There was a huge call on social media for people to make scrubs for the NHS and also care homes. I put my name forward to a lovely lady who was coordinating seamstresses to do the work.

Sara Shamplina in Borehamwood called me and asked me to make 4 sets of scrubs. Many companies had donated fabric and patterns in order to do this.

When I collected my package, I cut out the pattern and then the 4 sets of scrubs.

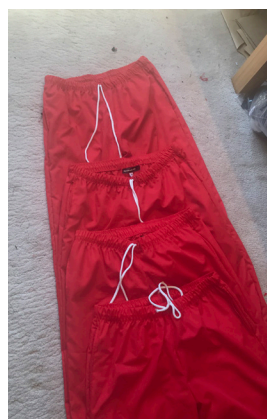
They took about 4 days to make. We even had little labels to sew in the scrubs which said "hand made with love". These sets of scrubs went to a care home in Watford.

A few weeks later I then made another set of 4 scrubs that went to Chase Farm Hospital. I was one of thousands of people who helped make the scrubs for all the health workers on the front line.

It was so satisfying and such a good cause.



Cllr Alison Rubinson





Aldenham Parish Council Newsletter



RADLETT LAWN TENNIS AND SQUASH CLUB HAS RE-OPENED FOR TENNIS

For members and non-members of all ages!

Tennis is now available to members and non-members (booking essential). To encourage our community to exercise we have introduced a "Lockdown Community Membership" especially for those who are not already tennis members but may wish to pay and play.

Membership requests can be made through this link: https://rltsc.mycourts.co.uk/member_registration.asp

or for more information on tennis or squash, please email: admin@rltsc.co.uk or call 01923 854523

WE LOOK FORWARD TO SEEING YOU SOON!

Unfortunately, for the time being, our squash courts and club house will remain closed.

Please note: strict Club and LTA playing guidelines are in place and must be adhered to at all times.



Tabard RFC have been supporting A Plate for London over the lockdown period and continue to do so. A Plate for London is a not for profit organisation set up at the start of the pandemic to support those most in need throughout London. The founder was due to be opening a hospitality space this Summer, but plans had to be put on hold.

During the Easter holidays we supported Tower Hamlets council in producing 12,000 meals to feed families with children on free school meals, and to do this we opened up restaurants that would otherwise have been closed and got chefs back to work. Members of Tabard RFC in Radlett were pivotal in making this happen. We had plenty of volunteers in London, but not many had cars. So we mobilised a few people from Tabard to drive to London and move the food

from the restaurants to the hubs. The use of vans and cars from club members became a slick process.

As one of the directors of the organisation and a member of the Tabard RFC committee it seemed sensible to use Tabard. As of the middle of May we have started using the rugby club as a packing centre, to produce recipe boxes to send out to families in Hackney. The feedback we received from foodboxes that are going out containing enough food for a week was that people don't know what to make with the ingredients, so we decided to produce boxes with recipes for 7 days along with all the ingredients required for this. In Week One we fed 16 families a total of 532 meals. This has proved to be a very cost effective way of using our funds to feed as many people as possible.

This initiative is only going to grow, as unfortunately as some of us start to return to normality, for many this is a new normal. Food poverty is growing at an unprecedented rate. The hospitality and entertainment industry is one of the worst affected, so our intention is to do whatever we can to support the people who have fed and entertained us over the years for as long as we can.

If you would like to volunteer with the Recipe Box production at Tabard RFC please get in touch with laurajo@aplateforlondon.org.

If you want to donate, go to

www.aplateforlondon.org.

To find out more about what we're doing follow us on Instagram.

Finally, to support A Plate for London, The Great Feast of London will be taking place over the weekend of the 3rd of July. Proceeds will go to feeding more people. If you want to know more, please sign up at

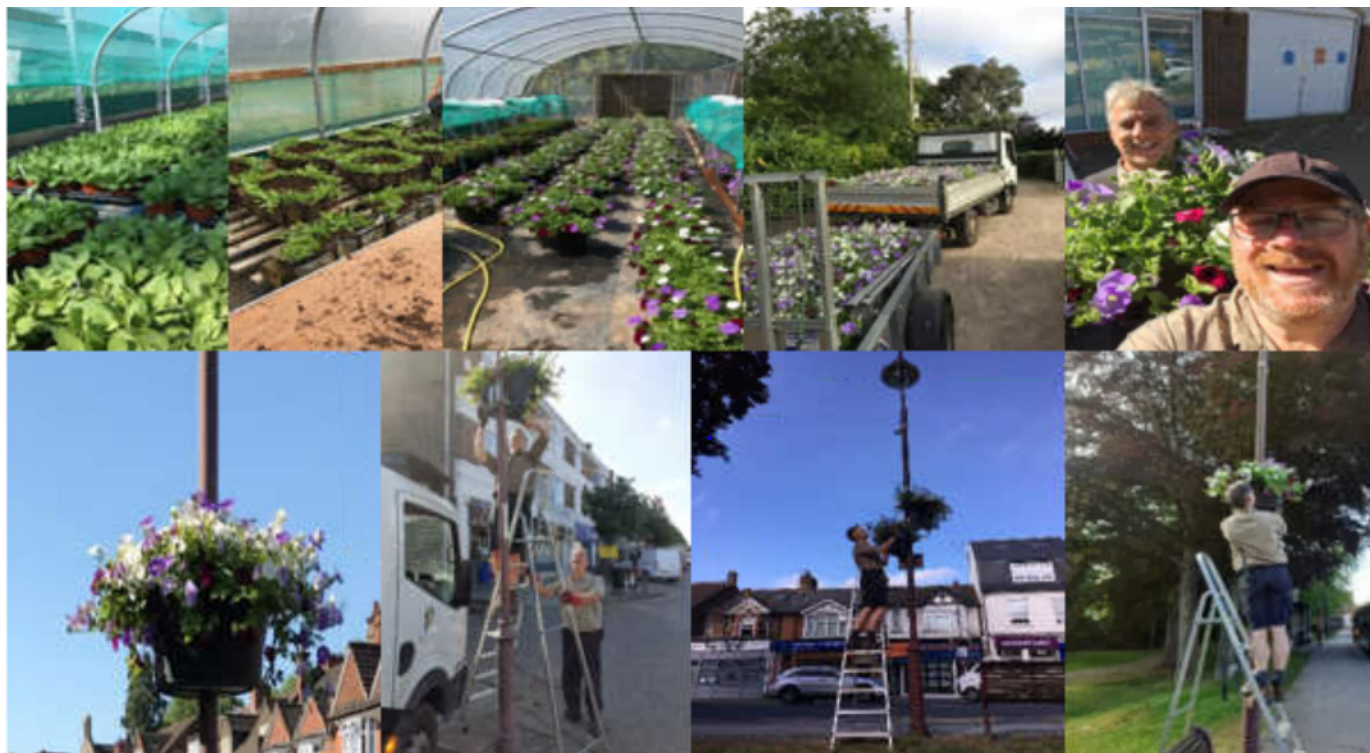
www.greatfeast.com

Laura-Jo Pearce

Ladies Captain and Committee Member

Tabard RFC

Radlett Floral Display



The hanging baskets and floral displays in Radlett High Street, the Radlett Centre and Tykeside, which you can now see, are the result of many months of planning and preparation by the Open Spaces Team.

The cycle begins in the autumn when the previous year's displays are taken down. The containers are cleaned before they are stored over the winter while the planning for next year's plants and colour scheme begins. In October 2019 we ordered 360 Pelargonium and 1,008 Petunia Surfinia plug plants for delivery in spring 2020.

The plants arrived in March and they were potted up in the Aldenhams Parish Council's polytunnel at Phillimore Recreation Ground Allotments. Here the Open Spaces team regularly watered them and, during the late spring monitored the overnight temperature, and covered them with fleeces on the colder nights

When the risk of frost has passed in May, it is time for them to be transferred to the hanging baskets and containers for the displays.

The hanging baskets are prepared at the polytunnel and taken on the council's vehicles to the village where the team position them onto the lampposts on the High Street between the Radlett Centre and

The Drive, and use a hoist to raise the heavier baskets at the War Memorial.

The other plants are placed directly into the baskets and flower beds at the Radlett Centre, and into the towers nicknamed 'the daleks' at Tykeside (the green area on the left as you enter Radlett from Park Street).

The containers have irrigation channels to help retain water which is replenished by the Open Spaces team at least once a week throughout the summer. Then the cycle begins again.

We hope that you enjoy the display!

