



# Around Radlett

SUMMER/AUTUMN 2016

# 111

The Newsletter of Aldenham Parish Council • [www.aldenham-pc.gov.uk](http://www.aldenham-pc.gov.uk)



The painting on the front cover of this edition is **'Flower Meadow and Bee Hives'** by **Mitzie Green**.

Mitzie teaches watercolour classes in Harpenden and Berkhamsted. Acrylic workshops are held in Hemel Hempstead, the next is on 9 July. Visitors are welcome to visit her studio in Berkhamsted by appointment or during her Open Days held in June and September. To contact Mitzie, email [artist.mitziegreen@gmail.com](mailto:artist.mitziegreen@gmail.com) or tel. 01442 862978 or visit her website at [www.mitziegreen.co.uk](http://www.mitziegreen.co.uk).

Around Radlett would be very grateful to receive any paintings or photographs of local scenes. Please contact [parks@aldenham-pc.gov.uk](mailto:parks@aldenham-pc.gov.uk).



Councillor  
Neil Payne

## Chairman's Message

Work is continuing at Phillimore Recreation Ground ('the Rec') following the completion of the new toilets. A new slide has been installed in the children's playground, following a generous donation by Tesco and grants by our County Councillor and Borough Councillors. We are grateful to all concerned for their generosity. We are glad that Paula's Deli will be operating up at the Rec again this summer, as her facility proved very popular last year. The Parish Council is currently planning to upgrade the car park at the Rec later in the year. In addition, we are looking to improve the car park and external fencing at the allotments.

The **Annual Parish Meeting** on 9 March was attended by a large number of residents, who were there primarily to receive an update on the Neighbourhood Plan and also a presentation by the Chief Executive of Hertsmere Borough Council (HBC), Dr Donald Graham, on the proposed Newberries car park development.

Good progress has been made on the **Neighbourhood Plan**. The Character Assessment has been completed. This is an outstanding piece of work, carried out by Dr Garyfalia Palaiologou, under the supervision of local resident Professor Laura Vaughan. It has enabled the Steering Committee to draft a number of policies in relation to Housing and Design, which we hope will be in the completed Neighbourhood Plan.

The proposed **Newberries Car Park development** has caused some significant disquiet amongst certain residents. The Parish Council has been in close contact with HBC in order to ensure that any development in the car park is in the best interests of residents. The particular concerns that the Parish Council has include the need to ensure that the number of parking spaces available for residents is increased, that an 'Improvements' brief is prepared for the car park itself, Tykeswater and the surrounding area, and that the junction onto Watling Street is reconfigured.

The Parish Council has asked HBC to list the former Post Office building as an 'Asset of Community Value', in order to assist in maintaining the building for future community use.

In celebration of HM the Queen's 90th Birthday on 21 April, in early March a few stalwart residents, led by Stuart Nagler, carried out a **'Clean for the Queen'** exercise in Newberries Car Park and surrounding area. On 23 April, to commemorate the Birthday itself, Hazel Ward organised a lunch for 80 people at the Phillimore Community Centre. On 12 June, during the weekend of the Queen's official birthday, a service was held at Christ Church, followed by a party on the Church Field, to celebrate the Queen's 90th birthday.

May I offer my thanks and best wishes to the new organising committee for the **Radlett Festival**, which is being held on 26 June at the Rec.

In the last month or so, two of the Parish Council's staff, Claire Fletcher and Lucy Jackman have left us for pastures new. I would like to take this opportunity to thank them for their service to the Council, and offer them best wishes for the future.

**Councillor Neil Payne**  
Chairman  
Aldenham Parish Council

## What's On...

Remember to check the Aldenham Parish Council website for all up to date events and meetings  
[www.aldenham-pc.gov.uk](http://www.aldenham-pc.gov.uk)



**Saturday 25 June from 12-noon to 3pm**



All the fun of the **Summer Fair**. St John's School, Gills Hill, Radlett. All Welcome.

**Sunday 26 June from 11am to 5pm**



**Radlett Festival 2016**. Phillimore Recreation Ground, Gills Hill, Radlett WD7 8JJ. See pages 7 and 12 for more details.

**Wednesday 29 June 1pm for 1.30pm**

**NSPCC NSPCC Summer Lunch.** The

Marquee, Shenley Cricket Centre, Radlett Lane, Radlett, WD7 9DWQ. Guest Speaker Dame Jenni Murray, DBE. Tickets £30 per person includes a 3 course lunch with wine. Tickets from **Jeannie Hinds** on 020 8953 5005 or 07881 387979

**Saturday 2 July from 12-noon to 5pm**

**Billy Fest BBQ**, Bouncy Castle, Stalls and lots more, entrance £2 per family.

**7pm to Midnight Billy Fest Disco**, Entertainment, Raffle, Auction. Entrance £10. All proceeds from both events to Cystic Fibrosis. For details contact **Nicky** on 07900 271453.

**Tuesday 19 July at 2pm.**

**Radlett Flower Club**. St John's Church,

Gills Hill, Radlett. A demonstration entitled **'Night Out at the Movies'** by Vijay Bhatia. Visitors welcome £6.

**Tuesday 20 September at 2pm**

**Radlett Flower Club**. St John's Church, Gills Hill, Radlett. A demonstration entitled **'Wish You Were Here'** by Carol Ferris. Visitors welcome £6.

**Tuesday 18 October at 2pm**

**Radlett Flower Club**. St John's Church, Gills Hill, Radlett. A demonstration entitled **'Mists of Mellow Fruitfulness'** by Graham King. Visitors welcome £6.

**Sunday 27 November**

**Mitzvah Day**. See Aldenham Parish Council's website and the next issue of Around Radlett.





the radlett centre  
events are on page 10



# Summertime Activities For Kids

Activities for young people every Tuesday  
during August at Phillimore Recreation Ground

This year Aldenham Parish Council will be holding regular activities for young people at Phillimore Recreation Ground in Radlett throughout the month of August.

Instead of a one-off event there will be five Tuesday activity sessions starting on Tuesday 2 August. Hopefully this will give a chance for children of all different ages to come together to participate in a variety of sports and entertainment in a safe and secure environment.

'Sure Start' will be entertaining the very little ones aged 0-5 years in the 'Children's Play Area' from 10am to 12 noon. (See the flyer right).

Child UK will put on a host of activities for those aged 6+ starting at 10.00am and for those aged 12+ from 12.30pm. (See the flyer right).

We would like to encourage as many children as possible to take advantage of these free organised activities. This will be a good opportunity for those taking part to make new local friends, at the same time as having lots of fun in the sun!

Please see the flyer for all the times and information you require, or telephone Aldenham Parish Council on 01923 856433.

## Summertime in Phillimore Recreation Ground

Gills Hill, Radlett, WD7 8AL

### Every Tuesday throughout August

**Sure Start will be providing MESSY PLAY  
activities 0-5 years - 10am to 12noon**

Fun-filled outdoor sessions for children and their parents/carers.

Activities will encourage and support your child's development.

Children's Centre staff will support these sessions.

Please dress your children suitably for messy play.

You must stay with your child for these sessions.



**Child UK will be providing activities for children 6+  
6-12 year olds - 10am to 11.55am**

**children 12+ Years - 12.30pm to 2.25pm**

Ultimate Frisbee, volleyball, netball, dodgeball,  
football plus much more (important notices below)

With regards to leaving children during the CHILD UK sessions, this is up to the parents/carers.

You can either leave your children in CHILD UK's care or you are more than welcome to stay and watch.

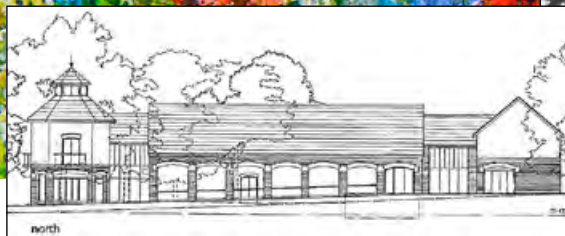
We have a register and take contact details so that if a child gets upset or wants to leave the session we will contact the adult to come and pick your child up.



Hosted by  
Aldenham  
Parish Council

[www.aldenham-pc.gov.uk](http://www.aldenham-pc.gov.uk)





The proposed new Radlett Centre. Drawing by Eric Askew and Partners.



Work on the Radlett Centre in progress in the autumn of 1994.



Pupils of St John's Infants School carefully survey the progress of building work in March 1995.

## Happy 20th Birthday to the



## the radlett centre

In June 1992, Aldenham Parish Council reported it had acquired the property at 3 Aldenham Avenue adjacent to the present Council offices at 1 Aldenham Avenue. The purpose of the acquisition was to demolish both properties and build a new Radlett Centre that would



Aldenham Parish Council Offices at 1 Aldenham Avenue in 1992. Drawing by Ted Barker.

accommodate an enlarged library (three times the size of the existing library), larger council office accommodation, a multi-function auditorium and meeting rooms.

The purchase of 3 Aldenham Avenue was a very bold step for any Parish Council with a population of just under 10,000 to take. To build the multi-purpose Centre would involve working and negotiating very carefully and closely with all three tiers of local government – Hertfordshire County Council (HCC) on behalf of the library, Hertsmere Borough Council (HBC) for planning and financial input, and Aldenham Parish Council (APC) as the developers and land owners of both sites.

By March 1993, negotiations between HCC, HBC and APC were well advanced. An exhibition of the proposed plans was put on display at 3 Aldenham Avenue for public viewing and comments.

The Centre was built in two stages. Phase One, the demolition of 3 Aldenham Avenue and the erection of the new library, which would temporarily occupy the ground floor only leaving the first floor available to house the Parish Council offices. Phase Two, the demolition of 1 Aldenham Avenue and the erection of the new council offices, auditorium and meeting rooms.

By March 1994, financial agreements had been reached. The library would be owned and managed by HCC. HBC having accepted the freehold of the sites, would be responsible for the building and equipping of the Centre to an agreed specification. The Centre would then be leased back to APC by HBC for 125 years at a peppercorn rent. The capital for the purchase of 3 Aldenham Avenue had been borrowed from HBC. To return the payment of the loan APC would sell Radlett Hall. The hall was built over 100 years ago as a multi-purpose local community facility, today it is the home to the Radlett United Synagogue.

A Radlett Centre Trust would be created. APC would lease the auditorium and public area to the Trust with the exclusion of the Parish Council offices.

The total cost of the building amounted to £2.2 million and to finish the building to a high specification a £75,000.00 shortfall was recognised. An Appeal Committee was set up in September 1995 and a money raising effort for the purchase of such items as stages curtains, technical equipment, tables and chairs was launched. Initiatives to 'buy a brick for £5' and 'buy a seat for £75' were put in place. Within a short space of time local organisations, groups and residents had raised over £40,000.

In June 1995, the foundation stone was laid. For Douglas Hicks, Chairman of APC, this was a particularly rewarding moment. The new Centre had been his vision. He had long recognised the need for better facilities in Radlett and surrounding areas, and had worked tirelessly for over ten years to achieve it.

On the 26 and 27 April 1996 a grand opening was held.

Jan Adams



APC Chairman Douglas Hicks (centre), the Mayor of Hertsmere Borough Council Jim Kentish (left) and Chairman of Herts County Council Michael Colne (right) lay the foundation stone in June 1995.



**DNW**  
Mayfair

London Specialist Auctioneers

Jewellery Medals Coins Banknotes

**Regular Valuation Days**

at

**The Radlett Centre**

Experienced specialists available  
by appointment to offer confidential  
valuations *free of charge* with a view  
to a possible sale in our Mayfair rooms

Please ring 020 7016 1700  
for an appointment or email  
jewellery@dnw.co.uk

[www.dnw.co.uk](http://www.dnw.co.uk)





## The Radlett Centre now

Twenty years on, there is no doubt that the Radlett Centre has lived up to, if not exceeded, the early ambitions of Aldenham Parish Council. It is still the home for the main local societies and groups, such as The Radlett Players, Radlett Light Opera, Radlett Music Club and the Radlett Art Society. All of these organisations have thrived and grown, along with the venue itself in the past twenty years and are more popular than ever.

Many people assume that our activities are confined to those listed in the Centre's Events Guide, which goes to every household in Radlett plus everyone on our mailing list. A database of around 20,000 people. In fact, the brochure only tells half the story as there are a great many other private hires and events that take place in the building that are not listed. Bookings are taken up to two years ahead, and as of the time of writing, there are almost no weekend dates available until March 2017. The Radlett Centre operates seven days a week and it is not unusual to have seven different events in a seven day period. This can include professional shows, amateur shows, local schools, charity events, community events, concerts, art lectures, Bar Mitzvahs, childrens events, lectures and drama workshops.

The professional programme has also gone from strength to strength and really does include something for every taste. The current programme includes Vienna Festival Ballet, a staged version of Jane Austen's 'Emma', the Noel Coward classic 'Hay Fever', an Old Time Music Hall, the 'WestEnders' with a night at the Musicals, Eurovision favourites Bucks Fizz, Big bands such as The Pasadena Roof Orchestra and straight from the West End, this year's

Olivier Award winning show called 'Show Stopper'.

Many big name comedians have played the Radlett Centre to try out material for their upcoming tours. This gives our audiences a unique opportunity to see some of their favourite comedians in a more intimate setting. Recently these have included Michael McIntyre, Jo Brand, Jack Dee, Jenny Éclair and Sean Lock.

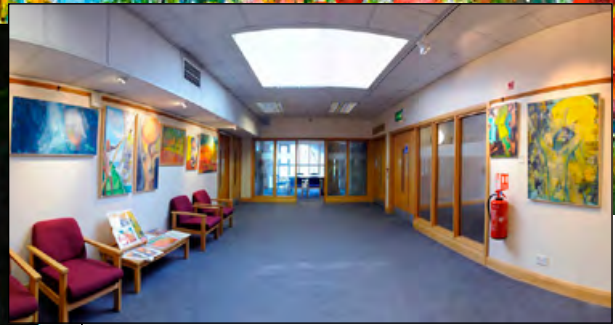
We also have a brilliant range of children's show such as 'The Gruffalo', 'The Tiger who Came to Tea', 'The Snail and the Whale' and 'We're Going on a Bear Hunt'. The hilarious show, 'Aliens Love Underpants', had its premiere performance here in Radlett before going off on tour and into the West End. We are pleased to welcome them back here this summer.

Our flagship productions though are our Christmas pantomime. Working alongside Upstage Productions for many years now, our pantomime run has continued to grow in popularity and plays to around 98% capacity over 40 performances. For this year's 'Jack & the Beanstalk', we actually sold the first ticket in December last year.

As well as the theatre, we have a numbers of meeting rooms that are available for private hire and they are popular with local businesses. The cafebar is very busy during daytimes, as well as servicing our theatre events and we have two gallery spaces with a monthly rolling programme.

If you haven't discovered us yet, I really hope that you will pop in and see us. You will be very welcome.

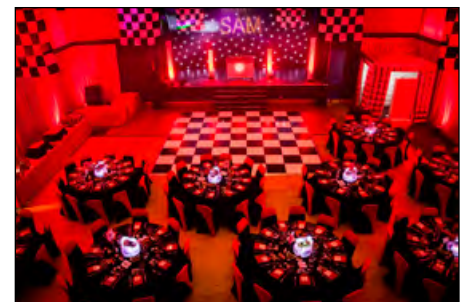
**Greg Dexter**  
General Manager



The Apthorp Gallery.



The Auditorium seats up to 300 people in comfort.



The main function room has seating and tables for up to 180 people, and attached professional facilities.



The Douglas Hicks Room can accommodate up to 50 people.



Meeting Room 1 can accommodate up to eight people.



Meeting Room 2 can accommodate up to 20 people.

'Flower Meadow and Bee Hives' by Mitzie Green (from the cover of this issue)



## Flower Meadow and Bee Hives

Following a visit to Harlow Carr Gardens in North Yorkshire, I was so impressed with the wild flower meadow there that I felt compelled to create something similar here in Radlett. Fortunately for me, Aldenham Parish Council decided to vacate the compound area, adjacent to my apiary and agreed that I could use the area for a wild flower meadow. The site is on a corner plot at the Phillimore Allotments.

I started work on the project in February 2015 and removed all the long grass, stinging nettles and all the other weeds that grow in Radlett. In all 50 barrow loads of waste were removed.

Research on how to make a wild flower meadow told me that the primary requirement is very poor soil. I had struck lucky; the area was mostly

hardcore with a thin layer of soil on top. Following further research I settled on a Boston Wild Flower seed mixture. It is ideal for butterflies, bees and contains over twenty species of wild flowers and no grasses. The area I needed to cover was approximately 300 square metres and needed 1kg of seed costing £130.00.

At the beginning of April, on a windless day, I marked out the whole area with sticks, using kitchen scales and a hand held seed dispenser the sowing began. Unfortunately for me, the April showers did not appear and I had to water regularly. After four weeks the only things visible on the meadow was a flock of pigeons and I begun to suspect that I had wasted a lot of time and money. Two weeks later, as if my magic the whole area turned green and by mid June the plants were well established and in perfect time for the Phillimore Allotments Open Day, held on behalf of the National Gardens Scheme, on Sunday 5 July. The meadow was at it's perfection with a riot of colour and a joy to see.

The flowering continued until the end



(top to bottom): Stuart Thorne's three stages of his flower meadow.



Photos: Dave Oswald

of October and has given us, our many visitors and the bees much pleasure.

If anyone would like to see the meadow in the summer please feel free to contact me on **01923 857502**.

*Stuart Thorne*

## Radlett Art Society

This is a very special year for the Radlett Art Society as it is celebrating its 50th Anniversary Art Exhibition from 2-9 July 2016 (inclusive) at the Radlett Centre. We hope that you will come and visit our work (free entry) and meet some of the artists. The Exhibition will include original works of art in all genres from the Society members and students from two local colleges. There will be many works of art for sale. All works will be entered into a competition with prizes donated by our Patron John Aphorp, who is always encouraging young artists and helping them with their future careers.

Also throughout July the Radlett Society's own Thursday workshop will be exhibiting their paintings for sale in the Radlett Centre's foyer.

The Society continue to arrange lectures throughout the year. All evening lectures start at

7.30 for 8pm in the Radlett Centre:

- Thursday 11 August – Caravaggio.
- Thursday 15 September – Glasgow Boys and Scottish Colourists 1880-1930.
- Thursday 13 October – Grayson Perry.

Visits:

- Sunday 26 June – Harwick Hall, Chesterfield, Derbyshire.
- Sunday 21 August – Oxburgh Hall, Swaffham, Norfolk.
- 18 - 20 September – 3 day tour of the North West.

All details can be found on our website **[www.radlett-art-society.co.uk](http://www.radlett-art-society.co.uk)** or by telephone to Carmen Beal on **01923 854567**.

We look forward to seeing you.

*Carmen Beal*  
Chairman  
Radlett Art Society

# Radlett Festival 2016

**SUNDAY 26 JUNE,  
11am to 5pm**

Greetings! I am delighted to welcome you to our 11th Annual Radlett Festival. We would like to thank everyone for supporting us by coming along to the Festival each year with family and friends, and spending a wonderful day bringing the community closer together.

The Festival is purely reliant on the good nature of volunteers and sadly last year we were not able to raise a committee to run it. As a local boy born and bred in Radlett it was something I did not want to see repeated this year, especially as I had heard so many people talking about what a great misfortune it was that the Festival had not gone ahead in 2015.

Oliver Dowden MP and *Elsa, Anna and Olaf* from Disney's *Frozen* are opening the Festival. *Elsa, Anna & Olaf* will be meeting and greeting the children arriving at the fair to have their photos taken with them in their very own frozen photo booth. So make sure you bring your little Princesses and Princes down for a photo!

The theme this year is *The Circus*, we have roaming circus acts and a magician entertaining the crowd. We also have a circus workshop for everyone to learn some skills with the professionals.

For details of this year's dog show please see our Facebook page.

We have a great Food Court serving food from around the world.

We have over fifty quality stalls selling everything from sweets to jewellery.

The stage this year is run by Chris Baker. We have performing: Radlett Light Opera Society, Katie and Juan, Sarah Lappert, Nick Stephenson, The Maiden, John Beeson and The Craft.

We will also have Radio Verulam broadcasting live all day. Our compères this year are the wonderful Jilly Johnson and Dominic Ingram.

Radlett Horticultural Society are holding a scarecrow competition. If you would like to enter your own scarecrow with a theme of 'Movies' please get in touch at:- [www.radlethortsoc.co.uk](http://www.radlethortsoc.co.uk)

A lot of people work very hard to make this event possible. I would like to thank the team from Bhaktivedanta Manor for their help with the loan of equipment and manpower; the whole team at Aitchisons; Aldenham Parish Council and all the other individuals who help on the day. A special thank you to the hard working committee members who give up a lot of their own time to make sure you all have a fabulous day.

We look forward to seeing you all out on the field on the 26 June from 11am; we have so much for you and your children to do this year you won't want to be late!



If you can help at next year's Festival 2017, please come and see us at our stall or email us on [radlett-carnival2016@outlook.com](mailto:radlett-carnival2016@outlook.com)

**Paul Howard**  
Chairman, Radlett Festival Committee

## Memories of Radlett

*Some eighty U3A members were at a packed meeting to hear four elderly Radlett residents (total ages 367 years) talk about the village and aspects of growing up in Radlett.*

*Edie Oakley, Joan Oakesmonger, Joan Brooks and Peggy Burrell enthralled the audience with their memories and the event was recorded for the archives.*



THE UNIVERSITY OF THE THIRD AGE

**Stuart Nagler**

## Bespoke Framing Service



### Gallery 105

**105 Victoria Street  
St. Albans AL1 3TJ**

**Call Jean Dennis**

**Tel: 01727 833557**

**SERVICED OFFICES AVAILABLE IN  
RADLETT VILLAGE**



**We provide:**

- **Fully serviced self contained office** suites both short and long term licences.
- **Consulting room** available half or full day basis.
- **Onsite parking** and visitor parking.
- **Close to Radlett station.**

**t: 0845 872 4949 e: [info@thecornworks.co.uk](mailto:info@thecornworks.co.uk)**

**Call in and see us at:**

**The Corn Works, Station Road,  
Radlett, Hertfordshire, WD7 8JY**

[www.thecornworks.co.uk](http://www.thecornworks.co.uk)

**RADLETT LAWN TENNIS AND SQUASH CLUB**



**425 Watling Street, Radlett, Herts, WD7 7JG**

**WELCOMES PLAYERS  
ALL AGES AND ABILITIES**

**Membership Enquiries**

[admin@rltsc.co.uk](mailto:admin@rltsc.co.uk)

**01923 854523**

[www.rltsc.com](http://www.rltsc.com)

**4 Glass Back Squash Courts  
11 Tennis Courts (6 Floodlit)**

**Club, District and County Leagues  
Social Tennis & Squash  
Coaching for all Abilities**

**Friendly Bar  
Social Functions  
Club Tournaments**

The Radlett Lawn Tennis and Squash Club, Registered Charity No. 1117605



# ALDENHAM PARISH COUNCIL

[www.aldenham-pc.gov.uk](http://www.aldenham-pc.gov.uk)

To contact a Parish Councillor go to [councillors@aldenham-pc.gov.uk](mailto:councillors@aldenham-pc.gov.uk)

## ALDENHAM EAST



### Councillor Gill Balen

Chairman of the Around Radlett Working Party  
Member of the Planning Committee  
Member of the Community Development and Engagement Committee

\*Trustee of the Gravel Allotments Trust  
\*Trustee of Platt Subsidiary Foundation



### Councillor Viv Charrett

Chairman of the Planning Committee  
Member of the Parks and Open Spaces Committee  
Member of the Finance and General Purposes Committee  
Neighbourhood Plan Steering Group  
Member of the Around Radlett Working Party

\* Aldenham Alms Houses



### Councillor Saleem Khawaja



### Councillor Jackie Lefton

Member of the Planning Committee  
Member of the Community Development and Engagement Committee  
Member of the Finance and General Purposes Committee



### Councillor Neil Payne

Chairman of the Council  
Chairman of the Strategic Planning Committee  
Neighbourhood Plan Steering Group  
Member of the Planning Committee  
Member of the Finance and General Purposes Committee

\*Trustee of the Radlett Centre Trust



### Councillor Lee Wood

Member of the Planning Committee  
Member of the Parks and Open Spaces Committee

\*Members of outside organisation

## ALDENHAM WEST



### Councillor Tony Butwick

Member of the Parks and Open Spaces Committee  
Member of the Community Development and Engagement Committee  
Member of the Strategic Planning Committee



### Councillor Ben Evans

Member of the Parks and Open Spaces Committee  
Member of the Community Development and Engagement Committee

\*Aldenham Alms Houses



### Councillor David Lambert

Member of the Strategic Planning Committee

\*Elstree Airport Consultative Committee  
\*Aldenham Country Park  
\*Aldenham Memorial Hall  
\*Trustee of the Gravel Allotments Trust



### Councillor Estelle Samuelson

Chairman of the Community Development and Engagement Committee  
Member of the Planning Committee  
Member of the Strategic Planning Committee  
Member of the Finance and General Purposes Committee  
Member of the Around Radlett Working Party  
Neighbourhood Plan Steering Group

\*Vice Chairman of the Aldenham and Bushey Community Safety Partnership



### Councillor Garry Walton

Chairman of the Parks and Open Spaces Committee  
Member of Planning Committee  
Member of Finance & General Purposes Committee

\*Radlett Village Institute



### Councillor Chris Wilkins

Vice Chairman of the Council  
Member of the Parks and Open Spaces Committee  
Member of the Community Development and Engagement Committee  
Member of the Strategic Planning Committee  
Member of the Finance and General Purposes Committee  
Member of the Around Radlett Working Party

\*Radlett Village Institute  
\*RAIFA Management Committee  
\*Trustee of the Radlett Centre Trust

## Parish Council Offices

Aldenham Parish Council, 1st Floor, The Radlett Centre, Radlett.  
Tel: 01923 856433

All parish councillors can be contacted through the council office.

Office Opening Hours: **Monday to Friday 10am-2.30pm**  
Parish Council Manager: **Peter Evans**  
Email: [manager@aldenham-pc.gov.uk](mailto:manager@aldenham-pc.gov.uk)

Outside these hours, in case of emergency please contact **07833 251 115**.

Email addresses for the office are:  
Emails for all APC councillors – [councillors@aldenham-pc.gov.uk](mailto:councillors@aldenham-pc.gov.uk)

For **Peter Evans**, Parish Council Manager – [manager@aldenham-pc.gov.uk](mailto:manager@aldenham-pc.gov.uk)

For **Monika Duong**, Accounts Officer – [accounts@aldenham-pc.gov.uk](mailto:accounts@aldenham-pc.gov.uk)

For **Paula Paley**, Planning Officer – [planning@aldenham-pc.gov.uk](mailto:planning@aldenham-pc.gov.uk)

**We welcome two new members of staff:**

For **Manisha Kotecha**, Parks and Open Spaces Officer (also anything relating to 'Around Radlett') – [parks@aldenham-pc.gov.uk](mailto:parks@aldenham-pc.gov.uk)

For **Claire Larkin**, Community Development and Engagement Officer (also events/social media/website) – [community@aldenham-pc.gov.uk](mailto:community@aldenham-pc.gov.uk)



### Oliver Dowden, MP for Hertsmere

Your local MP Oliver Dowden holds regular surgeries around the constituency. If you would like to arrange an appointment then please call **020 7219 6239** or email: [oliver@oliverdowden.com](mailto:oliver@oliverdowden.com)

## Forthcoming Committee Meetings July – September 2016

### July

Fri 1 Strategic Planning  
Mon 4 Planning  
Wed 6 Parks & Open Spaces  
Mon 18 Planning  
Tue 19 Full Council

### August

Mon 1 Planning  
Thurs 4 Community Development & Engagement  
Mon 15 Planning

### September

Mon 5 Planning  
Tue 6 Finance & General Purposes  
Wed 7 Parks & open Spaces  
Tue 13 Full Council  
Mon 19 Planning

Contact the Parish Council office for times of meetings.

## Hertsmere Borough Council

### Aldenham East

Councillor John Graham  
[cllr.john.graham@hertsmere.gov.uk](mailto:cllr.john.graham@hertsmere.gov.uk)  
Councillor Charles Goldstein  
[cllr.goldstein@hertsmere.gov.uk](mailto:cllr.goldstein@hertsmere.gov.uk)

### Aldenham West

Councillor David Lambert  
[cllr.david.lambert@hertsmere.gov.uk](mailto:cllr.david.lambert@hertsmere.gov.uk)  
Councillor Caroline Clapper  
[carolineclapper@hertscc.gov.uk](mailto:carolineclapper@hertscc.gov.uk)

Minutes from the Committee meetings are uploaded to the website once they have been approved and signed by the Chairman of the relevant committee.

Please see all dates, agendas and minutes for Council meetings on [www.aldenham-pc.gov.uk](http://www.aldenham-pc.gov.uk)

## Hertfordshire County Council

Caroline Clapper – [carolineclapper@hertscc.gov.uk](mailto:carolineclapper@hertscc.gov.uk)

## MP for Hertsmere

Oliver Dowden MP – [oliver@oliverdowden.com](mailto:oliver@oliverdowden.com)

## DISCLAIMER

The words written in the articles contained in this edition are the authors own. No responsibility can be accepted for errors or omissions.

All copy correct at the time of going to press. Edited and Produced by Aldenham Parish Council, The Radlett Centre, Aldenham Avenue, Radlett, WD7 8HL



# ALDENHAM PARISH COUNCIL

[www.aldenham-pc.gov.uk](http://www.aldenham-pc.gov.uk)

## Newberries Car Park Development

This article may be slightly out of date by the time you read this, however, it is worth just putting down some of the facts that are known.

If you wish to see the latest then please link to <https://www.hertsmere.gov.uk/newberriescarparkdevelopment>

Hertsmere Borough Council (HBC) owns Newberries Car Park off Watling Street, Radlett. There are approximately 215 car parking spaces (depending on who is counting) and is situated to the rear of the shops in Newberries Parade. There is a wooden walkway from the car park for pedestrians.

HBC have been in discussions with Aldenhams Parish Council (APC) looking at how the parking provisions can be improved in this area. One of the points being that as the surface and general landscape of Newberries Car Park is poor, it is not inviting to use, and with poor lighting residents do not feel safe.

HBC, like most local authorities have been informed that the Revenue Support Grant from Central Government will disappear by 2020, and therefore they need to either reduce services or raise income from its own sources. There is a shortfall of approximately £1.2m per year.

HBC has looked at about 12 sites across Hertsmere including Potters Bar, Bushey, Borehamwood and Radlett, to see what revenue potential they have.

In the past HBC has received approaches from brokers on behalf of retailers and hotels to purchase Newberries Car Park for a retail outlet etc. Knowing this, and as part of the above review HBC had exploratory talks with some retailers to look at what may be achieved, but with HBC still owning the site.

This resulted in a report being taken to the Executive Committee of HBC on 14 December 2015.

<http://www5.hertsmere.gov.uk/democracy/documents/g10031/Public%20reports%20pack%20Monday%2014-Dec-2015%2018.00%20Executive.pdf?T=10>

This report gave a sketch outline of the case for a retail outlet and an 80 bedrooomed hotel in one building plus a very basic plan for the area.

APC discussed this proposal at its meeting on 15 December 2015, and whilst aware that this was a HBC project, as the local council it was necessary for it to act as a scrutiny panel on what was being proposed.

Immediately APC noted that there were some areas that needed to be addressed before the project progressed too far. These were:

- That the number of car parking places needed to be substantially increased to accommodate the increased visitors that a retail shop will attract to the area, as well as developments nearby such as the proposed 250 properties at the Harperbury Hospital site. This was on top of those required for users of and staff in the proposed hotel and retail unit.
- To enhance the landscape both of the car park surface but also along Tykeswater and the entrance road.
- To address concerns regarding the small roundabout access to the slip road down to the car park, especially as there may be an increase in vehicles accessing the area.
- To carry out a review of the parking regime for the whole area including in front of the shops in Newberries Parade.

Some of these points were taken on board by HBC when they discussed this at a Full Council in January.

APC, as part of this scrutiny role then invited HBC to speak at the Annual Parish meeting in March. It produced a briefing note which was tabled at the APM and the Chief Executive of HBC, Dr Donald Graham pointed out why the project was being considered. In the briefing note it confirms that the current level of parking will be maintained.

Over 200 people attended the meeting, and whilst it would not pacify those that seek to have no development, it did at least inform those present as to why the

## Memorial Seats for Phillimore Recreation Ground

The Parks & Open Spaces Committee recently approved a plan to place more seats in this area. The Council invites residents to purchase seats that will look the same as the others but will have a plaque in memory of a loved one. For further details please contact Manisha Kotecha on 01923 856433 or on [parks@aldenham-pc.gov.uk](mailto:parks@aldenham-pc.gov.uk).

*Peter Evans*  
Parish Council Manager

project is being considered.

There are no formal plans drawn up yet, and APC has been using this time to continue dialogue with HBC to ensure that all their concerns have been addressed. Part of this is to ask HBC to provide a cost for resurfacing the car park only as a capital project.

APC wrote a letter following the APM to HBC emphasising some of the points made by those present. This includes a pre-application public consultation with residents, hopefully over a few days, at The Radlett Centre to show residents what is proposed, and maybe include the retailers and hotel providers.

This may address some of the myths that are circulating. The brief should also have scientific evidence of what these developments would bring to the area.

Dialogue is continuing with HBC and it is producing updates on their website. As we go to press more proposals for sites over Hertsmere are being tabled at the Executive meetings, which shows that Radlett is not being singled out.

In the end the project must be economically viable for both HBC and the Parish of Aldenham before it can proceed. All parties will keep residents informed, but please read the facts rather than the rumours before you make your mind up.

*Peter Evans*  
Parish Council Manager



# ALDENHAM PARISH COUNCIL

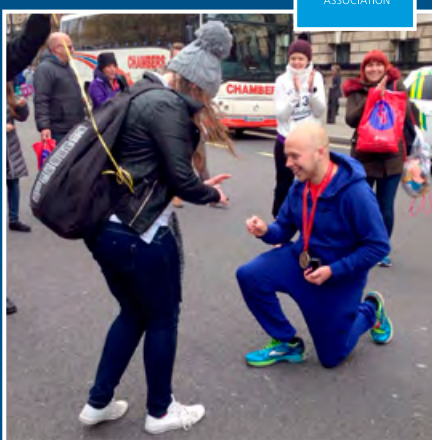
[www.aldenham-pc.gov.uk](http://www.aldenham-pc.gov.uk)

## Danny Wells – a very happy Marathon Man

On Sunday 24 April 2016, Radlett groundsman Danny Wells finished the London Marathon in a time of 5 hours 19 minutes 26 seconds. As stated in the previous edition he was raising monies in aid of The British Tinnitus Association. This was a fantastic achievement and he has raised over £900 so far. He would like to increase it to £1,000 and there is still time to donate via <http://www.justgiving.com/danny-wells>

Of course the day didn't finish there. Helped by his mother (who watched with friends and family from the crowds) at the end of the race and armed with the ring held by his mother, he bent down on one knee and proposed to his long-time girlfriend Nikita, who we understand said 'yes'.

*Peter Evans*  
Parish Council Manager



## Phillimore Recreation Ground

At last Aldenhams Parish Council has completed the works in Phillimore Recreation Ground. There is a new toilet block near the tennis courts, and where the pavilion stood has now been grassed over.

The next stage will be improvements to the car park surface, and creation of a footpath from the children's play area to the toilets. The Council is also looking at ways in which the drainage on the main field can be improved as well as the installation of a set of goal posts for informal football.

In April a new slide was installed to replace the one that had reached the end of its useful life. This is a new challenging piece of equipment. Aldenhams Parish Council would like to thank our local Hertsmere Borough Councillors for providing a grant for the works. The Tesco 'Bag for Help' scheme also donated £8,000 from your 5p charge for plastic carrier bags.

*Peter Evans*  
Parish Council Manager

### JULY

- Sat 2 –** Radlett Art Society
- Sat 9** Annual Exhibition
- Sat 9** The WestEnders 8pm
- Sun 10** Radlett Festival of Music 2pm & 6pm
- Wed 13** Russell Kane 7.30pm
- Thurs 14** Big Girls Don't Cry 8pm
- Fri 15** The Gruffalo's Child 1.30pm & 4.30pm
- Sat 16 –** The Gruffalo's Child
- Sun 17** 11am and 2pm
- Sun 17** The Big Band 7.30pm
- Thurs 21** High School Musical
- Sat 23** 7.30pm (and 2.30pm Sat)
- Sun 24** Voice of The Heart: The Music of The Carpenters 7.30pm
- Thurs 28** The Snail and the Whale 1.30pm & 4.30pm
- & Fri 29** The Snail and the Whale 10.30am & 1.30pm

### AUGUST

- Mon 1 –** Musical Theatre Workshop
- Fri 5**



## the radlett centre

**BOX OFFICE: 01923 859291**

[www.radlettcentre.co.uk](http://www.radlettcentre.co.uk)

- Tues 9** Dotty the Dragon 11.30am & 1.30pm
- Thurs 11** Art Society Lecture 8pm
- Tues 16** Aliens Love Underpants 1.30pm & 3.30pm
- & Wed 17** Aliens Love Underpants 11am & 2pm
- Mon 22 –** Musical Theatre
- Fri 26** Workshop
- SEPTEMBER**
- Sat 3** Jazz at the Movies 7.30pm
- Thurs 8** Elio Pace performs 'The Billy Joel Songbook' 7.30pm
- Fri 9** Jethro 7.30pm

- Sat 10** Monstersaurus 11am & 2pm
- Wed 14** Journey's End 7.30pm
- Thurs 15** Art Society Lecture 8pm
- Fri 16** The Celtic Journey 7.30pm
- Sun 18** West End Magic 3pm
- Weds 21** Henning Wehn 8pm
- Thurs 22** The Johnny Cash Roadshow 8pm
- Fri 23** Bucks Fizz 8pm
- Sat 24** Pasadena Roof Orchestra 7.30pm
- Tues 27** Omid Djalili Live! 7.30pm
- Wed 28** Daniel Cainer 7.30pm
- Thurs 29** Showstoppers! The Improvised Musical 7.30pm

### OCTOBER

- Wed 5** Halfway to Paradise – The Billy Fury Story 8pm
- Fri 14** Michael Portillo 7.30pm
- Sat 15** Snow White - The Ballet 2.30pm & 7.30pm
- Sun 23** Pam Ayres 5pm
- Thurs 27** The Haunting of Exham Priory 7.30pm

# YOUR HEALTH MATTERS

## Message from West Hertfordshire Hospitals Chair and Chief Executive



NHS Trust

*'The end of the financial year is a time to review performance, fiscal and operational.*

*In April 2015, following an assessment by the Care Quality Commission (CQC) of our hospitals in Watford, St Albans and Hemel Hempstead, the Trust was placed in special measures.*

*Our clinical care was commended. Unfortunately, corporate failings led to a disappointing result. However, out of 137 Trusts assessed, findings showed we are in the top 12% with "better than expected" mortality rates.*

*Our focus on recruitment is demonstrated in significantly lower*

*vacancy rates – from 32% to 11% in one nursing group with more than 300 new permanent staff employed in the last six months.*

*Improved ways of working and communication in maternity were praised in an externally-led clinical review which included patient representatives. A more efficient triage system in the emergency department is helping to make sure that patients get the right care sooner.*

*Of course, healthcare is not limited to hospitals and so we are working with our partners elsewhere in the NHS and in local authorities to improve the health*

*of our communities and the smooth running of our services.*

*We could not sign off without paying tribute to our hardworking staff whose standards of care have been complimented by inspectors, in peer reviews and by patients. Our roles as chair and chief executive are, at times, challenging. But what drives us on is the knowledge that our workforce – your NHS – are making sustained improvements every single day'.*

**Professor Steve Barnett**  
Chairman

**Jac Kelly**  
Chief Executive

## The Red House Patient Participation Group (PPG)

A new PPG has recently been formed representing the 20,000 patients of the Red House practice which will endeavour to continuously improve the general practice services offered to the community. It is essential that the local population receive their medical care in an accessible way and it should be of the highest standard.

The Patient Representatives of the three surgeries are Gill Balen, Peter Court, Alex Evans, Barbara Hordern, S. Kumara-Moorthy (Kumar), Jeff Land, Stuart Nagler (Chair), Christine O'Donoghue, Sally Pochin and Natalie Susman.

Any communications should be sent FAO the PPG on [redhousegroup@nhs.net](mailto:redhousegroup@nhs.net)

**Stuart Nagler**  
Chairman



### THE RED HOUSE BUILDING WORKS

Following extensive building works to the Red House Surgery in Watling Street we are pleased to announce that the alterations are now complete with little disruption to staff and patients, and five new ground floor consulting rooms have been added.

### DEFIBRILATORS

The Radlett Rotary Club is working with various organisations in Radlett to get this equipment into places where there is heavy footfall within the community. Those precious few minutes after a heart attack or collapse can make all the difference between life and death.

The banks are being contacted as well as the local churches and synagogues, discussions are ongoing with Tesco and Budgens – the Radlett Centre has one, and soon there will be one installed at the station.

The defibrillators are very easy to use, though some basic training should be provided.

For any further information, please contact either David Rose (01923 855873) or Stuart Nagler from the Rotary Club.



### CONCERNS OVER MISSED APPOINTMENTS

The number of missed appointments by patients is a huge concern to everyone including those waiting for appointments, the office staff, doctors and a great cost to the NHS. The missed appointments in January were 176, in February 179 and in March 215. Should your next appointment be no longer required please make sure you telephone to cancel.

### WE CARE, COULD YOU?

There are thousands of people working in the care service in Hertfordshire, making a real difference to the lives of so many of our old and vulnerable residents. With an increasing demand for care services more people are needed to make a career in care. Free 'care certificates' training courses run by Hertfordshire Care Providers Association (HCPA) are currently in place across the county. Visit [www.hertsgoodcare.com](http://www.hertsgoodcare.com) or call HCPA on 01707 536020.



**HertsHelp**

Local advice, information and support to make life easier

### HERTSHELP

If you need help and don't know where to turn, contact us for confidential help from anything from smoke alarms, carers, entitlements, dementia to substance misuse. Telephone 0300 123 4044 (local rate) or email [info@hertshelp.net](mailto:info@hertshelp.net)

# POST OFFICE

## Radlett Post Office

In 1871 there were only a thin sprinkling of buildings in Radlett; the Church, the station complex including the flint cottages, three public houses as well as a number of cottages, farm buildings and other isolated dwellings straggling the village. A number of shops were situated on The Terrace (the area between Nat West Bank and Pizza Express) among these shops was Radlett's first Post Office that offered a counter service only.



Radlett Post Office c1900.

By the late 1890's the post office had moved to Radlett Stores (situated opposite Barclays Bank), again offering a counter service only. It was not long before the post office moved for the

third time to Porter's Ironmongers at the bottom of Station Road (now Barker's Estate Agents). See photo left c1900. It had become apparent that more room was required for the telegraphic side of post office work and Radlett's first full post office came into being.

In c1930 a purpose built red brick post office and sorting office was erected (next door to The Red House Surgery). See photo above right. Today, although closed for use as a post office, the sorting office remains operational to the rear of the building and our postmen still operate from there. In 2008, the building was added to the List of Locally Important Buildings by Hertsmere Borough Council. It is recognised as being part of the socio-economic growth of the commercial centre within Radlett in the early 20th century.

By 1989, a rumour that the post office might possibly close was announced and residents were urged 'to use it or lose it' by collecting pensions, child allowance, car tax discs, and the 100



and one things that post offices were used for. However, the decline of all post offices was inevitable as we gradually moved into an electronic world.

By 2015, some sixteen years after the first rumours were mooted the post office finally closed and transferred its counter service to Budgen's Supermarket. The service is available seven days a week from early morning to late.

Let us not forget the other post office counter service in Radlett situated at Battlers Green Drive among a small parade of local shops. The service they offer includes: postal services, Post Office Account Card, cash deposits and withdrawals via chip and pin, Postal Orders, parcels, MoneyGram, electronic bill payments, E Top-Ups, pre-order travel money and Euro currency.

Jan Adams

## Radlett Horticultural Events



Radlett Horticultural Society **Mini Flower Show** is on 22 June at 8pm in the Vision Hall,

Christ Church. This is part Flower Show and part instructional evening where our judge explains exactly why he has chosen each prizewinner. There is also an opportunity for all to have a go at judging. Complimentary glass of wine included.

**Scarecrow Competition at the Radlett Festival on 26 June** We hope to see stars galore at this year's movie themed Radlett Scarecrow Competition at the Radlett Fair. The Radlett Horticultural Society invites all children to bring along their scarecrows to vie for the coveted

prize rosettes under the spotlights on the red carpet. There will be two categories, one for children at nursery and primary school, and one for secondary school students (under 18). Scarecrows should be brought to the Recreation Ground between 9.30am and 12-noon on 26 June and should be taken home at the end of the Fair. Entry forms are available from Aldenham Parish Council office, Aitchisons in Watling Street and the Radlett Horticultural Society Store in Scrubbits Park Road (open Sundays 10am-noon). Please return your form by 19 June if possible to aid planning. The Radlett Horticultural Society will also be having a stall selling plants.

Radlett Horticultural Society **Autumn Show** on Saturday 3 September, 3pm-5.30pm at the Vision Hall, Christ Church. Classes for Flowers, Fruit and

Vegetables as well as Photography and Domestic classes with homemade cakes. Lots of Children's Classes. Teas and cakes on sale. For more info about entering contact the Show Secretary, Peter Breward on 854564.

Peter Hordern, Chairman



### CITIZEN'S ADVICE BUREAU

Every Tuesday from 10am to 1pm.

First Floor, The Radlett Centre.

Sessions operate on a 'drop-in' basis. If required appointments can be made on **0844 826 9703**



The 9th Radlett Rotary Fun Run took place once again on Bank Holiday Monday 2 May, at Radlett Cricket Club. As in previous years there were two races (1.5km and 5km), again generously sponsored by local chartered accountants Nagler Simmons.

The weather was once again kind to us and we were slightly up on last year with 344 runners in total. In addition to the runners there was a great crowd of spectators to cheer the runners on, and refreshments were available throughout the morning from the Cricket Club. Early sums indicate that in excess of £3,000 has been raised, to be shared between Rotary charities and the associated charities, Hertsmere Mencap & Whizz-Kidz.

There isn't enough space here for all the results, but the first past the post

in the 1.5km event was Archie Nash in 5 minutes and 2 seconds, the first girl was Megan Finch. In the 5km event, there was a slight mishap with the first few people taking a wrong turning for which we apologise, and we hope we have correctly massaged the results to take this in to account. The fastest in this one was Mark Taplin in a blistering 14 minutes and 58 seconds - that's fast! He was closely followed by Nick Lavan and then by 11 year old Samuel Newman. Yes, that isn't a misprint, he's that young, and he therefore also won both the under 12 and under 16 men's trophy! The first woman was Lily O'Dell in 22 minutes and 44 seconds. The under 12's girls trophy was won by Maya Brockie and the under 16's by Lily O'Dell (again). The team trophy was won by a whisker by team "Joggy McJogface".

Full results have been posted onto our sponsor's website found at [www.naglersimmons.co.uk](http://www.naglersimmons.co.uk). Photos of the event are also accessible from the same site.

Thanks are due to Radlett Cricket Club for hosting the event, to Aldenham Parish Council for their support, and to all those that helped with the event. Thanks also to the Mayor of Hertsmere, Councillor Martin Worster, and to Councillor Neil Payne, chairman of Aldenham Parish Council for their help in presenting the medals and trophies.

And make a note in your diaries for next year's event. Same time and place, on Bank Holiday Monday, 1 May 2017.

John Prior



## The Big Friendly Read

Hertfordshire Library Service is pleased to announce that this year's Summer Reading Challenge – **the Big Friendly Read** – will launch on Saturday 16 July 2016. Over 18,500 Hertfordshire children took part in the challenge last year and we're hoping that this will be the best year yet!

**What is it?** The challenge encourages Hertfordshire children of all ages to read six library books over the summer holidays and to visit the library to tell us about them. Children can read anything: story books, factual books, e-books (download them for free from our e-library), or even listen to talking books. Very young children can be read to – it still counts and is a great way to introduce them to books.

This year's theme is the *Big Friendly Read* to mark one hundred years since the birth of Roald Dahl, the world's number one storyteller. The challenge features some of Roald Dahl's best



loved characters, wonderfully illustrated by Quentin Blake.

**How do children sign up?** It is completely free to take part; all children need to do is visit their nearest local library between Saturday 16 July and Saturday 10 September for a free joining pack. Limited edition Quentin Blake collector cards are up for grabs, and medals and certificates will be awarded to children who finish the challenge.

For more information visit [www.hertsdirect.org/libraries](http://www.hertsdirect.org/libraries), telephone 0300 1234 049 or visit Radlett Library, 1 Aldenham Avenue, Radlett, WD7 8HL or the Reading Agency website [www.bigfriendlyread.org.uk](http://www.bigfriendlyread.org.uk)

Lisa Cooper, Librarian

Have you thought about being a school governor?



Governorship is a challenging but satisfying voluntary role. At St John's CE Infant and Nursery School in Radlett excellence and enjoyment go hand in hand to lay the foundations for a lifelong love of learning. The governing body's role is to make sure that happens.

We are looking for an individual with a business or professional background, some experience of HR and other relevant skills to join our Governing Body.

If you would be interested in being a part of this then please contact the chair of governors at [chairofgovernors@stjohnsradlett.herts.sch.uk](mailto:chairofgovernors@stjohnsradlett.herts.sch.uk) or telephone 01923 856594.



## CLEAN FOR THE QUEEN

As part of the national campaign to celebrate HRH Queen Elizabeth II turning 90, Brownies across the country have spent their time picking litter from grass verges in Watling Street as part of the 'Clean for the Queen' campaign.



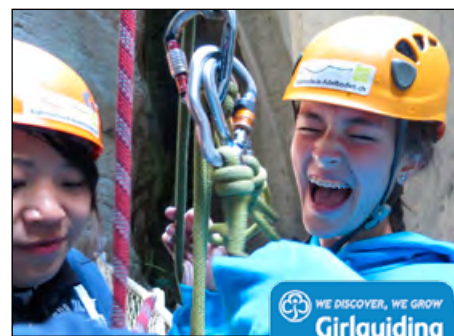
Brownies from the Radlett area took part in the 'Clean for the Queen' day.

## We Were Definitely 'Being Our Best' at Our Chalet!



After lots of planning, fundraising and preparations a group of sixteen Guide and Senior Section members plus three leaders from Radlett District boarded a plane for a truly unforgettable experience at Our Chalet, our WAGGGS\* World Centre in Adelboden, Switzerland. (\*WAGGGS – The World Association of Girl Guides and Girl Scouts, 10 million+ members in 145 countries).

The whole group had a truly amazing time, challenging themselves physically, highlights being mountain hikes, white water rafting, gorge abseiling, rock climbing and high rope courses. Mental challenges involved further learning about the work of WAGGGS through their 'Free Being Me' and 'Stop the Violence' campaigns. After the trip some of the girls said:



*"I learnt that I can do anything if I put my mind to it..."*

*"I got more determined as the trip went on and conquered my fear of heights..."*

*"The challenges I faced made me realise things about me that I had never known before..."*

All of the girls are continuing their Guiding journeys, with two moving onto the Ranger section, three becoming Young Leaders, three completing their Baden Powell Adventure Awards, and three of the girls undertaking their Adult Leader Qualifications, one of whom is also working towards her Queen's Guide Award.

**Nicola Day**  
District Leader  
Girlguiding Radlett District



## Ben Evans – Parish Councillor for a Year

It hardly seems possible that a year has passed since I was elected on to the APC. At that stage, for me it was a venture into a largely unknown world of parish governance. I was keen to become more involved in the local community, and as Head of Edge Grove School, to play a part in this, hoping that the school's fantastic facilities could be more widely utilised.

From my very first meeting, and there have been many since, it became abundantly clear that my fellow councillors are an extremely hardworking and enthusiastic team. They know Radlett and the surrounding villages well and are dedicated to improving facilities, to ensuring all parishioners are a part of the community, and above all to making Aldenham parish a wonderful place to live and work. They achieve this not just through our monthly meetings but by engaging with all stakeholders, by understanding the needs of the community and by giving tirelessly of their time.

For me, there has been a lot to learn! My wife Alex and I are relative newcomers to the area, having lived here just four years, and as a member of the Parks and Open Spaces committee it has been a great pleasure to learn about the amazing amenities that we have in the Parish and how they are so well used and loved. It is important to remember that these exist and develop due to a great deal of time and attention from those employed by the council as well as community members, and the councillors themselves. This is something I wouldn't have given much thought to before.

Community Engagement and Development is another committee I sit on and one close to my heart. We live in a very welcoming community and it is an essential role of the APC to engage with all parishioners to fully understand the needs and wishes that we have been elected to look after. Our remit is wide and diverse, including the Youth Council and providing opportunities for the elderly. The Neighbourhood Plan is another example of the exciting developments which are ongoing and so beneficial to the Parish.

In these few words I have only scratched the surface of my first year as a councillor. I still have a great deal to learn and offer the community.

**Ben Evans**

Large & small



### Gem'll fix it

Just phone Gem on  
01727 872136  
Mobile: 07877 926130

Carpentry a speciality

Electrics • Decorating • Plumbing  
Flat Packs • Plastering • Tiling  
Replacement Windows & Doors  
Bathrooms & Kitchens • Flooring  
- and outside work

Full Home Maintenance  
Park Street based  
Free estimates given  
References available



Virtually all jobs



## Our local PCSO

*Hello Residents,*

At this time of year, we tend to see an increase in burglaries of sheds and garages. Make sure you secure your outbuildings and put away garden tools, furniture, toys and ornaments.

Remember – you increase the risk of being burgled if ground or easily accessible windows or doors are left open or insecure.

The summer is a great time for parties and events but please don't drive drunk, always wear your seat belt and make sure all your passengers are securely fastened in your vehicle.

We run neighbourhood surgeries in Radlett Library and mobile 'beat surgeries' every month to discuss

crime-related concerns with residents – please come along.

We send details of events out to Neighbourhood Watch members via the OWL messaging system, which we also use to send emails to residents about local crimes and relevant crime prevention advice.

Please visit [www.owl.co.uk](http://www.owl.co.uk) to sign up to this free service.



If you have any local policing issues you would like to raise with us, please contact the Safer Neighbourhood Team by email at [sntbusheyandradlett@herts.pnn.police.uk](mailto:sntbusheyandradlett@herts.pnn.police.uk) or via the police non-emergency number **101**. If you see a crime in progress, call **999** immediately.

*PCSO Tim Conway 6263*



## RADLETT YOUTH COUNCIL

This past year, the Radlett Youth Council members have come together on a regular basis to discuss local issues that directly affect them.

The fact that they are unable to use an Oyster Card when boarding a train from Radlett has been high on the Agenda for discussion. The RYC have written to Oliver Dowden MP to try and add weight to his own argument that this is a service definitely required by all the local community. The RYC members hope that the voices of the young people will also be heard by those making the decisions. The use of an Oyster Card would enable people to travel freely without having to buy separate tickets to do so.

The RYC were present at the 'Winter Fair' event asking people to complete questionnaires as well as trying to get new members to participate in the Youth Council.

On the back of last years successful 'Bike Event' the RYC are hoping to hold another event in the autumn, although the format that it will take is to be finalised in the coming weeks.

Being a member of the Radlett Youth Council is both educational and fun. It brings young people of the ages 11-18 years together from many different schools, religions and backgrounds on a regular basis.

If you know of anyone who would be interested in joining the Radlett Youth Council please ask them to get in touch with the Aldenham Parish Council office on **01923 856433** for more information.

I would like to thank all the members of the Radlett Youth Council for their dedication and commitment this past year.

*Councillor Estelle Samuelson  
Chair – Community Development  
and Engagement Committee*



## SAFER NEIGHBOURHOODS

*Reducing crime, catching criminals and keeping people safe*



Website Address: [www.herts.police.uk](http://www.herts.police.uk)  
Neighbourhood

Police Team:..... **01707 354192**

Non Urgent Calls:..... **101**

Urgent Emergency Calls:..... **999**

Email:

[SNTBusheyandRadlett@herts.pnn.police.uk](mailto:SNTBusheyandRadlett@herts.pnn.police.uk)

Follow on: [twitter.com/RadlettPolice](https://twitter.com/RadlettPolice)



Radlett Neighbourhood  
Watch Co-Ordinator  
Angela Thomson  
email: [at@thomsons.co.uk](mailto:at@thomsons.co.uk)



Community Safety  
Partnership  
(Aldenham and  
Bushey)

Zoe-Louise Keyte  
Hertsmere CSP

Civic Offices, Elstree Way,  
Borehamwood, Herts, WD6 1WA

email:

[partnership.support@hertsmere.gov.uk](mailto:partnership.support@hertsmere.gov.uk)

Phone: 020 8207 7801



## Radlett, Aldenham & Bushey Community Safety Partnership meeting on Monday 27 June, 6.30pm at The Radlett Centre, Aldenham Avenue, Radlett, WD7 8HL

The Chair of the Radlett, Aldenham & Bushey Community Safety Partnership (CSP), Dr Raymond Coffer, together with vice-Chair, Cllr Estelle Samuelson, invite residents, businesses and interested parties in Aldenham and Radlett to attend the next CSP meeting.

CSP meetings give all interested parties the opportunity to find out what their local CSP is doing to create a safer environment by tackling crime and antisocial behaviour with updates from partners, including the council, councillors, housing associations, the police and the fire service. Current issues and local matters of community safety can also be raised with the CSP and

its partners.

At the meeting on Monday 27 June there will also be a guest speaker who will give a brief talk to residents and offer advice about the important matter of the emerging trend of New Psychoactive Substances (NPS), also known as 'Legal Highs'.

Following the meeting on Monday 27 June, the next Radlett, Aldenham & Bushey CSP meeting will take place on Monday 10 October at 7pm, Queens School, Bushey, WD23 2TY. To find out more please contact [partnership.support@hertsmere.gov.uk](mailto:partnership.support@hertsmere.gov.uk) or call 020 8207 7801 or visit [www.hertsmere.gov.uk/csp](http://www.hertsmere.gov.uk/csp)

Pip's Dent Removals Ltd  
 Painless Dent Removals  
 Call Pip for a quote on 07930366777

Minor dings and dents removed  
 While u wait!  
 Repairs significantly cheaper than  
 bodyshop repairs.

End of Lease service, Scuff and  
 wheel repair is also available.

Text or email a photo to  
 pipellis@me.com for free  
 advice and quote.

Over 25 years experience  
 in the motor industry



## Safe and happy at Tomten Kennels, Cattery and Grooming Salon



Take the worry out of holiday arrangements by ensuring  
 that your pets are in safe, professional hands.

15 London Road, Shenley  
 www.tomten.co.uk Tel. 01923 856264



## The Oakridge Practice Footcare Clinic

HPC registered Podiatrist / Chiropodist  
 01923 839 796

www.oakridgepractice.com

244, Radlett Road, Colney Street,  
 St Albans, AL2 2EN

## NETHERCOTT

INDEPENDENT FAMILY FUNERAL  
 DIRECTORS & MONUMENTAL MASONS  
 OF DISTINCTION SINCE 1911

20 ALDENHAM ROAD,  
 RADLETT WD7 8AX  
 TEL: 01923 852899

98 SHENLEY ROAD,  
 BOREHAMWOOD WD6  
 TEL: 020 8953 9555



96 Watling Street, Radlett, Hertfordshire WD7 7AB

Tel: 01923 857338 Fax: 01923 857778

Website: www.radlettphysiotherapy.co.uk

Email: info@radlettphysiotherapy.co.uk

In pain? Don't be.

Come and see our specialist physiotherapists who can  
 get you back to an active, pain free life.

### Physiotherapy treatment for:

- Neck and back pain
- Muscle and joint pain
- Sports injuries
- Whiplash
- Headaches
- Arthritis and chronic conditions
- Work-related injuries

### Additional Services:

- Pilates classes
- Over 60's fitness class
- Post op rehab
- Metafit classes
- Sports massage

## Why live with pain?

Treatments available include:

Sports injuries, Nerve/Sciatica Problems, Neck & Shoulder Pain,  
 Tennis Elbow, Frozen Shoulder, Hip & Groin Pain, Back Pain,  
 Arthritic Pains & Rheumatism, Wiplash & Cranial Osteopathy,  
 Pregnancy Aches & Pains.

**Radlett**  
 Osteopathic Clinic



**Maria Matthews**

New Road, Radlett WD7 8LX

tel: 01923 852259

web: www.radlettosteopathy.co.uk

## JB TV SERVICES

REPAIRER OF  
 LCD/PLASMA/TV/VIDEO/AUDIO/DVD



**SONY  
 JVC  
 Panasonic**

- REPAIRS TO ALL MAKES & MODELS
- AUTHORISED REPAIRERS OF  
 SONY, JVC, PANASONIC

TV/VIDEO/DIGITAL/TUNING/FREEVIEW  
 INSTALLATION & SET UP  
 TEL: 07961 420 535

## WRENS ELECTRICAL

DOMESTIC AND COMMERCIAL  
 ELECTRICAL CONTRACTORS

Lighting Heating Sockets • Distribution Boards Inspection  
 Fault Finding Electrical Reports • L.E.D.'s T.V. Fuse Boxes  
 Part P Regs Immersion heaters • 3-phase Installations  
 Oven repairs • Cat 5/6 cabling NICEIC test and inspect



RADLETT 01923 854907  
 HARPENDEN 01582 762435  
 www.wrenselectrical.co.uk  
 email: martin.wren@sky.com

COMPLETE  
 REWIRES  
 & ALL ASPECTS  
 OF ELECTRICAL  
 WORK  
 UNDERTAKEN



### CARPENTRY

KITCHENS & BATHROOMS  
 FITTED WARDROBES  
 CUSTOM MADE CABINETS  
 DOORS SUPPLIED & FITTED

### FOR DECORATING

INTERIOR & EXTERIOR  
 SPECIALIST PAINT EFFECTS  
 WALLPAPER HANGING

WORKING IN RADLETT FOR  
 OVER 15 YEARS

EXPERIENCED TRADESMAN  
 REFERENCES AVAILABLE on REQUEST  
 FOR A FREE QUOTATION & DESIGN ADVICE

CALL DAN on

07808 401678 or 01727 825691

Email: dacmaintenance@btinternet.com

## Ken Hodson

Local Computer Hardware & Software Repairs  
 Upgrades and Advice for Home and Business

Ken Hodson Computer Services Ltd.  
 115 Tassell Hall, Redbourn, Herts. AL3 7JE  
 T: 01582 794723 M: 07974 156743

Email: enquires@kenhodsoncomputerservices.co.uk  
 www.kenhodsoncomputerservices.co.uk

- No fix, no fee for all repairs - you have  
 nothing to lose.
- Low hourly rate.
- Most repairs carried out in your home, if  
 not the computer will be picked up and  
 delivered back to you.
- Upgrades of hardware and software.
- Friendly training and instruction available  
 in plain English.
- Problems with Windows / Applications  
 / Games / Internet / networks fixed.
- Advice given on upgrades - many older  
 computers can be upgraded at a fraction  
 of the cost of a new machine.



## INDEPENDENT, BESPOKE VETERINARY CARE



Ample Parking, Friendly Staff, Dog and Cat Waiting Rooms  
 Free New Kitten/Puppy Checks, Dental Checks and Weight Clinics

Modern Facilities in  
 a Traditional Setting

@ The Red Cow, 107 Radlett Road, Frogmore,  
 Herts AL2 2LA www.halianvet.co.uk 01727 874700

## Locksmith SERVICES

Your local approved Locksmith  
 CALL US FIRST FOR BEST PRICES

FULLY TRAINED LOCAL LOCKSMITHS  
 (WE ARE NOT A CALL CENTRE)

- Lock Outs • OAP Discounts • Boarding Up •
- Security • Consultants • Police Vetted •

Fast Response Times -  
 Usually within Half An Hour  
 24 Hours 7 Days A Week No Call Out Charge

St Albans 01727 400 012 Harpenden 01582 206 399 Radlett 01923 375 234 Redbourn 01582 206 008



Paper used is from  
 well-managed/sustainably  
 managed forests



Designed and Printed by Caprin Printers

Unit 2, Park Industrial Estate, Frogmore, St. Albans, Herts, AL2 2DR.

T: 01727 872 021 W: www.caprin.co.uk

For all your print needs - give us a call!