



# Around Radlett

AUTUMN/WINTER 2016

# 112

The Newsletter of Aldenham Parish Council • [www.aldenham-pc.gov.uk](http://www.aldenham-pc.gov.uk)



Season's  
Greetings

Painting by  
Nicky Baron

REMEMBRANCE  
SUNDAY





# Season's Greetings



Councillor  
Neil Payne

## Chairman's Message

In June I represented the Parish Council at a Service of Thanksgiving at Christ Church to celebrate **Her Majesty The Queen's 90th Birthday**. The service was graced by the attendance of the Bishop of Bedford who preached the sermon. Unfortunately, due to the inclement weather, the proposed barbecue had to be eaten in the Vision Hall and the planned children's activities cancelled.

Fortunately, later in the month the weather was much improved for the **Radlett Festival** which, after a year's absence, had been organised by a new committee. A large number of residents enjoyed a range of activities including characters from Frozen, circus acts, a dog show and a magician. Many stalls and a wide range of food in the Food Court meant that many families spent a wonderful day up at the Recreation Ground. My thanks go to the members of the Committee for all their hard work.

Work has been continuing on the **Neighbourhood Plan**. The Steering group had a slight setback during

the period as the consultant who was advising us gave up practising. Fortunately, we were able to recruit a most experienced replacement who helped to identify clearly the next steps on what is a long and tortuous process.

The Parish Council has been working closely with Hertsmere Borough Council (HBC) concerning the latter's plans to develop **Newberries Car Park**, with particular attention being given to increasing the number of car parking spaces, the environmental aspects of the car park and surrounding area and the access/exit onto Watling Street. As I write this, HBC has recently announced that the development will include a Marks and Spencer food hall and a Travelodge hotel. HBC has also held a public consultation event at the Radlett Centre, which was attended by some 400 people.

The **Summertime activities**, hosted by the Parish Council on each Tuesday in August at the Recreation Ground, proved to be highly popular with children of all ages. Despite a rather wet start on the first Tuesday, the number of families attending steadily increased over the five Tuesdays. The initial feedback is that the events were very successful and the Parish Council will be looking at

whether it can offer something similar in future.

I was pleased to present the **Parish Council's Centenary Cup**, for the best front garden display in the Parish (kindly judged by the Radlett Horticultural Society) to a most worthy winner in Letchmore Heath. I offer my congratulations to Matthew Bolshaw on his front garden, which was a picture of colour.

Whilst talking of colour, I would like to thank the **Ground Staff** for an excellent display of hanging baskets in Watling Street and also other floral displays this summer. At one stage, however, we thought that we might have to take down the hanging baskets, as we were informed that the lamp posts on which the baskets were placed had to be stress-tested first! Fortunately, reason prevailed and we were able to delay the testing until the end of the summer when the baskets are taken down.

During the past few months we welcomed Manisha Kotecha and Claire Larkin to the Council's staff.

Councillor Neil Payne  
Chairman  
Aldenham Parish Council



## What's On...

Remember to check the Aldenham Parish Council website for all up to date events and meetings  
[www.aldenham-pc.gov.uk](http://www.aldenham-pc.gov.uk)



**Tuesday 8 November 7.30pm to 10pm**

Aldenham Women's Institute, Aldenham  
**theWi** Prep School,  
Aldenham Road,  
Elstree. **Extreme**  
**INSPIRING WOMEN** Knitting. Please  
contact **Diana Mitchelmore** on **01923 251436** (evenings) or just turn up.

**Sunday 13 November**  
**Remembrance Sunday.**

For more details of local services see page 6.



**Tuesday 15 November at 2pm**

**Radlett Flower Club.**  
St. John's Church, Gills Hill, Radlett. Special Christmas demonstration by Lesley Sturdy. All visitors welcome £6.

**Saturday 19 November at 7.30pm**

**Radlett Choral Society**  
**Concert.** St. Saviour's Church, St. Albans. Programme to include Faure Requiem and Bach Cantata 18. Tickets £12, accompanied children free. Box office **01923 226836 / 243545**.

**Sunday 20 November from 10.30am to 3.30pm**

**NSPCC** N S P C C  
**Christmas Craft and Gift Fair**, Allum Lane, Elstree.

Numerous craft and gift stalls, delicious hot and cold foods, live music by **Borehamwood Brass Band**.

**Saturday 26 November 10.30am to 12.30pm**



**Christmas coffee morning** at St. John the Baptist Church, Aldenham. For details contact **Julia Benyon** at [Julia.benyon@ntlworld.com](mailto:Julia.benyon@ntlworld.com) or call **01923 857017**.

**Sunday 27 November 2pm to 4.30 pm**



**Mitzvah Day**, Phillimore Recreation Ground, Gills Hill, Radlett.



the radlett centre  
events are on page 4

The painting on the front cover of this edition is  
**'Footprints in the Snow,  
Watling Street, Radlett'** by Nicky Baron.

This painting was handed in for sale at the Watford Peace Hospice Shop who decided to auction it. Aldenham Parish Council bid £40 for it and were the highest bidders.



Around Radlett would be very grateful to receive any paintings or photographs of local scenes.

Please contact  
[community@aldenham-pc.gov.uk](mailto:community@aldenham-pc.gov.uk).

**Sunday 27 November 1.30pm to 5.00pm**



**Aldenham Parish Council Winter Fair** at The Radlett Centre, 1 Aldenham Avenue, Radlett. See **poster right** for more details.

**Sunday 27 November 11am to 2pm.**

**Bloodwise Christmas Bazaar**, Phillimore Court, Battlers Green Drive, Radlett. Stalls, handicrafts, cakes and more. All enquiries to **Edie Oakley Bloodwise** on **01923 857570**.  
Formerly Leukaemia & Lymphoma Research

**Saturday 3 December 7pm for 7.30pm.**

**Annual Christmas Variety Show and Supper.** St. John's Church, Gills Hill. Tickets £15.00 to include supper. For details contact **Julia Benyon** a [Julia.benyon@ntlworld.com](mailto:Julia.benyon@ntlworld.com) or call **01923 857017**.

**Saturday 3 December 7.30pm**

**The Phoenix Band's annual Christmas concert** will be held in Christ Church, Radlett. Tickets on the door (£6 adults, £4 concessions, children under 16 free). Light refreshments on sale during the interval. All proceeds from ticket sales and refreshments will go to the **Keech Hospice** ([www.keech.org.uk](http://www.keech.org.uk)).



**Sunday 4 December from 6pm**

**Bloodwise Christmas Lights Switch on and fireworks display.** David Press, 33 Battlers Green Drive. All proceeds go to the charity **Bloodwise**.  
Formerly Leukaemia & Lymphoma Research

**Sunday 4 December**

Patchetts Green, Aldenham Christmas Fair. For further information please contact **Brian Hyde Jnr** on **07952 688099** or **01923 857265**

**Wednesday 7 December**



**Radlett Art Society Members' Christmas dinner** at the Porters' Park Golf Club. For more information go to [www.radlett-art-society.co.uk](http://www.radlett-art-society.co.uk).

# Aldenham Parish Council Winter Fair

at the Radlett Centre

**Sunday 27 November 1.30-5.00pm**

**The Christmas Lights switch-on will be at 4.30pm**

**Santa's Grotto with Father Christmas and his Elves**

**Arts and Crafts Fair  
Food Stalls  
Mulled wine  
Bouncy Castle  
and other festive attractions**

**Santa Sumos  
Snowboard simulator**

**...and much more!**



**For more information please contact  
Claire Larkin on 01923 856 433 or  
email [community@aldenham-pc.gov.uk](mailto:community@aldenham-pc.gov.uk)**

The event is  
organised by  
Aldenham  
Parish Council

**Saturday 10 December at 7.30pm.**

**Shades of Blue** at St. John the Baptist Church, Aldenham. Details from **Julia.benyon@ntlworld.com** or call **01923 857017**.

**Tuesday 13 December at 7.30pm to 10pm**



Aldenham Institute, Prep School, Aldenham Road,

Elstree, **Christmas Party.** Please contact **Diana Mitchelmore** on **01923 251436** (evenings) or just turn up.

**Saturday 17 December at 7pm.**

**Radlett Choral Society.** **Concert of music and readings for Christmas** at Christ Church, Radlett. Tickets £12 to include mulled wine and seasonal nibbles.





The lights soften, the mood settles, the murmured notes of "Moonlight Serenade" ring out and suddenly the night is full and timeless. Recapture the sounds of a bygone era as the Nick Ross Orchestra presents "an unmissable evening of music and song" – the Classic Big Band Sound of the 1940s with a liberal "sprinkling" of a special Christmas Big Band arrangements.

## NOVEMBER

**Wed 2 –** The Wiz 7.30pm  
**Fri 4**  
**Thurs 10 –** Laying the Ghost  
**Sat 12** 7.30pm  
**Thurs 17 –** Peter Pan – The Musical  
**Sat 19** 7.30pm & 2.30pm (Sat)  
**Tues 22 -** Annie 7.30pm  
**Fri 25**  
**Sat 26** Annie 10.30am & 3pm



The nation's favourite psychic, Sally Morgan is back and better than ever with her brand new and most jaw-dropping show yet - 'Call Me Psychic'. Funny, entertaining, sometimes heart breaking, often controversial; the show celebrates her 8th year on the road.



**the radlett centre**  
**BOX OFFICE: 01923 859291**  
**www.radlettcentre.co.uk**

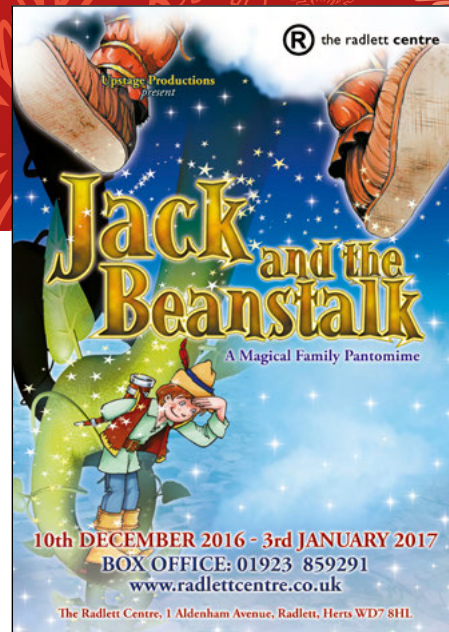
**Sun 27** APC Winter Fair 1.30pm  
**Tues 29** Mishka Momen, piano 8pm

## DECEMBER

**Sat 3** **Nick Ross Orchestra:**  
**In the Chirstmas Mood**  
**7.30pm**  
**Sun 4** Mark Maier 7.30pm  
**Sat 10 –** Jack & the Beanstalk  
**Tues 3 Jan**

## JANUARY

**Fri 7** Roy Chubby Brown 7.30pm  
**Thurs 12** **Psychic Sally: Call me**  
**Psychic 7.30pm**  
**Thurs 19** Magician & Comedian 7.30pm  
**Fri 20 –** Wow! Said the Owl  
**Sat 21** 11.30am & 2.30pm  
**Sun 22** Ruth Schulten and Friends 3pm



*Jack and the Beanstalk has everything – magic beans, a giant, a brave hero, a beautiful princess and loads of audience participation – not forgetting Daisy the Cow! Join in the fun, songs and laughter of this extremely popular family friendly fairytale.*

**Fri 27** Think Floyd 7.30pm  
**Sun 29** Neil Diamond Story 7.30pm

## FEBRUARY

**Wed 1 -** Ben & Holly 10am, 1pm & 4.30pm  
**Thurs 2**  
**Fri 3** Stephen K Amos 7.30pm  
**Sun 12** The Elvis Years 7.30pm  
**Wed 15** Marty MacDonald's Toy Factory 2pm  
**Thurs 16** Ashley Blaker 7.30pm  
**Sun 19** Alice in Wonderland 2pm  
**Sun 19** Ashley Blaker 7.30pm  
**Fri 24** Lee Nelson 7.30pm  
**Sat 25** Dire Streets 7.30pm

[www.radlettcentre.co.uk](http://www.radlettcentre.co.uk) [www.radlettcentre.co.uk](http://www.radlettcentre.co.uk) [www.radlettcentre.co.uk](http://www.radlettcentre.co.uk)



**London Specialist Auctioneers**  
**Jewellery Medals Coins Banknotes**  
**Regular Valuation Days**  
*at*  
**The Radlett Centre**  
 Experienced specialists available by appointment to offer confidential valuations *free of charge* with a view to a possible sale in our Mayfair rooms

Please ring 020 7016 1700 for an appointment or email [jewellery@dnw.co.uk](mailto:jewellery@dnw.co.uk)  
[www.dnw.co.uk](http://www.dnw.co.uk)





## Radlett Bowls Club

Radlett Bowls Club is to be congratulated on becoming Champions of their division and thus their promotion up to Division 2 of Watford & District Veteran's Bowling Association. Their Team Captain Melvin Green said "We are thrilled and delighted to win this promotion during the lawn

*bowling season which is from end April to end September. We are situated in Phillimore Recreation Ground in Radlett and always welcome new members to the club". Anyone interested in the free tuition scheme and joining the Club should please contact the Hon. Secretary, John Tilsiter on 01923 853231 for details and information.*

**John Tilsiter**





# Radlett Festival 2016

Over the last eleven years, the Radlett Festival has raised approximately £55,000.00 and made grants close to £47,000.00.

Grants have been made across a broad spectrum of ages within the Parish and these include youth orientated clubs

such as the Scouts, Guides, Local PTA's, children's music and theatre groups and children's facilities. Also grants have been bestowed upon associates that provide support and care to older people or those with disabilities.

If you have a project that requires

financial help please contact us. We would love to hear from you via our Radlett Festival website page <http://www.radlettfestival.com/>

We will shortly be advertising our next festival date. If you missed this year and heard how great it was, you won't want to miss next year's even bigger and better festival.

Life isn't always about money, it's about smiles and laughter!

*Paul Howard*



## Keep warm this winter

As summer becomes winter and the days get shorter and the temperature

drops, many older people begin to feel cold and miserable in their homes.

If you or someone you know is worried about feeling cold at home in the months ahead then Small Acts of Kindness can help. We can deliver a free 'Warm in Winter' gift bag to anyone aged over 55 living in Hertsmere, Watford and Three Rivers and in other parts of Hertfordshire too.

Our Warm in Winter gift bags contain a lovely large fleecy blanket, thermal socks, hat and gloves and a mug filled with sachets of hot drinks and soup, all beautifully packed in a reusable shopping bag – everything you need to help fight the cold. If you or someone you know would like a free Warm in Winter gift bag, then just call us on **01923 372717** or email

[mandy@smallactsofkindness.co.uk](mailto:mandy@smallactsofkindness.co.uk)

'Warm in Winter' gift bags is one of several projects run by Small Acts of Kindness – a locally based social enterprise that sources and distributes gifts to older people in Hertfordshire.

We could not have done this without lots of extremely kind and generous help and support. We aim to never have to turn down a request for a gift bag and we hope that you might be able to help us achieve our aim.

Our projects are run entirely by volunteers and funded by donations and this coming winter we expect to be asked for over 2000 'Warm in Winter' gift bags. We would like to ask for your help.

### How can you help?

#### Donate

Each bag costs £25 to source and distribute and we welcome donations large and small towards these costs.

Or perhaps your business or someone you know could help us source the 1000s of sachets of coffee, tea, hot chocolate and instant soup that we put into our gift bags.

#### Volunteer

Our wonderful volunteers help pack and distribute all of our gift bags and we couldn't manage without them. Please contact us about corporate and individual packing days.



If you would like to know more about Small Acts of Kindness and how you can help, then please call Lynne Misner on **01923 372717** or email [lynne@smallactsofkindness.co.uk](mailto:lynne@smallactsofkindness.co.uk)


[www.smallactsofkindness.co.uk](http://www.smallactsofkindness.co.uk)

[@smallkindact](https://twitter.com/smallkindact)

[www.facebook.com/Smallactsofkindness.co.uk](https://www.facebook.com/Smallactsofkindness.co.uk)

Thank you for your support.





**CITIZEN'S ADVICE BUREAU**

Every Tuesday from 10am to 1pm.  
First Floor, The Radlett Centre.  
Sessions operate on a 'drop-in' basis. If required appointments can be made on **0844 826 9703**



# Radlett Archives Group

RAG (Radlett Archives Group) is now officially formed and a Constitution formally adopted. Officers include Stuart Nagler (Chairman), Pete Turner (Secretary), Roger Housechild (Treasurer) and Jan Adams (Press and Public Relations).

The formation of this group is a result of an initial group called the *Philip Eastburn and Radlett Archives Group*. Following Philip's unexpected death in August 2015, he bequeathed his irreplaceable collection of historical archives, maps, photographs and recordings to the community with the hope and expectation that a museum or permanent display would eventually transpire. This hope was something that Philip had worked towards for many years.

A presentation selected from the many exhibits, maps, prints and photos will be on display in the Apthorp Gallery, on the first floor at the Radlett Centre, from 1 to 31 December 2016.

Funding for this important project is urgently needed and applications have been made to various organisations for grants. Donations to the work and future expenditure of RAG should be sent to Roger Housechild, Treasurer at 24 Goodyers Avenue, Radlett WD7 8BA

Jan Adams

## Remembrance Sunday Services

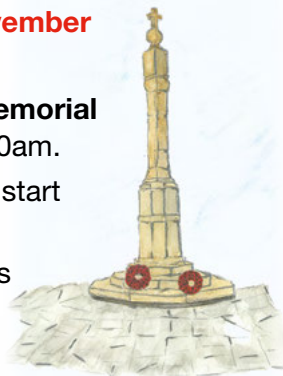
**Sunday 13 November 2016 at:**

### Radlett War Memorial

- gather at 10.30am.

The service will start at 10.45am.

The two minutes silence is at 11am.



### St John the Baptist, Aldenham

- gather at 10.40am at the War Memorial, The Green, Letchmore Heath.

The two minutes silence is at 11am.

A Communion Service will be held at the **St John the Baptist Church**, Aldenham at 8am and Evensong at 6pm.

## HMS Aldenham Service



**Sunday 11 December at 10.30am**

**The Guest Preacher is Right Revd Stephen Venner**

(Retired Bishop of the Armed Forces)

HMS Aldenham was a Hunt Class destroyer and, as with all other vessels of her type, she was named after a foxhunt and in her case, the *Aldenham Hunt* or the *Aldenham Harriers* as they later became.

HMS Aldenham was the last Royal Navy destroyer to be lost in World

War Two. She was sunk by a naval mine in the Adriatic Sea off Pag Island on December 14 1944. Each year the Royal Naval Association hold a Service of Remembrance to honour the 126 crewmen lost. It is held at St. John the Baptist Church on the nearest Sunday to that date.

## Bespoke Framing Service



### Gallery 105

105 Victoria Street  
St. Albans AL1 3TJ

Call Jean Dennis

**Tel: 01727 833557**

SERVICED OFFICES AVAILABLE IN  
RADLETT VILLAGE



We provide:

- Fully serviced self contained office suites both short and long term licences.
- Consulting room available half or full day basis.
- Onsite parking and visitor parking.
- Close to Radlett station.

t: 0845 872 4949 e: info@thecornworks.co.uk

Call in and see us at:

The Corn Works, Station Road,  
Radlett, Hertfordshire, WD7 8JY

www.thecornworks.co.uk

**RADLETT LAWN TENNIS AND SQUASH CLUB**



425 Watling Street, Radlett, Herts, WD7 7JG

**WELCOMES PLAYERS  
ALL AGES AND ABILITIES**

Membership Enquiries

admin@rltsc.co.uk

01923 854523

www.rltsc.com

**4 Glass Back Squash Courts  
11 Tennis Courts (6 Floodlit)**

Club, District and County Leagues  
Social Tennis & Squash  
Coaching for all Abilities

Friendly Bar  
Social Functions  
Club Tournaments

The Radlett Lawn Tennis and Squash Club, Registered Charity No. 1117605





Émile Leon  
Cammaerts CBE

## ÉMILE LEON CAMMAERTS CBE 1878 – 1953

The plaque pictured right was placed on the wall of Christ Church, Radlett following the death of Émile Leon Cammaerts in 1953.

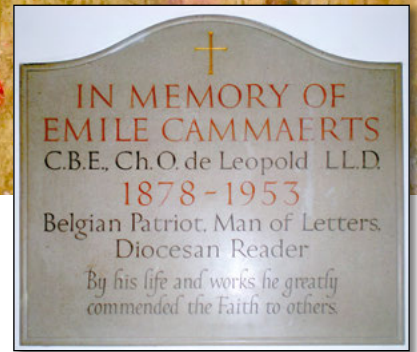
He was born in Brussels on 16 March 1878 and settled in Radlett in 1908 aged 30 years. He was a fiercely patriotic Belgian, keen royalist, poet, writer and playwright. He is the grandfather of Michael Murpurgo, the author of many books including the acclaimed *War Horse*.

He married the Shakespearian actress Helen Tita Braun (stage name Tita Brand) and they lived in a house called *Eyrie*, at 3 Hillside Road, Radlett, which at the time was two flats; the Cammaerts occupied the ground floor, with Ken and Mary Blackburn occupying the top floor. Ken later became Vicar of Radlett in 1948.

Émile had six children, one of whom, Pieter, tragically died in WWII while serving in the RAF. He was 21 years of age. Pieter is buried in Radlett churchyard (together with his father and mother) and his name appears on the Radlett War Memorial.

Pieter's brother, Francis Cammaerts, was a pacifist but following the death of his brother he felt he could no longer stand aside and being fluent in French joined the SOE (*Special Operations Executive*) and spent most of his time in France. He became a Lieutenant Colonel and was awarded the DSO (*Distinguished Service Order*). In 1958 Eamonn Andrews surprised Francis in the 'This Is Your Life' TV programme.

During the First World War, Émile wrote the poems that gave him the greatest audience – 'Belgian Poems' (1915), 'New Belgian Poems' (1917) and 'Messines and other poems' (1918). Cammaerts' poem 'Après Anvers' (*After Antwerp*) was translated from French to English by Tita with music composed by Sir Edward Elgar and retitled 'Carillion'. The London Symphony



Orchestra first performed it in concert in 1914 and the work was hailed as one of the greatest successes of WWI.

He became Professor of Belgium Studies and Institutions at London University in 1933 and Professor Emeritus in 1947. He was awarded a CBE. He died on 2 November 1953 in Radlett.

Jan Adams

Michael Murpurgo was inspired to write *War Horse* by the stories of sacrifice and valour as told to him by his grandfather, his mother and more latterly by three men who lived in his home village of Iddlesleigh in Devon who had all served in WWI. They told of their memories of their time in the trenches, of being gassed, the horror and the fear, the cold and the mud and of the camaraderie and the longing for home. Horses played a very important role in WWI and as many horses as men died in the conflict. This inspired Michael Murpurgo to write the story through the eyes of a horse that he called 'Joey'.

Michael Murpurgo and his 'War Horse', inspired by tales he heard from his grandfather Émile Leon Cammaerts, mother Tita and three Devonshire WWI veterans.



**Remembrance Sunday this year is on Sunday 13 November (please see details on page 6).**

### Radlett Art Society

This Autumn, the 50th year of the Radlett Art Society, we continue our weekly Thursday workshop, starting on 29 September.

We are sad to hear of the death of Tony Jennings. Tony had been a very active, supportive member of the Art Society for many years, a talented painter and an energetic contributor. Many times he hosted us in his lovely garden for sketching. He is greatly missed by us all and by many members of the Radlett community for his good works.

**Visits:** Sunday 27 November to Waddesdon Manor to see the Celebration of Winter Light, all festively decorated. Depart Radlett Post Office at 12.45pm. Return to Radlett at 6.30pm. Places are still available. If you would like to join us on this magical trip please call Carmen on 01923 854567.

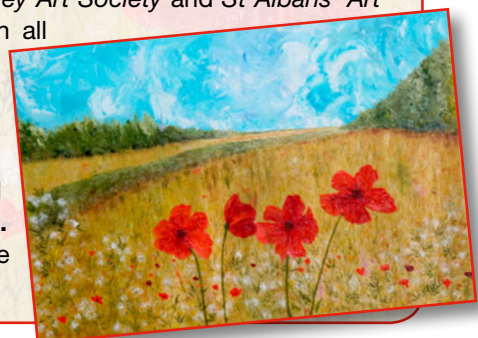
Our lectures and visits continue and can all be seen in our new Calendar of Events, [www.radlett-art-society.co.uk](http://www.radlett-art-society.co.uk).

Carmen Beal, Chairman,  
Radlett Art Society

### 'Poppies' by Inga Armstrong

Our thanks go to local artist Inga Armstrong for allowing us to use her painting to accompany this article. Inga is a member of the Radlett Painting and Drawing Group, the Watford and Bushey Art Society and St Albans' Art Society. She paints in all

forms of media, her favourite being pet portraits that she likes to do in pastel. To contact Inga email [armstronginga@aol.com](mailto:armstronginga@aol.com) or telephone 07887 792113.







# ALDENHAM PARISH COUNCIL

[www.aldenham-pc.gov.uk](http://www.aldenham-pc.gov.uk)

Each Aldenhams Parish Councillor now has their own email address as follows:

## ALDENHAM EAST



**Councillor Gill Balen** – [cllr.gill.balen@aldenham-pc.gov.uk](mailto:cllr.gill.balen@aldenham-pc.gov.uk).  
Chairman of the Around Radlett Working Party  
Member of the Planning Committee  
Member of the Community Development and Engagement Committee  
\*Trustee of the Gravel Allotments Trust  
\*Trustee of Platt Subsidiary Foundation  
\*Radlett Village Institute



**Councillor Viv Charrett** – [cllr.viv.charrett@aldenham-pc.gov.uk](mailto:cllr.viv.charrett@aldenham-pc.gov.uk).  
Chairman of the Planning Committee  
Member of the Parks and Open Spaces Committee  
Member of the Finance and General Purposes Committee  
Neighbourhood Plan Steering Group  
Member of the Around Radlett Working Party  
\*Aldenhams Alms Houses



**Councillor Saleem Khawaja** – [cllr.saleem.khawaja@aldenham-pc.gov.uk](mailto:cllr.saleem.khawaja@aldenham-pc.gov.uk).  
Member of the Planning Committee



**Councillor Jackie Lefton** – [cllr.jackie.lefton@aldenham-pc.gov.uk](mailto:cllr.jackie.lefton@aldenham-pc.gov.uk).  
Chairman of Finance and General Purposes Committee  
Member of the Planning Committee  
Member of the Community Development and Engagement Committee  
\*Trustee of the Radlett Centre Trust



**Councillor Neil Payne** – [cllr.neil.payne@aldenham-pc.gov.uk](mailto:cllr.neil.payne@aldenham-pc.gov.uk).  
Chairman of the Council  
Chairman of the Strategic Planning Committee  
Neighbourhood Plan Steering Group  
Member of the Planning Committee  
Member of the Finance and General Purposes Committee  
\*Trustee of the Radlett Centre Trust



**Councillor Lee Wood** – [cllr.lee.wood@aldenham-pc.gov.uk](mailto:cllr.lee.wood@aldenham-pc.gov.uk).  
Member of the Planning Committee  
Member of the Parks and Open Spaces Committee

\*Members of outside organisation

## ALDENHAM WEST



**Councillor Tony Butwick** – [cllr.tony.butwick@aldenham-pc.gov.uk](mailto:cllr.tony.butwick@aldenham-pc.gov.uk).  
Member of the Parks and Open Spaces Committee  
Member of the Community Development and Engagement Committee  
Member of the Strategic Planning Committee



**Councillor Ben Evans** – [cllr.ben.evans@aldenham-pc.gov.uk](mailto:cllr.ben.evans@aldenham-pc.gov.uk).  
Vice Chairman of the Community Development and Engagement Committee  
Member of the Parks and Open Spaces Committee  
\*Aldenhams Alms Houses



**Councillor David Lambert** – [cllr.david.lambert@aldenham-pc.gov.uk](mailto:cllr.david.lambert@aldenham-pc.gov.uk).  
Member of the Strategic Planning Committee  
\*Elstree Airport Consultative Committee  
\*Aldenhams Country Park  
\*Aldenhams Memorial Hall  
\*Trustee of the Gravel Allotments Trust



**Councillor Estelle Samuelson** – [cllr.estelle.samuelson@aldenham-pc.gov.uk](mailto:cllr.estelle.samuelson@aldenham-pc.gov.uk).  
Chairman of the Community Development and Engagement Committee  
Vice Chairman of the Planning Committee  
Member of the Strategic Planning Committee  
Member of the Finance and General Purposes Committee  
Member of the Around Radlett Working Party  
Neighbourhood Plan Steering Group  
\*Vice Chairman of the Radlett, Aldenhams and Bushey Community Safety Partnership



**Councillor Garry Walton** – [cllr.garry.walton@aldenham-pc.gov.uk](mailto:cllr.garry.walton@aldenham-pc.gov.uk).  
Chairman of the Parks and Open Spaces Committee  
Member of Planning Committee  
Member of Finance & General Purposes Committee  
\*Radlett Village Institute



**Councillor Chris Wilkins** – [cllr.chris.wilkins@aldenham-pc.gov.uk](mailto:cllr.chris.wilkins@aldenham-pc.gov.uk).  
Vice Chairman of the Council  
Vice Chairman of the Parks and Open Spaces Committee  
Vice Chairman of the Strategic Planning Committee  
Vice Chairman of the Finance and General Purposes Committee  
Member of the Community Development and Engagement Committee  
Member of the Around Radlett Working Party  
\*Radlett Village Institute  
\*RAIFA Management Committee

## Parish Council Offices

Aldenhams Parish Council, 1st Floor, The Radlett Centre, Radlett.  
Tel: **01923 856433**

All parish councillors can be contacted through the council office.

Office Opening Hours: **Monday to Friday 10am-2.30pm**  
Parish Council Manager: **Peter Evans**  
Email: [manager@aldenham-pc.gov.uk](mailto:manager@aldenham-pc.gov.uk)

Outside these hours, in case of emergency please contact **07833 251 115**.

Email addresses for the office are:  
Emails for all APC councillors – [councillors@aldenham-pc.gov.uk](mailto:councillors@aldenham-pc.gov.uk)

For **Peter Evans**, Parish Council Manager – [manager@aldenham-pc.gov.uk](mailto:manager@aldenham-pc.gov.uk)

For **Monika Duong**, Accounts Officer – [accounts@aldenham-pc.gov.uk](mailto:accounts@aldenham-pc.gov.uk)

For **Paula Paley**, Planning Officer – [planning@aldenham-pc.gov.uk](mailto:planning@aldenham-pc.gov.uk)

For **Manisha Kotecha**, Parks and Open Spaces Officer – [parks@aldenham-pc.gov.uk](mailto:parks@aldenham-pc.gov.uk)

For **Claire Larkin**, Community Development and Engagement Officer (also events/social media/website and anything relating to 'Around Radlett') – [community@aldenham-pc.gov.uk](mailto:community@aldenham-pc.gov.uk)



### Oliver Dowden, MP for Hertsmere

Your local MP Oliver Dowden holds regular surgeries around the constituency. If you would like to arrange an appointment then please call **020 7219 6239** or email: [oliver@oliverdowden.com](mailto:oliver@oliverdowden.com)

## Forthcoming Committee Meetings November 2016 – February 2017

Contact the Parish Council office for times of meetings.

### November

Thurs 2 Parks & Open Spaces  
Mon 7 Planning  
Tues 15 Full Council  
Mon 21 Planning

### December

Thurs 1 Community Development & Engagement  
Mon 5 Planning

Tues 6 Finance & General Purposes  
Tues 13 Full Council  
Mon 19 Planning

### January

Tues 3 Planning  
Wed 4 Parks & Open Spaces  
Fri 6 Strategic Planning  
Tues 10 Finance & General Purposes

Mon 16 Planning  
Tues 17 Full Council

### February

Thurs 2 Community Development & Engagement  
Mon 6 Planning  
Mon 20 Planning  
Tues 21 Full Council

## Hertsmere Borough Council

### Aldenhams East

Councillor John Graham  
[cllr.john.graham@hertsmere.gov.uk](mailto:cllr.john.graham@hertsmere.gov.uk)

Councillor Charles Goldstein  
[cllr.goldstein@hertsmere.gov.uk](mailto:cllr.goldstein@hertsmere.gov.uk)

### Aldenhams West

Councillor David Lambert  
[cllr.david.lambert@hertsmere.gov.uk](mailto:cllr.david.lambert@hertsmere.gov.uk)

Minutes from the Committee meetings are uploaded to the website once they have been approved and signed by the Chairman of the relevant committee. Please see all dates, agendas and minutes for Council meetings on [www.aldenham-pc.gov.uk](http://www.aldenham-pc.gov.uk)

Councillor Caroline Clapper  
[carolineclapper@hertscc.gov.uk](mailto:carolineclapper@hertscc.gov.uk)

## Hertfordshire County Council

Caroline Clapper – [carolineclapper@hertscc.gov.uk](mailto:carolineclapper@hertscc.gov.uk)

## DISCLAIMER

The words written in the articles contained in this edition are the authors own. No responsibility can be accepted for errors or omissions.

All copy correct at the time of going to press. Edited and Produced by Aldenhams Parish Council, The Radlett Centre, Aldenhams Avenue, Radlett, WD7 8HL





# ALDENHAM PARISH COUNCIL

[www.aldenham-pc.gov.uk](http://www.aldenham-pc.gov.uk)

## Summertime Activities 2016

Aldenhams Parish Council (APC) would like to thank everyone who attended our Summertime Activities which were run every Tuesday throughout August at Phillimore Recreation Ground.

Children of all different ages were treated to a range of free activities.

The Sure Start organisation provided 'messy play' for the very young, who could also get their face painted and join in with the circus skills. The bouncy castle was extremely popular too.

Child UK ran sporting activities for those over six years old, which included cricket, volleyball, frisbee, football, team games and lots more. There were also sessions of 'street dancing' to keep everyone occupied throughout the day.

Despite getting off to a sticky start with torrential rain for the first Tuesday session, happily for the next four weeks participants were treated to glorious

### Sure Start



weather.

Hundreds of Radlett youngsters enjoyed the activities on offer and were delighted to have somewhere to go and something to do locally.

APC would like to thank Affinity Sutton for their invaluable contributions towards the funding of this event.

If you have any feedback about the Summertime Activities APC would love to hear from you. Please contact Claire Larkin by email on [community@aldenham-pc.gov.uk](mailto:community@aldenham-pc.gov.uk).

*Claire Larkin*  
Community Development and  
Engagement Officer



## Christmas Tea with Carols

Aldenhams Parish Council will be holding a Christmas themed tea and coffee afternoon with carol singing on Thursday 8 December at Edge Grove School in Aldenhams. The event will start at 1.30pm and end at 3.00pm.

Places will be limited so if you are interested in attending this free special festive occasion

please call Claire Larkin in the APC office on **01923 856433** or email [community@aldenham-pc.gov.uk](mailto:community@aldenham-pc.gov.uk) for a ticket to this event.

Transport is generously being provided free of charge by Edge Grove.

*Claire Larkin*  
Community Development and  
Engagement Officer

## Advertising

Should you wish to be added to the waiting list for the 2017 editions, please email your details to [community@aldenham-pc.gov.uk](mailto:community@aldenham-pc.gov.uk). The cost for advertising in all 3 editions throughout the year is £135.00 for an inside advert and £150.00 for a back page advertisement.



## RADLETT YOUTH COUNCIL

The Radlett Youth Council (RYC) is a vibrant and dynamic group of 11–18 year olds living in the Parish of Aldenhams, who meet regularly to discuss local issues relevant to their age. Meetings normally take place once every three weeks with a Councillor and an Officer in attendance.

As well as discussing matters important to them, such as the extension of the Oyster Card to Radlett Station and the possible introduction of free Wi-Fi to the centre of Radlett, members also arrange local events such as the successful Radlett cycle day which took place last year.

The Youth Council is looking for new members who possess qualities such as enthusiasm, good communication skills, the ability to work well within a group, an understanding of the issues which face young people today and the availability to attend and contribute to regular Youth Council meetings.

If you are interested in learning more about the Radlett Youth Council please contact Claire Larkin on [community@aldenham-pc.gov.uk](mailto:community@aldenham-pc.gov.uk) or call **01923 856433**. RYC would love to hear from you!

*Councillor Estelle Samuelson*  
Chair – Community Development  
and Engagement Committee







# ALDENHAM PARISH COUNCIL

www.aldenham-pc.gov.uk

## Aldenhams Parish Council Accounts 2015-16

Aldenhams Parish Council ("the Council") is required by statute to publish its annual accounts for the previous financial year. These are the final audited accounts both internally by Auditing Solutions Ltd and externally for the Audit Commission, by BDO Stoy Hayward. These are the final audited accounts.

### Income & Expenditure Account for the year ended 31 March 2016

2014-15	Income		2015-16
£			£
551,433	Precept	Note 1	564,619
6,288	Bank interest		6,749
43,372	Grants	Note 2	48,668
13,745	Fees from Council owned properties	Note 3	10,720
3,071	Newsletter	Note 4	2,350
5,871	Miscellaneous		7,718
–	Sale of Assets	Note 5	3,833
19,700	Section 106	Note 13	48,915
<b>643,480</b>	<b>Total Income</b>		<b>693,572</b>
	<b>Expenditure</b>		
156,818	Administration	Note 6	184,766
133,105	Grants	Note 7	127,104
40,107	Capital Spending	Note 8	166,889
203,980	Parks & Open Spaces	Note 9	175,124
15,305	Newsletter	Note 4	16,034
8,511	Newberries Car Park subsidy	Note 10	8,511
44,178	Community Development	Note 11	48,908
1,674	Miscellaneous		1,612
6,594	Radlett Neighbourhood Plan	Note 12	16,762
<b>610,272</b>	<b>Total Expenditure</b>		<b>745,710</b>
	<b>Funds balance represented by:</b>		
491,626	Balance brought forward as at 1 April 2015		524,834
33,208	Excess of income over expenditure for the year		
–	Excess of expenditure over income		52,138
<b>524,834</b>	<b>Balance carried forward as at 31 March 2016</b>		<b>472,696</b>

### The reserves currently held by the Council are comprised as follows:

General Reserves.....	224,211
Earmarked Reserves (for certain Council projects).....	135,570
Capital Reserves (which can only be used on capital projects).....	112,915
<b>Total</b>	<b>472,696</b>

**Note 1 – Precept:** This is the amount of your Council Tax that is allocated to Aldenhams Parish Council.

**Note 2 – Grants:** This includes monies received from Central Government towards the continuing work on the Radlett Neighbourhood Plan. Hertsmere BC again paid a grant of £19,748 towards recompensing Aldenhams Parish Council for Central Government's decision in 2014 to change the Council Tax benefit scheme.

There were also grants from Hertsmere BC & Herts CC ward councillors who have paid towards the Radlett Youth Council cycle event, and some new noticeboards around the parish.

Aldenhams Parish Council received funding under the 'Tesco bags for help' scheme and with grants from Hertsmere BC & Herts CC ward councillors a new slide was installed at Phillimore Recreation Ground.

The Radlett Festival committee continued their support by granting funds towards more benches in Phillimore Recreation Ground.

There were also monies received from Affinity Sutton and private donations towards the Limitless Event in the Summer.

The War Memorial Trust gave a grant towards restoration works on Letchmore Heath War Memorial.

**Note 3 – Fees from Council owned properties:** Income derived from the hire of the allotments, leases for Radlett Bowls Club, stalls at the Winter Fair and for use of council land for filming etc.

**Note 4 – Newsletter:** Advertising income generated by 'Around Radlett' and the production costs.

**Note 5 – Sale of Assets:** APC has sold surplus equipment, as Radlett Bowls Club is maintaining the green itself now.

**Note 6 – Administration:** Planning, Accounts and management staff costs and other overheads. These have increased due to election costs in May 2015 and as a result of a staffing review carried out by an independent HR consultant.

**Note 7 – Grants:** Paid to groups to provide entertainment, (mainly the Radlett Centre Trust) and for the Citizens Advice service at the Radlett Centre. Other grants are made to some local groups to enable them to continue their good work.

**Note 8 – Capital Spending:** Projects this year included replacement noticeboards at Letchmore Heath and The Radlett Centre, new slide in Phillimore Recreation Ground play area. APC also expanded the Christmas lights into the trees in Watling Parade.

There were also the purchase of a shredder for the green waste.

Larger projects included works in Phillimore Rec where a new toilet block was installed including new sewage pipework to Gills Hill (some of which was also funded through Section 106 monies) and the demolition of the pavilion.

**Note 9 – Parks & Open Spaces:** All costs associated with maintaining the open spaces owned/leased by the Council,

including administration, repairs and maintenance. Again there is a reduction in costs as fortunately there was less emergency work on the trees, as work had been carried out on good maintenance in previous years. Also a member of the Groundstaff moved to pastures new and it was agreed to replace him with an apprentice.

**Note 10 – Newberries Car Park Subsidy:** This is the parking subsidy paid to Hertsmere Borough Council to provide the first hour free facility in the Car Park behind the shops on Watling Street.

**Note 11 – Community Development:** All costs associated with engaging with the community such as website, administration, the Winter Fair, Limitless and other community events.

**Note 12 – Radlett Neighbourhood Plan:** These are the on-going costs so far for producing Radlett's first Neighbourhood Plan, which should be published in 2016/7.

**Note 13 – Section 106 funds:** These are funds that are paid to Hertsmere Borough Council by developers and are a condition of any planning permission granted. In Section 106 these funds must be spent on specific projects.

I hope you have found this summary useful. If you have any queries or wish to see the actual accounts, please do not hesitate to contact me.

Peter Evans,  
Parish Council Manager





# ALDENHAM PARISH COUNCIL

[www.aldenham-pc.gov.uk](http://www.aldenham-pc.gov.uk)

## The Green, Green Grass of Home

An article, entitled *"It's time to stand up for our parks"*, in a national newspaper prompted me and some of my Parish Council (APC) colleagues to reflect on how lucky we are. The article stated: *"Public funding for parks has been reduced by more than any other public service – by up to 60% in some boroughs"*. In Aldenhams Parish we are fortunate to have a number of verdant public spaces and a dedicated team of ground staff to look after them.

Top of our list of verdant public spaces is Phillimore Recreation Ground, popularly known as 'the Rec'. Located on the Watford side of Radlett – with entrances off Gill Hill, Gills Hill Lane, Gills Hollow, Letchmore Road and Aldenhams Avenue – the Rec offers a playground with apparatus for children of all ages, a public tennis court, a multi-use games area – ideal for small games of football or basketball, a refreshment kiosk, public toilets, a large open area for energetic activity or simply relaxing and a small wood with a variety of trees and birds. Dog walkers are welcome but are, in the interest of the safety of others, expected to clean up and dispose of any mess and keep their dogs under control. Adjacent to the Rec are allotments with 94 plots, of varying sizes, which are available for renting by local residents. For several years, the Radlett Horticultural Society has arranged an Open Day. In 2015, nearly 300 people attended and £1,222 was raised for the National Garden Scheme's chosen charities.

An even larger verdant public space is King George V playing fields, with entrances off Watling Street and Theobald Street. KGV is the home of Radlett Cricket Club and Tabard Rugby Club. Both areas are open to the public,

although visitors should respect the facilities and keep dogs and children under control. The clubs are adjacent to the Rose Field, Salter's Field and the Picnic

Field, all of which are great for walking, running, picnicking or just mooching around. Other green spaces include Radlett Gardens (in the centre of Radlett, next to the garage and Daisy's in the Park), Tykeside (next to Brook Court and opposite Highbridge Close), Aldenhams Green and the Green, the pond, the war memorial triangle and children's play area at Letchmore Heath.

All of these areas and more are maintained by our dedicated team of ground staff. They also prepare and maintain the very colourful hanging baskets in the centre of Radlett and look after the trees, hedges and flower beds at the Radlett Centre. The team members provide the knowledge and variety of skills necessary to maintain these areas to such an attractive standard.

Obviously all of this requires financing, which APC is currently able to provide – courtesy of the Parish Council precept which is collected as part of your Council Tax. APC is, however, always monitoring the availability of grants and was recently successful in obtaining a grant of £8000 from Tesco, out of their 'Bag for Help' scheme. This scheme is funded by the 5p charge for plastic carrier bags. The £8000, plus further contributions totalling £1,750 from our County and Borough Councillors from their Locality and Ward Initiative budgets, funded the purchase of a new slide for the children's play area at the Rec.

Reference to our good fortune in having so many green open spaces would not be complete without mentioning footpaths. There are many bridleways and footpaths in the parish. They are maintained by Hertfordshire County Council and can be used to explore – on foot, on horseback or by bicycle – the glorious open countryside in which we live. Copies of the Footpath map and the booklet 'Walks Around Radlett' can be purchased from the Parish Council offices.

For further information on any recreational matters within the parish, please contact Manisha Kotecha, Parks and Open Spaces Officer on **01923 856433** or by email at [parks@aldenham-pc.gov.uk](mailto:parks@aldenham-pc.gov.uk).

*Councillor Chris Wilkins*



The 'Daleks' at Tykes Water Gardens

## Memorial Seats for Phillimore Recreation Ground

The Parks & Open Spaces Committee recently approved a plan to place more seats in this area. The Council invites anyone who wishes to purchase seats that will look the same as the others but will have a plaque in memory of a loved one. For further details please contact Manisha on **01923 856433** or email on [parks@aldenham-pc.gov.uk](mailto:parks@aldenham-pc.gov.uk).

*Manisha Kotecha  
Parks and Open Spaces Officer*



## Allotment Plots Available

Allotments are a great way of growing your own healthy vegetables, fruits and herbs at a very competitive price. It's a great way to relax, get away from the stresses of daily life and meet new friends too. It provides a sense of achievement when you see the results of your efforts. Why not have a go at growing your own? We have a few allotment plots available. They cost £30.00 a year for a full plot and £15.00 for half a plot. If you are interested in having your own allotment please contact Manisha on **01923 856433** or email [parks@aldenham-pc.gov.uk](mailto:parks@aldenham-pc.gov.uk).

*Manisha Kotecha  
Parks and Open Spaces Officer*



The childrens play area, featuring the new slide.





The comprehensive guide  
'Recycling-in-Hertsmere.pdf'  
is available to download  
from the website  
[www.hertsmere.gov.uk](http://www.hertsmere.gov.uk)



## Let There Be Light...

As many of you may recall only some of the trees in Newberries Parade, Watling

Street, were able to be lit up for the festive period at the end of 2015. This was because there was no electrical connection to the remaining trees in the part of the parade opposite the Radlett Centre.

However, I am pleased to inform the community that Aldenham Parish Council has set aside some funding so that work can be carried out in the next

few weeks by Hertfordshire Highways to run cabling to those trees. This will enable the company 'Lamps and Tubes' to put lighting into the trees ready for the forthcoming festive period at the end of 2016.

Hopefully, this work will be done in time for the 'switch on' which will take place at the 'Winter Fair' on Sunday 27 November.

We are sure that Newberries Parade will look very attractive during this time and will help to encourage the local community to shop locally.

*Estelle Samuelson*  
*Chair – Community Development and Engagement Committee*

## Keep it right

Please make sure you know what goes in what bin. Paper goes in the blue box only. Garden and food waste goes in the green bin only. All other recyclables like glass, cartons, plastic bottles, cans and cardboard go in the brown bin. Everything else can go in the black bin and remember, if in doubt, leave it out!

*Jenna Bates, Recycling Officer,  
Hertsmere Borough Council*



## Radlett Neighbourhood Plan

The Radlett Neighbourhood Plan is progressing, but the process is taking longer than

anticipated.

Firstly, a summary as to where we are. After some initial consultation, including a residents' survey in February 2015, an Organising Meeting was held in the Radlett Centre in May 2015. A Steering Group, which includes volunteers and some Parish Councillors, was established. In addition, Working Groups were formed with responsibility for reviewing the following areas:-

- Housing and Development
- Roads, Transport and Parking
- Green Belt
- Civic Amenities, Infrastructure and Community Resources

The scope of the Working Groups was very much determined by the views of residents expressed as a result of the survey in February 2015. Nearly 900 responses were received, representing almost thirty percent of residents – a significant response in survey terms. The highest priorities amongst residents

are for:-

- Preservation of the Green Belt
- Retaining the verdant nature of the Village
- Improving public transport
- Better parking facilities
- Providing more smaller houses

The Working Groups met regularly to discuss the issues and develop the policies and evidence case which will go into the draft Plan. At a fairly early stage, the Housing and Development group decided that it would be advantageous to have a Character Assessment. This was prepared by a technical expert concerning the housing and development in the Village. The assessment was carried out by Dr Garyfalia Palaiologou, working under the supervision of local resident, Professor Laura Vaughan, who was on the Steering Committee at the time. The Character Assessment is a key piece of the evidence base in relation to the proposed Housing and Design policies, which it is hoped will go into the Plan.

At the Annual Parish Meeting in March this year, a presentation was made to the progress made on the Neighbourhood

Plan. In addition, display boards were put up in the foyer of the Radlett Centre showing the outline draft policies being proposed by the Steering Group. Those attending the meeting were supportive of the direction of travel being adopted.

Unfortunately, the work of the Steering Group was affected by the resignation of our previous consultant, Claire Wright, who had decided to give up her practice. She had been most helpful in the early stages of the project. Luckily we have recruited a very able replacement, Angela Koch, who is most experienced in the field of neighbourhood plans. She has reviewed the progress made, commented most favourably on the Character Assessment, and made some suggestions as to how to move the production of the Plan forward. Members of the Steering Group are now working on these suggestions.

It is acknowledged that the initial timeframe for the project was far too optimistic. A new timeframe is being prepared, which will include a process of public consultation and an independent examiner review.

*Neil Payne*  
*Chairman – Neighbourhood Plan Steering Group*



# Emma Wiggs – Five Times Paralympic World Champion

Congratulations to Emma Wiggs on winning a gold medal on the beautiful Lagoa in the city of Rio. In all, the canoeing team won five gold medals and GB canoeing is right to be proud of their achievement; this is the first time that their sport has been introduced to the Paralympic Games. They are now looking ahead and will be training hard for the Games in Japan in 2020.

Emma's proud family, her mother Annie, with other family members and close friends travelled to Rio to cheer Emma and her teammates on. Her grandmother, May Wiggs aged



Emma wins gold at the Paralympics

93 years from Letchmore Heath sat close to the television set, they are all delighted with this wonderful achievement.

Annie Wiggs  
(mother)

Left: Proud Grannie,  
May Wiggs wears  
Emma's gold medal.

## The Red House Patients update

It is six months since the new PPG (Patient Participating Group) was reformed. It is tasked to influence future policies and decisions made by the practice and to improve the quality of services offered.

We represent you, the 20,000 patients, and we need to communicate with you and get feedback on matters of concern but not complaints; that is a separate process. A questionnaire is currently being prepared for your views on certain issues and we

would like to hear whether you are happy with the practice opening hours, the new parking signage in the Radlett car park and how to make the reception area more welcoming.

Missed appointments are a major concern, 1696 were missed in the six months to August. If you don't require your next appointment please contact your local surgery to cancel.

To relieve ever growing pressure on the practice, we all must take responsibility for our own health where we can. We are fortunate to have a practice that is highly regarded by residents and we need to maintain that standard and look to improve even more.

Any communications should be sent FAO the PPG on [redhousegroup@nhs.net](mailto:redhousegroup@nhs.net).

Stuart Nagler  
Chairman



### The Opportunity

The Radlett Centre is a vibrant theatre which offers opportunities to both professional shows and local amateur dramatic societies. There are also meeting rooms on the first floor which are various sizes, allowing flexibility in terms of capacity and fee income.

The Centre shows local artists' work and is regularly used by music clubs and community groups. It also houses the local council offices, as well as surgeries for the police, citizens advice bureau and blood donors.

## Radlett Centre Board Trustee (Voluntary)

### Skills and Qualification

A good team player. The Radlett Centre Board are looking to enhance the skills on the Board, and is particularly keen on any person who has business accountancy experience. Willingness to participate in debates on issues, and forward thinking.

### The Organisation

The Radlett Centre Board has nine trustees which administers the charity. The main board meets five times a year to discuss policy and review the budgets etc. Working groups are appointed where specific issues need to be researched by a small group. The board have also appointed a General Manager who has delegated authority for operational matters, including bookings, finance and employment.

For help with completing this application or for further information contact The Company Secretary Peter Evans on **01923 856433** or email **co.secretary@radlettcentre.com**.

The Radlett Centre Trust endorses equal opportunities in all aspects of recruitment and working practices. We are particularly looking for individuals with experience and skills in the following areas:

- Small Business accounts.

You should be aware that this is the first stage of your application process. If accepted by the Nominations Committee, you will be recommended as a nominated candidate to the members.

It is anticipated that this will take place in or around the end of November 2016.





The Centenary Cup for Best Front Garden was awarded to Matthew Bolshaw of Letchmore Heath for this wonderful display



## Radlett Horticultural Society Autumn Show 2016



On Saturday 3 September the Radlett Horticultural Society held its annual show. Despite the difficult summer we have experienced, with an extremely wet June and particularly dry July, there were over 400 entries. A stunning display of flowers were entered and although there were a reduced number of entries in the produce section, there were some fantastic onions, carrots and a beautiful display for top tray which was won by Hugh Young.

There were also a good number of photographic entries; there are several 'David Baileys' in the making with Mark Dougan winning the Paul Balen Cup.

The floral art entries were of a very high

standard and Cheryl Clark won the Certificate of Floral Art with her 'Gift Wrapped' floral arrangement.

The Domestic classes were impressive and new classes were well supported with a decorated cake, bread, white and brown and homemade biscuits of your choice all attracting interest. The Best Domestic exhibit was won by Beryl Cushion with her homemade biscuits.

The Newberries Plaque was awarded to Emerson Newman and Sarah Glover was presented with the Phillimore Plaque for her entries, although there were a reduced number of children's class entries this year. We hope that this will increase in future shows with a little encouragement from the older members, local schools and parents.

### Best Front Garden 2016

The Centenary Cup for the 'Best

Front Garden' in Aldenham Parish – comprising Aldenham village, Letchmore Heath, Round Bush and Radlett – has this year been awarded to Matthew Bolshaw of 'Chipperfield', Back Lane, Letchmore Heath. He was runner-up in 2010.

Jane Phipps

### RHS Forthcoming events

**Wednesday 16 November @ 7:30pm** the AGM & talk at Vision Hall, Christchurch. The AGM will start at 7:30 and will follow with a talk "Say it with Poison" by Russell Bowes.

The Store in Scrubbitts Park Road will continue to be open until **Sunday 27 November** – opening hours are 10.00am until 12.00pm.

## Flats in Scrubbitts Square

Bobby Phillimore was born in 1871, lived at Kendals Hall, and together with his family owned nearly half of Radlett's acreage.

On Thursday 7 July 1898, at an auction held in a marquee on the estate, about two hundred acres of land to the west of Watling Street was divided into separate plots and put up for sale. The sale details named two new roads Aldenham Avenue and The Cross Path. Prices for the 58 plots ranged from £125 for a prime site in Watling Street, £115

per plot in Aldenham Avenue, £30-£50 per plot in The Cross Path and £25-£30 per plot in Watford Road.



Subsequently, the Kendals Estate Office was set up to continue the sale of these plots. The premises were built as an octagonal building on the triangle of Scrubbitts Park Road. When the estate office was no longer required it became a small local convenience and general store.

As part of the development plan, Bobby Phillimore laid out an area to be called Scrubbitts Square, named after the old Scrubbitts Wood that he had previously given to the people of Radlett. In Scrubbitts Square he built blocks of flats to be let out at low rents to local people who worked as agricultural and railway workers. For many years these flats served a useful purpose in an otherwise middle-class area. In the passage of time these flats became decrepit and were not fit for modernisation. Additionally, they were architecturally unusual in as much as the staircases were built on the outside of the flats. Local people said it was because the architects forgot to put the staircases on the inside so they had to



put them on the outside instead.

In 1926 the Phillimore family ceased to live at Kendals Hall and over the years the mansion and grounds were leased to various wealthy families. In 1980 it became the Radlett Preparatory School.

In the 1970's the flats were demolished and replaced by the present-day flats, some of which are privately owned and others are managed by a housing association based in Hemel Hempstead. Today, the road leading from The Cross Path, which diverts to the right, is known as Scrubbitts Park Road, to the left it is The Dell and leads into Woodfield Road.

Jan Adams





## Our local PCSO

*Hello Residents,*

With the approach of the darker evenings and the rush towards the festive season, please be aware that houses and vehicles can become targets and by taking a little time we can help prevent you becoming a victim of a crime.

Inside Leave lights on or use a time switch, don't leave any gifts in full view of ground floor windows

Outside Secure any ladders and consider security lights

Always Take your valuables out of vehicles and ensure it's fully locked and alarmed if possible.

Always Protect pin numbers and passwords by keeping them to yourself

We run neighbourhood surgeries in Radlett Library and mobile 'beat surgeries' every month to discuss crime-related concerns with residents – please come along. Dates are as follows:

- Radlett Library – between 2.30pm and 4.30pm on 29/11 and 29/12

- In the village – between 2.30pm and 4.30pm on 12/11 and 2/12

Please visit [www.owl.co.uk](http://www.owl.co.uk) to sign up to this free service.



If you have any local policing issues you would like to discuss, please contact the Safer Neighbourhood Team by email at [sntbusheyandradlett@herts.pnn.police.uk](mailto:sntbusheyandradlett@herts.pnn.police.uk) or via the police non-emergency number 101. If you see a crime in progress, call 999 immediately.

**PCSO Tim Conway 6263**

## SAFER NEIGHBOURHOODS

Reducing crime, catching criminals and keeping people safe



Website Address: [www.herts.police.uk](http://www.herts.police.uk)

Neighbourhood

Police Team:..... **01707 354192**

Non Urgent Calls:..... **101**

Urgent Emergency Calls:..... **999**

Email:

[SNTBusheyandRadlett@herts.pnn.police.uk](mailto:SNTBusheyandRadlett@herts.pnn.police.uk)

Follow on: [twitter.com/RadlettPolice](https://twitter.com/RadlettPolice)



Radlett Neighbourhood Watch Co-Ordinator  
Angela Thomson  
email: [at@thomsons.co.uk](mailto:at@thomsons.co.uk)



Community Safety Partnership  
(Aldenham and Bushey)

Zoe-Louise Keyte

Hertsmere CSP

Civic Offices, Elstree Way,  
Borehamwood, Herts, WD6 1WA

email:

[partnership.support@hertsmere.gov.uk](mailto:partnership.support@hertsmere.gov.uk)

Phone: 020 8207 7801

## Food Waste in your Green Bin

During the hot weather, there have been some complaints about maggots in the green bins, due to food waste. It is worth reminding residents that the Parish Council carries a stock of Hertsmere's recyclable food waste bags and kitchen caddies to put them in. The dark green caddies are free from the Parish Council offices, and a large roll of bags costs £2.50. These should be tied up and put in the green recycling bins, but in very hot weather, can also go in the black bins to avoid a 2 week cycle.

The Parish Council offices are situated upstairs at the Radlett Centre. They also stock large paper bags for excess green garden waste at 50p each, which can be put outside together with the green bins.



## The Radlett, Aldenham and Bushey Community Safety Partnership (CSP)

Want to make a difference to your community? You can certainly do so by joining the Radlett, Aldenham and Bushey (RAB) CSP and having your say at one of its meetings.

The Radlett, Aldenham and Bushey CSP is specifically for residents of Radlett, Aldenham and Bushey and is a forum to receive local advice, updates and safety information. The CSP is made up of local organisations who work together to reduce crime and disorder to make Hertsmere an even safer place to live, work and visit. These organisations include Hertsmere Borough Council, Hertfordshire Constabulary, Hertfordshire Fire and Rescue Service and Neighbourhood Watch.

The CSP meetings are currently held three times a year and are an opportunity for residents to receive updates and find out what their local CSP is doing to create an even safer environment by tackling crime and disorder. The meetings are also an opportunity for residents to ask questions and raise any matters of community safety concern.

If you would like to join the Radlett, Aldenham

and Bushey CSP mailing list where you will receive information on upcoming meetings and events including agendas and minutes, please contact [partnership.support@hertsmere.gov.uk](mailto:partnership.support@hertsmere.gov.uk) or call **020 8207 7801** and let us know your name and postal address/email address.

Our independent Chair, Dr Raymond Coffey ([raymond.coffey@richardgerstl.com](mailto:raymond.coffey@richardgerstl.com)) and our vice-Chair, Cllr. Estelle Samuelson ([cillr.estelle.samuelson@aldenham-pc.gov.uk](mailto:cillr.estelle.samuelson@aldenham-pc.gov.uk)) will be delighted to welcome you to the next RAB CSP meeting, which will be announced shortly on the Aldenham Parish Council website [www.aldenham-pc.gov.uk](http://www.aldenham-pc.gov.uk), as well on the notice boards around the area.

In the meantime, please see your local PCSO contact details below, should you have any local concerns that they may be able to help with.

**PCSO Barry Lovegrove**

[Barry.Lovegrove@herts.pnn.police.uk](mailto:Barry.Lovegrove@herts.pnn.police.uk)

**PCSO Tim Conway**

[Tim.conway@herts.pnn.police.uk](mailto:Tim.conway@herts.pnn.police.uk)

Large & small

## Gem'll fix it

Just phone Gem on  
01727 872136  
Mobile: 07877 926130

Carpentry a speciality  
Electrics • Decorating • Plumbing  
Flat Packs • Plastering • Tiling  
Replacement Windows & Doors  
Bathrooms & Kitchens • Flooring  
- and outside work

Full Home Maintenance  
Park Street based  
Free estimates given  
References available

Virtually all jobs



Pip's Dent Removals Ltd

Paintless Dent Removals  
Call Pip for a quote on 07930366777

Minor dings and dents removed  
While u wait!  
Repairs significantly cheaper than  
bodyshop repairs.

End of Lease service, Scuff and  
wheel repair is also available.

Text or email a photo to  
pipellis@me.com for free  
advice and quote.

Over 25 years experience  
in the motor industry



## Safe and happy at Tomten Kennels, Cattery and Grooming Salon



Take the worry out of holiday arrangements by ensuring  
that your pets are in safe, professional hands.

15 London Road, Shenley  
www.tomten.co.uk Tel. 01923 856264



## The Oakridge Practice Footcare Clinic

HPC registered Podiatrist / Chiropodist  
01923 839 796

www.oakridgepractice.com

244, Radlett Road, Colney Street,  
St Albans, AL2 2EN

## NETHERCOTT

INDEPENDENT FAMILY FUNERAL  
DIRECTORS & MONUMENTAL MASONS  
OF DISTINCTION SINCE 1911

20 ALDENHAM ROAD,  
RADLETT WD7 8AX  
TEL: 01923 852899

98 SHENLEY ROAD,  
BOREHAMWOOD WD6  
TEL: 020 8953 9555



Radlett  
Physiotherapy

96 Watling Street, Radlett, Hertfordshire WD7 7AB

Tel: 01923 857338 Fax: 01923 857778

Website: www.radlettphysiotherapy.co.uk

Email: info@radlettphysiotherapy.co.uk

In pain? Don't be.

Come and see our specialist physiotherapists who can  
get you back to an active, pain free life.

### Physiotherapy treatment for:

- Neck and back pain
- Muscle and joint pain
- Sports injuries
- Whiplash
- Headaches
- Arthritis and chronic conditions
- Work-related injuries

### Additional Services:

- Pilates classes
- Over 60's fitness class
- Post op rehab
- Metafit classes
- Sports massage

## Why live with pain?

Treatments available include:

Sports injuries, Nerve/Sciatica Problems, Neck & Shoulder Pain,  
Tennis Elbow, Frozen Shoulder, Hip & Groin Pain, Back Pain,  
Arthritic Pains & Rheumatism, Wiplash & Cranial Osteopathy,  
Pregnancy Aches & Pains.

Radlett  
Osteopathic Clinic



Maria Matthews

New Road, Radlett WD7 8LX

tel: 01923 852259

web: www.radlettosteopathy.co.uk

## JB TV SERVICES

REPAIRER OF  
LCD/PLASMA/TV/VIDEO/AUDIO/DVD



SONY  
JVC  
Panasonic

- REPAIRS TO ALL MAKES & MODELS
- AUTHORISED REPAIRERS OF  
SONY, JVC, PANASONIC

TV/VIDEO/DIGITAL/TUNING/FREEVIEW  
INSTALLATION & SET UP  
TEL: 07961 420 535

## WRENS ELECTRICAL

DOMESTIC AND COMMERCIAL  
ELECTRICAL CONTRACTORS

Lighting Heating Sockets • Distribution Boards Inspection  
Fault Finding Electrical Reports • L.E.D.'s T.V. Fuse Boxes  
Part P Regs Immersion heaters • 3-phase Installations  
Oven repairs • Cat 5/6 cabling NICEIC test and inspect



RADLETT 01923 854907  
HARPENDEN 01582 762435  
www.wrenselectrical.co.uk  
email: martin.wren@sky.com

COMPLETE  
REWIRE  
& ALL ASPECTS  
OF ELECTRICAL  
WORK  
UNDERTAKEN



### CARPENTRY

KITCHENS & BATHROOMS  
FITTED WARDROBES  
CUSTOM MADE CABINETS  
DOORS SUPPLIED & FITTED

### FOR DECORATING

INTERIOR & EXTERIOR  
SPECIALIST PAINT EFFECTS  
WALLPAPER HANGING

WORKING IN RADLETT FOR  
OVER 15 YEARS

EXPERIENCED TRADESMAN  
REFERENCES AVAILABLE on REQUEST  
FOR A FREE QUOTATION & DESIGN ADVICE

CALL DAN on

07808 401678 or 01727 825691

Email: dacmaintenance@btinternet.com

## Ken Hodson

Local Computer Hardware & Software Repairs  
Upgrades and Advice for Home and Business

Ken Hodson Computer Services Ltd.

115 Tassell Hall, Redbourn, Herts. AL3 7JE

T: 01582 794723 M: 07974 156743

Email: enquires@kenhodsoncomputerservices.co.uk

www.kenhodsoncomputerservices.co.uk

- No fix, no fee for all repairs - you have  
nothing to lose.
- Low hourly rate.
- Most repairs carried out in your home, if  
not the computer will be picked up and  
delivered back to you.
- Upgrades of hardware and software.
- Friendly training and instruction available  
in plain English.
- Problems with Windows / Applications  
/ Games / Internet / networks fixed.
- Advice given on upgrades - many older  
computers can be upgraded at a fraction  
of the cost of a new machine.



INDEPENDENT,  
BESPOKE VETERINARY CARE



Ample Parking, Friendly Staff, Dog and Cat Waiting Rooms  
Free New Kitten/Puppy Checks, Dental Checks and Weight Clinics

Modern Facilities in  
a Traditional Setting

@ The Red Cow, 107 Radlett Road, Frogmore,  
Herts AL2 2LA www.halianvet.co.uk 01727 874700



## Locksmith SERVICES

Your local approved Locksmith  
CALL US FIRST FOR BEST PRICES

FULLY TRAINED LOCAL LOCKSMITHS  
(WE ARE NOT A CALL CENTRE)

- Lock Outs • OAP Discounts • Boarding Up •
- Security • Consultants • Police Vetted •

Fast Response Times -  
Usually within Half An Hour  
24 Hours 7 Days A Week No Call Out Charge

St Albans 01727 400 012	Harpenden 01582 206 399	Radlett 01923 375 234	Redbourn 01582 206 008
----------------------------	----------------------------	--------------------------	---------------------------



Paper used is from  
well-managed/sustainably  
managed forests



Designed and Printed by Caprin Printers

Unit 2, Park Industrial Estate, Frogmore, St. Albans, Herts, AL2 2DR.

T: 01727 872 021 W: www.caprin.co.uk

For all your print needs - give us a call!