



# Around Radlett

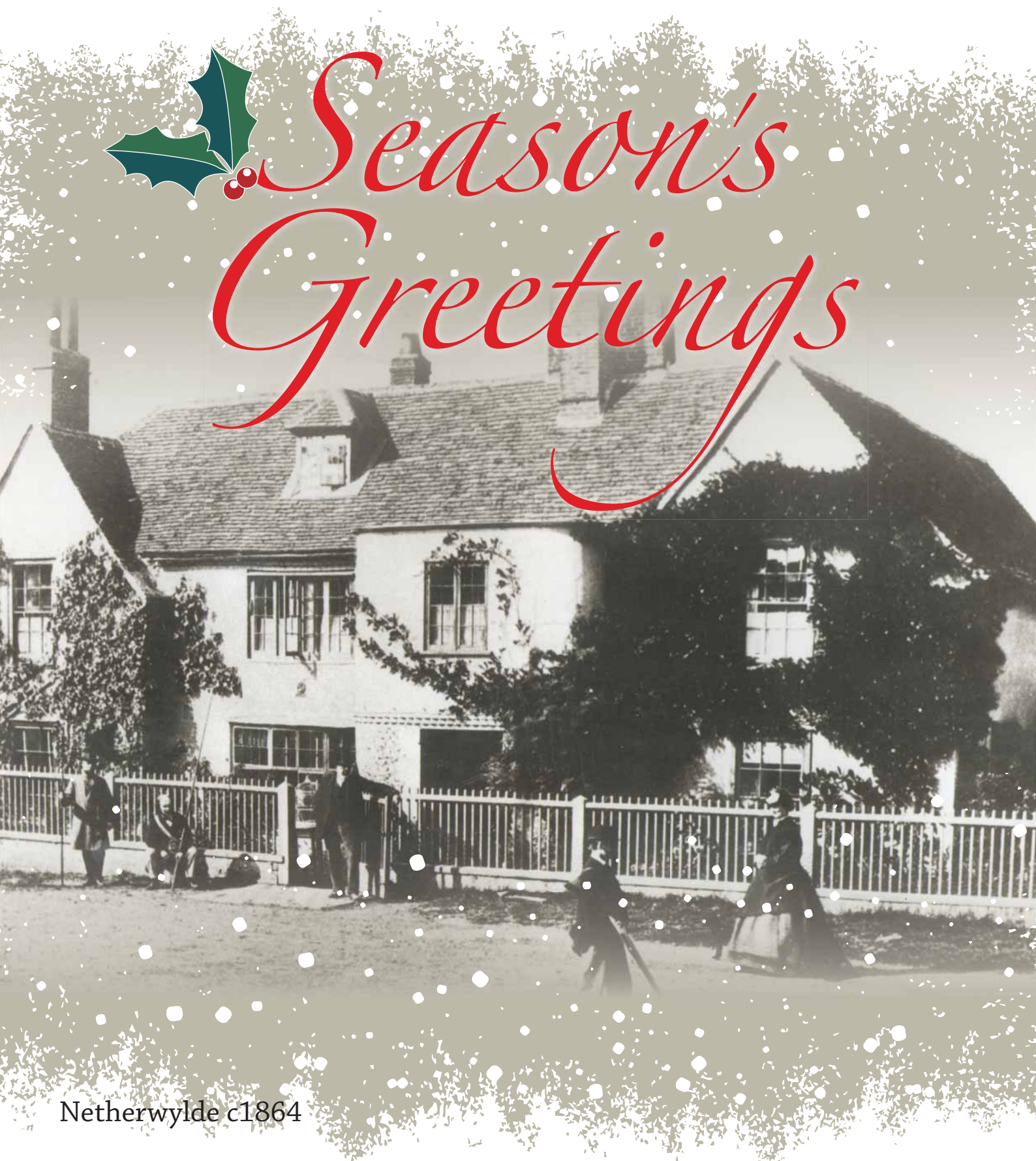
WINTER 2012

# 97

The Newsletter of Aldenham Parish Council [www.aldenham.gov.uk](http://www.aldenham.gov.uk)



## Season's Greetings



Netherwylde c1864



## Chairman's Message



Councillor Ron Worthy  
Photo: Ken Morris Photography

I have been reminded in the last few months of the lyrics of a song from the sixties by Noel Harrison and others. The title was 'The Windmills of your Mind'. It seems that everything we have been working towards for any length of time is caught in a circle and as the lyrics said "Round like a circle in a spiral, like a wheel within a wheel".

We all thought that the fate of the Railfreight Depot would have been decided by now but it is obvious that we have to raise funds again for another enquiry. The Secretary of State Mr Eric Pickles, seems to have been asked to make an impossible decision. He has therefore decided that a new enquiry to decide whether the depot should be at Colney Street or Colnbrook, Slough should be called. This will of course result in extra expense for St Albans City and District Council and other groups such as Strife. The Parish Council will continue to support these groups in their appeal process.

In a similar vein the fate of the old Fire Station has still not been decided. Hertsmere Borough Council Planning Committee refused the application by Beechwood Homes on the grounds that it failed to provide a significant area for Community use. Beechwood Homes have not been listening to what the people of Radlett have been saying and came up with spurious uses for this Community area. However, when the Parish Council put forward some ideas for its use, we were told that the rental expectations would be far in excess of what we can afford. Negotiations are continuing.

So here we go again locked into another spiral where we as a Parish Council are frustrated at every turn. As the song says 'Like a door that keeps revolving in a half forgotten dream'. Only it is not a dream, it is really happening and your Parish Council will continue to work towards a sensible result.

Councillor Ron Worthy  
Chairman  
Aldenham Parish Council



## Olympic Gold Medallist switches on the Christmas Lights

We are delighted to announce that the Super Heavy weight Champion and Winner of a gold medal in the 2012 London Olympic games Anthony Joshua, is turning on the Christmas lights this year as part of our Winter Fair celebrations on Sunday 2 December 2012.

Born in Watford, Joshua was a late starter into the sport. He only took up boxing in 2007, aged 18. His club, Finchley ABC in Barnet, North London is also home to professional heavyweight Derek Chisora.

In the 2011 World Amateur Boxing Championships in Baku, Azerbaijan, Joshua made his presence known when he beat Italian reigning World and Olympic champion Roberto Cammarelle, and went on to defeat Erik Pfeifer of Germany in the semi-finals, unfortunately losing by one point to local boxer, Magomedrasul Majidov.

Through this Joshua secured his place at the 2012 Olympic Games in the 91kg+ division as relatively newcomer to this level of sport.

In the London 2012 Olympic Games, Joshua battled his way through three tough rounds in his opening contest, winning 17:16. His next fight was won by 15:11 guaranteeing at least a bronze medal. Joshua met 6 feet 9 inches (2.06 m) Kazakhstan boxer, Ivan Dychko, for the semi-finals but regardless of his height disadvantage he won by 13:11. This gained him a place in the finals. Joshua's fight was against 32-year-old reigning Olympic Champion and former twice World Champion, Roberto Cammarelle of Italy. It was an amazing win for Team GB and was their 29th Gold medal.





# What's On Locally

Remember to check the Aldenham Parish Council website for all up to date events and meetings [www.aldenham.gov.uk](http://www.aldenham.gov.uk)

**Thursday 29 November 8pm**

The Pheonix Concert Band will play a seasonal medley of popular and seasonal music in Christ Church, Radlett. Tickets on the door (£6 adults, £4 concessions). Light refreshments will be on sale. Proceeds to the Peace Hospice.



**Saturday 8 December 2012 to Saturday 15 December 2012 inclusive**

To celebrate Chanukah, The United and the Reform Synagogues of Radlett will jointly erect a Menorah outside the Radlett Centre. Lighting and service times vary. Please see noticeboards at Synagogues and the Radlett Centre.

**Sunday 20 January 2013 10am-4pm**

Radlett Art Fair at the Radlett Centre. Admission £2.50, children under 12 free. Bringing together more than 20 Artists and Sculptors who will be exhibiting and selling their works including Originals, Signed Limited Editions and Collectables.

**Thursday 24 January 2013 8pm**

Radlett Art Society, at the Radlett Centre. Tickets £7, A slide lecture by Brian Cairns Dip FA (Oxon) FRSA.

**Tuesday 29 January 8pm**

Radlett Music Club presents Primavera Ensemble String Sextet at the Radlett Centre.

**Saturday 9 February 7.30pm**

Shades of Blue, Music for Lovers at St John The Baptist Church, Aldenham.

**Wednesday 20 February 8pm**

Radlett Music Club presents Judith Hall, Flute and Craig Ogden, Guitar at the Radlett Centre.

**Sunday 3 March 3pm**

The Annual Civic Service at the Radlett Centre. Everybody welcome.

**Monday 11 March 8pm**

The Annual Parish Meeting. Your opportunity to find out and raise questions about what your council does for you.



**Saturday 1 December 5pm**

Father Christmas, aka David Press, will be turning on his Christmas Lights at 33 Battlers Greens Drive. All proceeds go to the Leukaemia and Lymphoma Research Fund.



**Saturday 1 December 7.30pm**

The Elstree Singers - Madrigals, motets, mulled wine and mince pies. At St John the Baptist Church, Aldenham.



Anthony Joshua

**Sunday 2 December 12-5pm**

The Winter Fair and Christmas Lights Switch On. The festive fun will also include a kiddies funfair, childrens choir, craft and food stalls.



**Wednesday 12 December 2012 7.30pm**

Rotary Annual Carol Concert featuring Fair Field, Newberries and

Shenley schools. Conducted by Helen Street. Also featuring St. Albans' City Band, Nigel Rogers and Julia Beynon.

**Saturday 12 January 2013 at 7.30pm and Sunday 3 January 2013 at 3pm**

Amahl and the Night Visitors by Menotti (A short opera about the three kings and their search for the baby Jesus) at St. John the Baptist Church, Aldenham.

**Saturday 8 December from 7pm**

RADLETT CHORAL SOCIETY CONCERT, Christ Church. 7.45 pm performance begins, with mulled wine from 7pm. A programme of Christmas music. Conductor Roger Sayer.

## RADLETT LAWN TENNIS AND SQUASH CLUB

425 Watling Street, Radlett, Herts, WD7 7JG

**WELCOMES PLAYERS ALL AGES AND ABILITIES**

**Membership Enquiries**

admin@rltsc.co.uk  
01923 854523  
www.rltsc.com

**4 Glass Back Squash Courts  
11 Tennis Courts (6 Floodlit)**

Club, District and County Leagues  
Social Tennis & Squash  
Coaching for all Abilities

Friendly Bar  
Social Functions  
Club Tournaments

The Radlett Lawn Tennis and Squash Club, Registered Charity No. 1117605

## SERVICED OFFICES AVAILABLE IN RADLETT VILLAGE



**We provide:**

- **Fully serviced self contained office** suites both short and long term licences.
- **Consulting room** available half or full day basis.
- Onsite parking and visitor parking.
- Close to Radlett station.

**t: 0845 872 4949 e: info@thecornworks.co.uk**

Call in and see us at:

The Corn Works, Station Road,  
Radlett, Hertfordshire, WD7 8JY

[www.thecornworks.co.uk](http://www.thecornworks.co.uk)

## THIS IS YOUR LIFE ...

I can help you create a beautiful coffee table style book for that special occasion:

Weddings, retirements, landmark birthdays,  
Bar/Bat Mitzvahs ...

Or - there may be a family story  
you would like to share

For more information, to discuss your ideas or to see a sample of my previous work contact me by email [mirandaquinney@yahoo.co.uk](mailto:mirandaquinney@yahoo.co.uk), telephone 07729 064483

or look at the website [www.mymemo-riestoshare.co.uk](http://www.mymemo-riestoshare.co.uk)

*Your book will be a gift that will be treasured for ever.*



## the radlett centre

### DECEMBER

#### Art Exhibitions:

Ground Floor Gallery: Huw Hopkins

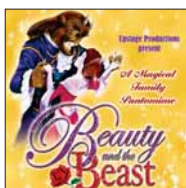
Apthorp Gallery: Giovanni Caputo

Sat 1 Magic 7.30pm

Sun 2 The All Jewish Christmas Variety Night 7.30pm

Sat 8 - 31 Mon - Beauty & The Beast

Wed 12 - Community Carol Concert 7.30pm



BOX OFFICE: 01923 859291

[www.radlettcentre.co.uk](http://www.radlettcentre.co.uk)

December 2012 - February 2013

### JANUARY

#### Art Exhibitions:

Ground Floor Gallery: Art Expo

Apthorp Gallery: Art Expo

Tue 8 Blood Clinic 2pm-8pm

Sat 13 The Big Band 7.30pm

Sat 19 The Brothers Gibb 7.30pm

Sun 20 Art Fair 10am-4pm

Thur 24 Art Society Lecture 8pm

Sat 26 The Elvis Years 7.30pm

Sun 27 Jewelsh 7.30pm



Jewelsh

### FEBRUARY

#### Art Exhibitions:

Ground Floor Gallery: Angela Conway

Apthorp Gallery: Winston Ingram

Fri 1 Think Floyd 8pm

Sat 2 How to Catch a Star 11.30am & 1.30pm

Sun 3 Cleo Laine & Friends 7.30pm

Thur 7 A Midsummer Night's Dream 7.30pm

Sat 9 ABBA Forever 7.30pm

Mon 18 Milkshake! 1.30pm & 4pm

Sat 23 Barry & Stuart: Show & Tell 7.30pm

Sun 24 Sounds of the Glenn Miller Era 7.30pm

Wed 27 Paul Jones & Digby Fairweather 8pm

Thur 28 Pam Ayres 8pm

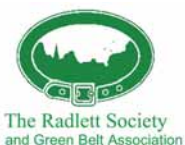


Pam Ayres

[www.radlettcentre.co.uk](http://www.radlettcentre.co.uk) [www.radlettcentre.co.uk](http://www.radlettcentre.co.uk) [www.radlettcentre.co.uk](http://www.radlettcentre.co.uk)



RADLETT AND ALDENHAM  
GOOD NEIGHBOURS



## Radlett & Elstree Neighbourhood Policing Team

Website Address: [www.herts.police.uk](http://www.herts.police.uk)

Pc Philip Tuck

PCSO Iain Boyd

PCSO Gavin Wright

PCSO Tim McGreevy

Phone: 01707 354192 (Neighbourhood Police Team)

101 (Non Urgent)

999 (Urgent)

Email:

[NPTBorehamwood@herts.pnn.police.uk](mailto:NPTBorehamwood@herts.pnn.police.uk)

Follow on: [twitter.com/RadlettPolice](https://twitter.com/RadlettPolice)

#### Community Safety Partnership (Radlett)

Valerie Kane

Hertsmere CSP

Civic Offices

Elstree Way

Boreham Wood

Hertfordshire

WD6 1WA

email:

[partnership.support@hertsmere.gov.uk](mailto:partnership.support@hertsmere.gov.uk)

[valerie.kane@hertsmere.gov.uk](mailto:valerie.kane@hertsmere.gov.uk)

Phone: 020 8207 7801

Fax: 020 8207 7478

#### Radlett Chairman

Councillor Dan Griffin

email: [cllr.dan.griffin@hertsmere.gov.uk](mailto:cllr.dan.griffin@hertsmere.gov.uk)

#### Radlett Neighbourhood Watch Co-Ordinator

Angela Thomson

email: [at@thomsons.co.uk](mailto:at@thomsons.co.uk)

*The illustrations throughout this edition are by local artist Paul Ellis*



#### DISCLAIMER

The words written in the articles contained in this edition are the authors own. No responsibility can be accepted for errors or omissions. All copy correct at the time of going to press. Edited and Produced by Aldenham Parish Council, The Radlett Centre, Aldenham Avenue, Radlett, WD7 8HL  
[www.aldenham.gov.uk](http://www.aldenham.gov.uk)



#### CITIZEN'S ADVICE BUREAU

Every Tuesday from 10am to 1pm. First Floor, The Radlett Centre. Sessions operate on a 'drop-in' basis. If required appointments can be made on 0844 826 9703



# Radlett Horticultural Society



## Allotments NGS Open Day Phillimore Recreation Ground

When Chairman Peter Hordern suggested that the Society, in conjunction with the National Gardens Scheme, should organise an open day at the allotments, he had little idea of what a success the event would be. On a glorious hot and sunny August afternoon there were 260 paying visitors - over 300 including allotment holders, helpers and children.

Many of the visitors showed a great interest in what the holders were growing and were impressed by the readiness of the allotment holders to explain the culture secrets for their flowers, vegetables and even honey.

There was particular interest in the Society's mini plot scheme which seemed a practical solution to those new to gardening or with limited time.

Both the plant and produce stall, which sold a wealth of fruit and vegetables contributed by the allotment holders, and the extremely popular home-made teas provided by local ladies were well patronised. A great day was had by all.



A lot of work was involved in organising and running the day with support from both the local council and the NGS and a big thank you must go to all who took part. With entrance fees, teas, plant and produce sales an outstanding total of £1274 was raised for the NGS charities. It is hoped to repeat the event in 2013.



## Autumn Show

Looking to recent events, the Autumn Flower Show on Saturday 1 September in the Vision Hall, Christ Church, is the Society's premier event, when all members get together and put all their horticultural abilities on show. Despite the battle with this summer's extraordinary weather, members came up trumps with 407 high quality exhibits. There may have been fewer apples and no pears but there were superb flowers, wonderful vegetables and the domestic exhibits and photographs were of a very high standard. A new class 'The Chairman's Pair' combining flowers and vegetables proved



Paul Balen: Royal Horticultural Society  
Banksian Medal

popular. The over 200 visitors who attended marvelled at the quality of the produce.

Mrs Hazel Aylett of Aylett Nurseries presented the cups and prizes. This included the two Roger Aylett Trophies awarded for exhibits grown

by children - our gardeners of the future. One of the major awards went to Paul Balen - the Royal Horticultural Society Banksian Medal.

## And What Next?

The Society continues to flourish. Our activities include talks, garden visits, holidays - as well as the opportunity to buy garden supplies at competitive prices from our Store in Scrubbits Park Road. Sundays 10 am - 12 noon reopening on 3 February 2013. The Society always welcomes new members and you need little or no knowledge about gardening to enjoy this sociable society, and learn more about the subject!!

Full details of the varied functions will appear in our invaluable Yearbook or on website <http://welcome.to/radlett.hort>



# Netherwylde Farm

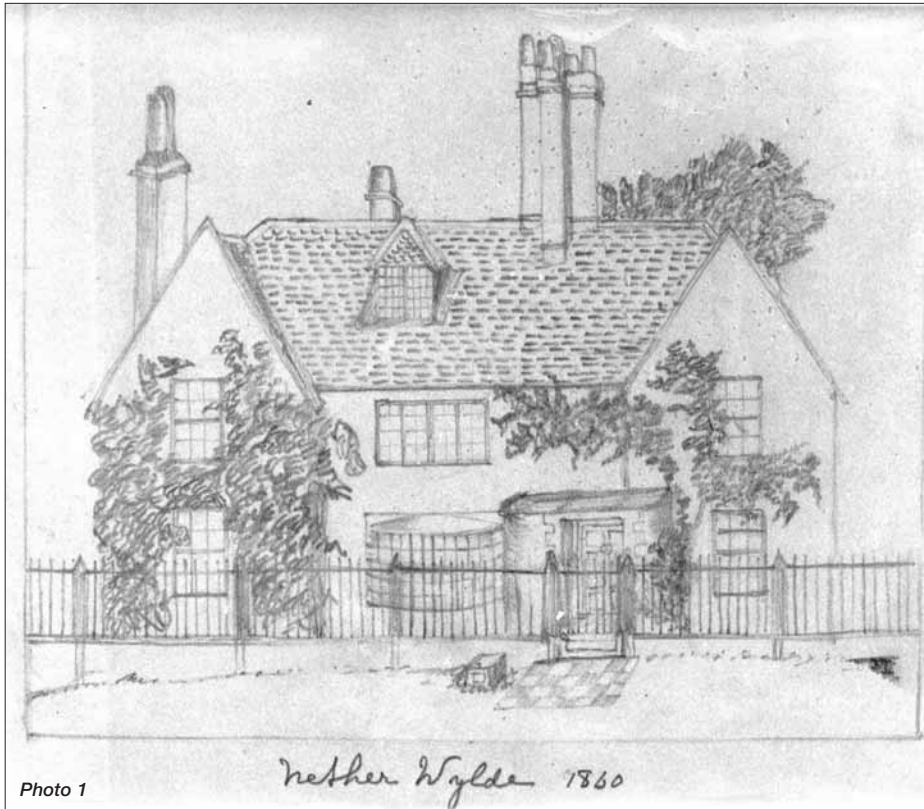


Photo 1

Netherwylde Farm sits at the northern end of the Parish of Aldenham. The first recorded land titles are dated 1331. In 1347, Richard Hendegome, the tenant, was granted a license to take fish from Mourbrugge (Moor Mill). By 1413 Netherwylde was owned by Henry Frowicke and rented to a man called Nutkyn. The Frowickes had made their fortune in the City between the 12th and 14th centuries as Mercers (textiles) and Goldsmiths.

The present house was built by Henry's grandson, also Henry, in 1517 and was completed around 1550, being a substantial rebuild of the earlier house.

When Henry died in 1527, the ownership of the house passed to his daughter Elizabeth who married John, son of Sir Humphrey Coningsby, a former Lord Chief Justice, their son Humphrey married the sole heir of Sir Richard Lee, uniting two fortunes.

Richard Lee had bought the rights to Saint Alban's Abbey, following the Dissolution of the Monasteries in 1539 and made use of stone from the Abbey in the foundations of the east wing and

possibly some of the timbers. The house was formed on typical Tudor lines with a jettied first floor and a large hall shared by owners and staff.

The tenant in 1523 was Edmund Nutkin and throughout the second half of the 16th century the tenants of the house prospered and many new buildings were erected – the cow byre dates from this period. In 1590 the house passed to Sir Ralph Coningsby, who was Sheriff of Hertfordshire in 1596 and 1614. The Coningsby's sold Netherwylde in 1627 to a property dealer from Barking for £1090.

In 1647, John Nicholl of Elstree, a prosperous landowning yeoman, bought it for £1610. He died in 1660 leaving the house to his son Nathaniel who opted to move in himself – the first time that the house would enjoy the attentions of an owner occupier. Benefitting from the rising price of corn the house was revamped, the old fashioned Tudor timber jetty removed, the front elevation faced in brick and more internal walls provided greater privacy. However there were still no corridors as each room led into the next.

This work coincided with the restoration of King Charles II, which Nathaniel celebrated by casting a new fireback for the new hall. In 1691 Nathaniel died and left Netherwylde to his son, John Nicoll who in turn left it to his son William in 1730.

William built a stable block for six ploughing horses and a very substantial granary, an indication of a prosperous farm; most granary's of that period were built entirely of wood and sat on saddle stones. William married Judith Tyler, of the Burston Tyler family in 1731, but did not include her initials on the granary he built that year. However, by 1734 her name appears on a plaque on the new stables. It is thought that Judith brought a substantial dowry to their marriage, as much building work took place during the early 1730's including a cellar and other extensions.

In 1757, Netherwylde passed to Sarah Coghill, who had married Robert Hucks Gibbs; the family was to become the Lords Aldenham 130 years later. Under her guidance Netherwylde became part of a large estate and remained in the Aldenham family until 1922, when its fortunes diminished and Netherwylde was sold to a tenant, John Hedges.

In the II World War years of 1939 to 1945, Netherwylde was used as a billet for RAF personnel deployed at the Handley Page Airfield in Park Street. By 1968 Netherwylde was empty and lay abandoned until 1980. The present family have lived there since 1984.

Netherwylde sits in 195 acres; 70 acres of which are arable, the family gardens amount to 4.5 acres, these are walled with the Rivers Colne and Ver running east to west, the rest of the land is used for grazing and woodland. Over the past 30 years, 50,000 trees and hedgerow have been planted of which, 1500 are walnut trees supplying a regular source of food for the local squirrels.

The Rivers Colne and Ver run to the front and the rear of the property. Netherwylde has been severely flooded during the last thirty years, not by the rivers but by water from the surrounding hillside. To alleviate the problem a



Photo 2

Deviation Order, subject to Planning Permission, was obtained, a new road was created, a footpath deviated and on the south side of the house a ditch was dug and now carries rain water around the house by east and west, as opposed to north and south.

Netherwylde Cottages at the entrance to Netherwylde Farm, were built for 'Hatters', with reeds supplied not only from the Rivers Colne and Ver but from other neighbouring rivers. Brazilian hats were made here by plaiting the reeds together to form thin strands and then sewn together to create these wonderful hats.

Photographs: The front cover of this edition shows Netherwylde in c1864. The centre of the photo shows newly built double storey front extension, which was the 'brain child' of the then present owner and was known as 'the other chamber', as it housed bathroom facilities and also a toilet with water supplied by a new water tower to the east wing. It stood for 50 years until Lady Yule, who lived at neighbouring Hill Farm bought the property in the 1920's, she described the extension as ugly and decrepit, and had it demolished.

Photo 1: Is a sketch of Netherwylde drawn in 1860 and possibly used in preparation for a front extension.

Photo 3



Photo 2: Shows an inglenook fireplace situated in the drawing room with a cast iron fire back which bears the Coat of Arms of Charles II and the date 1662.

Photo 3: The same date also appears on the Nicholl family inscription painted on the ceiling of an upstairs bedroom which was restored in 1847 by Ralph Smith. It is thought that Ralph is the gentleman pictured centre on the front cover photograph wearing a top hat.

Howard Guard  
DL

*We would like to thank Howard for giving us his time and for writing this article.*



The Communications Committee responsible for compiling Around Radlett is always pleased to receive paintings, photographs and articles on local events.

Please send them to  
[apccomms@aldenham.gov.uk](mailto:apccomms@aldenham.gov.uk)

## ALEXANDER TECHNIQUE

LESSONS FROM A  
S.T.A.T. REGISTERED  
MEDICALLY QUALIFIED  
TEACHER

The technique is of particular benefit to persons suffering from chronic backache, stiff neck and a host of muscular-skeletal problems, but can also benefit more obscure symptoms such as headache, tiredness, tension and fatigue

For further information contact:

Milton Simanowitz  
7 The Avenue, Radlett  
Telephone and Fax  
01923 855007





# ALDENHAM PARISH COUNCIL

[www.aldenham.gov.uk](http://www.aldenham.gov.uk)

To contact a Parish Councillor go to [councillor@aldenham.gov.uk](mailto:councillor@aldenham.gov.uk)

## ALDENHAM EAST



**Councillor Gill Balen**  
Chairman of the Communications Committee  
Member of the Planning Committee  
Member of the Parks and Open Spaces Committee  
Member of the Finance and General Purposes Committee  
Member of the Gravel Allotments Trust  
\*Representative of the Platt Subsidiary Foundation  
\*Member of the All Faiths Group



**Councillor Viv Charrett**  
Chairman of the Planning Committee  
Member of the Communications Committee  
Member of the Community Development Committee  
Representative of the Street Scene Forum  
Representative on the Aldenham Alms Houses



**Councillor Caroline Clapper**  
Member of the Community Development Committee



**Councillor Saleem Khawaja**  
Member of the Planning Committee



**Councillor Neil Payne**  
Chairman of the Strategic Planning Committee  
Member of the Planning Committee  
Member of the Finance and General Purposes Committee  
Member of the Communications Committee



**Councillor Ron Worthy**  
Chairman of the Parish Council  
Member of the Finance and General Purposes Committee  
\*Representative on Platt Subsidiary Foundation  
\*Representative on the Radlett Centre Trust  
\*Member of the All Faiths Group



**Councillor Tony Butwick**  
Member of the Community Development Committee  
Member of the Parks & Open Spaces Committee  
Member of the Communications Committee  
\*Representative on Aldenham Country Park Advisory Board  
\*Representative on the Radlett Village Institute Management Committee



**Councillor John Howley**  
Chairman of the Finance and General Purposes Committee  
Member of the Strategic Planning Committee  
Member of the Parks & Open Spaces Committee  
\*Representative on Herts Association Parish & Town Councils Executive Committee  
\*Representative on Radlett Village Institute Management Committee  
\*Representative on the Radlett Centre Trust



**Councillor David Lambert**  
Chairman of the Gravel Allotments Trust  
Member of the Parks & Open Spaces Committee  
Member of the Planning Committee  
Member of the Strategic Planning Committee  
\*Representative on Association to contain Elstree Aerodrome  
\*Representative on Aldenham War Memorial Hall Trust



**Councillor Estelle Samuelson**  
Chairman of the Community Development Committee  
Member of the Planning Committee  
Member of the Finance and General Purposes Committee  
Member of the Communications Committee  
\*Vice-Chair of the Radlett and Shenley Community Safety Partnership



**Councillor Garry Walton**  
Member of the Parks & Open Spaces Committee  
Member of the Community Development Committee



**Councillor Chris Wilkins**  
Deputy Chairman of the Parish Council  
Chairman of the Parks Open Spaces Committee  
Member of the Finance and General Purposes Committee  
Member of the Community Development Committee  
Member of the Strategic Planning Committee  
Member of the Communications Committee  
\*Representative on RAIFA ( Radlett and Aldenham International Friendship Association)

## Hertsmere Borough Council

**Aldenham East**  
Councillor John Graham  
[jgraham@britishlegion.org.uk](mailto:jgraham@britishlegion.org.uk)

**Councillor Charles Goldstein**  
[cllr.goldstein@hertsmere.gov.uk](mailto:cllr.goldstein@hertsmere.gov.uk)

**Aldenham West**  
Councillor Danny Griffin  
[dangriffin@thehirealliance.co.uk](mailto:dangriffin@thehirealliance.co.uk)

**Councillor Caroline Clapper**  
[carolineclapper@hertsc.gov.uk](mailto:carolineclapper@hertsc.gov.uk)

## Parish Council Offices:

Aldenham Parish Council, 1st Floor,  
The Radlett Centre Tel: 856433/858399, Fax: 852214  
Email: [clerk@aldenham.gov.uk](mailto:clerk@aldenham.gov.uk)

Office Opening Hours: 10am - 4pm Mon to Fri,  
Parish Manager: Peter Evans  
Email: [Peter.evans@aldenham.gov.uk](mailto:Peter.evans@aldenham.gov.uk)

## Forthcoming Committee Meetings From December 2012 – March 2013

### December

Monday 3	Planning
Thursday 6	Community Development
Monday 17	Planning
Tuesday 18	Full Council

### January

Tuesday 8	Communications,
Wednesday 9	Parks and Open Spaces,
Monday 14	Planning
Wednesday 16	Precept
Monday 28	Planning
Tuesday 29	Full Council

### February

Monday 4	Planning
Thursday 7	Community Development
Monday 18	Planning,
Tuesday 26	Full Council

Minutes from the Committee meetings are uploaded to the website once they have been approved and signed by the Chairman at the following committee.





# ALDENHAM PARISH COUNCIL

[www.aldenham.gov.uk](http://www.aldenham.gov.uk)

## Update from the Parks and Open Spaces Committee

This report, written halfway through the “council year”, features much that is good and a little that is bad and ugly!

Starting with the good, we are progressing towards seeking planning permission from the relevant authorities to reclaim the land forming Wellhouse Dell and to extend the car park and to construct a new access road at King George V playing fields. Planning permission and securing funding are critical to this project. If funds permit, we also hope to construct additional pitches on Salter’s Field. If we are successful, the project should bring considerable recreational benefits to the Parish.

We have identified a need to replace many of the damaged and obsolete Christmas lights in the centre of the village. Residents will notice some changes this year, after the “switch-

on” at the Winter Fair on Sunday 2 December.

Visitors to the Children’s Play area at Phillimore Recreation (the Rec) ground will have noticed some new play equipment. A new one-seat “tractor” springer and a new two-seat “spring” rocker have replaced the old “dog” springer and the two-seat little see-saw, and a 20 metre aerial runway (zip wire) has been added.

We continue to make good progress with our five year plan to survey and fell diseased, and unsafe trees and carry out maintenance work on others. We will shortly be considering tree replanting options for the Rec.

Unfortunately, the bad and the ugly have appeared in the form of deliberate damage to some of the play equipment. Such damage includes removal of

a metal panel from the very young children’s multi-play unit, removal of wooden roof slats from the older children’s multi-play unit, graffiti on the wooden frame of the brand new aerial runway and constant wrapping of the chains of the swings around the top bar of their frames. Such damage often takes the equipment out of service until repairs can be done and usually costs money to fix. To those doing the damage I would ask “why?” You are spoiling things for younger children, which you must have been not so long ago! To the Council Tax payers I would remind you that it is your money that is being wasted so would ask you to be vigilant. The Parish Council reports these matters to the Police and has asked them to increase their surveillance.

Finally, with the recent successes of Andy Murray, Heather Watson and Laura Robson, it is a good time to remind everyone that there is a hard tennis court available for public use at the Rec. Just turn up and play!

*Councillor Chris Wilkins, Chairman of Parks and Open Spaces Committee*



The Youth Council has swollen in size dramatically since its outset, though we would still

very much welcome any new members particularly as the oldest among us move off to University. We need more members not only so that we can claim to represent a larger demographic among Radlett’s youth but also so that we can pass on the leadership of the Council.

We are currently working on a number of larger projects that we hope will make significant improvements in the lives of the teenagers of Radlett. We welcome any suggestions with regards to these projects as well as any other suggestions, however trivial, so that we may serve our purpose of actually representing and helping the youth of Radlett.

The first of these projects is the raising of a Youth building in Radlett. The successful event at the Phillimore

Recreation Ground on the 21st April gave us much needed direction for what we should have in the building. The Radlett Youth Council hopes to construct a space for the youth of Radlett, something that we feel has been lacking in an otherwise thriving community. Whilst plans are definitely being set in motion, nothing has been finalised at this stage, however, talks are in progress with architects, regarding the possibility of a soundproof room, kitchenette and a projector screen – this certainly gives us all something to look forward to. We will keep you updated on the progress of this exciting project.

We have also begun talks about the possibility of building a skate park in Radlett. This has come about after numerous requests were made for such a feature. Much research needs to be done by Aldenhams Parish Council first and certainly before any funding for such an expensive project can be sort. However, the Youth Council lacks expertise in this area and would

therefore appreciate hearing from anyone who would like to get involved with this project. Should it eventually get the go ahead, help with the type and design would be needed too. We hope this can be part of Radlett’s Olympic legacy.

The Youth Council is also hoping to host an event paralleled to the Radlett Festival only for the youth of Radlett. The main ideas are for a Battle of the Bands or a Talent Show. Whichever option we go with hopefully it will be an entertaining evening.

Please like the “Radlett Youth News” Facebook page for updates and other relevant information, we promise not to clog up your feeds. Should you have any thoughts, ideas or questions please send them to [APCComms@aldenham.org.uk](mailto:APCComms@aldenham.org.uk)

Thanks from all at the Youth Council, and our new Chairman Griffin Schlaikjer

*Tom Baines & Ellie Freedman*



# ALDENHAM PARISH COUNCIL

[www.aldenham.gov.uk](http://www.aldenham.gov.uk)

## THE TAXI VOUCHER SCHEME

### A brief history

The Taxi Voucher Scheme was originally set up more than ten years ago when an article in a Hertfordshire magazine offered Parish and Town Councils funding of £2000 to facilitate a taxi voucher scheme for the benefit of elderly and disabled residents. Aldenhams Parish Council applied and were successful in receiving the grant which continued, subject to an annual application, for approximately four years. To apply for the taxi vouchers an applicant had to be over 75 years of age.

When the original funding ran out, there was a gap of about four years, before The Radlett Old People's Welfare Committee generously donated £10,000 to get the scheme up and running again. Over the years other local charitable organisations have also kindly given donations. As the demand for the vouchers increased it was also decided to change the eligible age to over 80 and stipulate that the applicant must have no other form of transport.

In recent years it has been more and more difficult to obtain funding to continue the taxi voucher scheme. Coupled with this, paper vouchers were replaced with a coin system which was confusing for some elderly residents. It also came to light that some of the applicants who were successful in receiving vouchers were using them for purposes other than those intended under the scheme or not actually using them at all.

The Community Development Committee are looking to hold a 'Consultation Event' for the older generation who live in the Parish sometime next year. At the event, residents will be asked about any transportation issues they might have. Hertsmer Community Transport will be invited to attend the event and give out information regarding the schemes they run in the area.

Aldenhams Parish Council's office have been happy and willing to administer the taxi voucher scheme for all these

years. However, we are now looking to the future and hope in time there will be other, better alternative ways of helping our elderly and disabled residents with their transport needs.

*Councillor Estelle Samuelson  
Chairman Community Development  
Committee*

## THE FUTURE OF THE FORMER RADLETT YOUTH AND COMMUNITY CENTRE at 2 LOOM LANE



The property at 2 Loom Lane has been the subject of some speculation recently, ever since the Radlett Youth and Community Centre premises were closed. The situation has been resolved in the past few months.

In 1877, the site was originally gifted by Captain William Brough Phillimore under the School Sites Act 1841 to the Vicar of Radlett, the Vicar of Aldenhams and the Headmaster of Aldenhams School, as Trustees of the Platt Foundation. The scheme was established on 13 May 1875, with the requirement that the site be used for a school for poor people in the Parish of Aldenhams. The adjoining residential house was used for the schoolmistress.

A school operated on the site until 1967, when the then Radlett Junior Primary School was closed, being merged with the school at Cobden Hill (itself subsequently closed many years later).

The responsibility for the site was subsequently confirmed, under a new Scheme dated 2 November 1951, as being with the Trustees of The Platt

Subsidiary Foundation (which had been formed out of the original Platt

Foundation as part of the 1951 Scheme).

In October 1968, a 21 year lease of the property was granted to Hertfordshire County Council (HCC). This lease was then renewed in 1989 for a further 21 years expiring in September 2010. During this period, HCC underlet the whole of the property to Aldenhams Parish Council. The residential house was let back to HCC for accommodation for a schoolteacher. The property has been used as a Youth Club two evenings a week, a centre for teenagers who have been excluded from schools, a commercial nursery school, Monkey Music, After School Club and a variety of private functions. The house continued to be occupied by a schoolteacher until early 2011.

HCC indicated that it did not wish to renew the lease when it expired in 2010, whilst the Trustees of The Platt Subsidiary Foundation were deciding what to do with the property. Not only was the Foundation unable to afford to maintain the property, but there were also questions as to title to the property. In fact, in May 2010, the Diocese of St Albans claimed an entitlement to the property, under the terms of the Education Act 1996, as the site had been a former Church School.

In early September 2012, the Department of Education issued an Order appointing the St Albans Diocesan Board of Finance as trustee of the property, and authorising its sale. Under the Order, part of the net proceeds of sale will go to a separate fund, administered by the Vicar and churchwardens of the Ecumenical Parish of Radlett, for educational purposes in the Parishes of Radlett, Aldenhams and Shenley in connection with the provision of religious education by means of a Sunday school or otherwise.

*Neil Payne  
Chairman  
Platt Subsidiary Foundation*



# Around Radlett News



Roberta Floate

## ROBERTA FLOATE

It is with great sadness that we report the passing of our dear colleague Roberta Floate. Roberta died on 29th August 2012 after a long and very brave battle with cancer.

Roberta started working for the Parish Council in 1990 as our planning and administrative officer. Her role brought her into contact with many of our local residents both in person and on the telephone. She will particularly be remembered for her cheerful, outgoing personality and helpful attitude to all.

Roberta came to London from her native Glasgow when she was very young and pursued her career there for several years before eventually settling in Radlett after her marriage. When her young daughter started at Newberries School she began work for the Parish Council in the original old house in Aldenham Avenue and later moved to the new centre when it was built in 1996.

Roberta was very involved in the early days of the Radlett Centre and for several years was a part time member of the box office team and would also duty manage some of the early shows. This she did for several years, until a separate staff structure was put into place.

Roberta was also involved with Christ Church and early on for some years enjoyed her duties as a Sunday School teacher there. She was also a very proud mother and grandmother to her daughter and two granddaughters.

She is greatly missed and her enthusiasm for helping the parishioners of Aldenham will continue to inspire us all here at the Parish Council.

## VISIT OF RAIFA MEMBERS TO LAUTERTAL TO CELEBRATE THE 1,000TH ANNIVERSARY OF THE FOUNDING OF REICHENBACH

Aldenham Parish is linked with Lautertal in Germany and the French town of Louveciennes not far from Paris.



RAIFA members taking part in the Parade

Lautertal is situated near Frankfurt and consists of several villages and a small town, Reichenbach. The area is known for fine local wines and the Felsenmeer - a hillside with huge rounded blocks of granite easily climbed even by children. It is now part of a UNESCO Geopark and was used by the Romans as a source of building material.

In June this year, a group of six members of RAIFA from Radlett travelled at their own expense to Lautertal to join in the celebrations of the 1,000th anniversary of the founding of Reichenbach. This coincided with the 30th Anniversary of Lautertal's other twinning with Jarnac - in the brandy producing region of France. As is usual the visitors from Radlett stayed in the homes of local residents and enjoyed a trip to the artists' quarter of Darmstadt, dinner with wine tasting, a rock concert, a visit to a local brewery, and a huge parade of floats to celebrate the anniversary which involved every organisation and most of the people of Reichenbach.

A painting donated by an amateur Radlett artist, Valerie Macdonald, depicting Lautertal Green was given by RAIFA and Aldenham Parish Council (APC) gave a copy of an ancient document showing that Aldenham existed in the time of King Offa. In return APC received a framed copy of the document showing that Reichenbach existed in 1012AD.

Town twinning is a concept whereby towns or cities in geographically and politically distinct areas are paired, with the goal of fostering human contact and cultural links. The idea is for both sides to learn from each other culturally and in other ways. In addition, many individual friendships are made between the people of the communities.

For more information on RAIFA (Radlett and Aldenham International Friendship Association) visit <http://www.raifa.org.uk/>

## FACILITIES OFFERED BY HERTFORDSHIRE LIBRARY SERVICE

**Home Library Service**, is bringing the service to you at home. If you are unable to reach your local library because you are housebound, have a disability or care for someone at home, the Home Library Service will deliver books and recordings to your home free of charge, and put you in touch with the range of services your local library offers. Enquiries to 01438 737333 or 01923 471333 or ask someone to pick up a reply leaflet coupon from Radlett library.

### Support for Reading Groups

Hertfordshire Library Service supports reading groups by providing books in various formats for you to discuss. There is a collection of books in multiple copies for reading groups to use. At least 12 copies of each title are available for loan. The group can borrow their selected book for 6 weeks, after that it can be renewed for a further 3 weeks. You can plan your reading up to six months ahead. Contact <http://libraries.hertscc.gov.uk/> or telephone 0300 1234 049.

**The Toy Library** allows parents/carers and children to access a variety of different toys and books at a low cost for up to two weeks. Maybe of interest to grandparents with grand children coming to stay. The annual membership is £6 per annum. The catalogue can be viewed on their website at [www.hertsmere-children.co.uk](http://www.hertsmere-children.co.uk) or telephone 020 8386 4038.

# Around Radlett News



## REGULAR WALKS

The monthly Sunday afternoon walks organised and led by David Bagon have now finished. David has led these monthly walks for a number of years and we are sure everyone that has been involved will want to offer their thanks to him for organising and leading these walks.

## RENDEZVOUS LUNCH CLUB

In 1982 Radlett United Free Church was without a Minister and it was suggested by the Interim Moderator that the members look for an area of need.

Sally Hockaday, Margaret Hollis and Julie Sutherland felt that the need was for elderly people who might be lonely at home. They could meet together once a week over lunch.



*The photograph shows Sally and Julie still working for the elderly of Radlett after 30 years.*

With the help of Social Services, equipment was purchased and a list of those who would benefit was drawn up. An appeal for cooks from the community was made and sufficient ladies who could cook were found. Then came the problem of getting the housebound to the Church Hall every week. A similar appeal achieved a list of people willing to use their cars on a rota basis to transport the members.

On 6th September 2012 the Rendezvous Lunch Club celebrated its 30th Birthday with a special lunch for all the cooks and members. Sally Hockaday and Julie Sutherland were each presented with gift vouchers in grateful thanks for their services over 30 years. The members also produced a special pen celebrating the event which was presented to all those who are involved in the Club.

*Valerie Worthy*

## HARPERBURY FREE SCHOOL – A NEW SECONDARY SCHOOL FOR THE LOCAL COMMUNITY

We had a great response from our open evening at The Chapel in Shenley at the end of September, with over 120 people turning up to find out more about our proposal for Harperbury Free School. The meeting was to update people on our proposal and provide information on things like our preferred location for the school. We are hoping to be able to build the school at the Harperbury site, but cannot guarantee this at this stage.

We also gave more information on our vision for Harperbury where we want to combine traditional values, high standards and advanced teaching methods with an innovative curriculum. Harperbury will meet the demands of the ever-changing 21st century, drawing on the best proven education models from around the world to ensure that every child meets their full potential in life.

We also explained, how, if we get approval, Harperbury Free School would open its doors in September 2014, which means being ready for the first applications to be received in October 2013. The first year would have 100 students and when they move up in the following year, there would be 100 more students. It will therefore take six years to have a full school with over 700 students!

People were informed that, as part of the application, the Department of Education requires us to prove there is a real demand for another secondary school and we encouraged visitors to complete application forms which would help us prove that, in principle, they would choose Harperbury Free School as their first choice of secondary school. Obviously, this will not affect any future application anyone makes, as our application has not yet been approved. We still need more families/parents to register their interest in Harperbury Free School, which can be done by visiting our website at [www.harperburyfreeschool.org.uk](http://www.harperburyfreeschool.org.uk) or emailing us at [harperburyfs@gmail.com](mailto:harperburyfs@gmail.com)

We hope to plan more meetings in the not too distant future, and would ask anyone who is interested to contact us via the website (address above) which is the best place to find out up to date information and you can also register to receive our monthly newsletters.

*Caroline Ornstein*



## RADLETT AND DISTRICT U3A

In June 2012, ten local residents put their 'toes in the water' and held an inaugural meeting at The Vision Hall, Christ Church to find out if there was a need for Radlett and District to have its own branch of the U3A. The large turnout of people was totally unexpected and the vote to go ahead with a local branch was unanimous.

U3A stands for the University of the Third Age and is open to people who are either retired or semi-retired. U3A's are self-help, lifelong learning groups for older people no longer in full time work. U3A provides opportunities for members to share learning experiences in a wide range of interest groups and to learn, not for qualifications but for fun.

The idea of starting a U3A branch in Radlett came from local residents Gerald and Barbara Bernard, who were founder members of the Bushey U3A. They became aware of a need for a local branch when Bushey closed their doors to new members having reached a total of 600. After four months of operation, the R&D membership reached 400 and the problem the Committee found themselves faced with was finding a venue in Radlett large enough to accommodate everyone.

In October, a decision was made to move to the Metropolitan Police Sports Club, Aldenham Road, Bushey WD23 2TR beginning Tuesday 13 November 2012. All future meetings will be held there on the second Tuesday of each month at 9.45 am for a 10 am start. This new venue is large enough to accommodate all members with ample car parking facilities. Letters/emails have been sent out to members. For further information contact: [sandra.taylor123@o2.co.uk](mailto:sandra.taylor123@o2.co.uk).





### CONGRATULATIONS TO FAIR FIELD SCHOOL AWARDED 'OUTSTANDING' OFSTED RATING.

Fair Field have been rated 'outstanding' by inspectors from Ofsted after their visit in October. This is the highest rating Ofsted can give and was awarded in all categories. Matt Johnson, headteacher, said "We're thrilled with this result – it's a tribute to the wonderful learning that goes on at Fair Field. It's a credit to our talented team and to the hard work of the pupils" In the latest report, inspectors have strong praise for every area of the school and label much of what they saw in their visit as 'exemplary'.

### A NEW NHS CONTACT NUMBER

Call NHS 111 when it's less urgent than 999

Anyone who lives in, or is visiting, Hertfordshire, can now call 111 when they need medical help fast, but it's not a 999 emergency, life-threatening situation.

The new 111 service is being introduced as part of the wider revisions to the urgent care service to make it easier for the public to access the right services.

111 ensures a new way to help people receive the right care, from the right person, in the right place, at the right time. They will be assessed, given advice and directed straight away to the local service that can help them best. That could be A&E, an urgent care centre, an out of hours GP, a minor injuries unit, community nurse or late opening pharmacist.

The 111 number is available 24 hours a day, 7 days a week, 365 days a year. Calls from landlines and mobile phones are free. For less urgent health needs, patients should still contact their GP or local pharmacist in the usual way.

111 can help to take the pressure off the 999 emergency service and local A&E departments, which many people turn to if they don't know where else to go for the urgent help they need.

### RADLETT SAYS FAREWELL TO HUSBAND AND WIFE TEAM REVDS WILLIAM AND ANNIE HOGG



William and Annie Hogg © Watford Observer

Since moving to Radlett eight years ago from Liverpool William and Annie have become popular figures in the community. They served the parishes of Aldenham, Radlett and Shenley as vicar and assistant curate.

They have now moved to Perthshire in Scotland, where Annie is originally from.

Annie said they were both very sad to be leaving Radlett. She added " We have made some great friends here, Radlett is a very community-minded place and we will be sorry to go"

Their departure was marked with a church service on 30 September which coincided with the Harvest Festival.

They intend to spend time travelling between Italy and Sweden to visit family.

We would like to wish them every success in the future.



### SEARCHING FOR YOUR ANCESTORS?

The Parish Council, and local churches and synagogues, often receive inquiries from people around the country and sometimes from abroad who want to make find out about a relative or friend who was perhaps born locally or lived in the area for part of their lives. Some of these inquiries are relatively easy to respond to, others are more difficult.

Recently, the Parish Council received an inquiry from a lady who lives in Lancashire and was trying to track down her 'rather elusive grandfather'. She sent a photograph of her grandfather, Robert Albert Frost, pictured below. She thought that the photo may have been taken at a Jubilee celebration held in Aldenham in 1935 but wanted confirmation that he actually did live in the village.

Local resident, Brian Hyde, who was born in the late 1920's in Patchetts Green was shown the photo. He did not know Robert Frost personally, but remembers seeing a group photo taken at a fair held in Aldenham in 1935 that shows the same gentleman wearing the same costume. He thought that Robert Frost could have been employed by John Pierpont Morgan, of the banking family, who at the time owned the Wall Hall Estate and much of the land in and around Aldenham.



Robert Albert Frost c1935

John Pierpont Morgan employed most of the villagers on his estate, he took a benevolent interest in village life and probably the local village fairs encouraging the villagers

and his staff to get involved.

If any resident can add more to this story, please contact Jan Adams at [jan.walk@talktalk.net](mailto:jan.walk@talktalk.net)

# Bringing the news to those who cannot see it

Only occasionally will an event in Radlett or Shenley be of sufficient importance to be reported by the BBC. Thankfully we still have local newspapers but not everyone's eyes allow them to read newspapers or magazines; yet, local people with vision problems are able to hear local news courtesy of a weekly recording produced by the Radlett, Elstree, Borehamwood and Shenley Talking Newspaper.

Each week's recording has 30 minutes of local news taken from the Borehamwood Times and the Watford Observer and 30 minutes of magazine items. People who know about the Talking Newspaper's weekly recording enjoy receiving their copy, usually on Saturday mornings, but there are probably many others in our community who do not know about the

availability because maybe no one has brought it to their attention. Perhaps you know someone with vision problems but have you told them about the local Talking Newspaper? If not, why not act today? Check if the person would like to be a recipient of the weekly recording and, if so, please contact either David Clout on 01923 854403 or Don Scott on 01923 856935.

Bringing their local talking newspaper to the attention of a visually impaired person may not be the end of your contribution to enriching their quality of life. Perhaps you could read on an evening or select local news items or topical magazine style articles or, if you feel technically minded, you might like to control the recording. The weekly recordings are produced by volunteers

who go along to the Talking Newspaper's studio housed in the Village Institute in Radlett.

Anyone interested in learning more about being involved in the production of the weekly recordings should contact David or Don as above for an invite to go along one Thursday evening.

We hope that you will take notice of this article and increase the numbers who receive the recordings or volunteer to ensure recordings continue to reach the visually impaired in this area. Please don't leave them with news blackout.

*David Clout*



## AGM of the Red House Patients Group

The AGM of the Red House Patients Group will take place on Wednesday, December 5th at the Vision Hall, Christ Church, Watling St. Coffee at 7.30pm for a start at 7.45pm. Ken Spooner, Practice Manager, will speak. The Red House Patients Group was formed in 2003 by Rob Reith after a request from the Practice. Rob chaired the committee consisting of 12 members for the first 3 years.

For 6 years subsequently, the chairman has been Gill Balen helped by a loyal committee. The Group was formed to liaise between patients and doctors; to provide information about health issues, both local and national, and to help decide upon services to be commissioned.

Over the past 6 years there have been 30 open meetings when consultants, administrators and others have given talks to members.

The committee has also held small group meetings for diabetic, cardiac

and arthritic patients. Those with an interest in breast cancer have attended drop-in tea parties from time to time.

When the Practice was given Pathfinder Status to become a Clinical Commissioning Group on its own, a Board was set up including 2 members of the RHPG Committee.

Unfortunately, the Government changed the parameters, and it seems as if the Red House will be forced into joining a huge consortium consisting of 70 practices in W. Herts. It remains to be seen how this will affect services in the future.

This Committee will not be continuing after December's meeting. It feels that it is time for others to come and take things forward. If no-one is prepared to do that, then a motion will be presented to the AGM to wind up the Group.

Red House Patients' Group is a Registered Charity No: 1109702

*Gill Balen, Chairman*





### Gem'll fix it

Just phone Gem on  
01727 872136  
Mobile: 07877 926130

Carpentry a speciality  
Electrics • Decorating • Plumbing  
Flat Packs • Plastering • Tiling  
Replacement Windows & Doors  
Bathrooms & Kitchens • Flooring  
- and outside work

Full Home Maintenance  
Park Street based  
Free estimates given  
References available





# Malt Lane



One of the least known and least used roads in Radlett is also one of its oldest. Originally a carters route, it was a short-cut for farmers (and travellers) travelling from the farms north of Radlett to Aldenham and beyond.

The Watling Street end starts from beside the former Radlett Hall, now the United Synagogue, and leads up to Newlands Avenue. Before Park Road and Station Road were laid out (sometime around 1895) it was one of only three routes westward off Watling Street. The other two were Aldenham Road, in the 19th century known as Watford Road (and locally then and now as Primrose Hill), the principal route for traffic and Loom Lane, also a carters or farmers route.

The bottom (Watling Street) end is still used by residents of Park Road who have garages at the ends of their gardens. Unfortunately for them the builders of their houses at the turn of the century had no idea how the motor car would take over our lives and, like so many of our roads, no provision was made for them – no garage and certainly no-where to park.

The road is still negotiable although motorists would do well to heed the warning signs at each end advising that it is not suitable for motor vehicles.

The road is unique in many ways for although it has a name, it has never had any houses in it, although in 1923 a Mr Henry James had a house built which he recorded in Kellys Street Directory as being located in Malt Lane. This puzzled me for many years. Where could it have been? No maps have ever indicated a house being built there. The mystery was resolved when I was looking at



some deeds relating to Newlands, the 18th century house off Newlands Avenue. As was the way in those days (1923) the legal beagles provided a little map showing the location of Newlands together with the surrounding properties and there, on the corner of Newlands Avenue and Malt Lane, was a property marked as being owned by Mr H James.

His reason for giving Malt Lane as his address was because in 1923 the name Newlands Avenue had not been invented. The track up to the junction with Malt Lane was a cart-track leading from Hill Farm to Watford Road. Mystery solved.

Why is it called Malt Lane? No definitive answer has ever been found. Harold Knee in one of his articles referred to a farm that, perhaps as early as the 15th century, used to be on the site of the Darnhills flats. In the article he said it was believed that the farm buildings complex included a small malt house (for brewing beer), hence the name. I have not seen this reference in any other document but the tale is given credence by the name of a nearby road – Gills Hill Lane. In the olden days (ou sont les neiges d'antan!) it was common to impregnate beer with a herb ground from ivy, or to give it its old fashioned name, Gill.

Furthermore, there were once a considerable number of families connected with the brewing industry living in and around Aldenham.

The most noteworthy was Richard Platt, founder of Aldenham School and Whitbread; that brewery still contributes to a local charity known as The Platt Foundation. Other brewing names that might be recognisable are

John Charrington, son of the Vicar of Aldenham and farmer in Kemp Row, and Michael Bass, owner of Newberries Mansion in the 1850s. Less obvious brewers were Robert Hucks, one time owner of Aldenham House, and John Mason, owner of Porters in the 1750s.

Another interesting point about Malt Lane is the little white pillar that sits at the Watling Street end, on the left-hand side, and the side it sits is important to its original function. This little object is a Grade II Listed Building and it has been sitting quietly there since around 1861. I will tell you more about it in the next issue of Around Radlett.

*Philip Eastburn*  
[philip.eastburn@mail.com](mailto:philip.eastburn@mail.com)

## WANTED - PAINTINGS, PHOTO'S AND ARTICLES

The Communications Committee responsible for compiling Around Radlett are always pleased to receive paintings, photographs and articles on local events. Please send them to [APCCComms@aldenham.org.uk](mailto:APCCComms@aldenham.org.uk)



## WEBSITE

Please remember to visit the Aldenham Parish Council website at [www.aldenham.gov.uk](http://www.aldenham.gov.uk) for update news on the local area and any event that are taking place in your area.

## ADVERTISING

There is currently a waiting list for advertisements in Around Radlett. Should you wish to be added to the list please send your details to [apccomm@aldenham.gov.uk](mailto:apccomm@aldenham.gov.uk).

The cost for 2013 is £45 back page advertisement and £40 for an inside page advertisement.

## STUART THORNE

Bespoke Hand Tailored Suits  
of the Highest Quality



Ladies and Gents Alterations by Expert Tailors

22-24 Aldenham Road, Radlett,  
Hertfordshire WD7 8AX

**01923 857502**

Photos speak louder than words



For a more personalised approach to  
maximising your fertility with  
Acupuncture please call  
Adam Leighton (MBACc) at  
The Gingerbread House in Shenley  
01923 852852 or 07971 191964



## The Oakridge Practice Footcare Clinic

HPC registered Podiatrist / Chiropodist  
01923 839 796

[www.oakridgepractice.com](http://www.oakridgepractice.com)

244, Radlett Road, Colney Street,  
St Albans, AL2 2EN

## NETHERCOTT

INDEPENDENT FAMILY FUNERAL  
DIRECTORS & MONUMENTAL MASONS  
OF DISTINCTION SINCE 1911

20 ALDENHAM ROAD,  
RADLETT WD7 8AX  
TEL: 01923 852899

98 SHENLEY ROAD,  
BOREHAMWOOD WD6  
TEL: 020 8953 9555



Contemporary Indian Takeaway

Free Home Delivery on orders over £12.00

Tel: 01923 855355

10% Discount on Collection  
Opening Hours: 5.00pm - 11.00pm -  
Open 7 Days a week

28 Aldenham Road, Radlett,  
Herts WD7 8AX

[www.aromatakeaway.com](http://www.aromatakeaway.com)



Independent Financial Advisers

44 Watling Street, Radlett,  
Herts WD7 7NN  
[www.tjal.co.uk](http://www.tjal.co.uk)

Tremellen Jeffrey Allan Limited (TJA) is an  
independent firm of financial advisers, established  
in the 1930's and based in Radlett.

The services TJA provide:

- Retirement Planning
- Investments
- Equity Release
- Mortgages

For a free initial consultation, without obligation  
please contact us.

Tel: 01923 333199 Email: [info@tjal.co.uk](mailto:info@tjal.co.uk)

## JB TV SERVICES

REPAIRER OF  
LCD/PLASMA/TV/VIDEO/AUDIO/DVD



**SONY  
JVC  
Panasonic**

- REPAIRS TO ALL MAKES & MODELS
- AUTHORISED REPAIRERS OF  
SONY, JVC, PANASONIC

TV/VIDEO/DIGITAL/TUNING/FREEVIEW  
INSTALLATION & SET UP  
TEL: 07961 420 535

## Marshall Electrical Services

Domestic & Commercial  
Electrical Contractor

All types of Electrical Installation, Service  
and Repair Undertaken

- Fully Qualified Electrician
- Part P Approved
- All Work Guaranteed
- Locally Based

For a FREE Quote contact Chris on:

Tel: 078300 24053

or

email: [chris@cdkm.fsnet.co.uk](mailto:chris@cdkm.fsnet.co.uk)



## Bonhams

1793

## Free Valuations at The Radlett Centre

Monday 17 December  
Monday 21 January  
Monday 18 February  
Monday 18 March

For an appointment,  
please contact:

01491 413 636  
[henley@bonhams.com](mailto:henley@bonhams.com)

Our Jewellery Specialist  
and General Valuer offer  
free auction valuations,  
every third Monday of  
the month, 10am to 3pm.

International Auctioneers and Valuers - [bonhams.com](http://bonhams.com)

## Ken Hodson

Local Computer Hardware & Software Repairs  
Upgrades and Advice for Home and Business

Ken Hodson Computer Services Ltd.

115 Tassell Hall, Redbourn, Herts. AL3 7JE

T: 01582 794723 M: 07974 156743

Email: [enquires@kenhodsoncomputerservices.co.uk](mailto:enquires@kenhodsoncomputerservices.co.uk)

[www.kenhodsoncomputerservices.co.uk](http://www.kenhodsoncomputerservices.co.uk)

- No fix, no fee for all repairs - you have nothing to lose.
- Low hourly rate.
- Most repairs carried out in your home, if not the computer will be picked up and delivered back to you.
- Upgrades of hardware and software.
- Friendly training and instruction available in plain English.
- Problems with Windows / Applications / Games / Internet / networks fixed.
- Advice given on upgrades - many older computers can be upgraded at a fraction of the cost of a new machine.



INDEPENDENT, INDIVIDUAL AND  
TAILORED TO YOUR PET

MODERN FACILITIES IN A  
TRADITIONAL SETTING

AMPLE PARKING FRIENDLY STAFF

@The Red Cow, 107 Radlett Road, Frogmore, Herts AL2 2LA  
[www.halianvet.co.uk](http://www.halianvet.co.uk)



### CARPENTRY

KITCHENS & BATHROOMS  
FITTED WARDROBES  
CUSTOM MADE CABINETS  
DOORS SUPPLIED & FITTED

### FOR DECORATING

INTERIOR & EXTERIOR  
SPECIALIST PAINT EFFECTS  
WALLPAPER HANGING

WORKING IN RADLETT FOR  
OVER 15 YEARS

EXPERIENCED TRADESMAN  
REFERENCES AVAILABLE on REQUEST  
FOR A FREE QUOTATION & DESIGN ADVICE

CALL DAN on

**07808 401678 or 01727 825691**

Email: [dacmaintenance@btinternet.com](mailto:dacmaintenance@btinternet.com)

