

Phillimore Recreation Ground Café

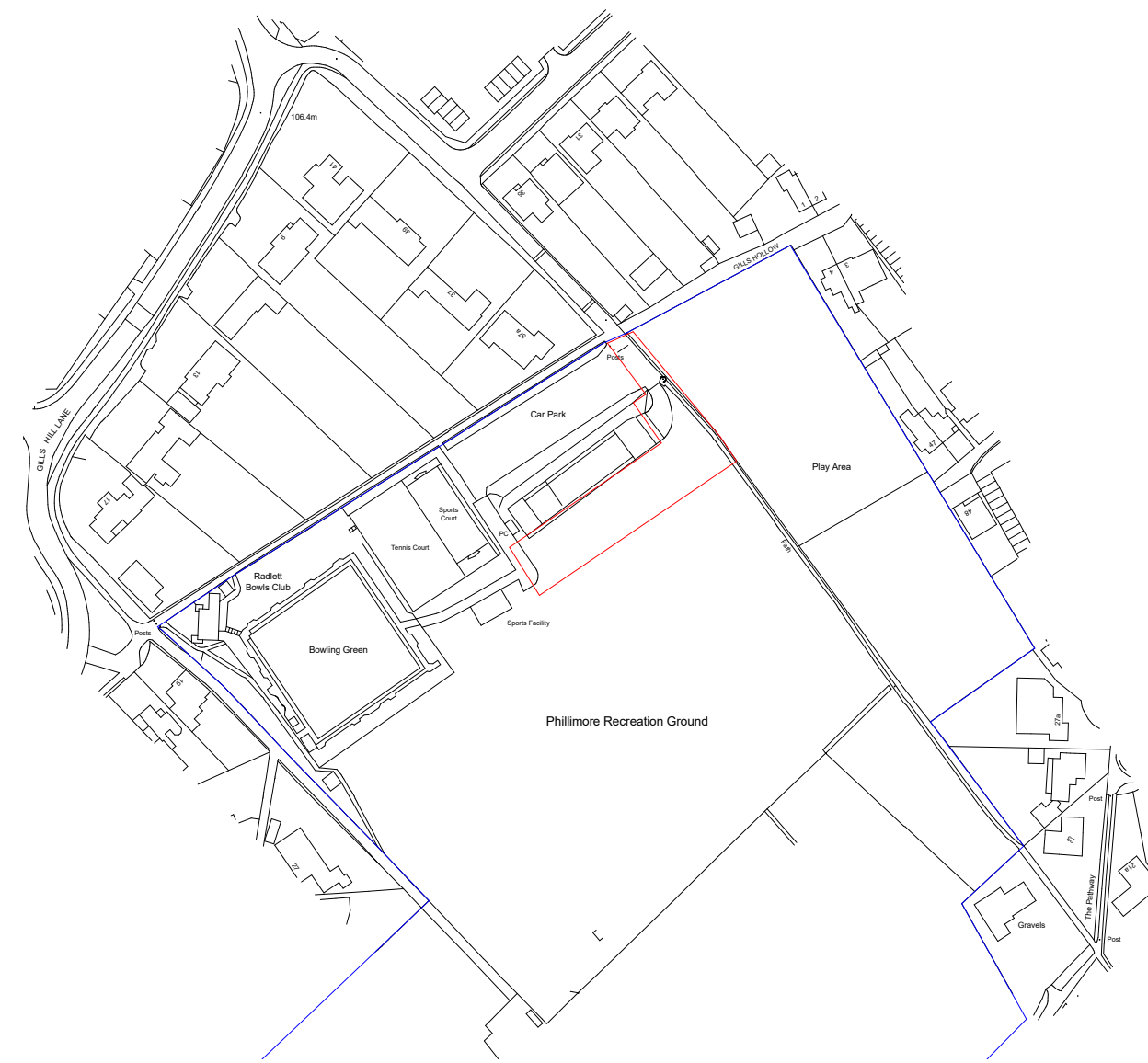
Planning Application

Following the consultation event held November 2021, Aldenham Parish Council have been working with the project managers IID Architects on responding to the feedback received. The revised plans have now been submitted to Hertsmeire Borough Council Planning Department for planning permission to build the café.

The revised plans include:

- Patio area to the sides of the building has been reduced to soften the impact of hard surfaces
- Include more hedging on boundary
- Removal of pathway in front of building and relocation of the pathway linking the building with the Multi Use Games Area to be within the community woodland
- Relocation of refuse area to the rear of the building meaning that the total area taken up by the site is reduced

Please view the plans at www.hertsmere.gov.uk/planning and search for application number 22/1702/FUL, and make comments. Any questions or copies of comments can be made by e-mail to Peter Evans Council Manager Aldenham Parish Council on manager@aldenham-pc.gov.uk



Site location plan



Site plan



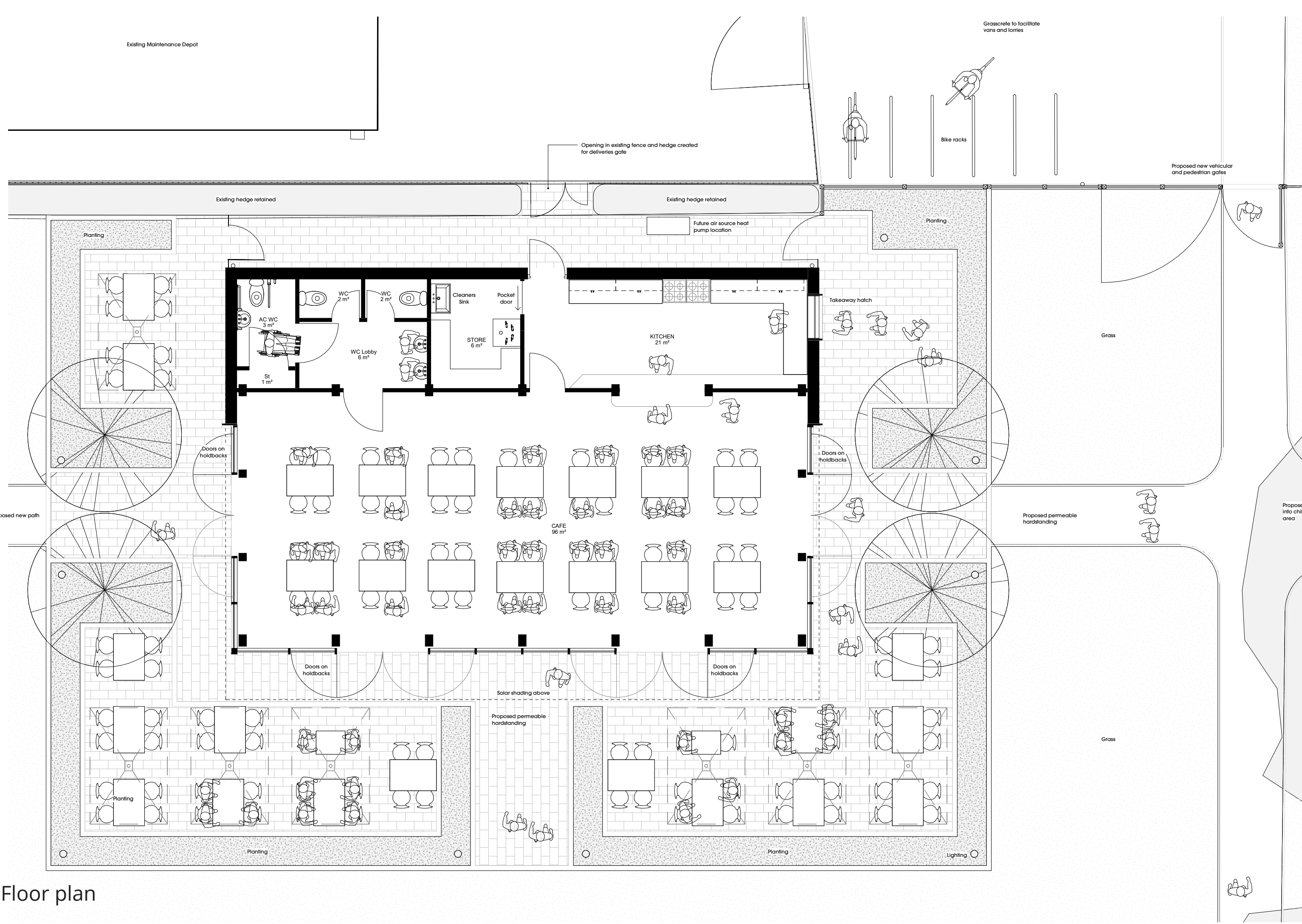
View from new entrance



View from east



Internal view



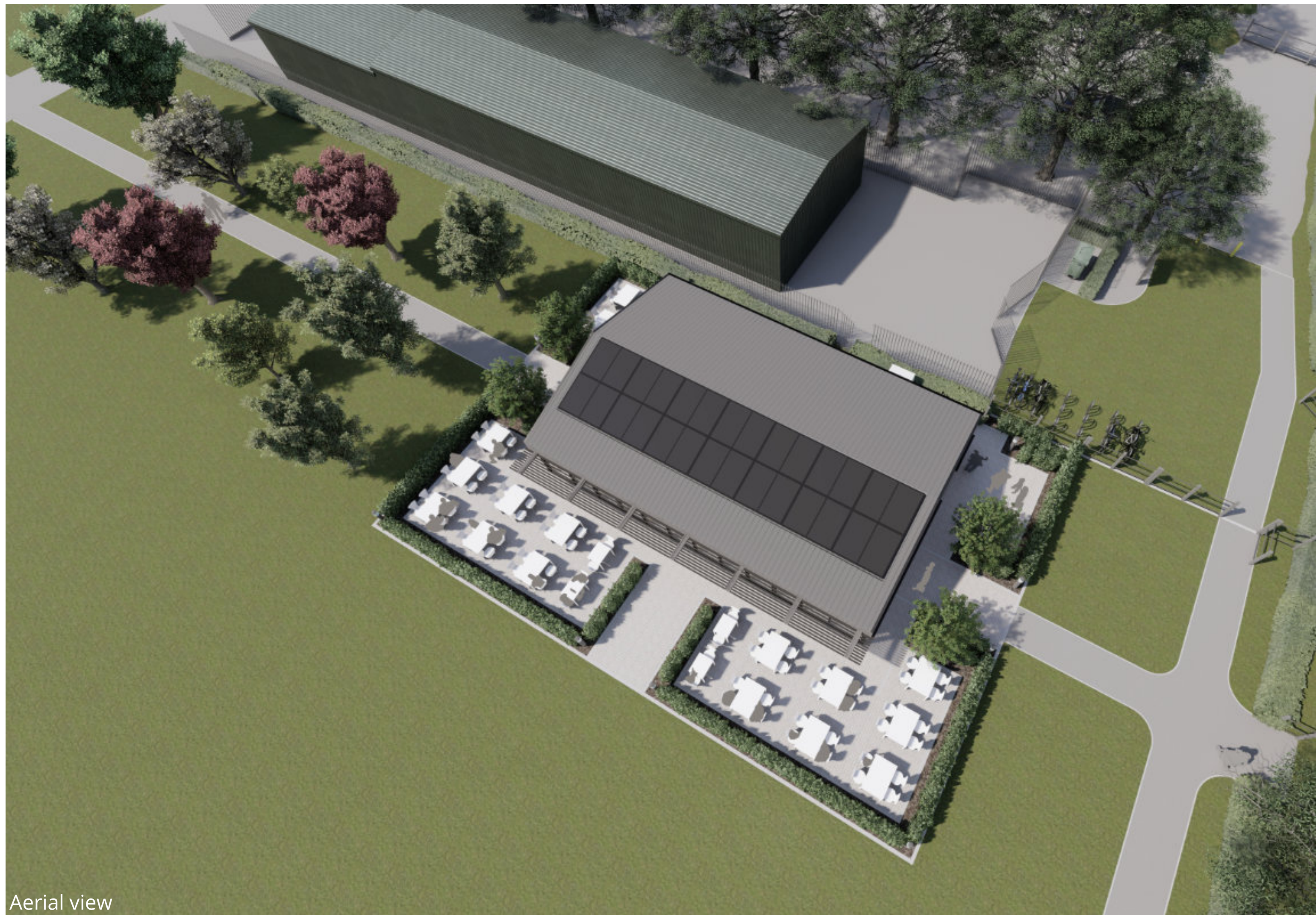
Floor plan



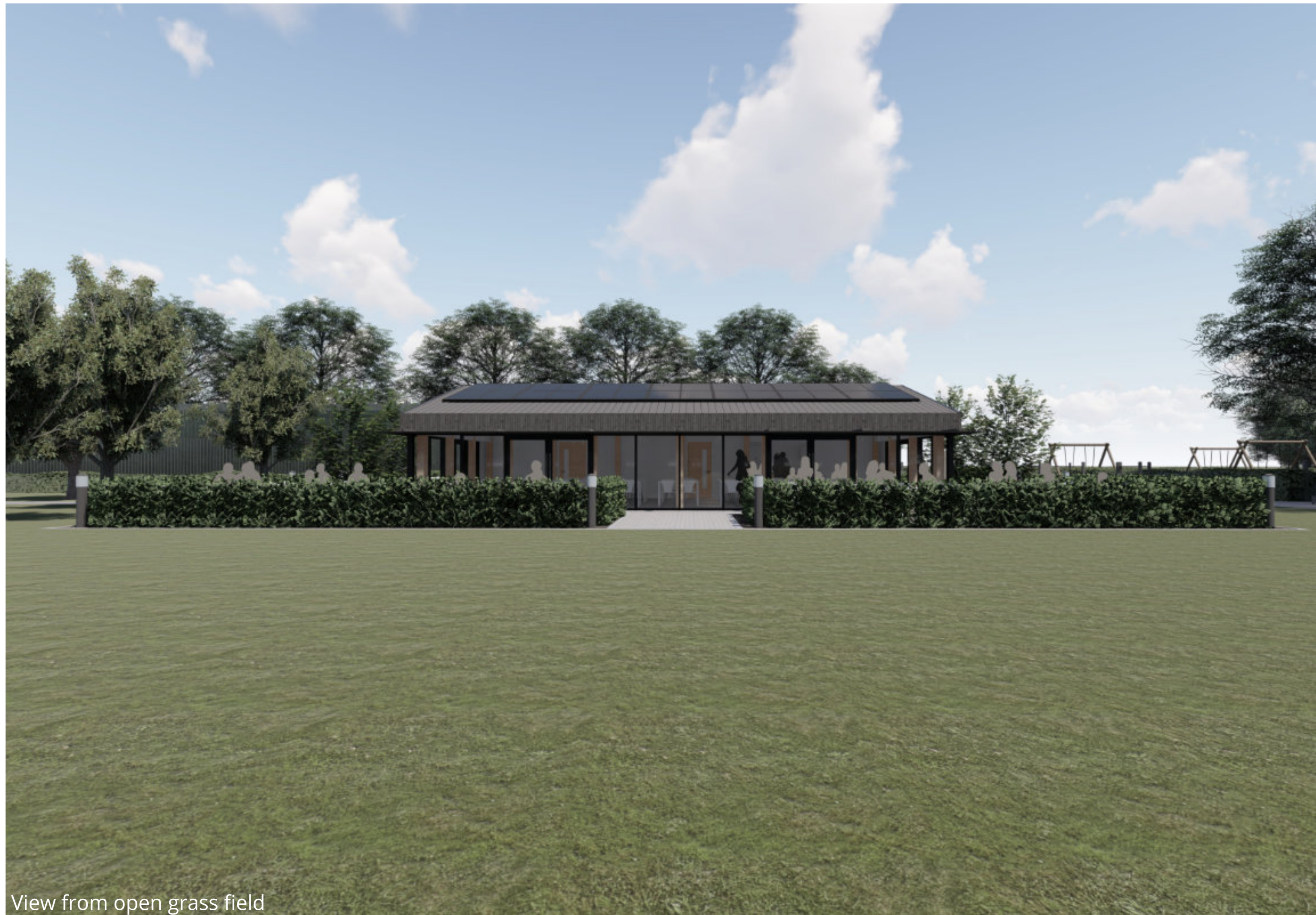
View from south



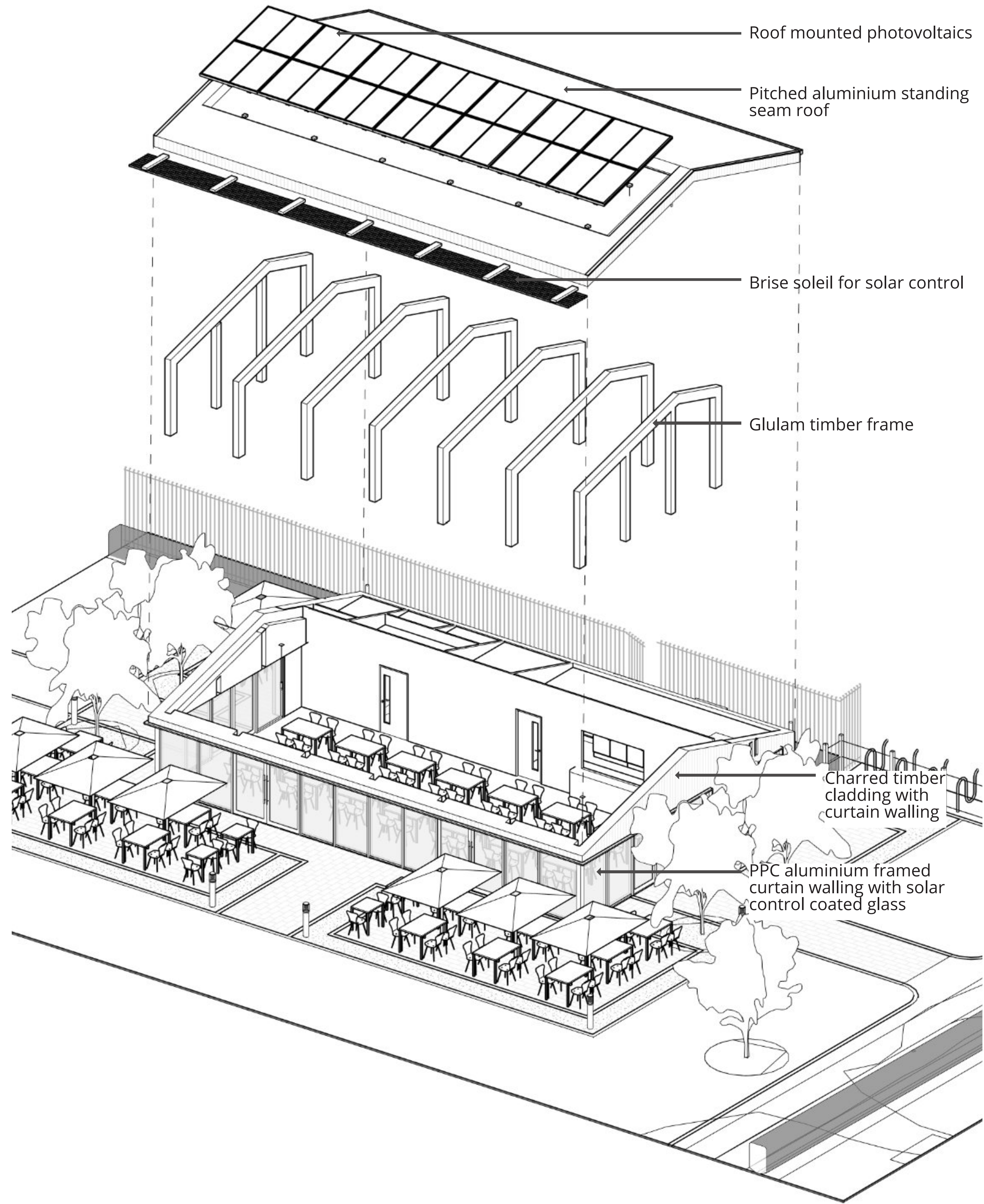
View from new entrance gates



Aerial view



View from open grass field



Construction exploded view