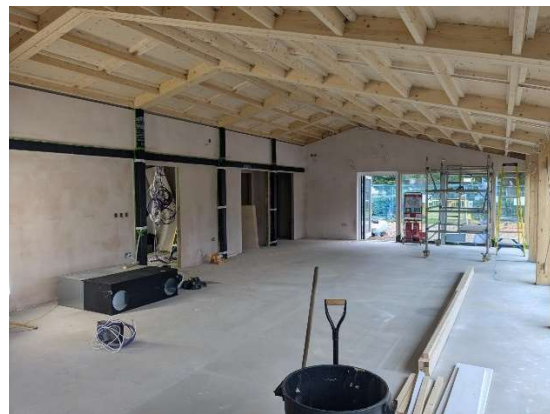


Phillimore Recreation Ground Café - August 2024 Newsletter

We are pleased to report that construction has continued to make good progress over the last month. The building has been made weathertight, mechanical and electrical services have made good progress in the new kitchen and toilets, which in turn has allowed us to plaster the vast majority of the building. The completion of roof finishes including the installation of solar panels has allowed us to make good progress with the external timber cladding. With the scaffolding removed, we can focus on external paved areas.



Over the course of the next month, internally we will progress the finishing elements including the fitting out of the toilets, installation of kitchen ceilings, decoration and flooring throughout.

Construction sites are dangerous places and the fencing panels that have been erected are there to secure our site area and to provide protection to yourselves, so please do not enter the building site at any time.

We have many delivery vehicles coming and going, so please be cautious near the site entrance. Safety signage is in place and will be maintained throughout the project.

Should anyone have any queries during the works, then please do not hesitate to speak to our site manager Trevor Lam – 07796 649522 or our Construction Director Dannie Bonner 07748 707342

Your safety is of paramount importance to us and your co-operation in this matter is requested – Thank You

